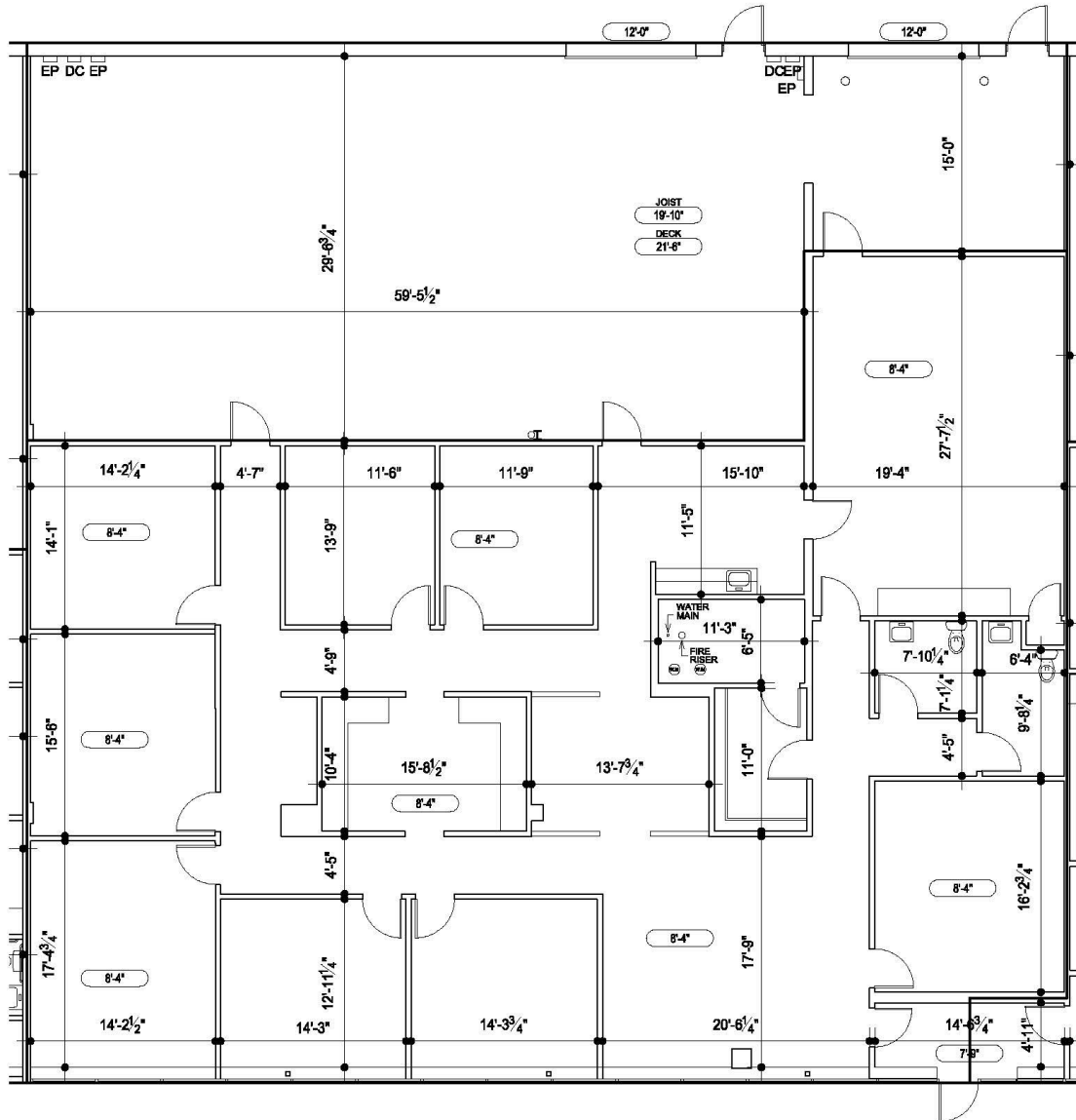


Leased & Managed By:

ARI-EL

TECHTRON CENTRE

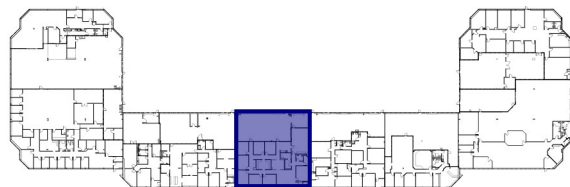
23399 Commerce Drive, Suite B-5, Farmington Hills, MI 48335



UNIT HIGHLIGHTS

Total Area: Approx. 6,341 SF
Office Area: Approx. 4,192 SF
Overhead Door: Two 12' Grade Level

LOCATION OVERVIEW



www.ari-el.com



29355 Northwestern Hwy., Suite 301, Southfield, MI 48034



(248) 557-3800