

For Lease



JEFFREY R. BECKER CCIM . CPM . RPA

805.653.6794

[jbecker@beckergroup.com](mailto:jbecker@beckergroup.com)

CA DRE #01213236

40 SOUTH ASH STREET | VENTURA, CA 93001 | 805.653.6794 | [BECKERGRP.COM](http://BECKERGRP.COM)



### PROPERTY DESCRIPTION

Fantastic office and retail studios located within the historic El Jardin Courtyard in beautiful Downtown Ventura. The courtyard offers a beautiful private atmosphere with ample charm, located right in the center of Ventura's premier cultural, arts, entertainment and tourist destination.

NNN includes trash and water.

Located in the heart of Downtown Ventura, with numerous restaurants, shopping, Ventura Theatre, City Hall, Century Theater, beaches, Ventura Pier, State Fairgrounds, and free parking lots all within walking distance.

### LOCATION DESCRIPTION

Located in Historic El Jardin Patio Building City Landmark #63. 1925 Spanish Colonial Revival Architecture with its Original Open Air Courtyard Design.

SPACES	RATE PER SQ FT	NNN	SPACE SIZE
451-9	\$2.75 SF/month	est. \$0.96 psf	827 SF

### AGENT CONTACT INFO

Jeffrey R. Becker  
805.653.6794 ext. 201 | [jbecker@beckergroup.com](mailto:jbecker@beckergroup.com)

Hutton Becker  
805.653.6794 ext. 212 | [hbecker@beckergroup.com](mailto:hbecker@beckergroup.com)

**JEFFREY R. BECKER CCIM . CPM . RPA**

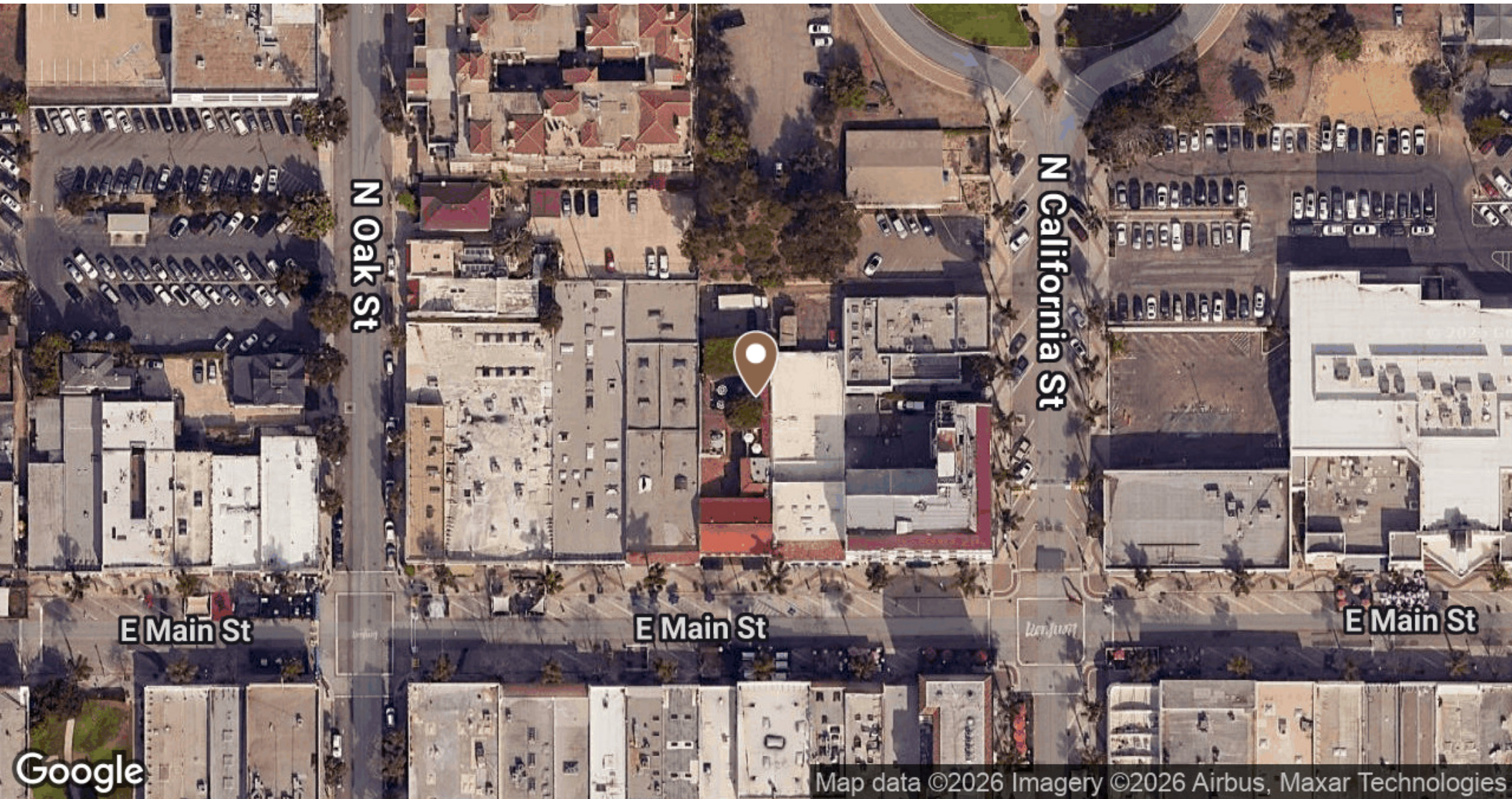
**805.653.6794**

**[jbecker@beckergroup.com](mailto:jbecker@beckergroup.com)**

**CA DRE #01213236**







**JEFFREY R. BECKER CCIM . CPM . RPA**

805.653.6794

[jbecker@beckergroup.com](mailto:jbecker@beckergroup.com)

CA DRE #01213236





JEFFREY R. BECKER CCIM . CPM . RPA

805.653.6794

[jbecker@beckergroup.com](mailto:jbecker@beckergroup.com)

CA DRE #01213236