



1911 Rice Street, Roseville MN, 55113

## Industrial + Office Space for Lease



### STATS

**Building Size:** 16,950 SF

**Floors:** 2

**Year Built:** 1956

**Renovated:** 2022

### AVAILABILITY

**Suite A:** 2nd Floor | 2,656 RSF

**Lease Rate:** \$14.00-\$16.00/SF Gross

### HIGHLIGHTS

- Recently updated with new windows, solar panels, and geothermal heating & cooling
- Great access to I-35E and Hwy-36
- Onsite parking available
- Free Wi-fi
- Close proximity to shopping and restaurants
- Located at intersection with four way traffic signals
- Located in Rice and Larpenteur Alliance Neighborhood
- Located in an Opportunity Zone
- Close proximity to Lake McCarrons County Park
- METRO Transit bus stops across the street
- Dock and Drive-in doors (Suite A)



**Jeff Hart, CCIM**  
 2550 University Ave. W. #305-S  
 St. Paul, MN 55114  
 612-747-7794  
 JeffHart@Suntide.com

**Kevin Peck**  
 2550 University Ave. W. #305-S  
 St. Paul, MN 55114  
 612-834-2250  
 KevinPeck@Suntide.com

1911 Rice Street, Roseville MN, 55113

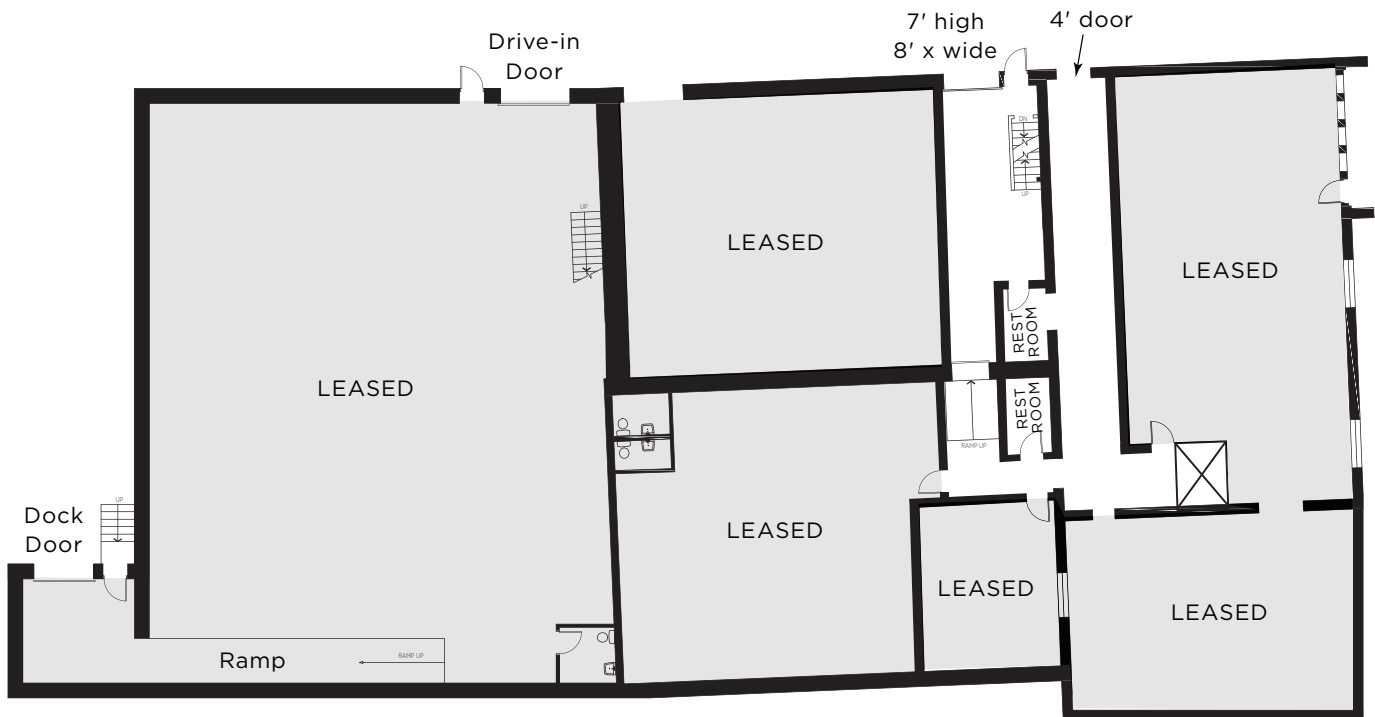
INTERIOR PHOTOS



**Jeff Hart, CCIM**  
2550 University Ave. W. #305-S  
St. Paul, MN 55114  
612-747-7794  
JeffHart@Suntide.com

**Kevin Peck**  
2550 University Ave. W. #305-S  
St. Paul, MN 55114  
612-834-2250  
KevinPeck@Suntide.com

1911 Rice Street, Roseville MN, 55113



**Jeff Hart, CCIM**  
2550 University Ave. W. #305-S  
St. Paul, MN 55114  
612-747-7794  
JeffHart@Suntide.com

**Kevin Peck**  
2550 University Ave. W. #305-S  
St. Paul, MN 55114  
612-834-2250  
KevinPeck@Suntide.com