

# 401 Mississippi St.

Vallejo, CA

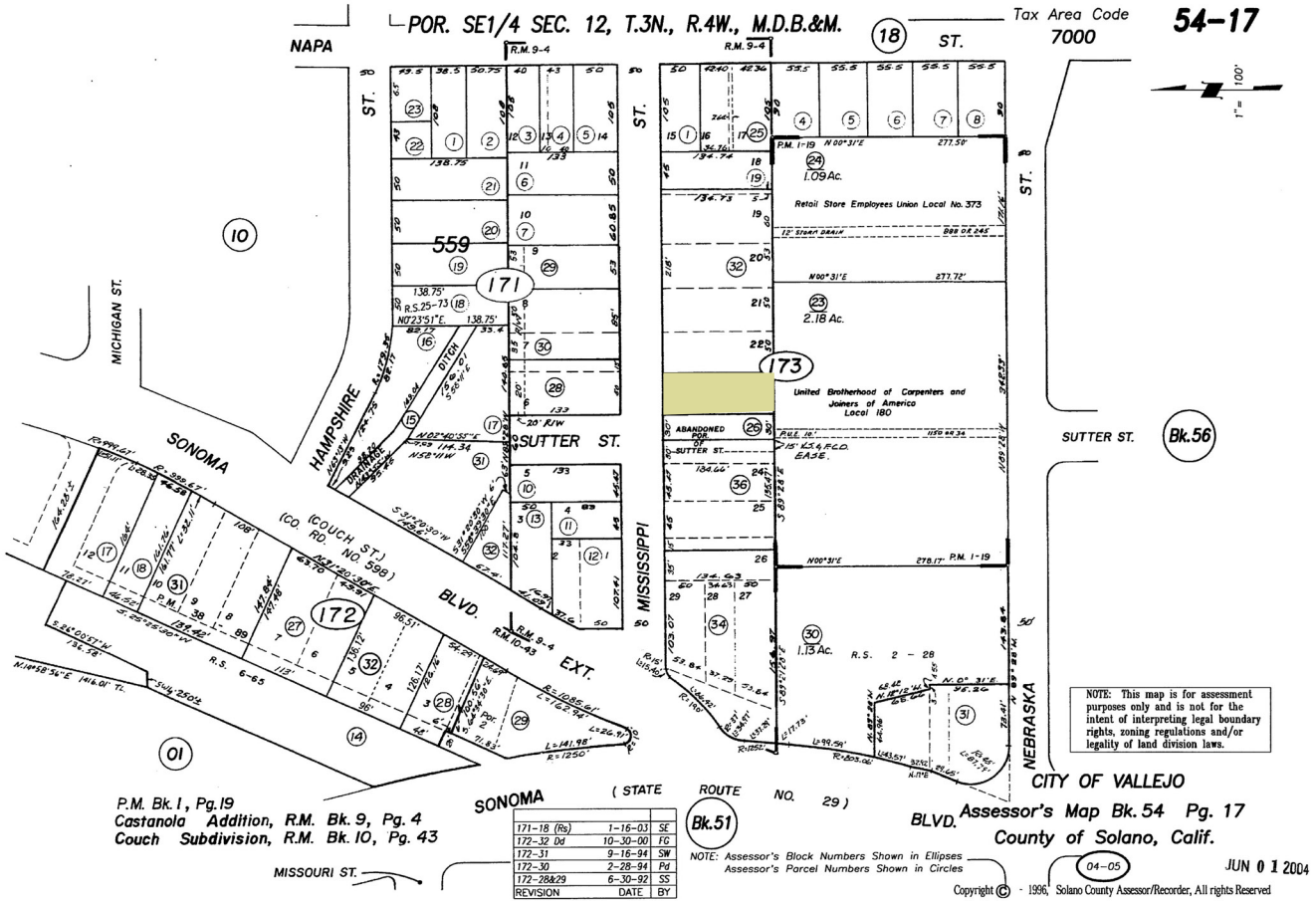
401 Mississippi St.  
Vallejo, CA  
[www.cbre.com/walnutcreek](http://www.cbre.com/walnutcreek)

For Sale: Standalone ±6,852 SF Metal Building on ±0.15 Acres



**For Sale**

401 Mississippi St. | Vallejo, CA



P.M. Bk. I, Pg. 19  
 Castanola Addition, R.M. Bk. 9, Pg. 4  
 Couch Subdivision, R.M. Bk. 10, Pg. 43

SONOMA	( STATE	ROUTE	NO. 29 )
171-18 (Rb)	1-16-03	SE	
172-32 (Dd)	10-30-00	FE	
172-31	9-16-94	SW	
172-30	2-28-94	PV	
172-28&29	6-30-92	SS	
REVISION	DATE	BY	

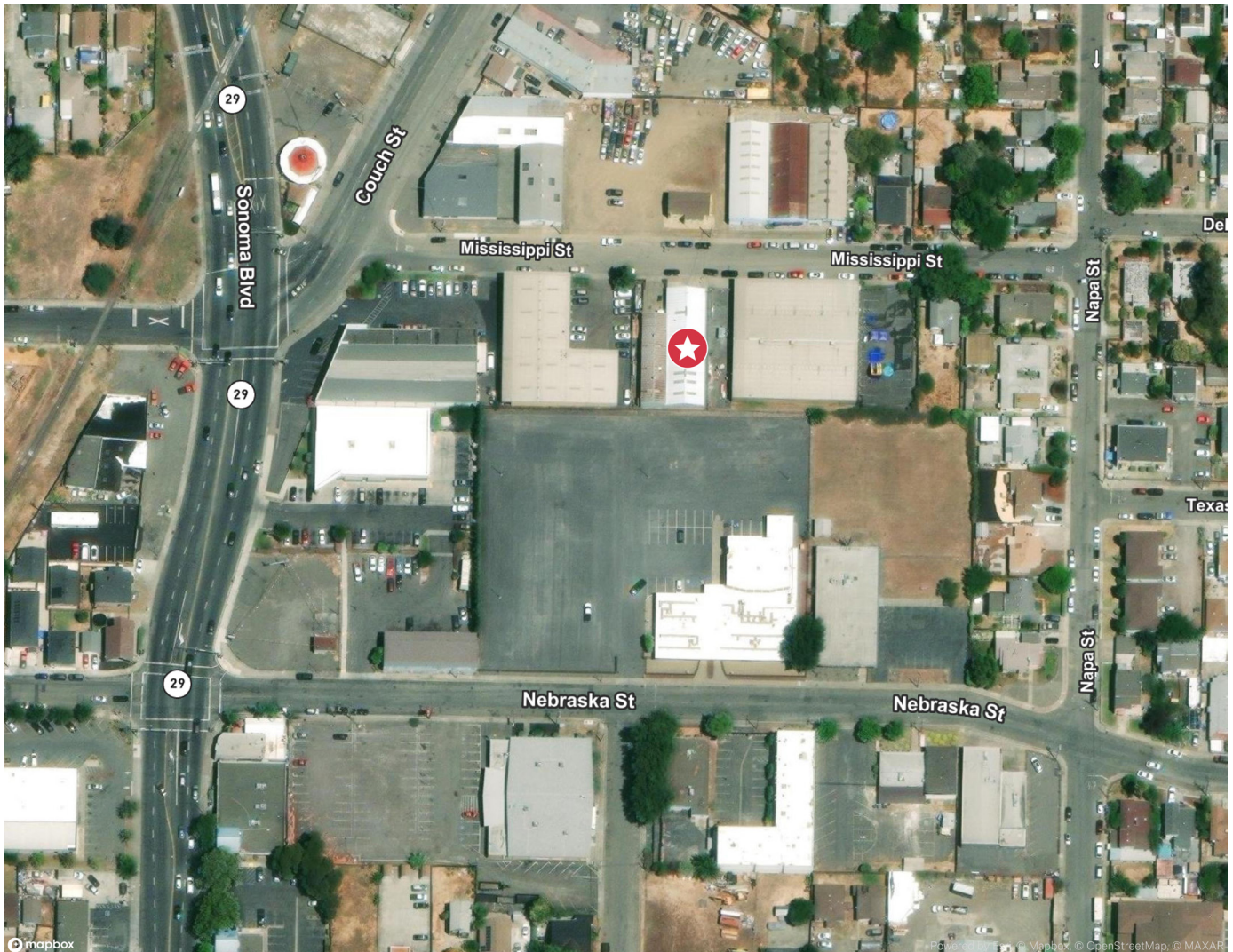
NOTE: Assessor's Block Numbers Shown in Ellipses  
 Assessor's Parcel Numbers Shown in Circles

Copyright © 1996 Solano County Assessor/Recorder, All rights Reserved

# Property Highlights

- + For Sale: ±6,852 SF Metal Building on ±0.15 Acres
- + APN#: 0054-173-160
- + Year Built: 1951
- + Warehouse: ±4,877 SF
- + Office: ±1,375 SF (two locations)
  - ±775 SF
  - ±600 SF
- + Mezzanine: ±700 SF w/ 4,800 lb. capacity
- + Three (3) Grade Level Doors; one (1) 19'x11'; two (2) 10'x10'
- + Power: 200 amps @ 120/208 volts, 3-phase (to be verified)
- + Two (2) Restrooms
- + ±552 SF Overhang (23'x24')

# Aerial Map



## Contact Us

### Bo Harkins

First Vice President  
+1 925 296 7727  
bo.harkins@cbre.com  
Lic. 01943785

### Kevin Kennick

KBC Advisors  
+1 925 330 1801  
kevin.kennick@kbcadvisors.com  
Lic. 02110600

© 2024 CBRE, Inc. All rights reserved. This information has been obtained from sources believed reliable, but has not been verified for accuracy or completeness. You should conduct a careful, independent investigation of the property and verify all information. Any reliance on this information is solely at your own risk. CBRE and the CBRE logo are service marks of CBRE, Inc. All other marks displayed on this document are the property of their respective owners, and the use of such logos does not imply any affiliation with or endorsement of CBRE. Photos herein are the property of their respective owners. Use of these images without the express written consent of the owner is prohibited.