

# SW OKC INDUSTRIAL LAND

5501 Southwest 13th Street, Oklahoma City, OK 73128

LAND FOR SALE



## OFFERING SUMMARY

Sale Price:	\$1,695,000
Lot Size:	9.88 Acres
\$/SF:	\$3.94
\$/AC:	\$171,558
Zoning:	PUD-23A (Industrial)

## PROPERTY DESCRIPTION

This is an exceptional investment opportunity with the property located in the thriving Oklahoma City area less than a mile from I-40 and just minutes away from Will Rogers Airport. Zoned PUD-23A for Industrial use, this shovel-ready 9.88 acre site offers a strategic advantage for industrial investors and/or users. The property is surrounded by a robust industrial landscape, providing ideal accessibility.

## PROPERTY HIGHLIGHTS

- 9.88 acres of shovel-ready land
- 557' (frontage) x 729' (depth)
- Zoned PUD-23A for industrial use
- Close proximity to I-40 and Will Rogers Airport
- Will divide (3-5 acre tracts)

### ANDREW HWANG, ESQ

Co-Founder & Partner  
734.223.6284  
andrew@adeptcre.com

### ZACH MARTIN

Co-Founder & Partner  
405.823.1644  
zach@adeptcre.com

**ADEPT**  
COMMERCIAL REAL ESTATE

# SW OKC INDUSTRIAL LAND

5501 Southwest 13th Street, Oklahoma City, OK 73128

LAND FOR SALE



**ANDREW HWANG, ESQ**

Co-Founder & Partner  
734.223.6284  
andrew@adeptcre.com

**ZACH MARTIN**

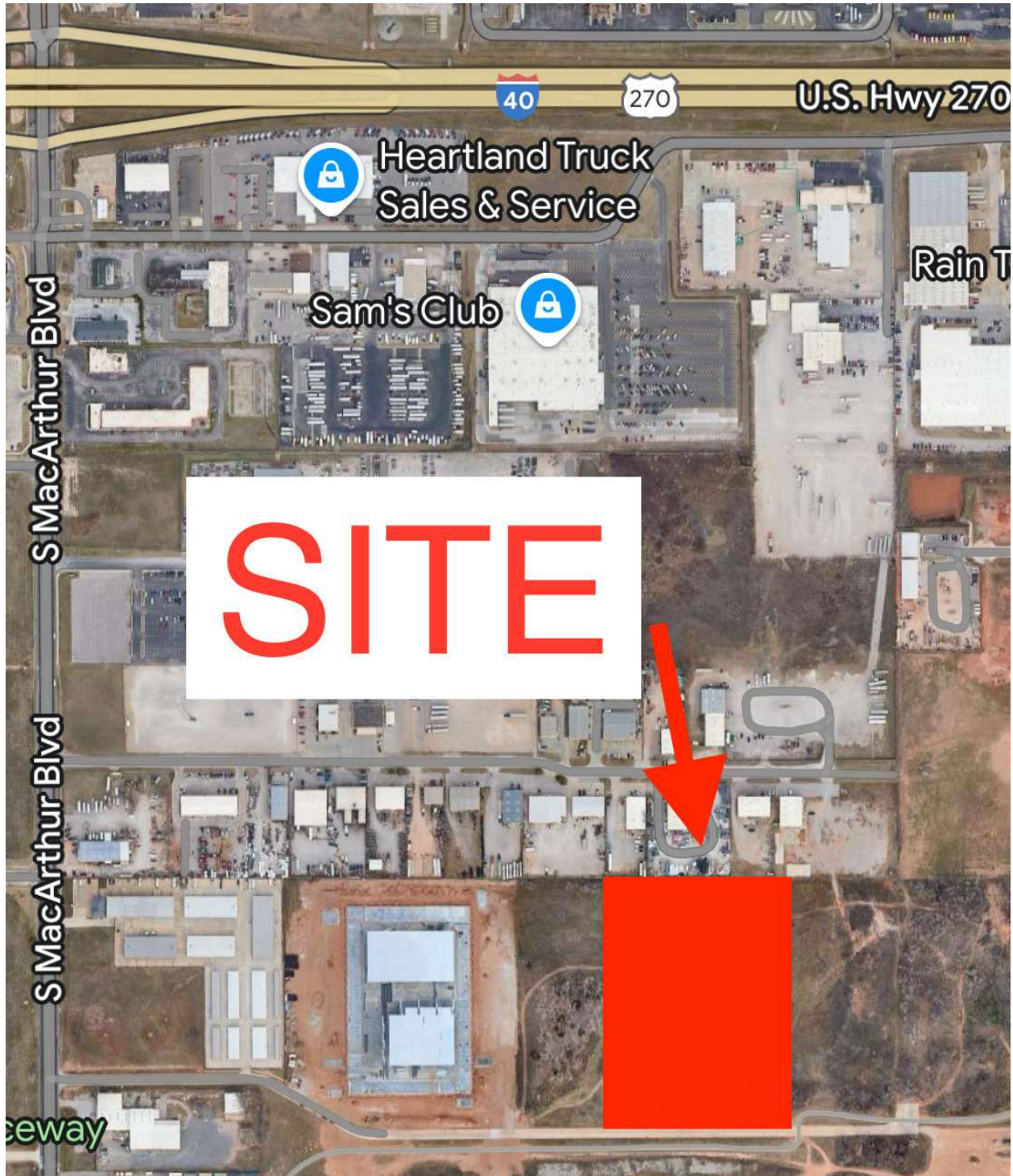
Co-Founder & Partner  
405.823.1644  
zach@adeptcre.com

**ADEPT**  
COMMERCIAL REAL ESTATE

# SW OKC INDUSTRIAL LAND

5501 Southwest 13th Street, Oklahoma City, OK 73128

LAND FOR SALE



**ANDREW HWANG, ESQ**

Co-Founder & Partner  
734.223.6284  
andrew@adeptcre.com

**ZACH MARTIN**

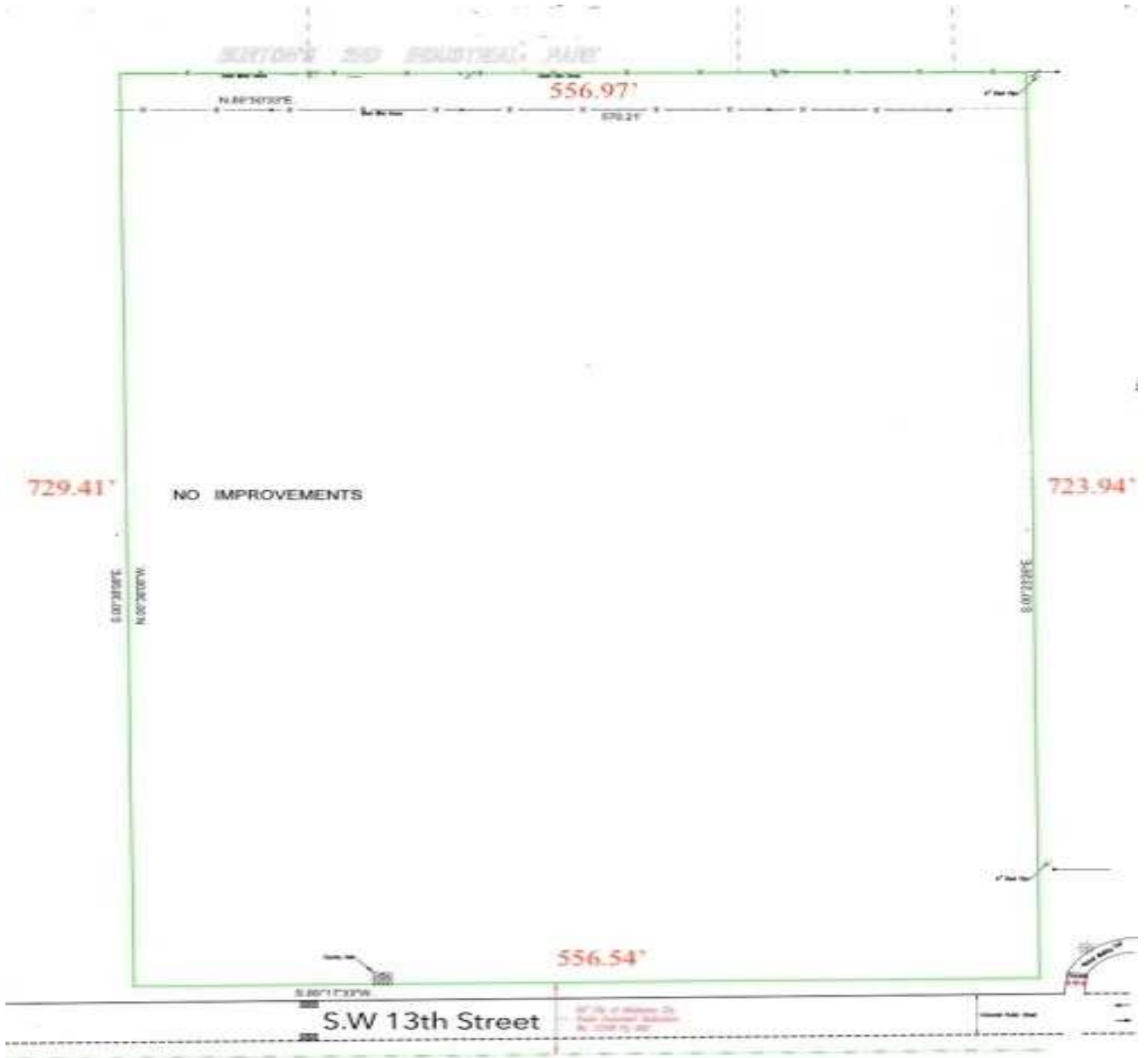
Co-Founder & Partner  
405.823.1644  
zach@adeptcre.com

**ADEPT**  
COMMERCIAL REAL ESTATE

# SW OKC INDUSTRIAL LAND

5501 Southwest 13th Street, Oklahoma City, OK 73128

LAND FOR SALE



## ANDREW HWANG, ESQ

Co-Founder & Partner  
734.223.6284  
andrew@adeptcre.com

## ZACH MARTIN

Co-Founder & Partner  
405.823.1644  
zach@adeptcre.com

**ADEPT**  
COMMERCIAL REAL ESTATE