



FOR LEASE

# Bath Shopping Center

5 Chandler Drive | Bath, ME



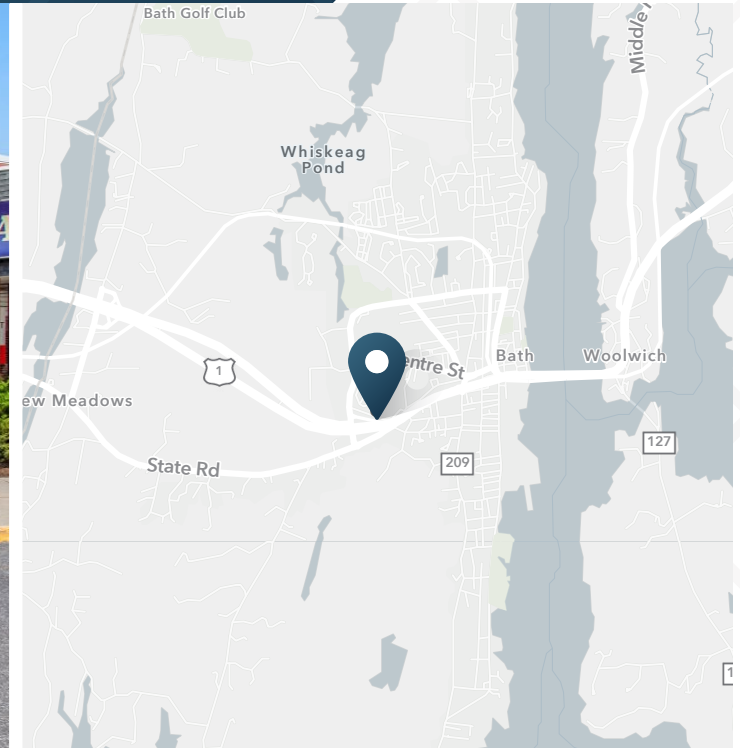


# Bath Shopping Center

5 Chandler Drive | Bath, ME



**FOR LEASE**



2,000 - 11,875 SF

Available

Contact Broker

Rate

Owned & Managed By:



## ABOUT THE PROPERTY

- Shaw's anchored shopping center located on US Rte 1 with 34,000 VPD. One of the top three performing Shaw's in the state of Maine.
- This 101,124± SF shopping center is easily accessible and is a popular destination for both the local population and tourists.
- Major Tenants Include Shaws, Rent-A-Center, and Restore Habitat for Humanity.
- 398 parking spaces
- Pylon signage available.

## NEARBY RETAILERS



## TRAFFIC COUNTS

Route 1	34,000 VPD
Leeman Highway	12,914 VPD
Congress Ave	8,141 VPD
Year: 2020   Source: Esri	

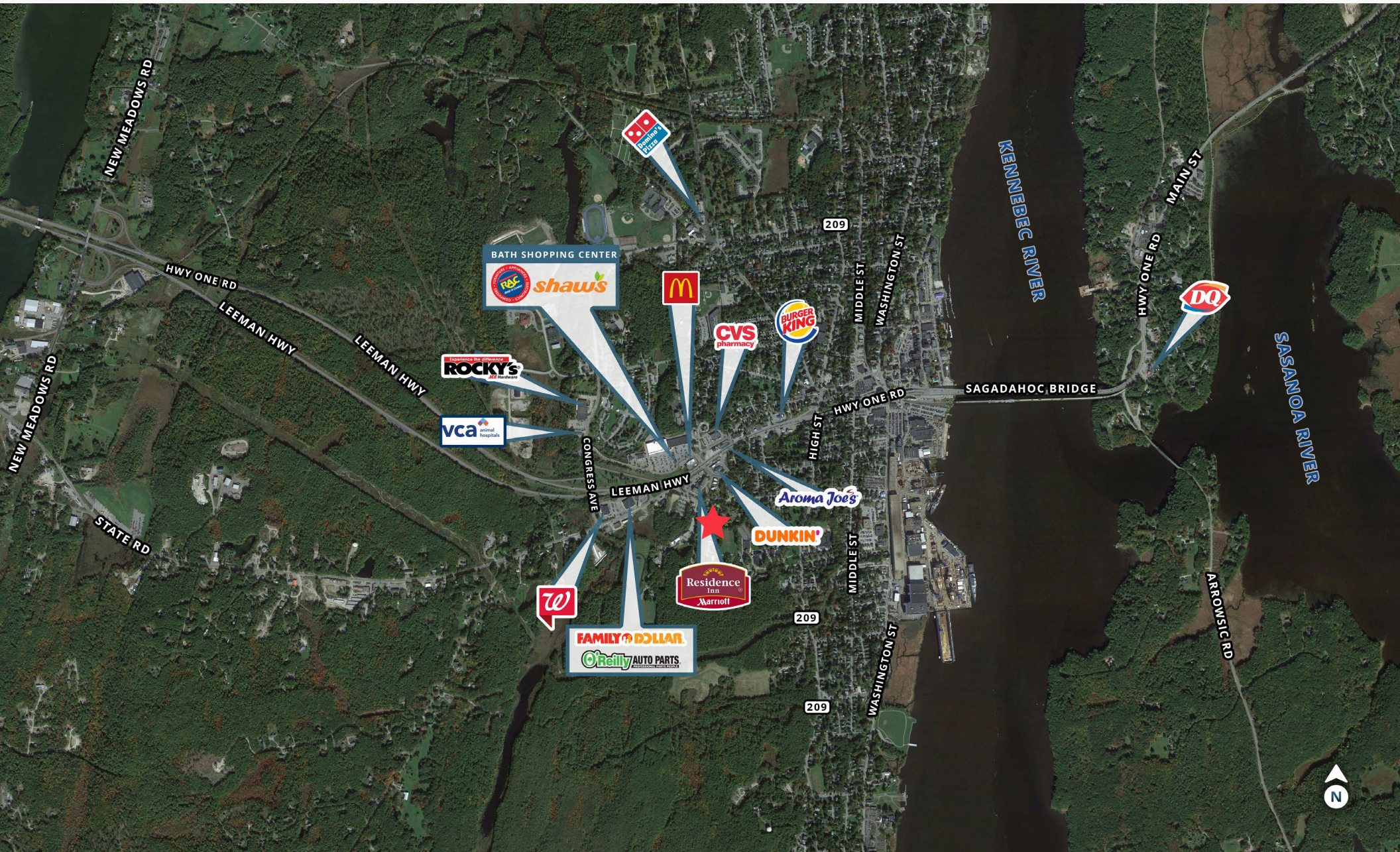
**5 Chandler Drive | Bath, ME**

[illegible]



# Bath Shopping Center

5 Chandler Drive | Bath, ME





# Bath Shopping Center

5 Chandler Drive | Bath, ME



## DEMOGRAPHIC HIGHLIGHTS

### Population

	3 miles
2025 Estimated Population	11,523
2030 Projected Population	11,774
Proj. Annual Growth 2025 to 2030	0.43%

### Daytime Population

2025 Daytime Population	15,544
Workers	9,730
Residents	5,814

### Income

2025 Est. Average Household Income	\$92,908
2025 Est. Median Household Income	\$73,864

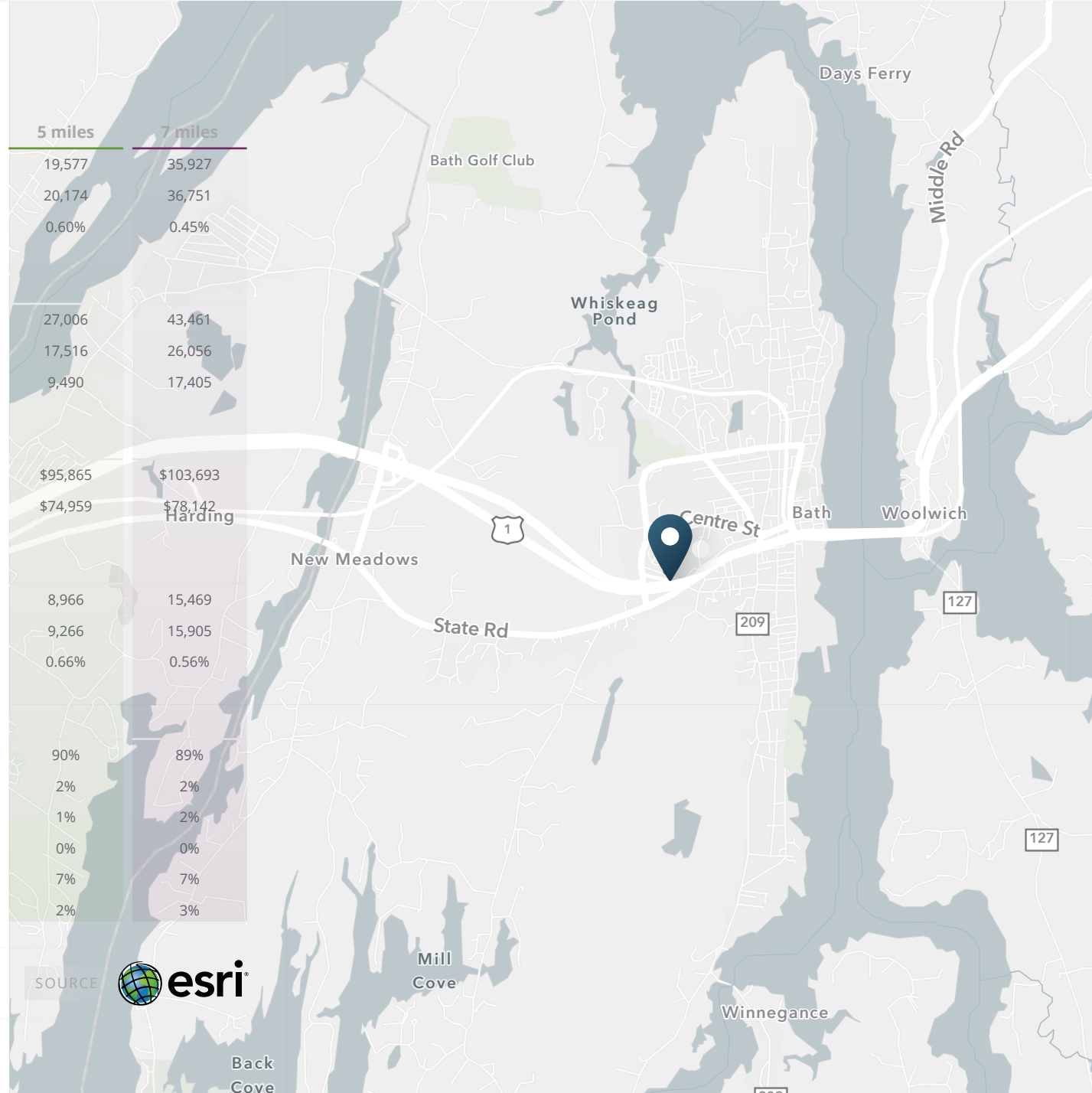
### Households & Growth

2025 Estimated Households	5,419
2030 Estimated Households	5,534
Proj. Annual Growth 2025 to 2030	0.42%

### Race & Ethnicity

2025 Est. White	90%
2025 Est. Black or African American	2%
2025 Est. Asian or Pacific Islander	1%
2025 Est. American Indian or Native Alaskan	0%
2025 Est. Other Races	7%
2025 Est. Hispanic (Any Race)	2%

> **Want more?** Contact us for a complete demographic, foot-traffic, and mobile data insights report.





**SRS Real Estate Partners**

400 Fifth Avenue, Suite 105  
Waltham, MA 02451  
857.263.3839

**BRYAN WRIGHT**

617.245.0671  
Bryan.Wright@srsre.com

**CHRIS JANELLE**

617.872.1115  
Chris.Janelle@srsre.com

**SAMANTHA MAZZA**

614.702.5303  
Samantha.Mazza@srsre.com

**JONATHAN LAPAT**

**BROKER OF RECORD**

**SRSRE.COM**

© SRS Real Estate Partners

The information presented was obtained from sources deemed reliable;  
however SRS Real Estate Partners does not guarantee its completeness or accuracy.