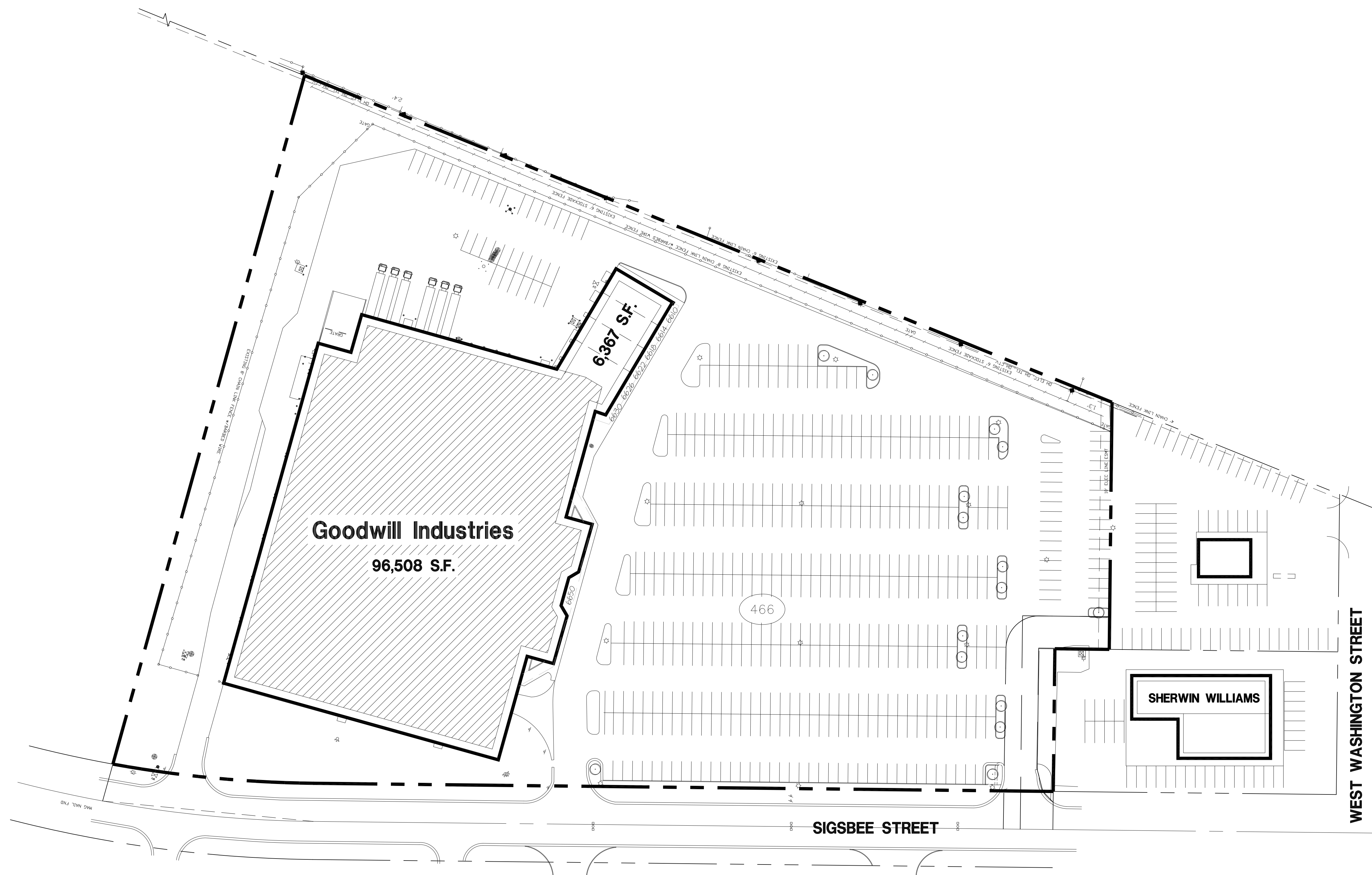
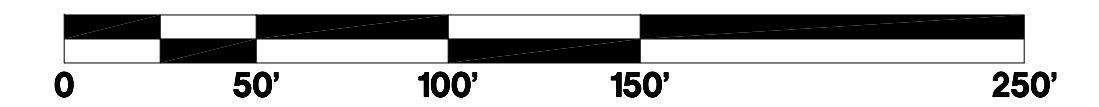


The Broadbent Company

117 E Washington Street, Suite 300
Indianapolis, Indiana 46204

(317) 237-2900



Site Data

Total Building Area

TOTAL BLDG AREA 102,875 S.F.

Parking Spaces

PARKING RATIO IS ASSUMED: 1 SPACE/250 SF OF BLDG

TOTAL PARKING REQ'D 412 SPACES
TOTAL PARKING PROVIDED 501 SPACES

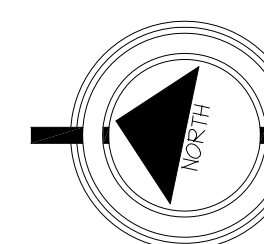
NOTE:

THIS SITE PLAN IS SCHEMATIC AND IS PROVIDED TO SHOW APPROXIMATE ACREAGE AND LOCATIONS OR SIZES OF A BUILDING (OR BUILDINGS) THAT WILL FIT ON THIS SITE. CHANGES MAY BE REQUIRED ONCE A FINAL SURVEY WITH CURRENT BOUNDARIES, EASEMENTS, RIGHT-OF-WAYS AND DIMENSIONS OR AFTER FINAL ZONING REVIEW IS COMPLETED.

THE INFORMATION CONTAINED HEREIN IS BELIEVED TO BE CORRECT AND IS OBTAINED FROM SOURCES WE REGARD AS RELIABLE. WE ASSUME NO LIABILITY FOR ERRORS OR OMISSIONS HEREIN. ALL DIMENSIONS ARE APPROXIMATE.

WEST WASHINGTON

West Washington Street
Indianapolis, Indiana



Schematic Site Plan

SCALE: 1" = 50'

FILE - DATE - TIME	LEECH-HENSLEY ARCHITECTS ^{INC}
872-17.dwg 4-7-06 1:36:09 pm EST	
PLOT SCALE	DRAWN BY:
1" = 50'	GAS

7785 East 126th St. Fishers, IN 46038
tel 317 842 1931 fax 317 842 7994

Proj. No. 8712

April 29, 2019

Scheme #17