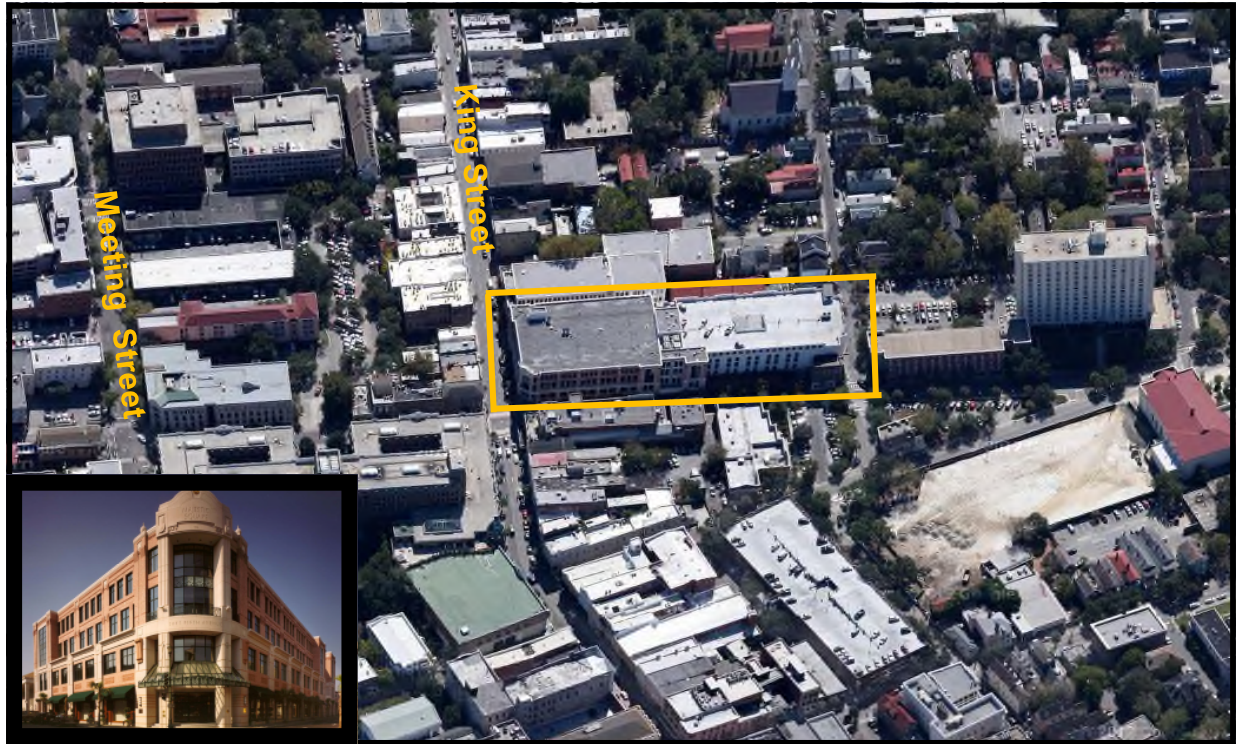


# For Lease Class A Executive Office

## Majestic Square

211 King Street, Charleston, South Carolina 29401



### Summary:

- Prime location downtown at the corner of King and Market Streets above Forever 21
- One Executive Office Suite available approximately 284 sf
- Lease rate is \$1,250 per month full service and includes 24 hour access to third floor fitness center
- Includes private office with large windows and views looking down on Market Street
- A parking garage is connected to the building. Landlord has parking spaces available for an additional monthly cost.
- Within walking distance to area restaurants and retail

#### EDWARD G. ROBINSON IV

211 King Street, Suite 300 • Charleston, South Carolina 29401  
843.864.3760 Mobile • 843.722.2615 Office • 843.722.6449 Fax  
erobinson@thebeachcompany.com

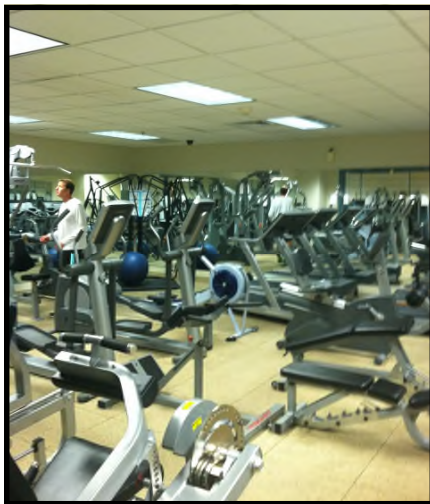
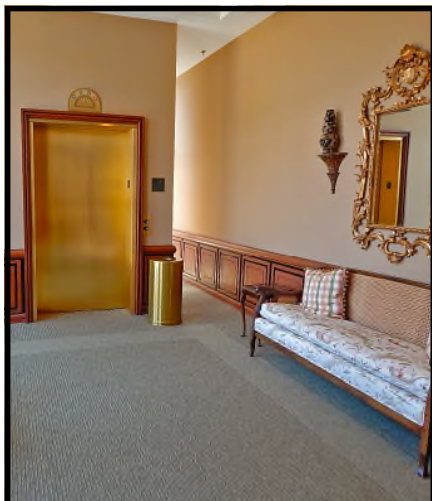
## BEACH

COMMERCIAL

A DIVISION OF THE BEACH COMPANY

# For Lease

## Class A Executive Office



### Specifications:

- Charleston County
- City of Charleston
- Tax Map #457-08-02-026
- Majestic Square was built in 1994
- Building is 42,500 sf
- Multiple suites available for immediate occupancy
- Three elevators access the Building
- High profile King Street address in a landmark building

#### EDWARD G. ROBINSON IV

211 King Street, Suite 300 • Charleston, South Carolina 29401  
843.864.3760 Mobile • 843.722.2615 Office • 843.722.6449 Fax  
erobinson@thebeachcompany.com

**BEACH**  
COMMERCIAL

A DIVISION OF THE BEACH COMPANY