



OYSTER POINT

±667 - ±71,783 RSF OFFICE FOR LEASE
BAY VIEWS - ROOM TO EXPAND - PLENTIFUL AMENITIES



CUSHMAN & WAKEFIELD

ABOUT

OYSTER POINT MARINA PLAZA

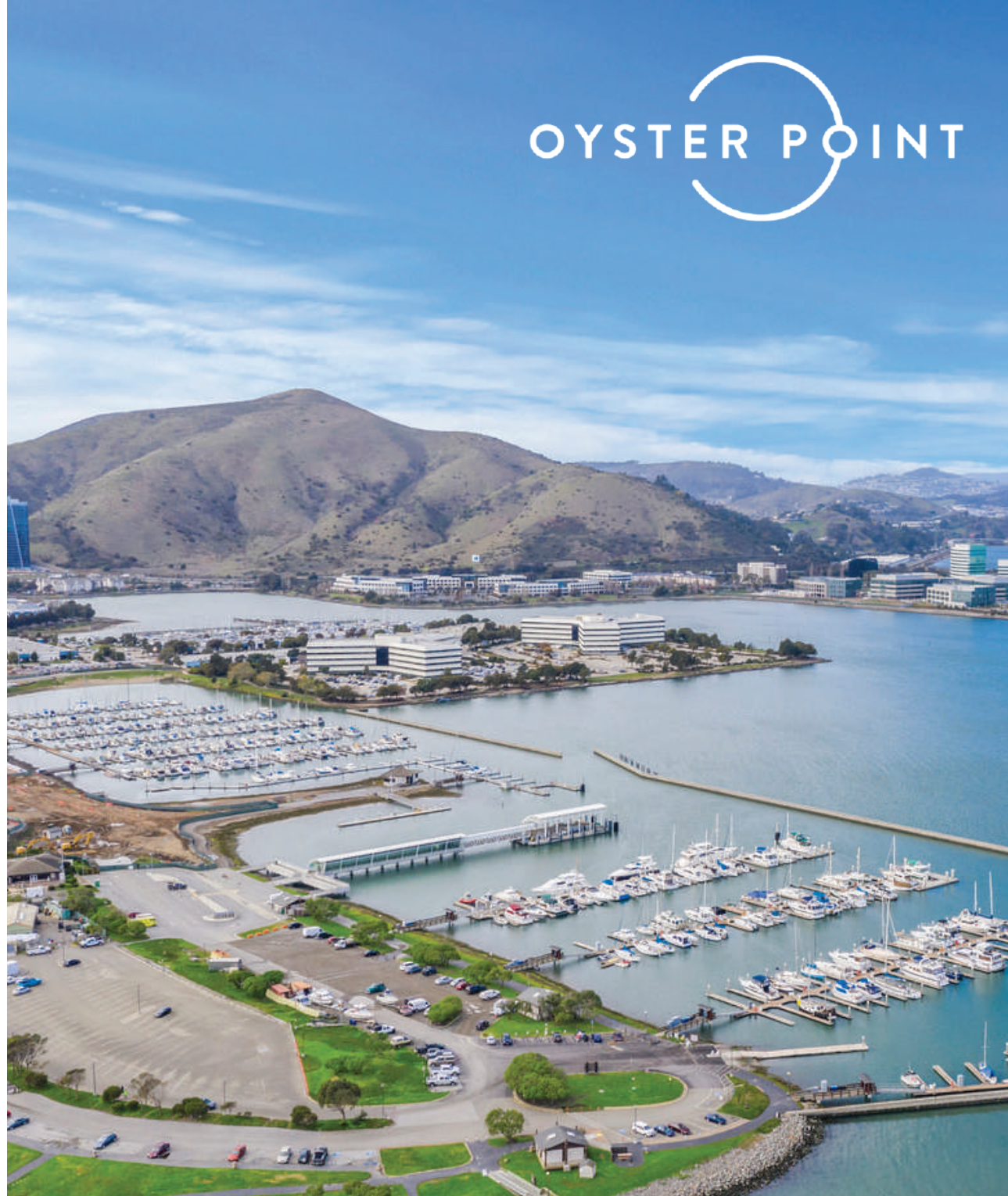
Oyster Point Marina Plaza (OPMP) is situated on the San Francisco Bay and enjoys spectacular water views. OPMP includes two, five-story office buildings of the highest quality. OPMP has attained LEED Platinum status, the highest environmentally friendly designation in the industry. OPMP has convenient shuttle transportation to BART, SamTrans, SF Ferry and Caltrans every half hour.

OPMP is conveniently located on Oyster Point Boulevard with immediate access to Highway 101 and the major transportation arterials of Highways 280 and 380. Locally tenants will find a plethora of restaurants and premier hotels, many within walking distance.

SUSTAINABILITY



In 2016, Oyster Point Marina Plaza earned and was awarded the 5-year certification of LEED (Leadership in Energy and Environmental Design) PLATINUM-EB (Existing Buildings) by the U.S.G.B.C. (United States Green Building Council). As part of our efforts to attain this prestigious recognition, we ask that our Tenants participate in energy conservation, recycling, and alternate forms of transportation, which can have a significant impact on the total energy usage each year as well as the opportunity to reduce our carbon footprint.



PROJECT

HIGHLIGHTS

±667 - ±71,783 RSF OFFICE SPACE FOR LEASE

- All New Building & Monument Signage (2021)
- Full Exterior Building Upgrade (2020)
- Upgraded HVAC/Mechanical System (2019)
- Spectacular San Francisco Bay Views
- Market Ready Suites Available Now
- Renovated Two-Story Atrium Lobby Areas
- New Outdoor Amenity Area Complete
- Renovated Fitness Center w/ Showers & Locker Room
- Direct Access to Miles of Bayfront Trails
- Convenient Access to BART, CalTrain, SamTrans and SF Ferry
- Walking Distance to New Water Shuttle Terminal to Jack London Square
- 3.4/1000 Parking on ±22 Acre Site
- 3 Upgraded Common Conference Rooms Available
- Training Room for Up to 35+ People (Others Available)
- Seven Day, 24-Hour Lobby Attendants with Card-Key Access After Hours
- On-Site Management and Building Engineers
- On-Site Full Service Restaurant & Deli (Catering Available) - Hana's Café
- New Laundry Locker Automated Dry Cleaning Service

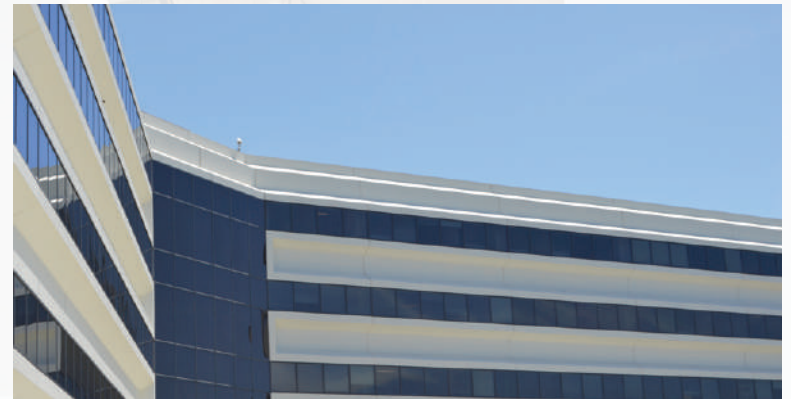
VIRTUAL CONFERENCE ROOM TOURS:



395 (CLICK HERE)



400 (CLICK HERE)



400 OYSTER POINT

±667 - ±3,229 RSF AVAILABLE

395 OYSTER POINT

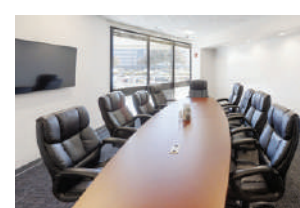
±749 - ±71,783 RSF AVAILABLE

NEW TRAINING ROOM



[PREVIEW HERE](#)

NEW CONFERENCE ROOM



[PREVIEW HERE](#)

OYSTER POINT



MARKET READY SUITES



WHAT'S NEW AT OYSTER POINT?

PROMINENT SIGNAGE

UPGRADED COMMON CONFERENCE CENTERS



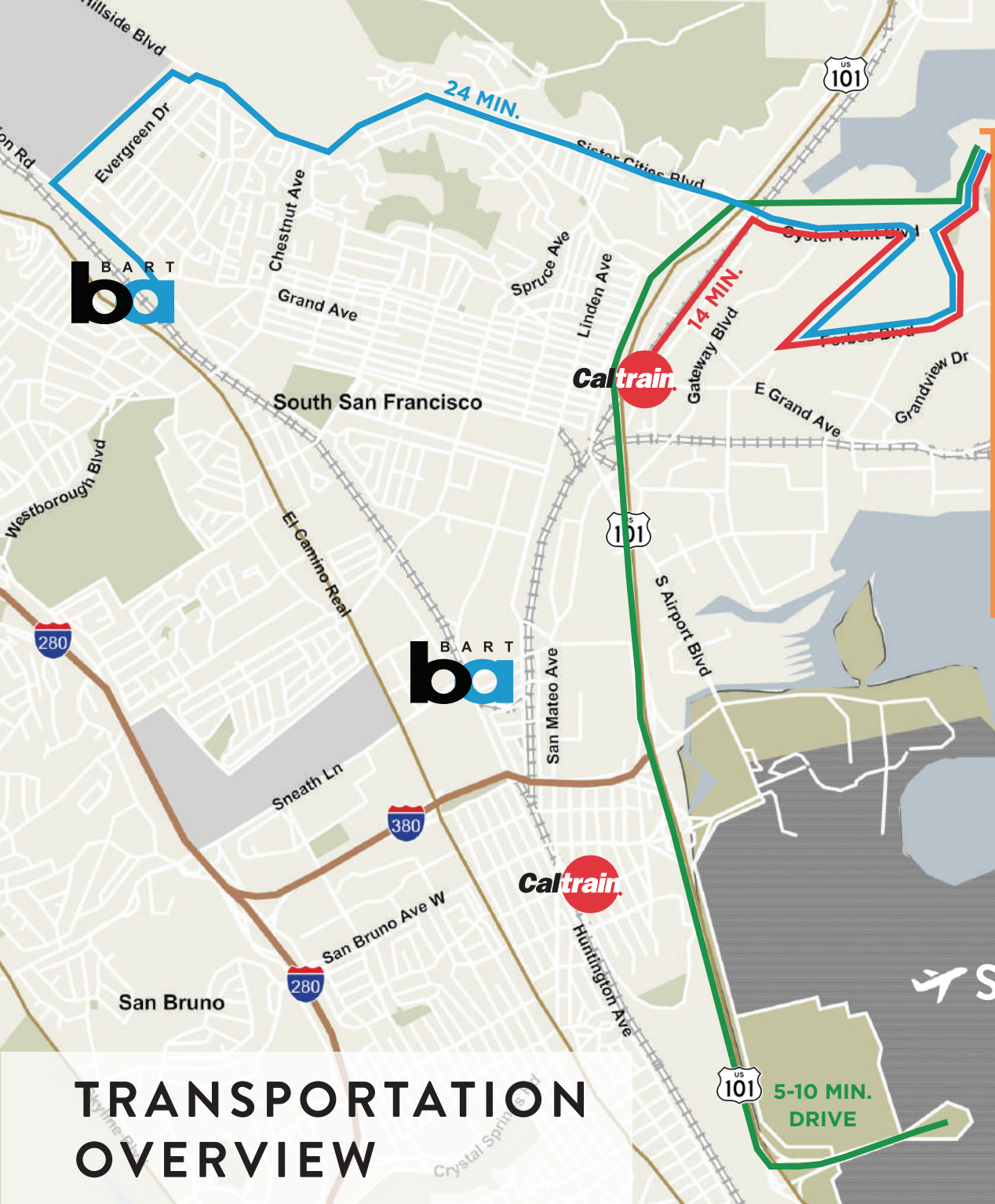
RECENTLY UPGRADED EXTERIOR





UPDATED FITNESS CENTERS



OYSTER POINT



OYSTER POINT SHUTTLE STOP

14 MINUTES 24 MINUTES

[CLICK HERE FOR SHUTTLE SCHEDULES](#)

TRANSPORTATION OVERVIEW

AMENITIES

RESTAURANTS

- | | |
|-----------------------------|------------------------------|
| 1 Hana's Café & Deli | 12 Taquerias El Farolito |
| 2 Oyster Café | 13 Cecilia's Pizzeria |
| 3 Specialty's | 14 Peet's Coffee |
| 4 Starbucks | 15 WhiteCaps Drinks + Eats |
| 5 Café de Casa | 16 Dunkin Donuts |
| 6 Darby Dan's Sandwiches | 17 HL Peninsula Restaurant |
| 7 Bertolucci's | 18 Foundry & Lux |
| 8 Thai Satay Restaurant/Bar | 19 Amoura Restaurant |
| 9 Los Compadres | 20 Café 382 |
| 10 Di Napoli Ristorante | 21 La Tapatia Mexicatessen |
| 11 Buon Gusto | 22 Armstrong Brewing Company |

HOTELS

- | | |
|-----------------------------|------------------------------|
| 1 Ramada Limited | 8 Embassy Suites |
| 2 Residence Inn by Marriott | 9 Comfort Inn & Suites |
| 3 Courtyard San Francisco | 10 Ramada Inn & Suites |
| 4 Four Points Sheraton | 11 DoubleTree by Hilton |
| 5 Larkspur Landing | 12 Homewood Suites by Hilton |
| 6 Hilton Garden Inn | 13 AC Hotel by Marriott |
| 7 Hampton Inn | |

LIFESTYLE

- | | |
|---------------------------|-----------------------------|
| 1 FedEx Service Center | 7 Bank of America |
| 2 AVIS Rent-A-Car | 8 Gateway Child Development |
| 3 UPS | 9 Full Grip Crossfit |
| 4 Oyster Point Yacht Club | 10 Oyster Point Park |
| 5 Costco Business Center | 11 Costco Wholesale |
| 6 Lowes | |



OYSTER POINT

±667 - ±71,783 RSF OFFICE SPACE FOR LEASE



SCOTT ENNIS | +1 408 572 4125 | scott.ennis@cushwake.com | LIC #00798264

CHRIS BLOM | +1 650 931 2210 | chris.blom@cushwake.com | LIC #02031205

CLARK STEELE | +1 408 436 3653 | clark.steele@cushwake.com | LIC #01995379



[VIEW SITE SPECIFIC COVID-19 PREVENTION PLAN](#)

Cushman & Wakefield Copyright 2021. No warranty or representation, express or implied, is made to the accuracy or completeness of the information contained herein, and same is submitted subject to errors, omissions, change of price, rental or other conditions, withdrawal without notice, and to any special listing conditions imposed by the property owner(s). As applicable, we make no representation as to the condition of the property (or properties) in question.