



# Mur-Len Rd & 135th Street

Olathe, Kansas

## Property Features

- 1 Pad Site Remaining
- Lot 3:
  - 47,500 SF Lot
  - 13,120 SF Building Proposed
  - Zoned: CP-2
  - Sale Price: \$356,250 (\$7.50 PSF)
- Located near retail and amenities
- Easy access to I-35

For more information:

**Mark Talley, CCIM, SIOR**

+1 913 956 5810

mtalley@nai-heartland.com

**Brandon LaSala**

+1 913 956 5815

brandon@nai-heartland.com



Available For Sale

## Santa Fe Commons Pad Sites

NO WARRANTY OR REPRESENTATION, EXPRESS OR IMPLIED, IS MADE AS TO THE ACCURACY OF THE INFORMATION CONTAINED HEREIN, AND THE SAME IS SUBMITTED SUBJECT TO ERRORS, OMISSIONS, CHANGE OF PRICE, RENTAL OR OTHER CONDITIONS, PRIOR SALE, LEASE OR FINANCING, OR WITHDRAWAL WITHOUT NOTICE, AND OF ANY SPECIAL LISTING CONDITIONS IMPOSED BY OUR PRINCIPALS NO WARRANTIES OR REPRESENTATIONS ARE MADE AS TO THE CONDITION OF THE PROPERTY OR ANY HAZARDS CONTAINED THEREIN ARE ANY TO BE IMPLIED.

4400 College Boulevard, Suite 170  
Overland Park, KS 66211  
[nai-heartland.com](http://nai-heartland.com)



# Aerial

Santa Fe Commons Pad Sites | Olathe, KS





# Proposed Plans

Santa Fe Commons Pad Sites | Olathe, KS



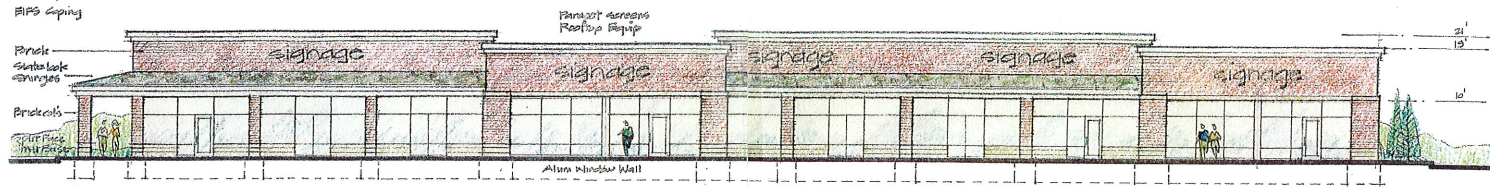
Side Elevation  
1/16" = 1' - 0"



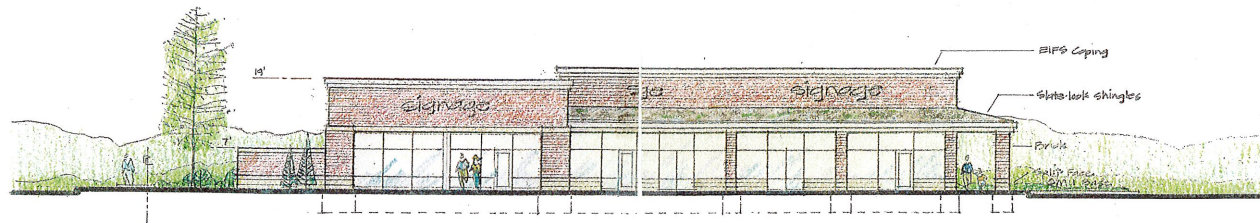
Front Elevation  
1/16" = 1' - 0"

# Elevations

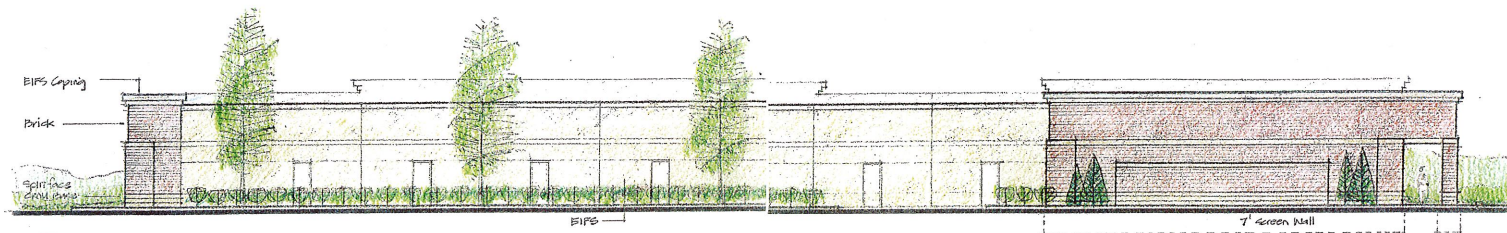
Santa Fe Commons Pad Sites | Olathe, KS



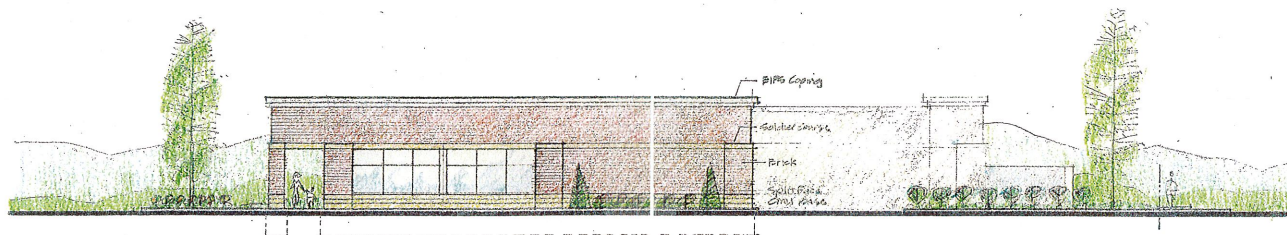
WEST VATION



NORTH VATION



EAST ELEVATION



SOUTH ELEVATION