

OFFICE SPACE AVAILABLE FOR LEASE

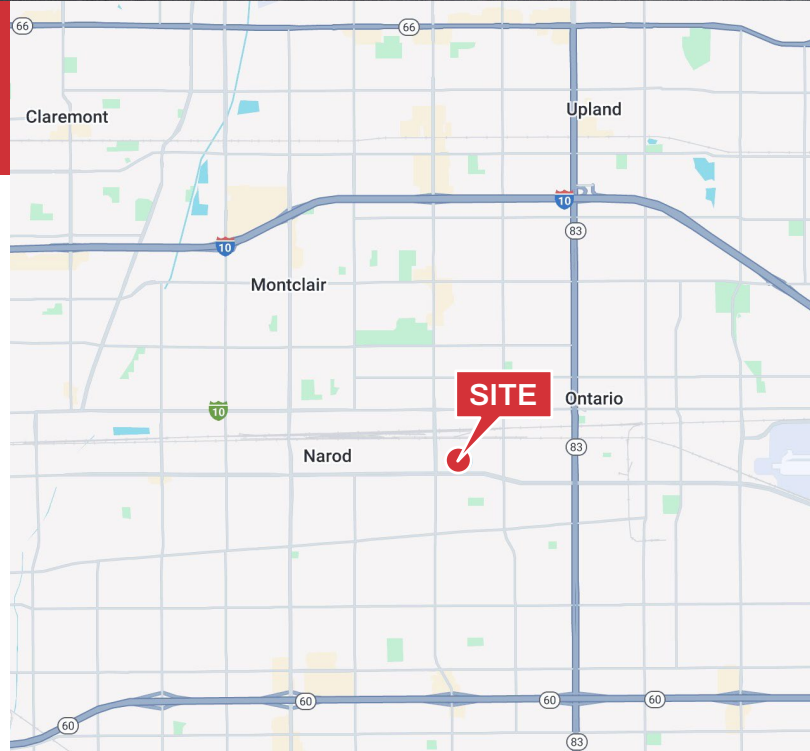
611 S. Palmetto Ave., Ontario, CA 91762



±10,772 SF OFFICE
\$0.99/SF MG

Property Highlights:

- Two Story Finished Office Space
- Part of Larger Building
- Open Bullpen Areas
- 12 Private Offices and Several Conference Rooms
- Kitchenette on 1st Floor and Full Kitchen on 2nd Floor
- Open plan Training/Event Space
- Shared Lobby Entrance and Private Side Entrance

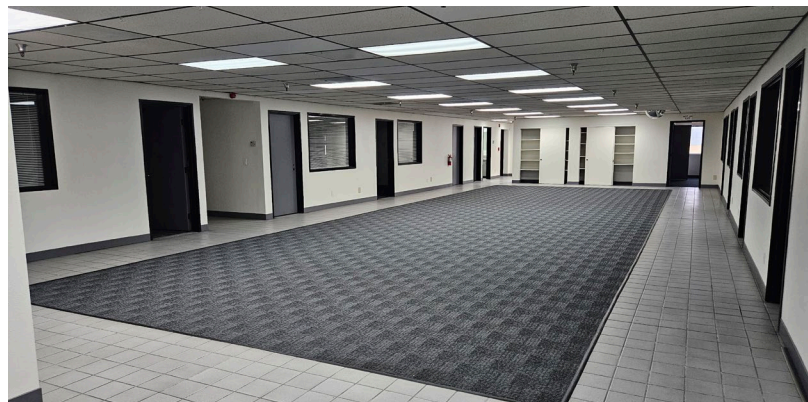
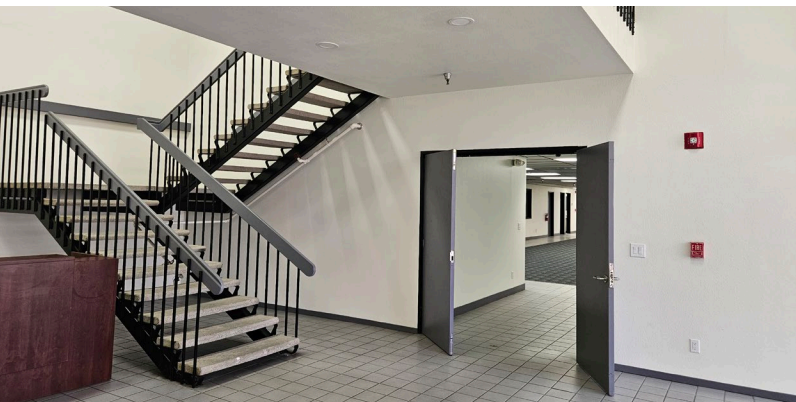


Ryan Campbell, SIOR
909.348.0606
rcampbell@naicapital.com
Cal DRE Lic #01341826

Tony Naples
323.922.5143
tnaples@lee-associates.com
Cal DRE Lic #01811344

NAI Capital Commercial
21660 Copley Drive Ste 320
Diamond Bar, CA 91765
Office: 909.348.0600

NAI Capital
COMMERCIAL REAL ESTATE SERVICES, WORLDWIDE



Ryan Campbell, SIOR
 909.348.0606
rcampbell@naicapital.com
 Cal DRE Lic #01341826

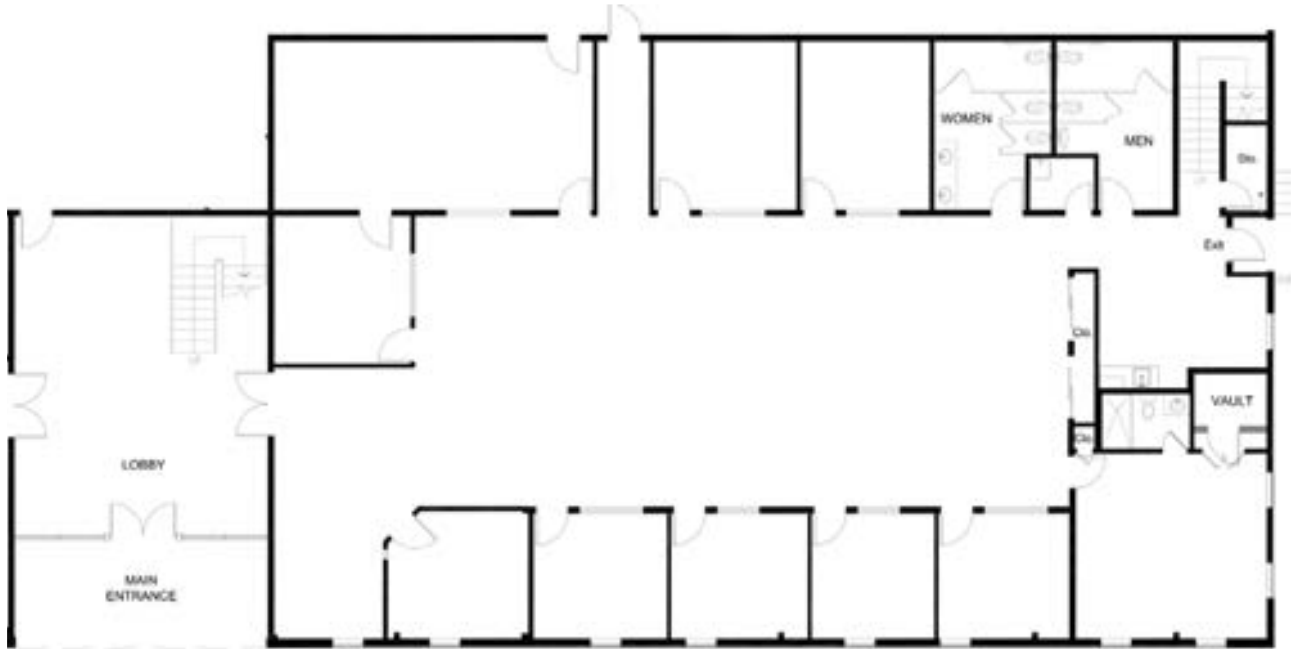
Tony Naples
 323.922.5143
tnaples@lee-associates.com
 Cal DRE Lic #01811344

NAI Capital Commercial
 21660 Copley Drive Ste 320
 Diamond Bar, CA 91765
 Office: 909.348.0600

NAI Capital
 COMMERCIAL REAL ESTATE SERVICES, WORLDWIDE

FLOOR PLANS

First Floor



Second Floor



No warranty, express or implied, is made as to the accuracy of the information contained herein. This information is submitted subject to errors, omissions, change of price, rental or other conditions, withdrawal without notice, and is subject to any special listing conditions imposed by our principals. Cooperating brokers, buyers, tenants and other parties who receive this document should not rely on it, but should use it as a starting point of analysis, and should independently confirm the accuracy of the information contained herein through a due diligence review of the books, records, files and documents that constitute reliable sources of the information described herein. Logos are for identification purposes only and may be trademarks of their respective companies. NAI Capital, Inc. Cal DRE Lic. #02130474.

Ryan Campbell, SIOR
909.348.0606
rcampbell@naicapital.com
Cal DRE Lic #01341826

Tony Naples
323.922.5143
tnaples@lee-associates.com
Cal DRE Lic #01811344

NAI Capital Commercial
21660 Copley Drive Ste 320
Diamond Bar, CA 91765
Office: 909.348.0600

NAI Capital
COMMERCIAL REAL ESTATE SERVICES, WORLDWIDE