

# 605

## Market Street

San Francisco CA 94105

TCN  
WORLDWIDE  
REAL ESTATE SERVICES

# For Lease

## \$35-\$45 PSF

**Craig Hansson**  
craig@starboardcre.com  
415.710.7768

**Mark Meier**  
mark@starboardcre.com  
415.299.7042

**Hans Hansson**  
hans@starboardcre.com  
415.517.2589



**STARBOARD CRE**  
LOCAL • INDEPENDENT • ENTREPRENEURIAL

# Building Summary

**Address:** 605 Market Street

**Property Type:** Office

**Space:** 6 Spaces Available

**Listing Price Range:** \$35-\$45 PSF

**Term:** Negotiable

**Building Hight:** 14 Stories

**Fully Serviced**

## Spaces

14	<b>Suite 1400</b> ±4,628 SF 14th Floor	
9	<b>Suite 910</b> ±2,296 SF 9th Floor	
8	<b>Suite 800</b> ±3,716 SF 8th Floor	
5	<b>Suite 500</b> ±1,489 SF 5th Floor	<b>Suite 503</b> ±582 SF 5th Floor
4	<b>Suite 400</b> ±595 SF 4th Floor	



# Highlights



## Central Financial Hub

Adjacent to top financial and tech firms.



## Excellent Transit Connections

Nearby public transit, half block from Montgomery BART.



## Flexible Space Options

Provides flexible full or partial floor leasing.



## Rich Amenities Nearby

Close to many dining and social spots.



## Stunning views

Stunning downtown views.





# 14th Floor

---

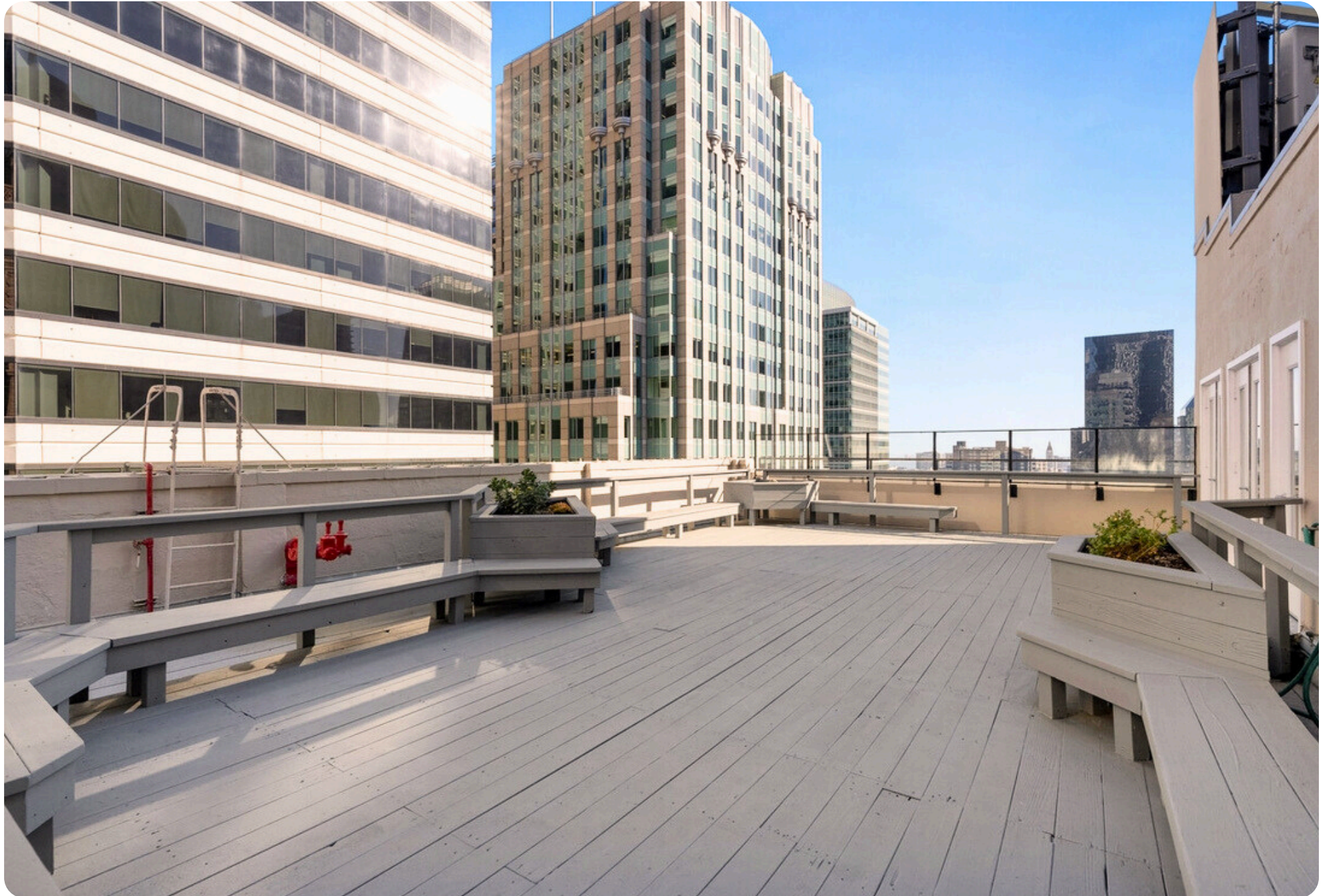
## Suite 1400

- ±4,628 SQFT
- \$45 PSF - Fully Serviced
- Full floor
- Penthouse suite with an exclusive outside deck overlooking 2nd Street
- Multiple sides of natural lights
- Open Area
- 13 Private Offices
- Kitchenette





# 14th Floor | Images



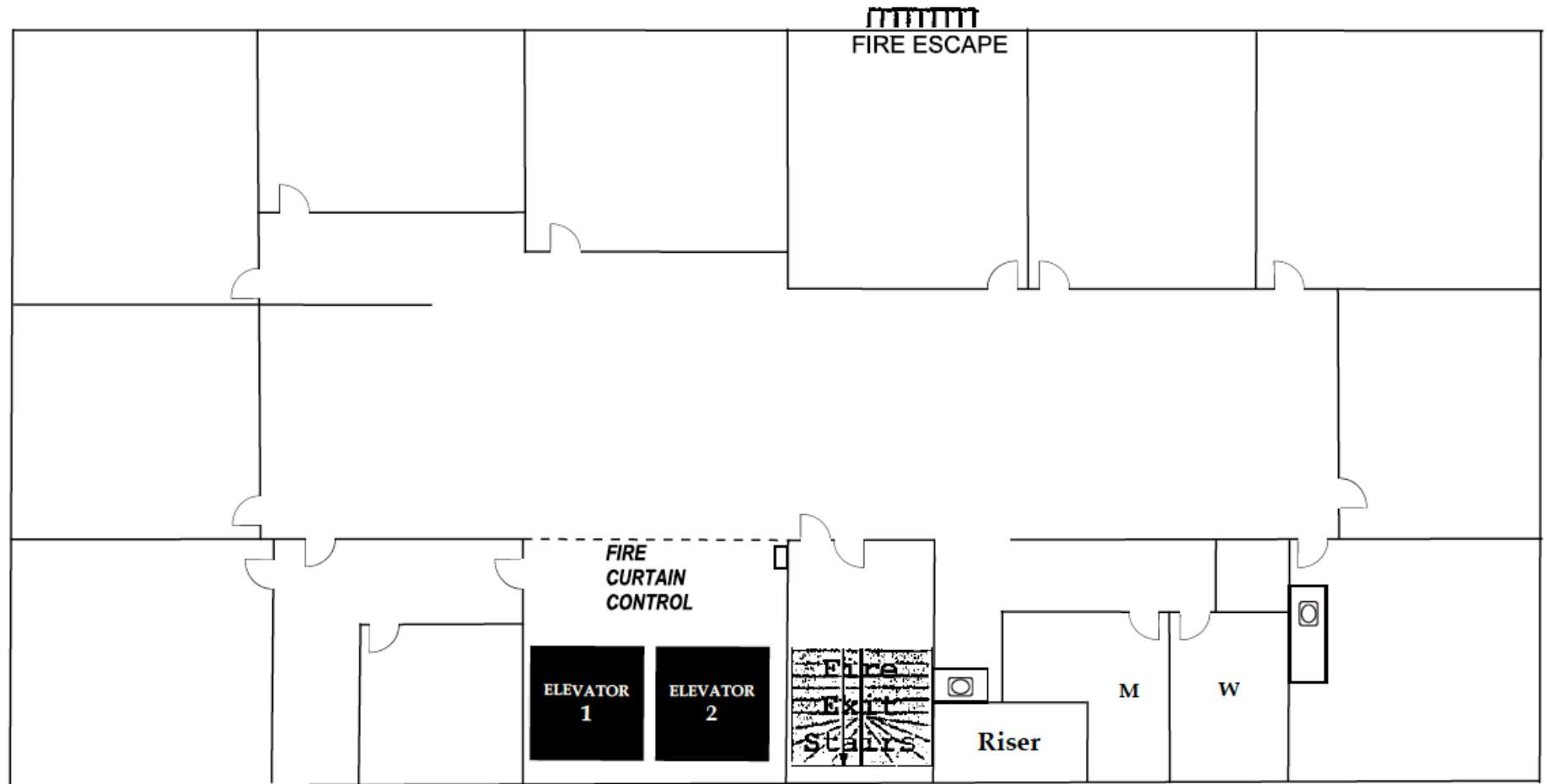


# 14th Floor | Images





# 14th Floor | Floorplan





# 9th Floor

---

## Suite 910

- ±2,296 SQFT
- Open layout
- 1 conf room
- 2 offices
- Kitchenette
- 2 restrooms



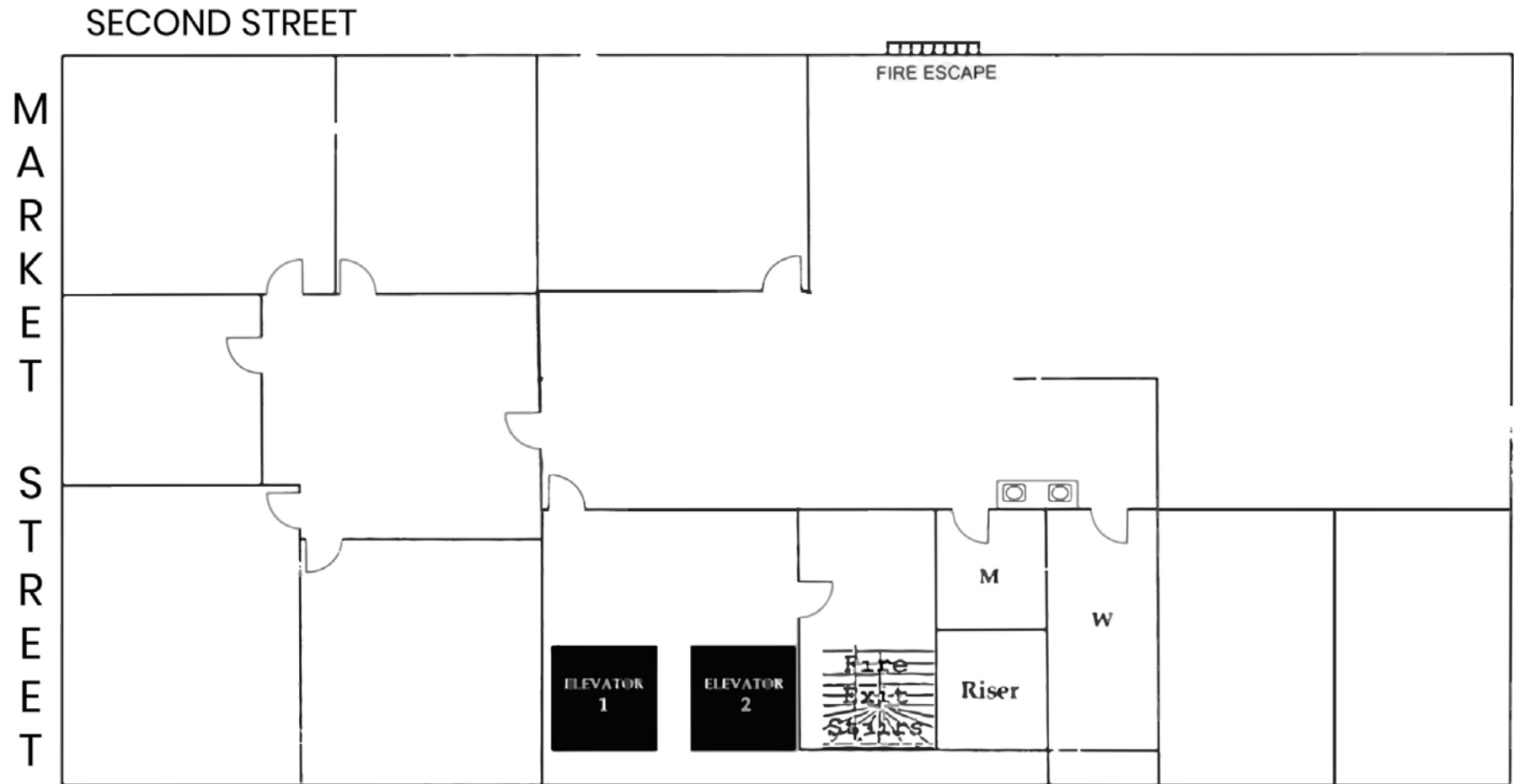


# 9th Floor | Images



# 9th Floor | Floorplan

## 9th Floor





# 8th Floor

---

## Suite 800

- ±3,716 SQFT
- \$35-\$45 PSF - Fully Serviced
- Full floor
- Recently completed spec suite
- Open layout
- Nine private offices
- One Kitchenette
- Two restrooms



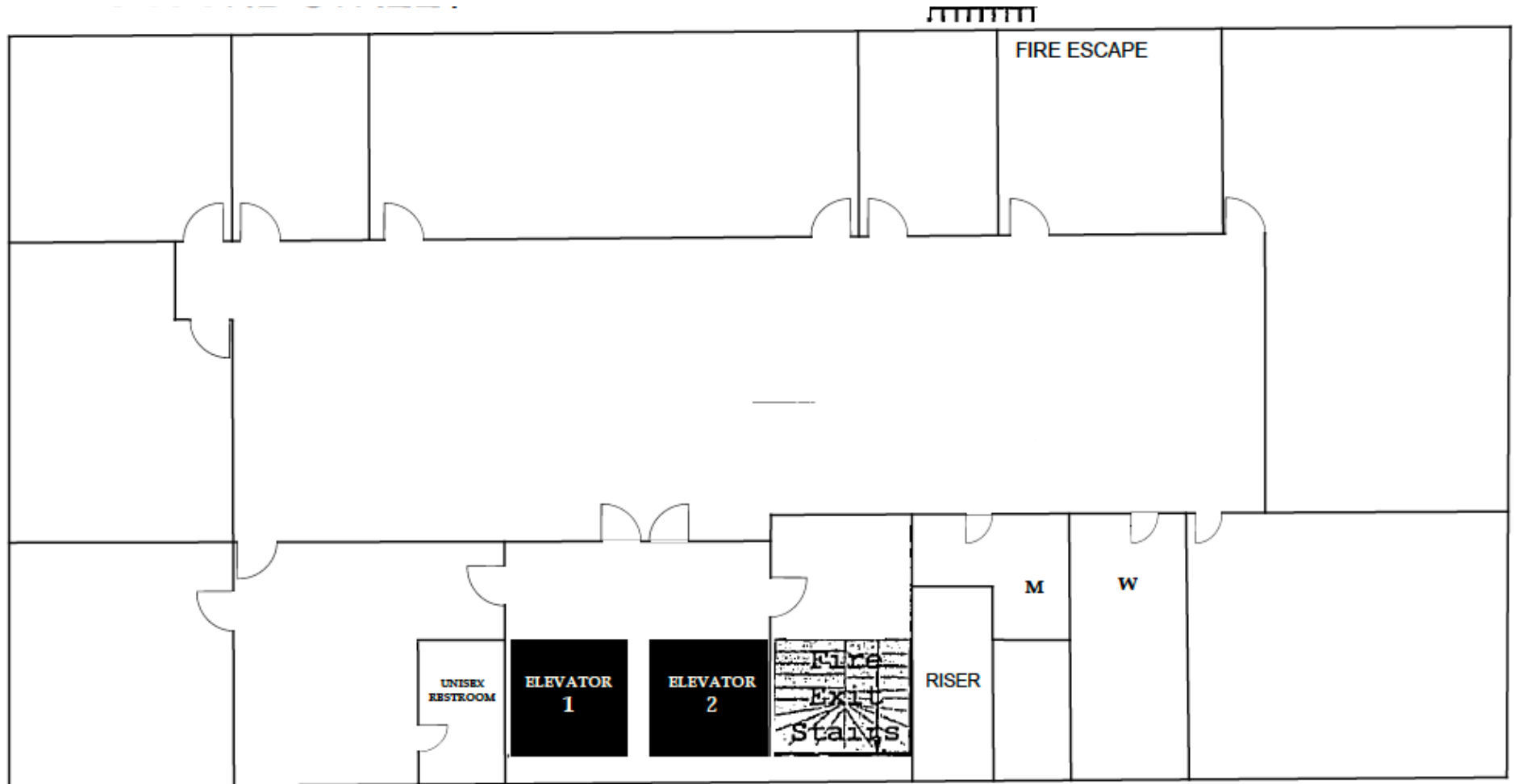


# 8th Floor | Images





# 8th Floor | Floorplan





# 5th Floor

---

## Suite 500

- ±1,489 SQFT
- Recently completed spec suite
- Open layout
- Two private offices
- One kitchenette

## Suite 503

- ±582 SQFT
- \$35-\$45 PSF - Fully Serviced
- Recently renovated
- Open area
- One private office
- Kitchenette



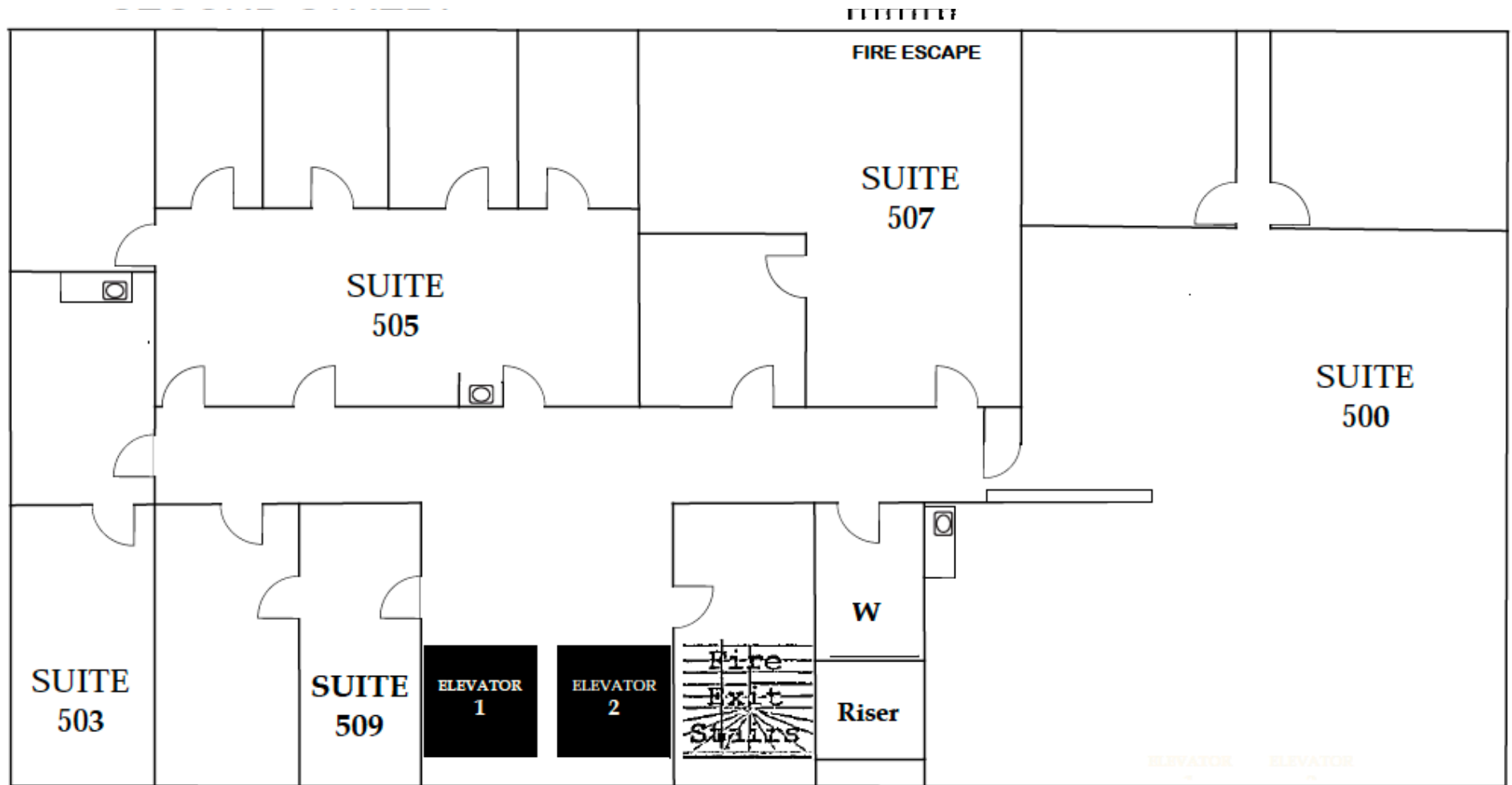


# 5th Floor | Images





# 5th Floor | Floorplan



# 4th Floor

---

## Suite 400

- ±595 SQFT
- \$35 PSF - Fully Serviced



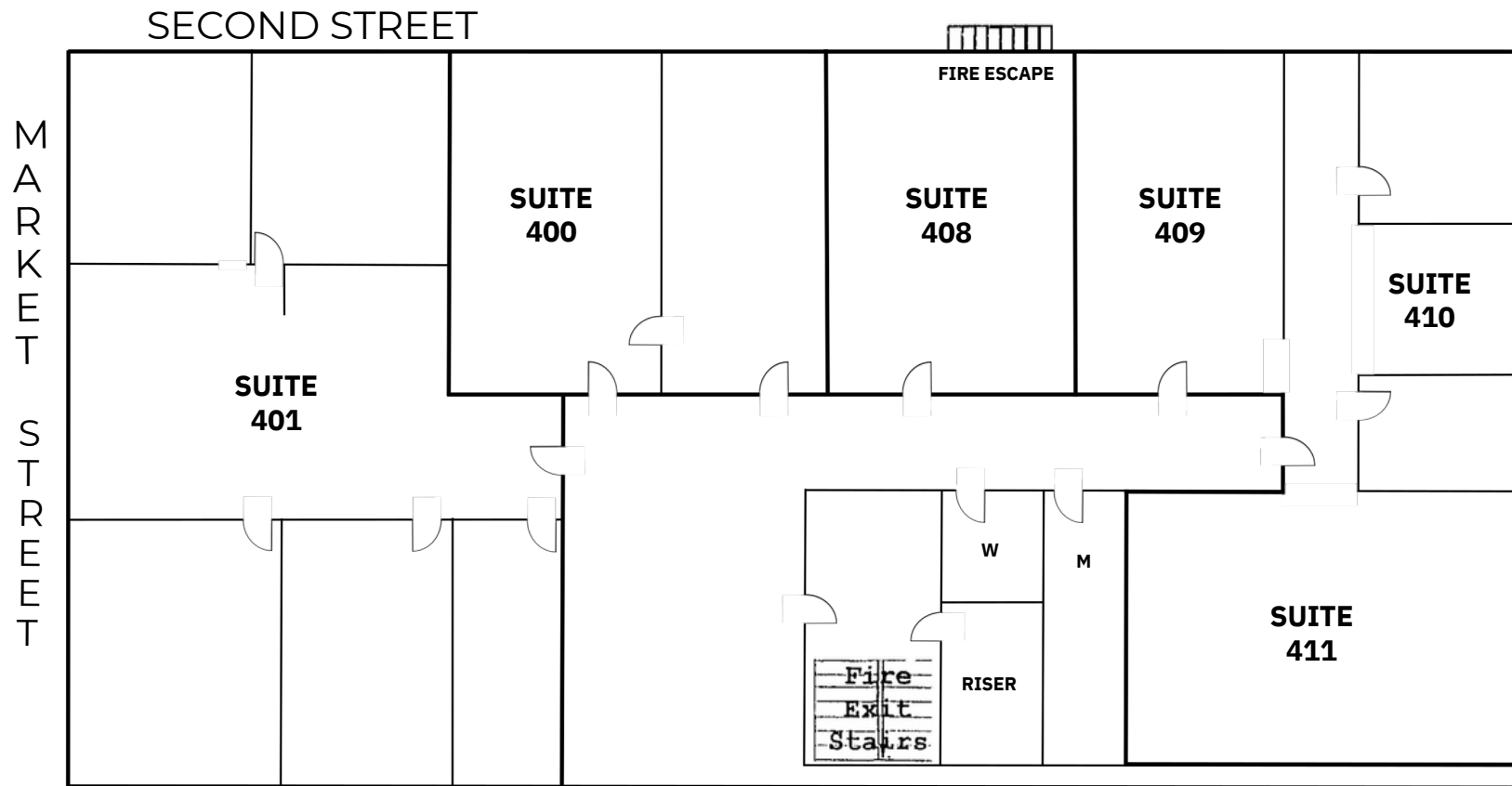


# 4th Floor | Images



# 4th Floor | Floorplan

## 4th Floor





# Aerial View



STARBOARD CRE  
LOCAL • INDEPENDENT • ENTREPRENEURIAL



# Team

---



## Craig Hansson

Vice President  
craig@starboardcre.com  
CELL: 415.710.7768  
CA DRE #01841643

Call

View Profile



## Mark Meier

Senior Leasing & Sales Associate  
mark@starboardcre.com  
CELL: 415.299.7042  
CA DRE # 02047169

Call

View Profile



## Hans Hansson

President / Broker of Record  
hans@starboardcre.com  
CELL: 415.517.2589  
CA DRE # 00872902

Call

View Profile



STARBOARD CRE  
LOCAL • INDEPENDENT • ENTREPRENEURIAL





**STARBOARD CRE**  
LOCAL • INDEPENDENT • ENTREPRENEURIAL

STARBOARDCRE.COM  
OFC. PHONE 415.765.6900  
49 POWELL STREET, SAN FRANCISCO, CA 94102



## Unique Vision

We see what others miss

## Local Market Leader

No one knows Northern  
California like we do

## Full-Service Firm

We do it all

Locally based, and technology-forward, our brokers are highly qualified experts backed by a full-service, in-house support team who understand the intricacies of San Francisco real estate. Starboard CRE brings decades of brokerage experience representing over 600 million square feet of space with an aggregate lease value of over 10 billion and investments sold over 3 billion.

**CA DRE# 01103056**

**TCN**  
WORLDWIDE  
REAL ESTATE SERVICES

**AREA**  
ASSOCIATED REALTY OF THE AMERICAS