

# PARKSIDE BUSINESS CENTER

8082 SW NIMBUS AVE, UNIT 6A, BEAVERTON, OR



## *3,500 SF of Office Warehouse For Lease*

Unit 6-A 3,500 SF total

1,649 SF office

1,851 SF warehouse

1 dock in the back (No 53' truck access)

Available now

NNN's estimated at \$0.465/SF (including taxes, insurance, CAM, water, sewer, garbage, and all HVAC costs)

**BRENDAN MURPHY**  
503.721.2705  
brendan.murphy@kidder.com

**PETER STALICK**  
503.221.2272  
peter.stalick@kidder.com

**STEVEN KLEIN**  
503.221.2260  
steven.klein@kidder.com

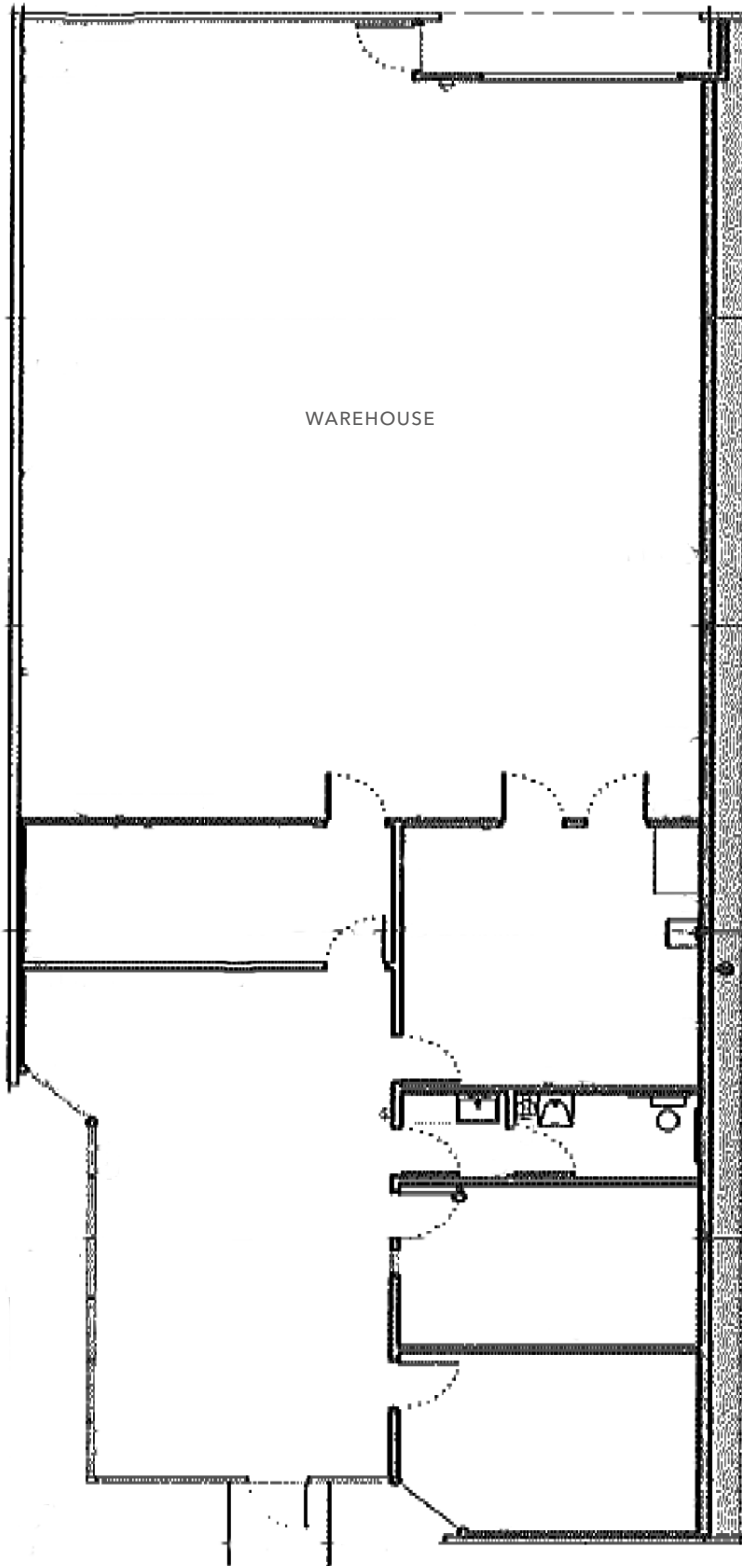
OWNED BY



**KIDDER.COM**

This information supplied herein is from sources we deem reliable. It is provided without any representation, warranty, or guarantee, expressed or implied as to its accuracy. Prospective Buyer or Tenant should conduct an independent investigation and verification of all matters deemed to be material, including, but not limited to, statements of income and expenses. Consult your attorney, accountant, or other professional advisor.





## UNIT 6-A

*3,500 SF*

AVAILABLE

*1,649 SF*

OFFICE SPACE

*ONE*

DOCK DOOR

[KIDDER.COM](http://KIDDER.COM)

This information supplied herein is from sources we deem reliable. It is provided without any representation, warranty, or guarantee, expressed or implied as to its accuracy. Prospective Buyer or Tenant should conduct an independent investigation and verification of all matters deemed to be material, including, but not limited to, statements of income and expenses. Consult your attorney, accountant, or other professional advisor.

# SITE PLAN



**BRENDAN MURPHY**  
503.721.2705  
brendan.murphy@kidder.com

**PETER STALICK**  
503.221.2272  
peter.stalick@kidder.com

**STEVEN KLEIN**  
503.221.2260  
steven.klein@kidder.com

**KIDDER.COM**

This information supplied herein is from sources we deem reliable. It is provided without any representation, warranty, or guarantee, expressed or implied as to its accuracy. Prospective Buyer or Tenant should conduct an independent investigation and verification of all matters deemed to be material, including, but not limited to, statements of income and expenses. Consult your attorney, accountant, or other professional advisor.