

FOR LEASE

Suite 170 - 3,700 SF Office Space Available



WESTPORT BUSINESS PARK

6925 Portwest Drive, Houston, TX 77024

MOVE-IN READY



Westport Business Park | 6925 Portwest Drive

PROPERTY HIGHLIGHTS

Located in Westport Business Park – just inside the 610 Loop, South of Old Katy Road with direct access to I-10 and 610 Loop in both directions.

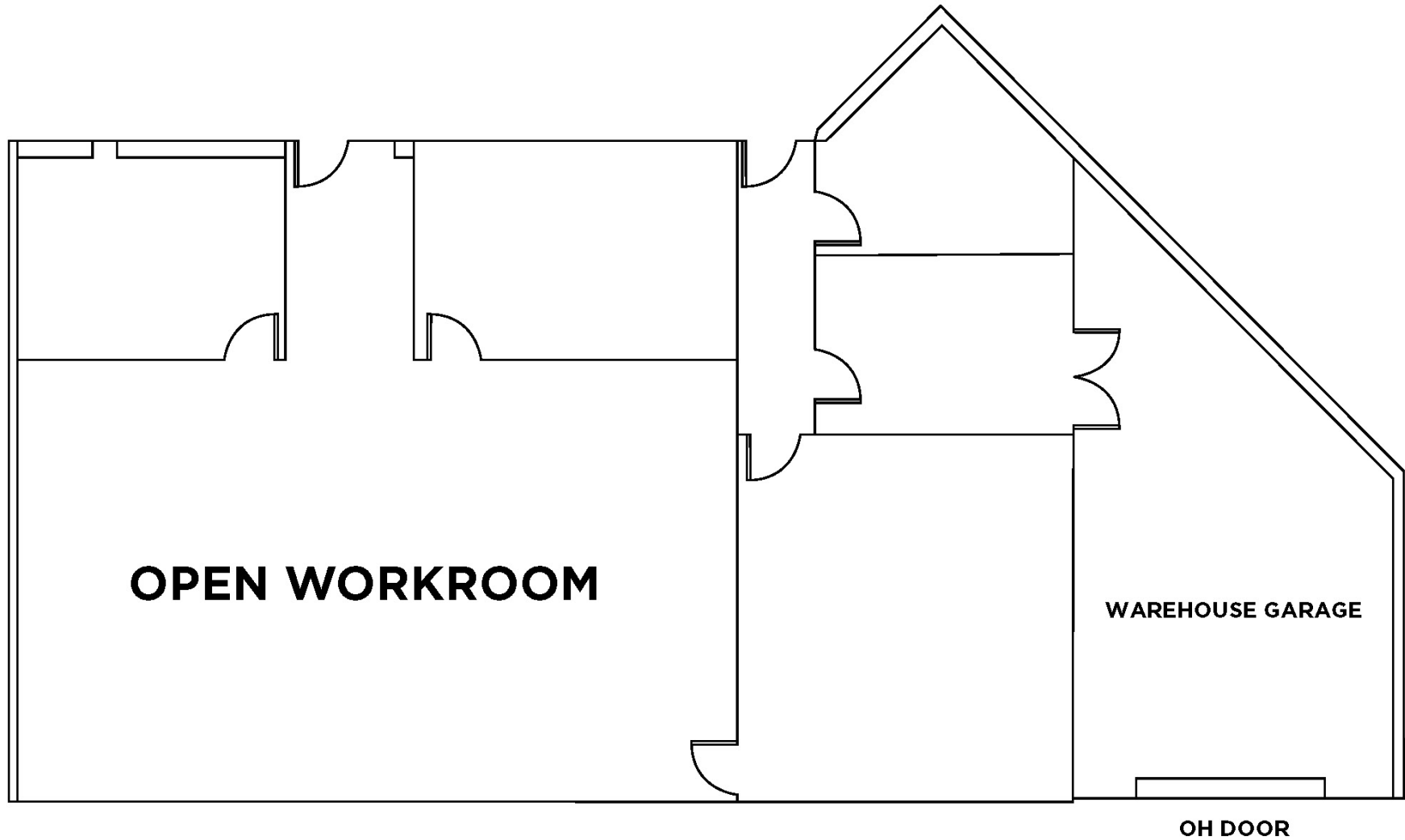
Lease Terms: 3,700 SF Immediate Availability

Property Features: Office/ Work Area/ Large Conference Room/ Warehouse.

Loading Doors: (1) Grade Level Overhead Door

Property Management on Site





SUITE 170 - 3,700 SF



**FLOOR
PLAN**

Westport Business Park | 6925 Portwest Drive

BUILDING PHOTOS



LOCATION AERIAL



6925 Portwest Dr
Suite 170

Westport Business Park | 6925 Portwest Drive



LOCATION MAP





CONTACT INFORMATION

Michael Foreman

michael.foreman@cushwake.com

+1 713 963 2850

Iryna Falyk

iryna.falyk@cushwake.com

+1 713 260 0226

Ownership & Management

J A Billipp Company

*Commercial and Industrial Real Estate
Development and Investment*



**CUSHMAN &
WAKEFIELD**

©2025 Cushman & Wakefield. All rights reserved. The information contained in this communication is strictly confidential. This information has been obtained from sources believed to be reliable but has not been verified. NO WARRANTY OR REPRESENTATION, EXPRESS OR IMPLIED, IS MADE AS TO THE CONDITION OF THE PROPERTY (OR PROPERTIES) REFERENCED HEREIN OR AS TO THE ACCURACY OR COMPLETENESS OF THE INFORMATION CONTAINED HEREIN; AND SAME IS SUBMITTED SUBJECT TO ERRORS, OMISSIONS, CHANGE OF PRICE, RENTAL OR OTHER CONDITIONS, WITHDRAWAL WITHOUT NOTICE, AND TO ANY SPECIAL LISTING CONDITIONS IMPOSED BY THE PROPERTY OWNER(S). ANY PROJECTIONS, OPINIONS OR ESTIMATES ARE SUBJECT TO UNCERTAINTY AND DO NOT SIGNIFY CURRENT OR FUTURE PROPERTY PERFORMANCE.