

17337 VENTURA BOULEVARD

ENCINO, CA 91316



AVAILABILITIES & HIGHLIGHTS

Available Space:

| FLOOR | SUITE | SIZE | RATE | USE |
|----------------|----------------|-------------------|----------------------|---------------------------------|
| 2nd | 200 | 2,342 SF | \$2.35 FS | Office |
| 2nd | 202 | 1,312 SF | \$2.35 FS | Office |
| 2nd | 200 & 202 | 3,654 SF | \$2.35 FS | Office |
| 2nd | B-211 | 818 SF | \$2.35 FS | Office |
| 2nd | 218 | 381 SF | \$2.35 FS | Office LEASED |
| 2nd | 222 | 478 SF | \$2.35 FS | Office |
| 2nd | B-300 | 2,660 SF | \$2.35 FS | Office |

Parking:

Unreserved parking at \$95 per space per month
Reserved parking at \$140 per space per month

For more information, contact:

ADAM COMORA

Senior Vice President
c. 818 521 2623 | o. 818 742 1610
acomora@naicapital.com | Cal DRE Lic#01312271

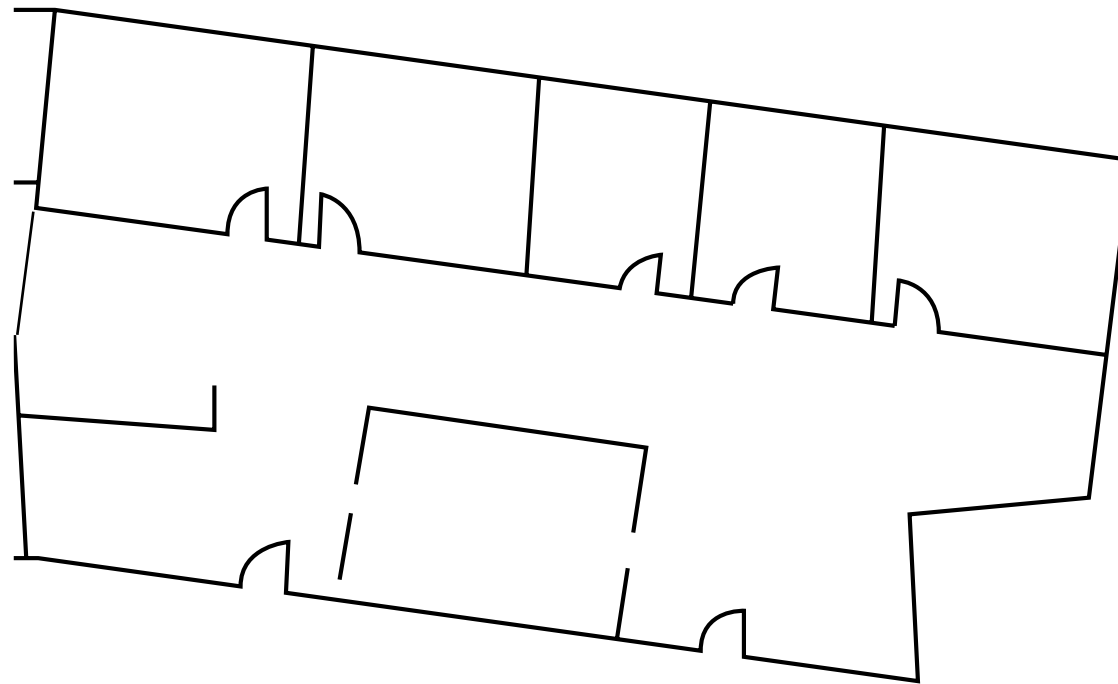
TODD RIZZARDI

Senior Associate
c. 310 310 1227 | o. 818 815 2422
trizzardi@naicapital.com | Cal DRE Lic#01506894

FLOOR PLAN

SUITE 200 • 2,342 SF

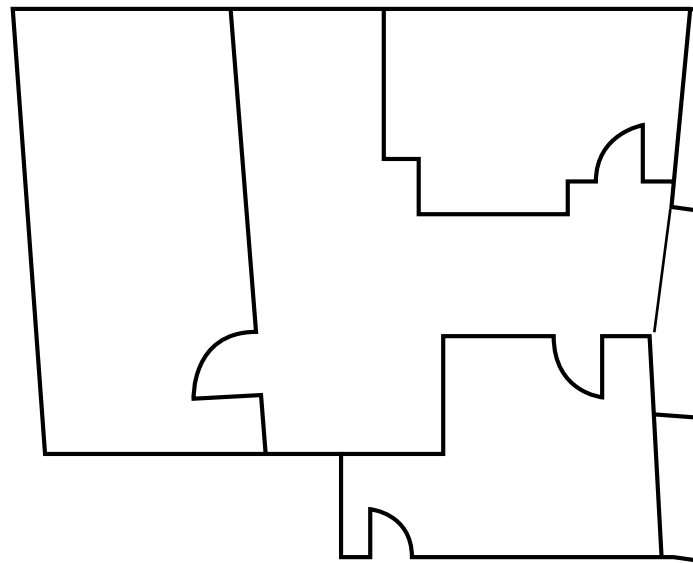
Not to scale and may not be accurate. For illustration purposes only.



FLOOR PLAN

SUITE 202 • 1,312 SF

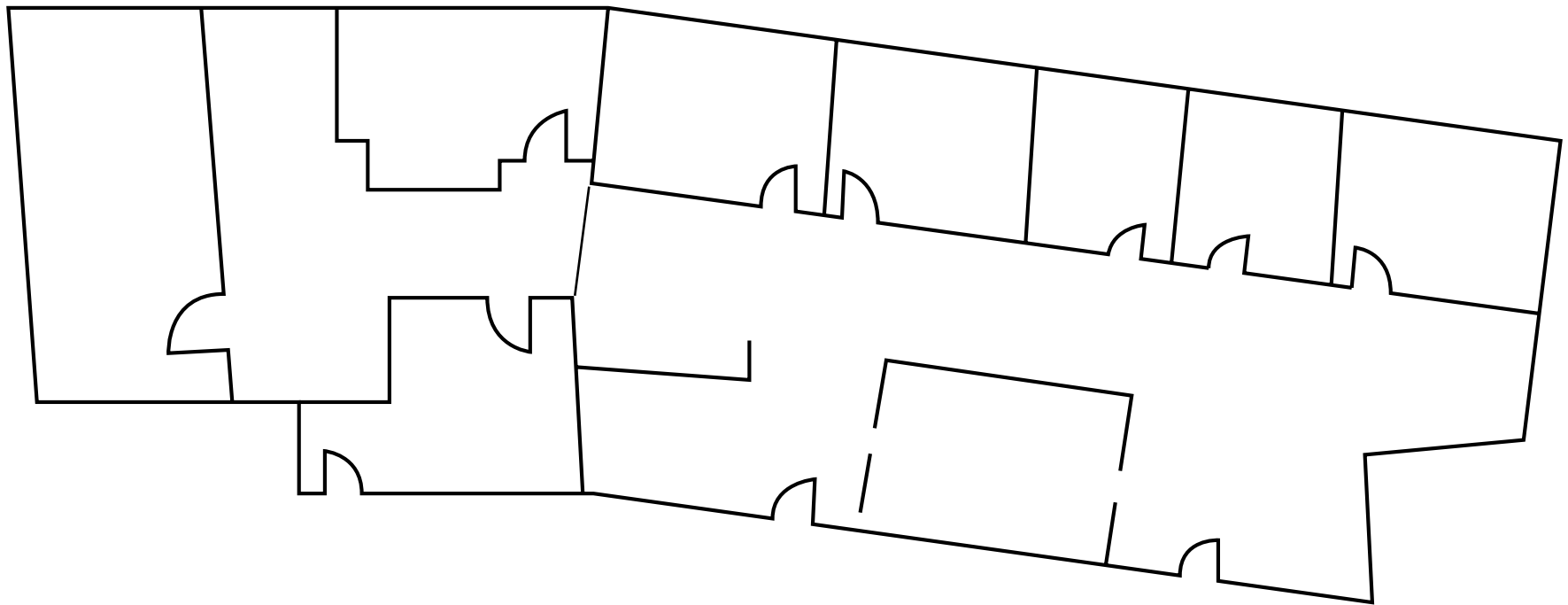
Not to scale and may not be accurate. For illustration purposes only.



FLOOR PLAN

SUITE 200 & 202 • 3,654 SF

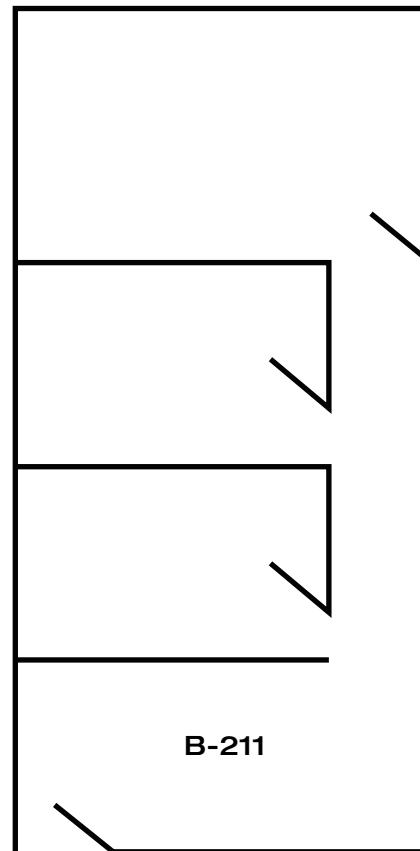
Not to scale and may not be accurate. For illustration purposes only.



FLOOR PLAN

SUITE B-211 • 818 SF

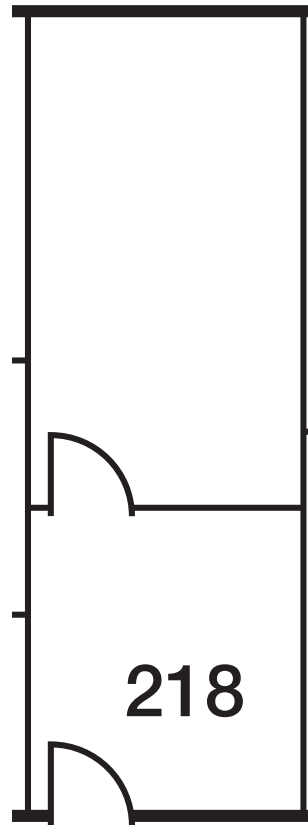
Not to scale and may not be accurate. For illustration purposes only.



FLOOR PLAN

SUITE 218 • 381 SF

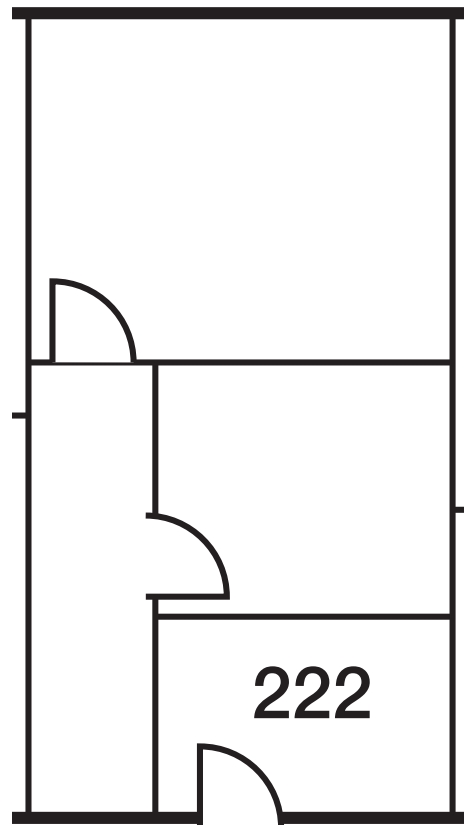
Not to scale and may not be accurate. For illustration purposes only.



FLOOR PLAN

SUITE 222 • 478 SF

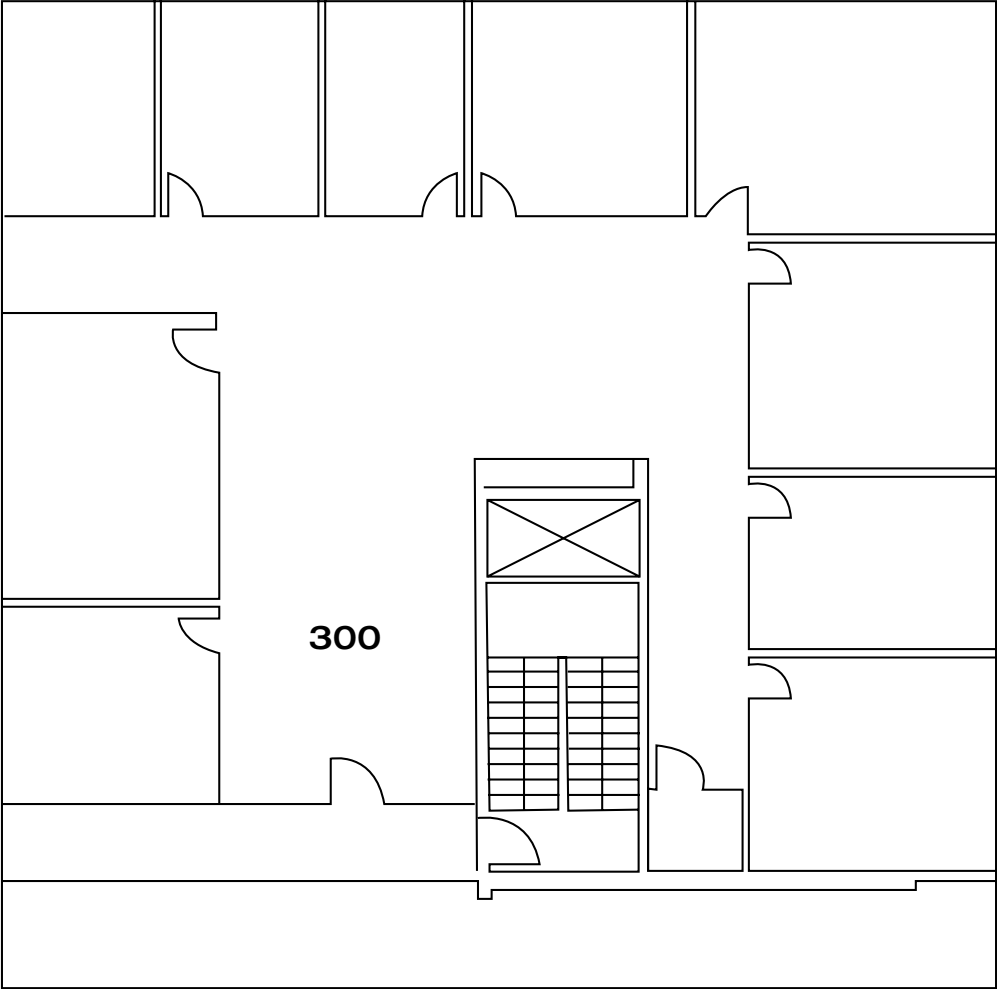
Not to scale and may not be accurate. For illustration purposes only.



FLOOR PLAN

SUITE B-300 • 2,660 SF

Not to scale and may not be accurate. For illustration purposes only.



17337 VENTURA BOULEVARD

ENCINO, CA 91316

THE BOULEVARD TEAM

LEASING AND SALES EXPERTS

ADAM COMORA

Senior Vice President

c. 818 521 2623 | o. 818 742 1610

acomora@naicapital.com | Cal DRE Lic#01312271

TODD RIZZARDI

Senior Associate

c. 310 310 1227 | o. 818 815 2422

trizzardi@naicapital.com | Cal DRE Lic#01506894



COMMERCIAL REAL ESTATE SERVICES, WORLDWIDE

No warranty, express or implied, is made as to the accuracy of the information contained herein. This information is submitted subject to errors, omissions, change of price, rental or other conditions, withdrawal without notice, and is subject to any special listing conditions imposed by our principals. Cooperating brokers, buyers, tenants and other parties who receive this document should not rely on it, but should use it as a starting point of analysis, and should independently confirm the accuracy of the information contained herein through a due diligence review of the books, records, files and documents that constitute reliable sources of the information described herein. NAI Capital CA DRE #01990696