

Phoenix Offices Available for Lease

2411 W Northern Ave, Phoenix, AZ 85021



- Availability within Northern Office Plaza
- Located on the SEC of I-17 and Northern Ave
- Suite 104: +/- 1,127 SF
- Suite 106: +/- 1,409 SF (Contiguous with Suite 107)
- Suite 107: +/- 1,019 SF (Contiguous with Suite 106)
- Suite 206: +/- 1,088 SF
- Lease Rate: \$24.00 PSF NNN
- Frontage along Northern Ave with up to 35,000 VPD
- Close proximity to Business and Retail Amenities

www.menlocre.com/property

Nicholas Aldini
Junior Advisor
nick@menlocre.com

P: 480.659.1777 • F: 480.535.5854
www.menlocre.com

Phoenix Offices Available for Lease

2411 W Northern Ave, Phoenix, AZ 85021

Suite 104

Page 2



Phoenix Offices Available for Lease

2411 W Northern Ave, Phoenix, AZ 85021

Suite 106/107

Page 3



MENLO GROUP
480.659.1777
1809 S Holbrook Ln, Tempe, AZ 85281
menlocre.com

NICHOLAS ALDINI
480.846.0601
nick@menlocre.com

 **Menlo Group**
COMMERCIAL REAL ESTATE

Phoenix Offices Available for Lease

2411 W Northern Ave, Phoenix, AZ 85021

Suite 206

Page 4



MENLO GROUP
480.659.1777
1809 S Holbrook Ln, Tempe, AZ 85281
menlocre.com

NICHOLAS ALDINI
480.846.0601
nick@menlocre.com

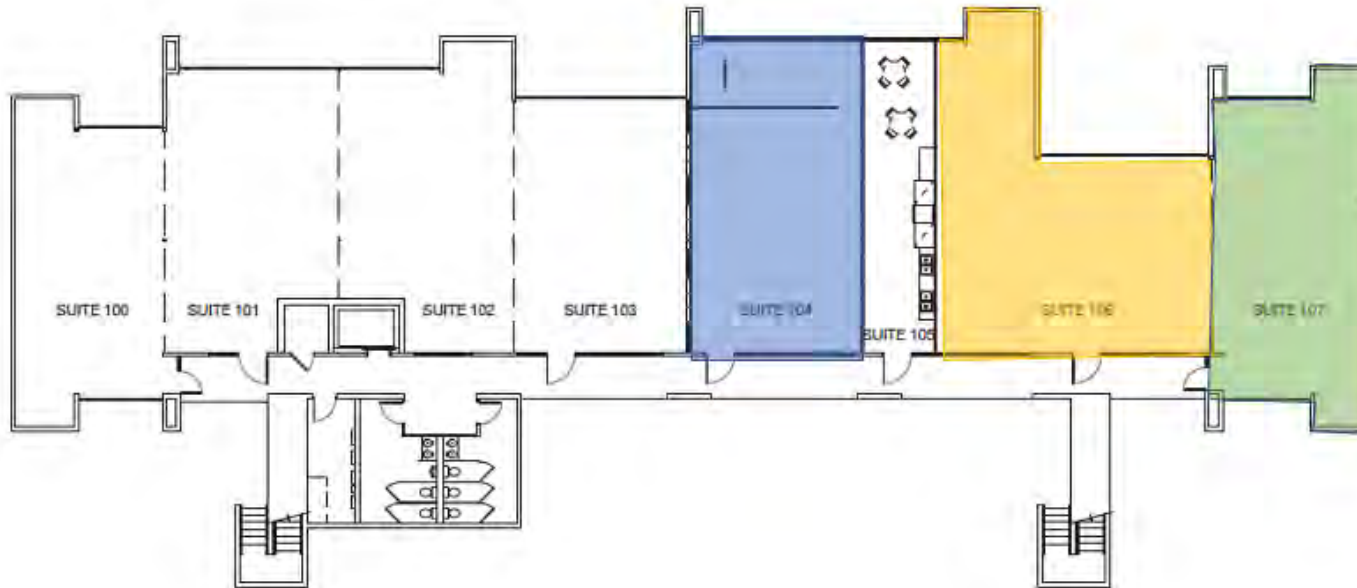


Phoenix Offices Available for Lease

2411 W Northern Ave, Phoenix, AZ 85021

Floor Plan 1st Floor

Page 5



FIRST FLOOR
SCALE: 1/16" = 1'-0"

FLOOR PLAN
2411 W NORTHERN AVENUE
PHOENIX, ARIZONA

MENLO GROUP
480.659.1777
1809 S Holbrook Ln, Tempe, AZ 85281
menlocre.com

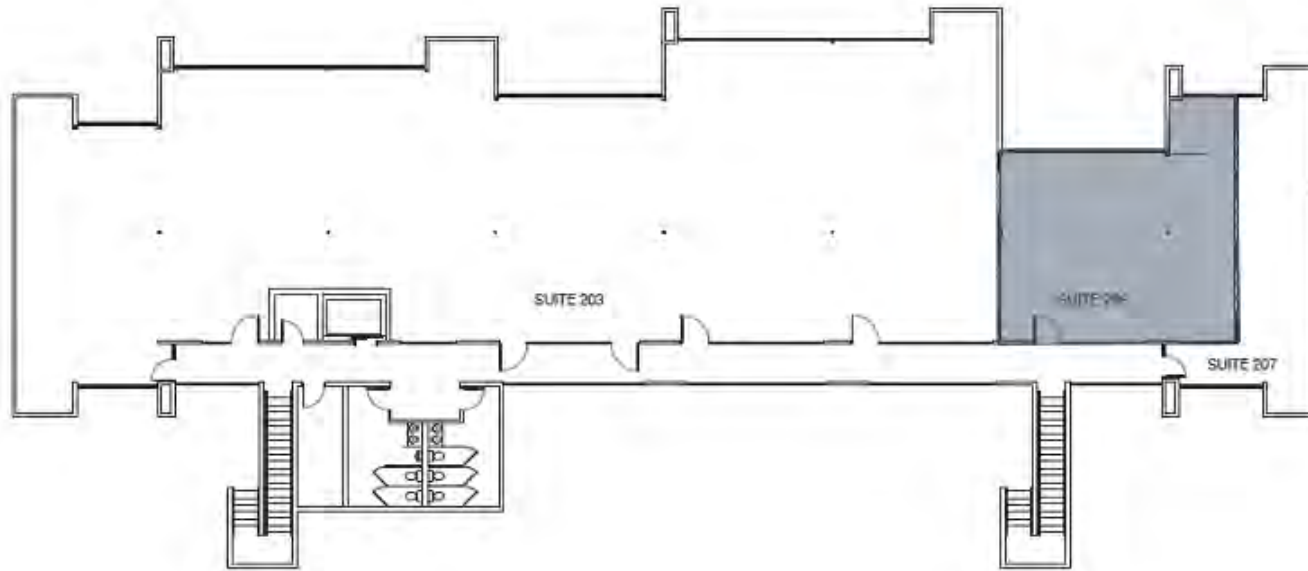
NICHOLAS ALDINI
480.846.0601
nick@menlocre.com

 **Menlo Group**
COMMERCIAL REAL ESTATE

Phoenix Offices Available for Lease

2411 W Northern Ave, Phoenix, AZ 85021

Floor Plan 2nd Floor



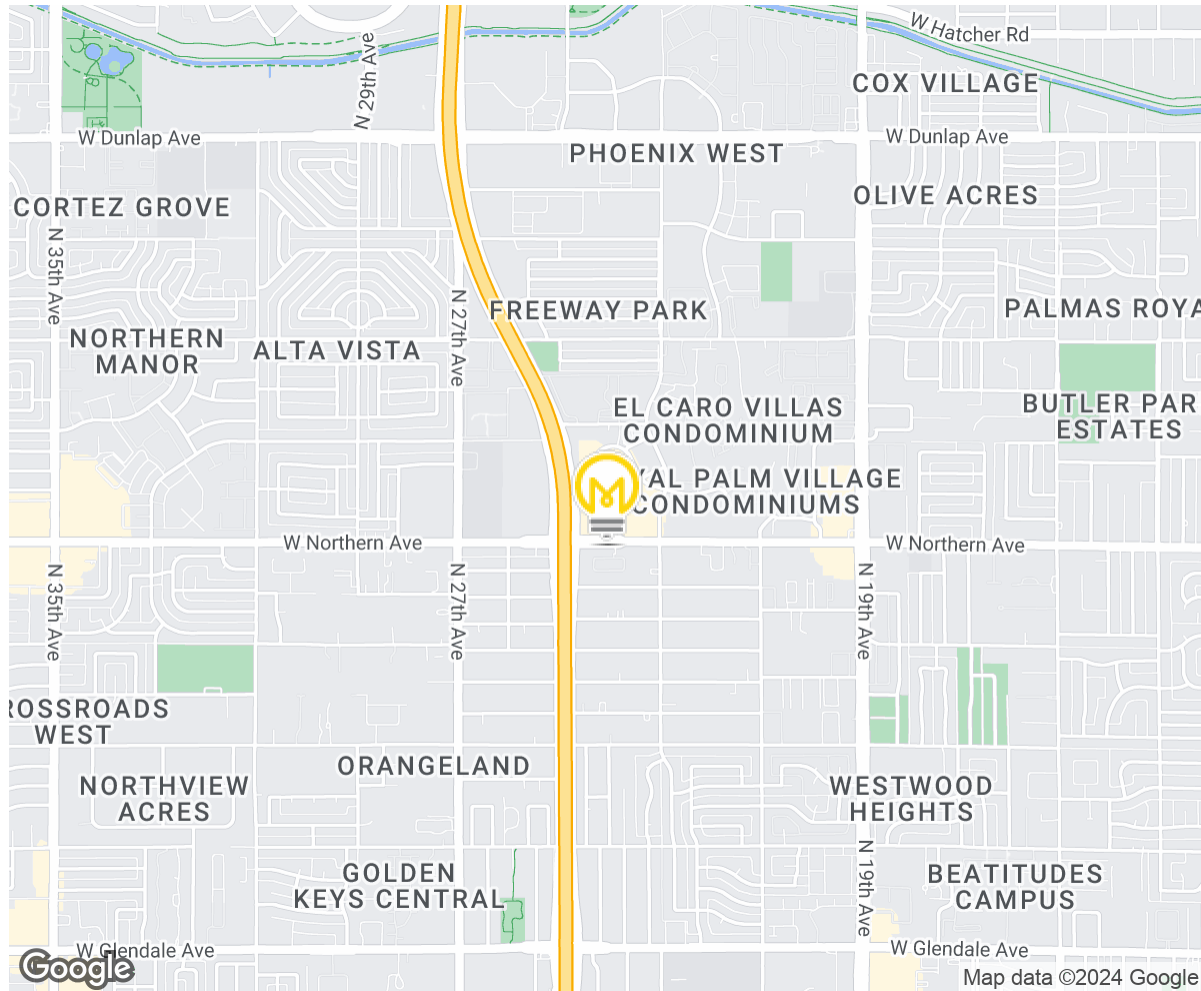
SECOND FLOOR
SCALE: 1/16" = 1'-0"
NORTH

FLOOR PLAN
2411 W NORTHERN AVENUE
PHOENIX, ARIZONA

Phoenix Offices Available for Lease

2411 W Northern Ave, Phoenix, AZ 85021

Site Details



DEMOGRAPHICS	0.3 Miles	0.5 Miles	1 Mile
Total Households:	554	2,771	9,524
Total Population:	1,320	6,514	24,098
Average HH Income:	\$56,702	\$62,126	\$72,734

MENLO GROUP
480.659.1777
1809 S Holbrook Ln, Tempe, AZ 85281
menlocre.com

NICHOLAS ALDINI
480.846.0601
nick@menlocre.com

