

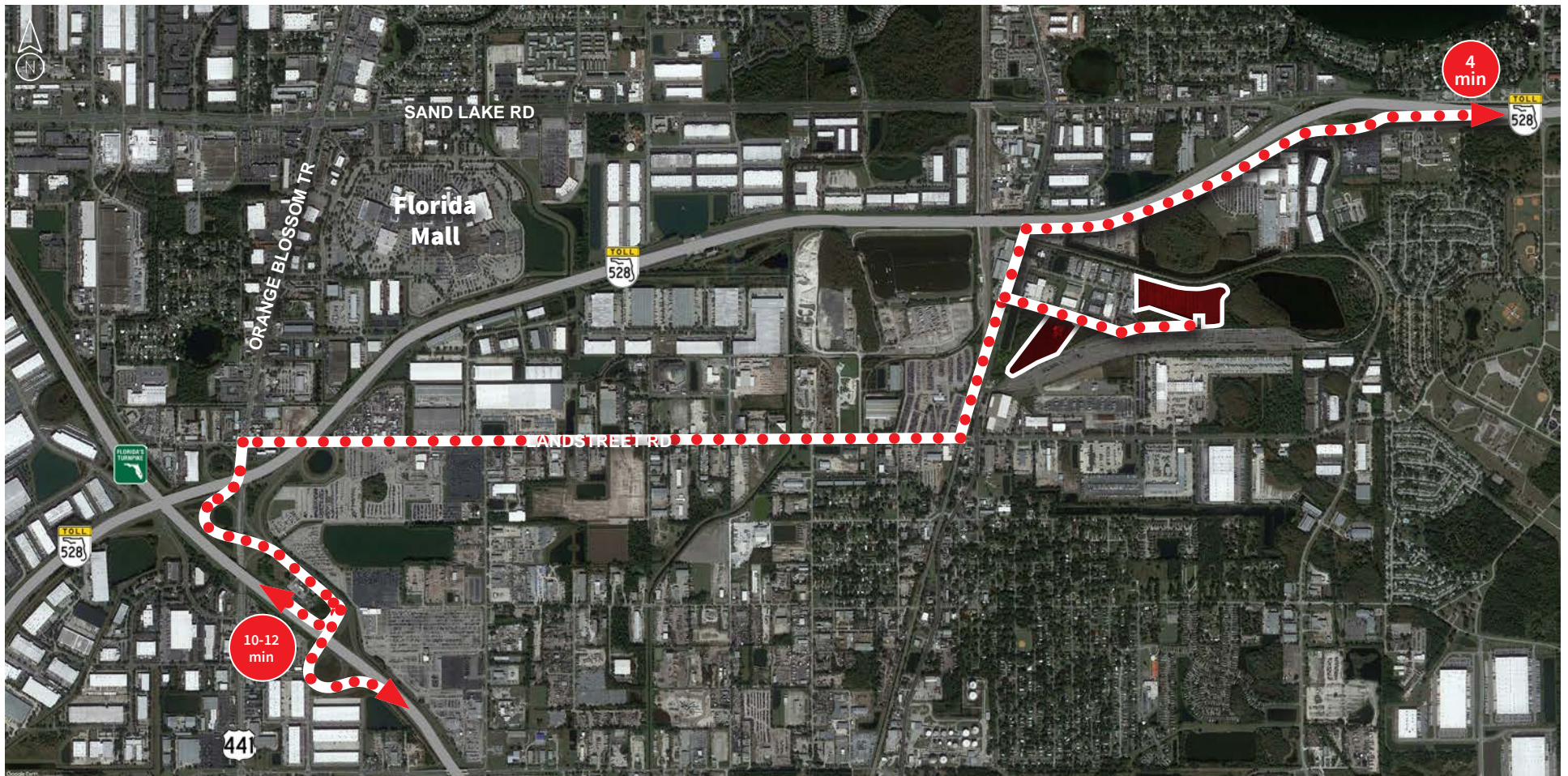


ORANGE AVE & PINE AVE

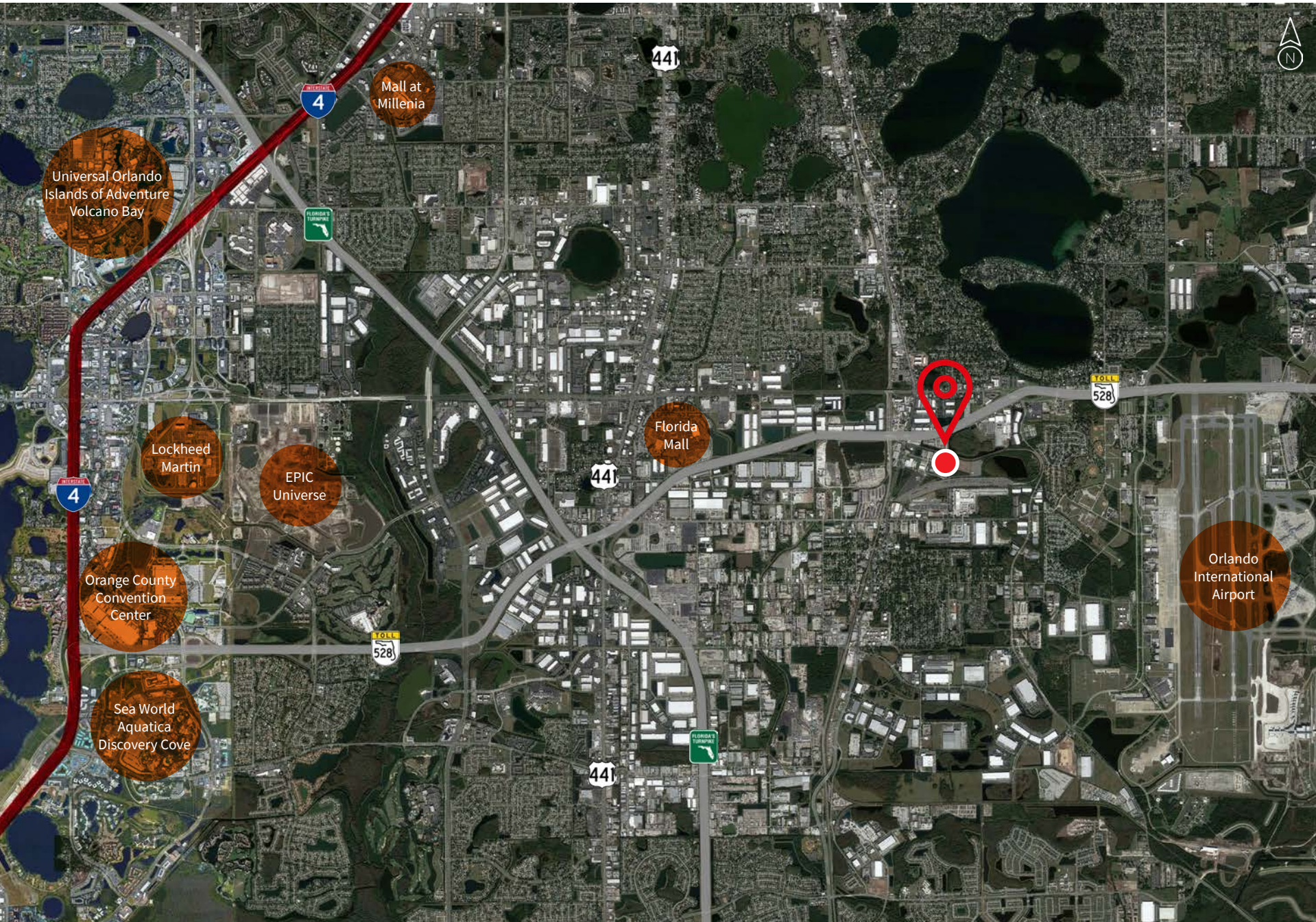
Orlando, FL 32824

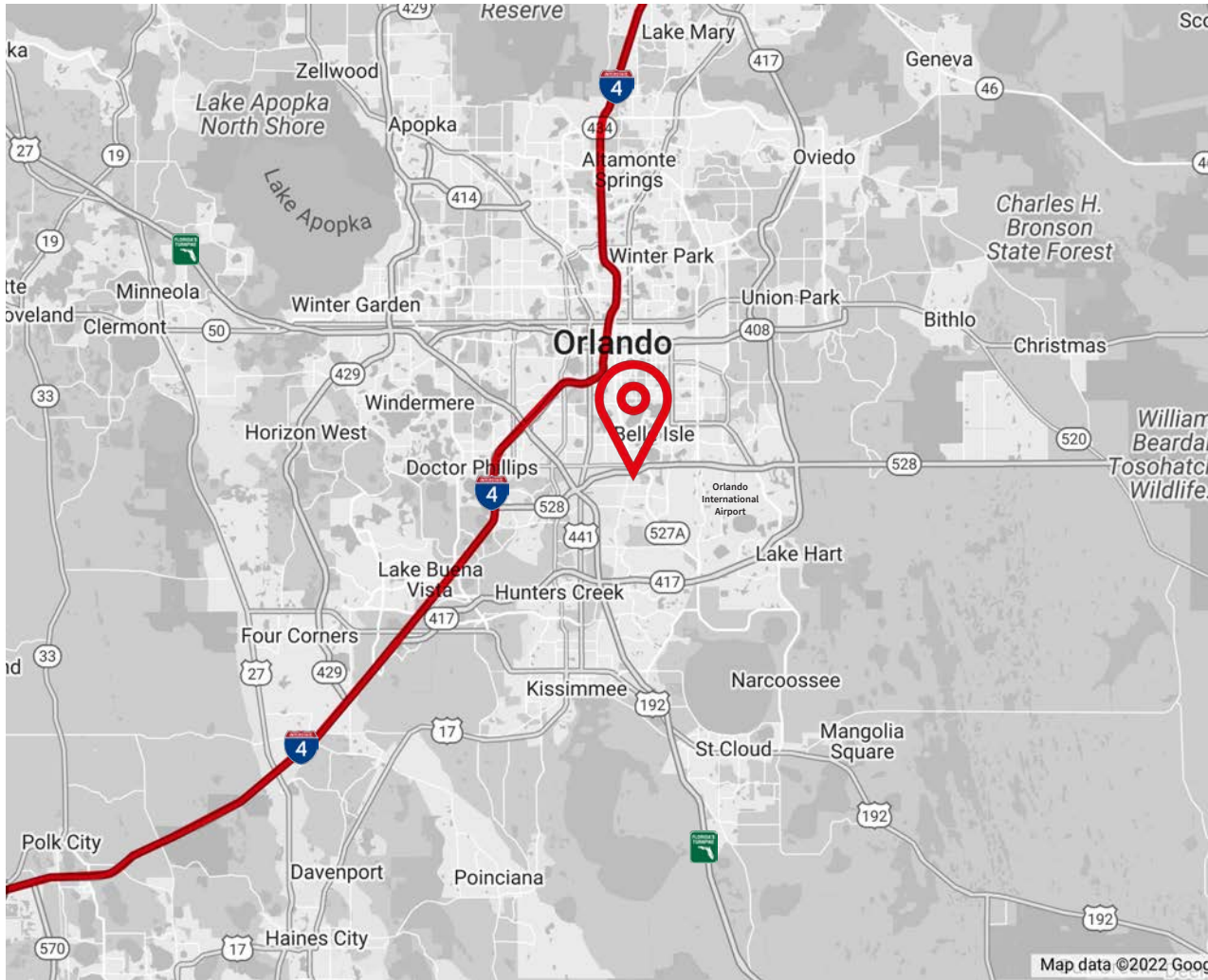
Property specifications and access

| | |
|-----------------|--|
| Total available | 22.92 acres (9.49 acres and 13.43 acres) |
| Site sizes | 11.6 acres 15.9 acres |
| Zoning | I-2/I-3, Orange Co. |
| Property use | 9100 - Private Utility |
| Features | <ul style="list-style-type: none">Fully fenced and pavedLightedDivisible to accomodate various tenant requirements |
| Lease rate | Please call for pricing |



Area highlights





Location highlights

- Just west of the the Orlando International Airport
- Four minutes to SR 528 (Beachline Expwy) and ten minutes to Florida's Turnpike
- Nearby points of interest include Florida Mall, Universal Orlando, Sea World theme parks, Orange County Convention Center, the International Drive tourist corridor, Walt Disney World parks and resorts, Old Town, and Lake Nona, including Lake Nona Medical City
- 3.6 million people within a one hour drive

Contact

Bobby Isola, SIOR, CCIM
Executive Managing Director
+1 407 930 1804
bobby.isola@jll.com

Matt Sullivan, SIOR, CCIM
Executive Managing Director
+1 407 930 1802
matt.sullivan@jll.com

Cameron Montgomery
Senior Associate
+1 407 982 8650
cameron.montgomery@jll.com



Although information has been obtained from sources deemed reliable, JLL does not make any guarantees, warranties or representations, express or implied, as to the completeness or accuracy as to the information contained herein. Any projections, opinions, assumptions or estimates used are for example only. There may be differences between projected and actual results, and those differences may be material. JLL does not accept any liability for any loss or damage suffered by any party resulting from reliance on this information. If the recipient of this information has signed a confidentiality agreement with JLL regarding this matter, this information is subject to the terms of that agreement. ©2024. Jones Lang LaSalle Brokerage, Inc. All rights reserved.

Jones Lang LaSalle Brokerage, Inc., a licensed real estate broker across the US | 250 South Orange Avenue, Suite 700P, Orlando, FL 32801