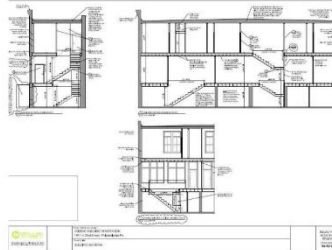


FOR SALE

1901 N 23RD ST | STANTON

LIST PRICE: \$199,000



Details:

- Building Characteristics: 2,850 SQ FT
- Lot Characteristics: 1,444 SQ FT
- Lot Dimension: 19 X 75
- Zoning: CMX1
- Annual Tax: \$1,114
- View 3D Tour [Here](#)
- View Listing [Here](#)

Features:

- Prime Investment Opportunity in the Growing Brewerytown/Strawberry Mansion Area
- Zoned For 5 Units: (2) Commercial Spaces & (3) Residential Apartments
- 2-Story Corner Property – 2,850 Sq/Ft
- Full Rehab Needed – Shell Condition
- Blueprints & Zoning Approval Available
- High Cash Flow Or Fix-And-Flip Potential

Presented by MARIA QUATTRONE



RE/MAX @ HOME

Maria Quattrone & Associates

2054 South Street, Philadelphia, PA 19146

Office: 215.607.3535

Call or Text: 215.607.3524

thelistingteam@liveloveathome.com

www.mqrealestate.com

