

# Foundation Park Phase III Vacant Commercial Lot

2641 Fruitville Rd, Sarasota, FL 34237

Land For  
Sale



## Property Description

.6 Acre site permitted for an additional office building consisting of 13,500 sf of space. Foundation Park is located on 4 acres within the City of Sarasota with a zoning designation of Office Regional District. Currently there are 3 buildings completed in the Park with over 45,000 sf of Office space.

Foundation Park is located just 1 mile from Downtown Sarasota.

## OFFERING SUMMARY

Sale Price:	\$1,500,000
Lot Size:	26,282 SF

DEMOGRAPHICS	1 MILE	3 MILES	5 MILES
Total Households	5,893	40,331	80,981
Total Population	13,604	88,638	176,896
Average HH Income	\$83,314	\$93,633	\$100,431



## Loyd Robbins

Principal Broker  
(941)-356-9659  
loyd@rerobbins.com



3580 S. Tuttle Ave  
Sarasota FL 34239

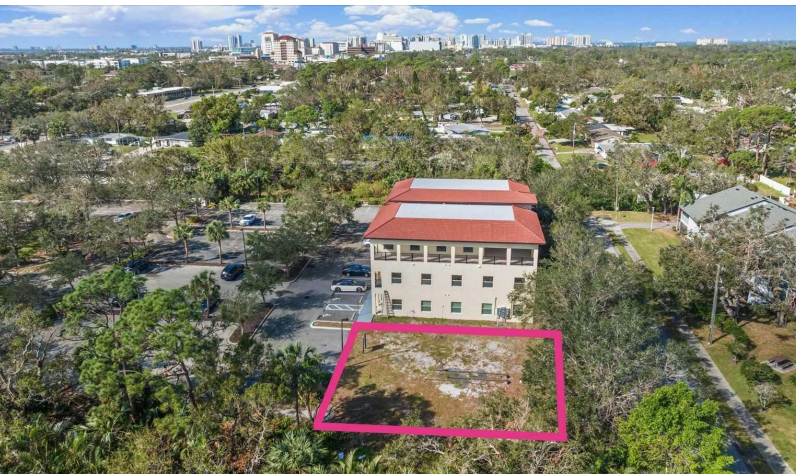
[www.rerobbins.com](http://www.rerobbins.com)



# Imagine Your New Office Here

2641 Fruitville Rd, Sarasota, FL 34237

Land For Sale



**Loyd Robbins**  
Principal Broker  
(941)-356-9659  
loyd@rerobbins.com



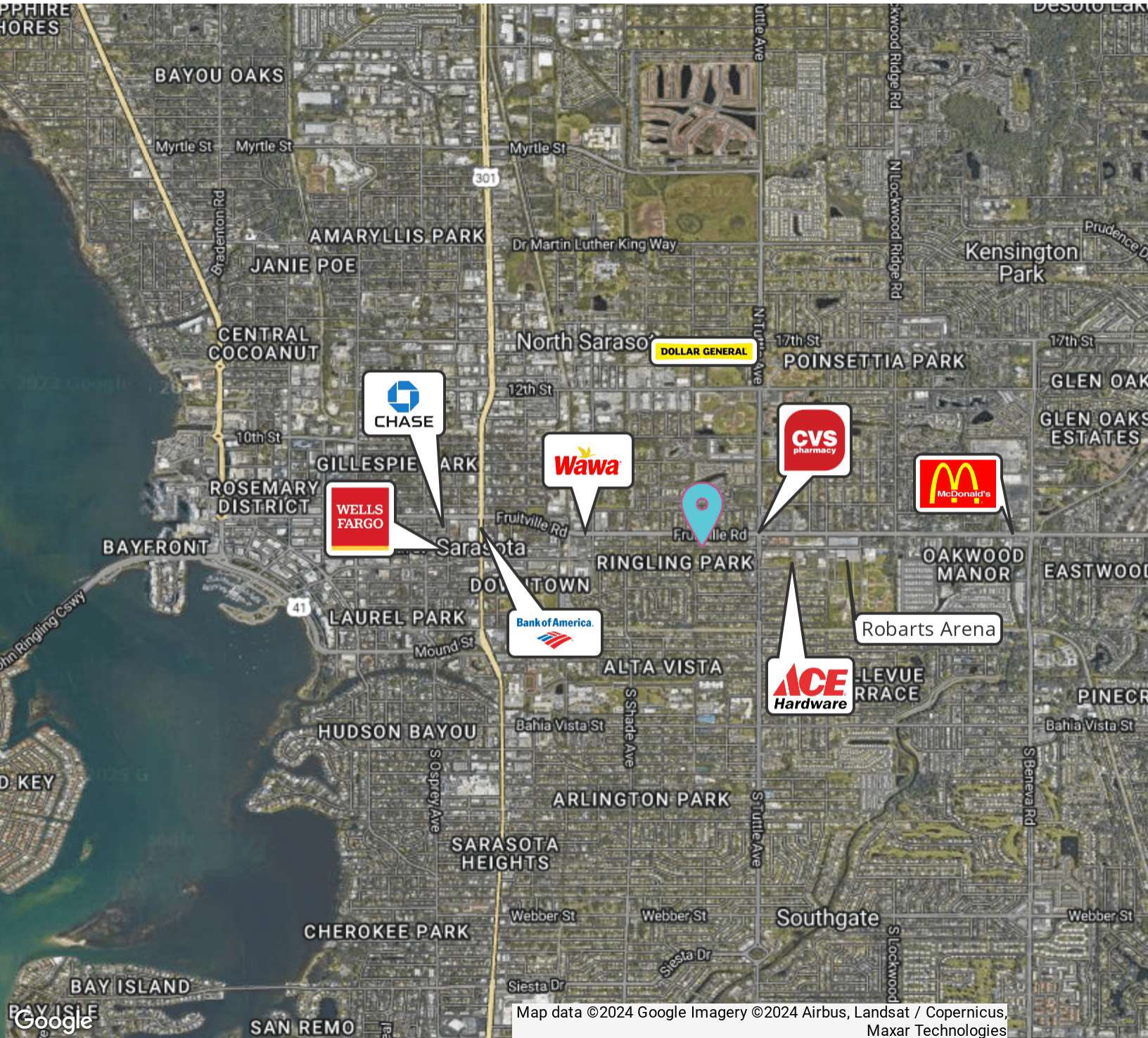
3580 S. Tuttle Ave  
Sarasota FL 34239  
[www.rerobbins.com](http://www.rerobbins.com)



# Only 1 Mile From Downtown Sarasota

2641 Fruitville Rd, Sarasota, FL 34237

Land For  
Sale



Map data ©2024 Google Imagery ©2024 Airbus, Landsat / Copernicus, Maxar Technologies



**Loyd Robbins**

Principal Broker  
(941)-356-9659  
loyd@rerobbins.com



3580 S. Tuttle Ave  
Sarasota FL 34239

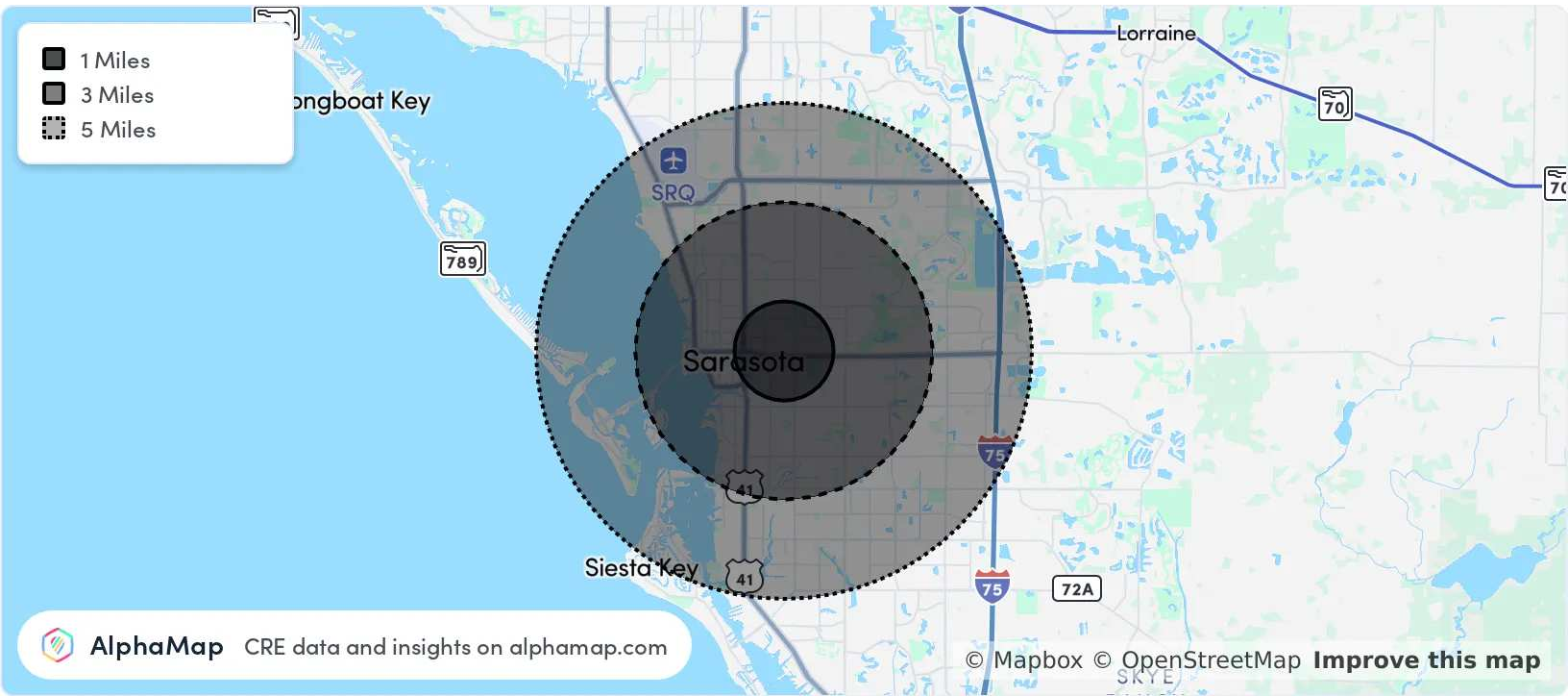
[www.rerobbins.com](http://www.rerobbins.com)



# Rapidly Growing Market

Land For Sale

2641 Fruitville Rd, Sarasota, FL 34237



## POPULATION

	1 MILE	3 MILES	5 MILES
Total Population	13,604	88,638	176,896
Average Age	45	49	50
Average Age (Male)	43	47	48
Average Age (Female)	46	50	51

## HOUSEHOLD & INCOME

	1 MILE	3 MILES	5 MILES
Total Households	5,893	40,331	80,981
Persons per HH	2.3	2.2	2.2
Average HH Income	\$83,314	\$93,633	\$100,431
Average House Value	\$445,700	\$468,994	\$490,444
Per Capita Income	\$36,223	\$42,560	\$45,650

Map and demographics data derived from AlphaMap



**Loyd Robbins**

Principal Broker  
 (941)-356-9659  
 loyd@rerobbins.com



3580 S. Tuttle Ave  
 Sarasota FL 34239

[www.rerobbins.com](http://www.rerobbins.com)