



# 762 Keele Street

BRIARWOOD CORPORATE CENTRE

UP TO 46,383 SQ. FT.  
**OFFICE**  
FOR LEASE / SALE

EASY ACCESS TO HIGHWAY 7, 407 ETR & 400 SERIES HIGHWAYS

SURFACE & UNDERGROUND PARKING AVAILABLE

SUITES RANGING FROM 384 SQ. FT. TO 15,879 SQ. FT.

EXCELLENT TRANSIT WITH ACCESS TO YRT BUS TO TTC SUBWAY

For further information, please contact:

F

**FAUSTO SAPONARA, BROKER OF RECORD**  
416-684-7222 [transactrealty@gmail.com](mailto:transactrealty@gmail.com)

# 7625 Keele Street

BRIARWOOD CORPORATE CENTRE

UP TO 46,383 SQ. FT.

**OFFICE CONDOS**

FOR LEASE / SALE

Brand-new 4-storey office condominium with suites ranging from 384 to 15,879 square feet.

# 7625 Keele Street



**BUILDING**

GOOD CORPORATE CENTRE

**LEASE DETAILS**



# 7625 Keele Street

## BRIARWOOD CORPORATE CENTRE

<b>AVAILABILITY</b>	<b>UNITS FOR LEASE</b>
	Suite 101: 900 sq. ft. Sold Suite 102: 460 sq. ft. Sold Suite 201: 3,007 sq. ft. Suite 202 2,203 sq. ft. Sold Suite 203 2,961 sq. ft. Sold Suite 204 2,416 sq. ft. Suite 205 2,689 sq. ft. Suite 206 2,604 sq. ft.  Suite 301: 3,007 sq. ft. Suite 302: 2,203 sq. ft. } 15,879 sq. ft. Suite 303: 2,961 sq. ft. Suite 304: 2,416 sq. ft. Suite 305: 2,689 sq. ft. Suite 306: 2,604 sq. ft.
<b>RENTAL RATE<sup>1</sup></b>	\$22.00 net per sq. ft. per annum (years 1-5) \$28.00 net per sq. ft. per annum (years 6-10)
<b>T.M.I.</b>	\$9.50 per sq. ft. per annum (2021 estimate)
<b>PARKING</b>	± 3 per 1,000 sq. ft. leased/purchased
<b>AVAILABLE</b>	Spring of 2026

<sup>1</sup>Rental Rate

FAUSTO SAPONARA, BROKER OF RECORD

416-684-7222

UP TO 46,383 SQ. FT.

\*Sales

Representative

# 7625 Keele Street

WOOD CORPORATE CENTRE

**OFFICE CONDOS**  
FOR LEASE / SALE

## SALE DETAILS

### AVAILABILITY

Suite 101: 900 sq. ft. Sold  
Suite 102: 460 sq. ft. Sold

Suite 201: 3,007 sq. ft.  
Suite 202 2,203 sq. ft. Sold  
Suite 203 2,961 sq. ft. Sold  
Suite 204 2,416 sq. ft.  
Suite 205 2,689 sq. ft.  
Suite 206 2,604 sq. ft. Suite  
Suite 301: 3,007 sq. ft.

Suite 302: 2,203 sq. ft.  
Suite 303: 2,961 sq. ft. } 15,879 sq. ft.  
Suite 304: 2,416 sq. ft.  
Suite 305: 2,689 sq. ft.  
Suite 306: 2,604 sq. ft.

Suite 401: 2,892 sq. ft. Sold  
Suite 402: 1,896 sq. ft. Sold  
Suite 403: 1,930 sq. ft. Sold  
Suite 404 : 2,122 sq. ft. Sold  
Suite 405: 1,900 sq. ft. Sold  
Suite 406: 2,605 sq. ft. Sold

### SALE PRICE<sup>2</sup>

\$609 to \$679 per sq. ft. Gross Area

### CONDO FEES

\$9.50 per sq. ft. per annum (2021 estimate)

### PARKING

Cost of underground parking stalls are in addition to the sale price. Speak to listing agent for details.

7615 KEELE ST

# 7625 Keele Street

BRIARWOOD CORPORATE CENTRE

**AVAILABLE**

Spring 2026

*<sup>2</sup>Units are in shell condition with HVAC, washroom and kitchen rough in and demising walls. Pricing subject to change without notice.*

displayed on this document are the property of their respective owners. All Rights Reserved. Mapping Sources: Canadian Mapping Services canadamapping@cbre.com, MapPoint, DMTI Spatial, Environics Analytics, Microsoft Bing, Google Earth



FAUSTO SAPONARA, BROKER OF RECORD  
416-684-7222



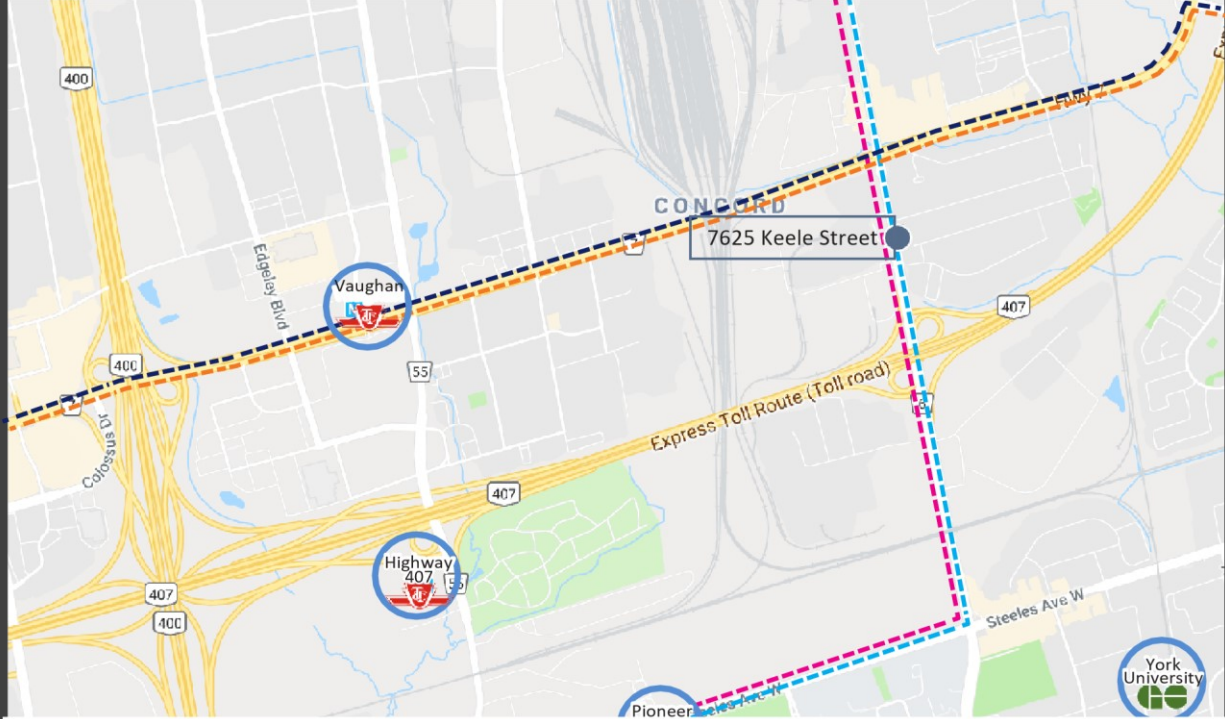
UP TO 46,383 SQ. FT.  
**OFFICE CONDOS**  
FOR LEASE / SALE



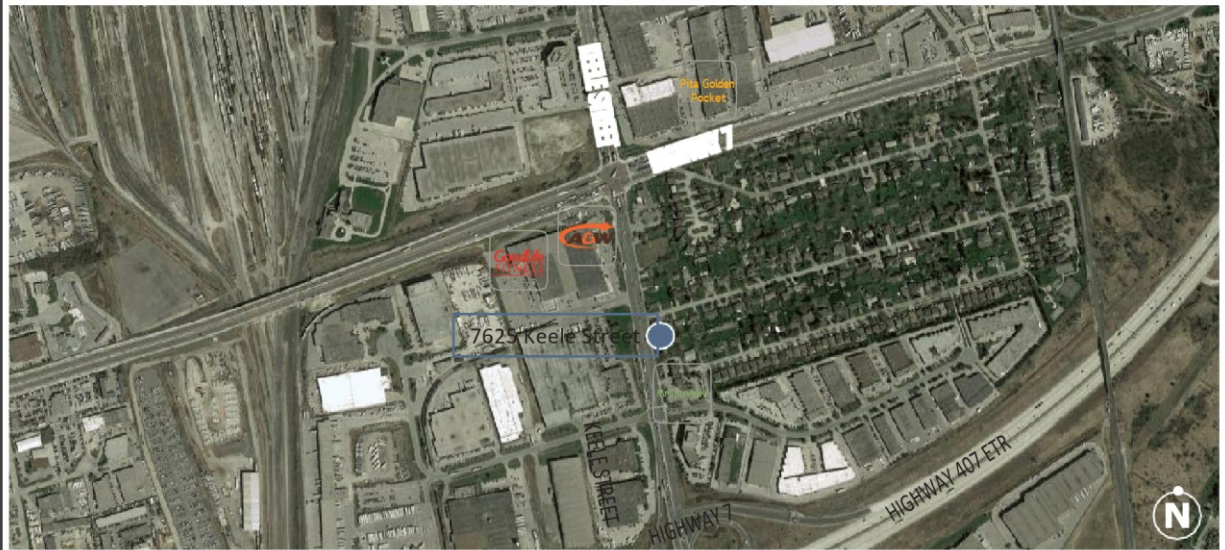
# 7625 Keele Street

BRIARWOOD CORPORATE CENTRE

TRANSIT MAP



amenities MAP



FAUSTO SAPONARA, BROKER OF RECORD  
FAUSTO SAPONARA, BROKER OF RECORD  
416-684-7222



# 7625 Keele Street

BRIARWOOD CORPORATE CENTRE

UP TO 46,383 SQ. FT.

**OFFICE SPACE**

FOR LEASE / SALE

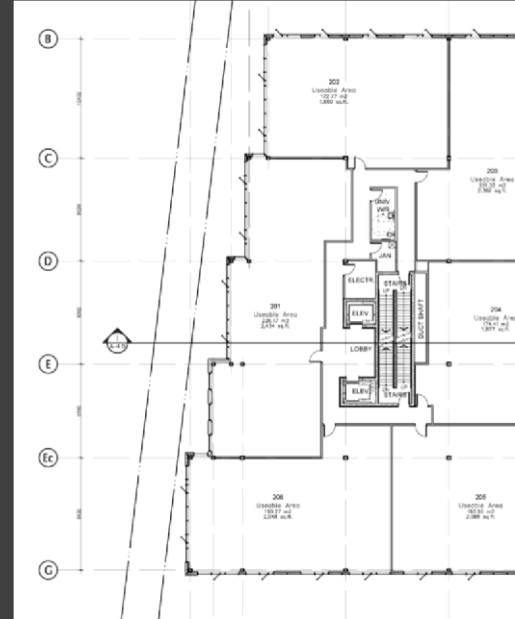
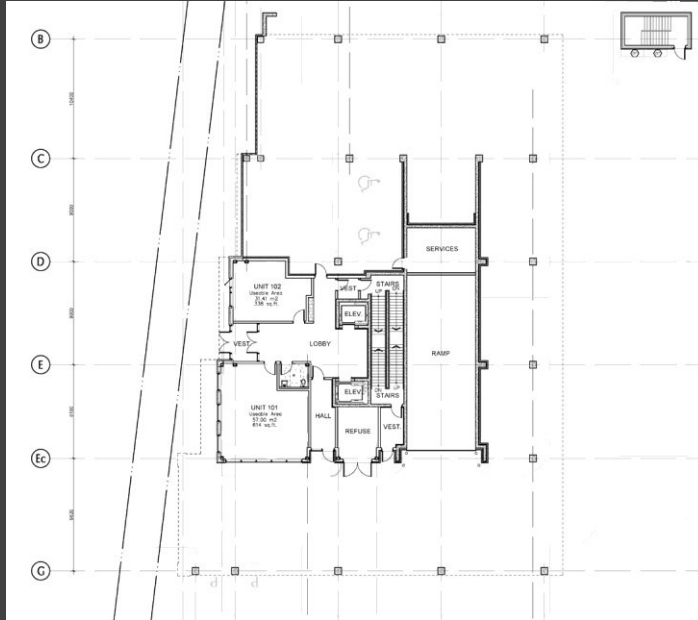
GROUND FLOOR PLAN SECOND FLOOR  
PLAN



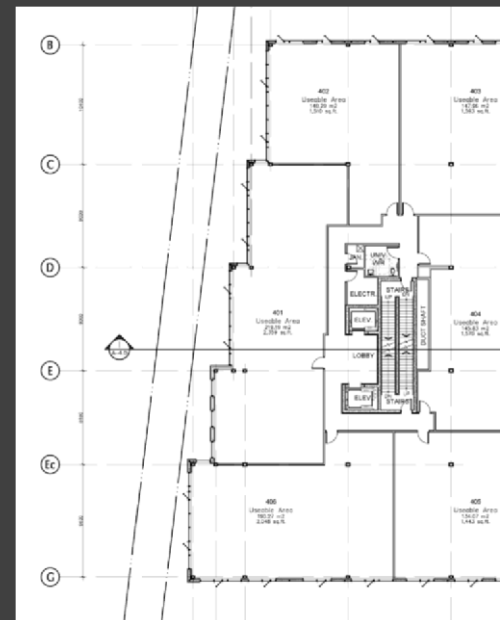
# 7625 Keele Street

BRIARWOOD CORPORATE CENTRE

THIRD



FLOOR PLAN FOURTH  
FLOOR PLAN



# 7625 Keele Street

## BRIARWOOD CORPORATE CENTRE

