



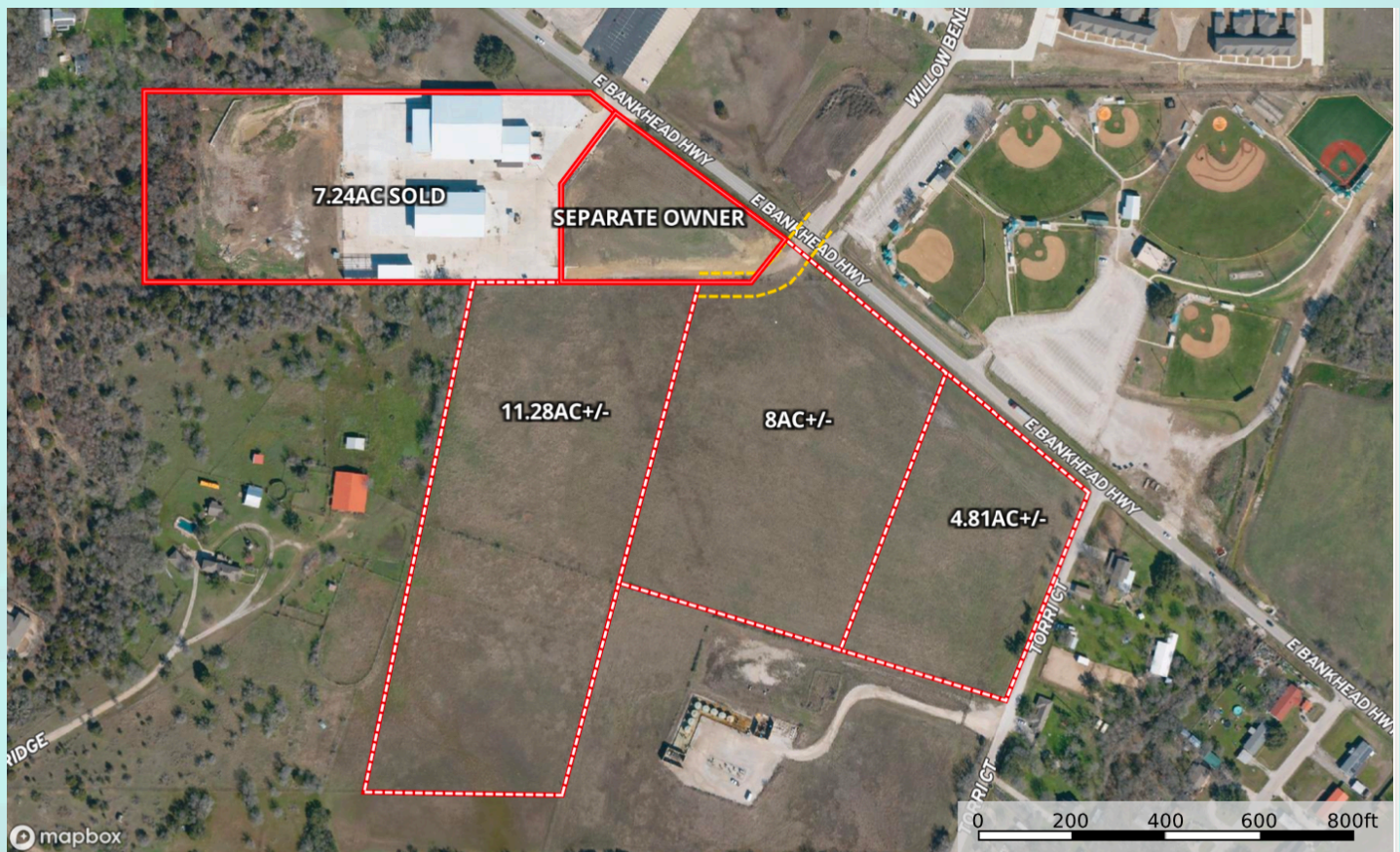
LYNCH LEGACY
COMMERCIAL

BANKHEAD HWY

Aledo, TX 76008

24 ACRES

FOR SALE



- 24.365-ACRE
- WILL SUBDIVIDE



STACY LYNCH
817.908.9567
stacy@lynchlegacyexp.com



STEPHANIE RICH
817.304.5939
stephanie@lynchlegacyexp.com



LYNCH LEGACY

COMMERCIAL

E BANKHEAD HWY

Aledo, TX 76008

24AC INVESTMENT PROPERTY

PROPERTY INFORMATION

This expansive 24.365-acre parcel, nestled within one of the nations most rapidly growing counties. Easy accessibility to I-20.

A flat terrain and ample frontage provides a perfect landscape for development. Owner will subdivide.

The property is located within the Extra-Territorial Jurisdiction (ETJ) of Willow Park, the possibilities are boundless. Whether tapping into municipal utilities or opting for county autonomy, the choice is yours to shape the infrastructure to suit your vision. Surrounded by condominiums, dining establishments, corporate hubs, and retail emporiums, this locale is primed for exponential growth. The opportunities are endless for multi-family dwellings, industrial enterprises, retail establishments, and large-scale supply chains. Stake your claim in Parker County today.

24.365 Acres out of the James OXER Survey, Abstract. No. 1029 SEE SURVEY

LOCATION: E Bankhead HWY, Aledo TX 76008

UTILITIES: City Sewer, City Water Available

exp
REALTY

STACY LYNCH

817.908.9567

stacy@lynchlegacyexp.com



STEPHANIE RICH

817.304.5939

stephanie@lynchlegacyexp.com



LYNCH LEGACY
COMMERCIAL

E BANKHEAD HWY

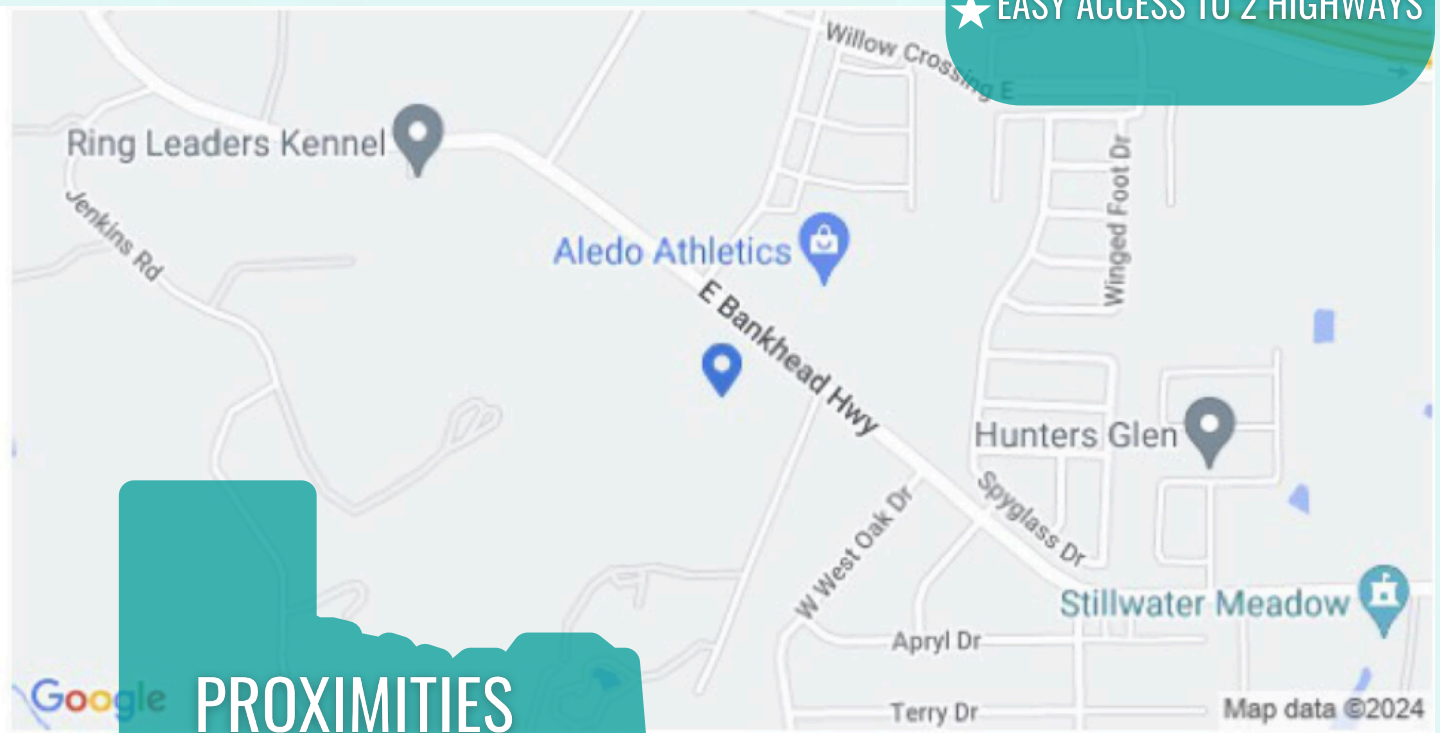
Aledo, TX 76008

24AC INVESTMENT PROPERTY

PROPERTY LOCATION



- ★ HIGH VISIBILITY
- ★ EASY ACCESS TO 2 HIGHWAYS



PROXIMITIES

- ★ 10 Minutes to Weatherford
- ★ 15 Minutes to Fort Worth
- ★ 25 Minutes to Alliance
- ★ 35 Minutes to DFW Airport



STACY LYNCH
817.908.9567
stacy@lynchlegacyexp.com



STEPHANIE RICH
817.304.5939
stephanie@lynchlegacyexp.com



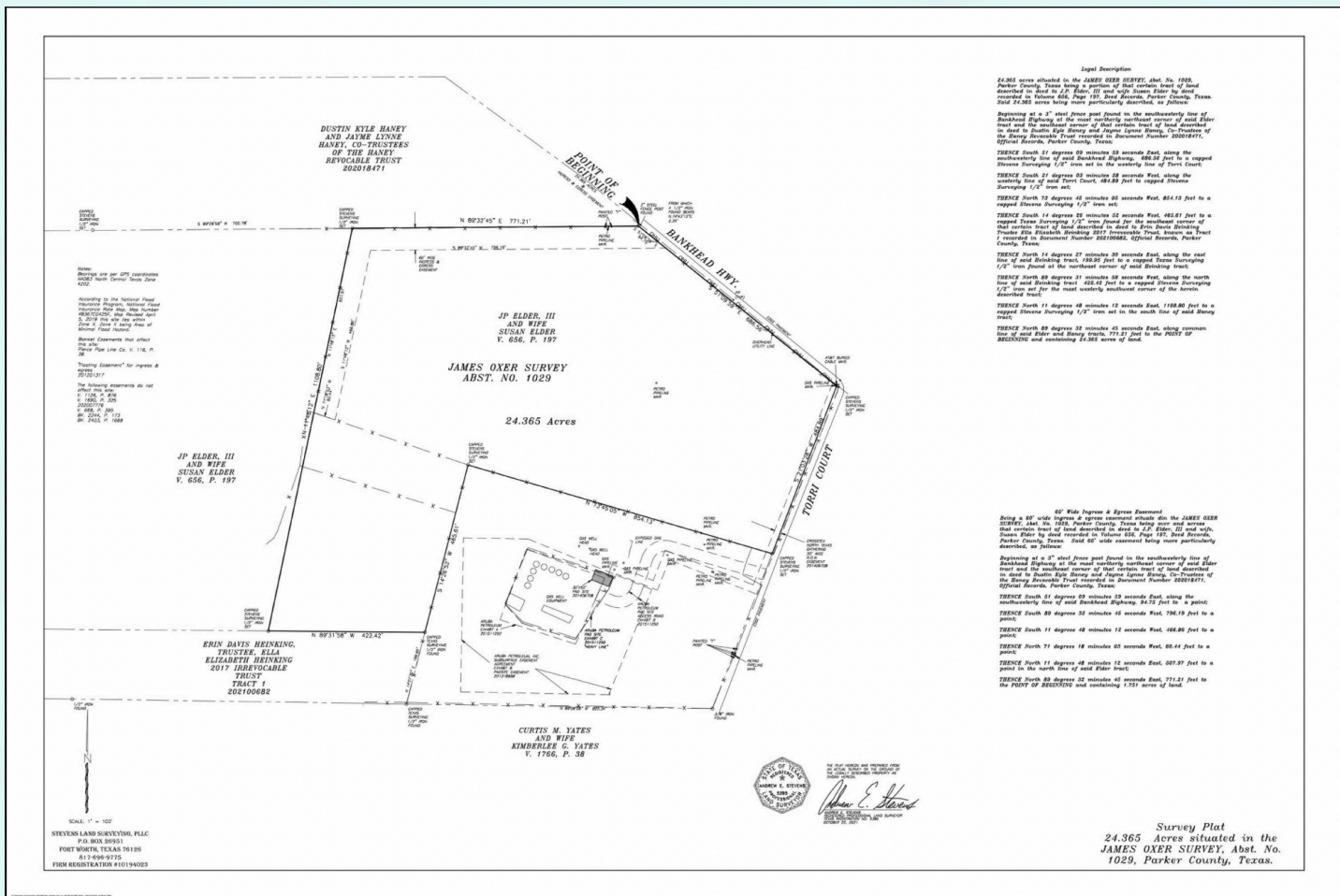
LYNCH LEGACY
COMMERCIAL

E BANKHEAD HWY

Aledo, TX 76008

24AC INVESTMENT PROPERTY

SURVEY



STACY LYNCH
817.908.9567
stacy@lynchlegacyexp.com



STEPHANIE RICH
817.304.5939
stephanie@lynchlegacyexp.com





LYNCH LEGACY
COMMERCIAL

THE LEGACY COMMERCIAL TEAM



Stacy Lynch
Broker Associate
Lynch Legacy Realty Group

Stacy is a professional broker with 40 years of experience leading our team. A resident of Parker County for 50+ years and proud Aledo High School graduate, she has a true passion for this area. Stacy is rooted in relationships, both professional and personal. Her knowledge of Parker County and the school districts in the area stems from her history with her family's 50+ year old Parker County Real Estate Company. Stacy's parents Roy and Jan Lynch started the company in 1972.

Stacy proudly serves as the Chairman of Board on the East Parker County Economic Development Committee and also the Branch to Hope Community Center.



Stephanie Rich
REALTOR®
Lynch Legacy Realty Group

Stephanie is an adventurous, fun-loving soul. Her dedication and commitment, paired with her down to earth personality, make her perfect for our team here at Lynch Legacy. She hails from the "Sooner State" up north of here, but she found her place right here in Parker County as quick as she could.

In her spare time she is obviously a big Oklahoma Sooners fan and loves catching a game when the opportunity presents itself. Her hobbies include shopping, cooking, and spending as much time by the lake as the weather allows. Her favorite thing about Parker County? "The people here- their pride in community, family and country" .

EXPERTISE IN EVERY BRANCH

We Live Here, Work Here, Play Here.



STACY LYNCH
817.908.9567
stacy@lynchlegacyexp.com



STEPHANIE RICH
817.304.5939
stephanie@lynchlegacyexp.com