

MEDICAL OFFICE BUILDING

**Move In
Ready!**



**Fully Improved
1,959 SF
Medical Suite Available**

L A D E R A

CORPORATE TERRACE

**800 CORPORATE DRIVE (Phase III)
CLASS "A" MEDICAL OFFICE BUILDING**

- 1,959 SF move-in ready medical suite available 2nd quarter 2019
- Private restroom in suite
- Designer upgrades
- 23,000 SF Medical Office Bldg.
- Central, Elevator Served Lobby
- 6.67:1 Free Parking
- Walking distance to Food Court
- Campus Environment
- 75 Acre Site including Health Club, Child Care, Professional Offices

LADERA RANCH



ZCA INC.
ZUVICH CORPORATE ADVISORS

LUTZKY ASSOCIATES
DEVELOPMENT, LP

For further information, please contact:

ZUVICH Corporate Advisors, Inc.

Mark Zuvich License #00983868

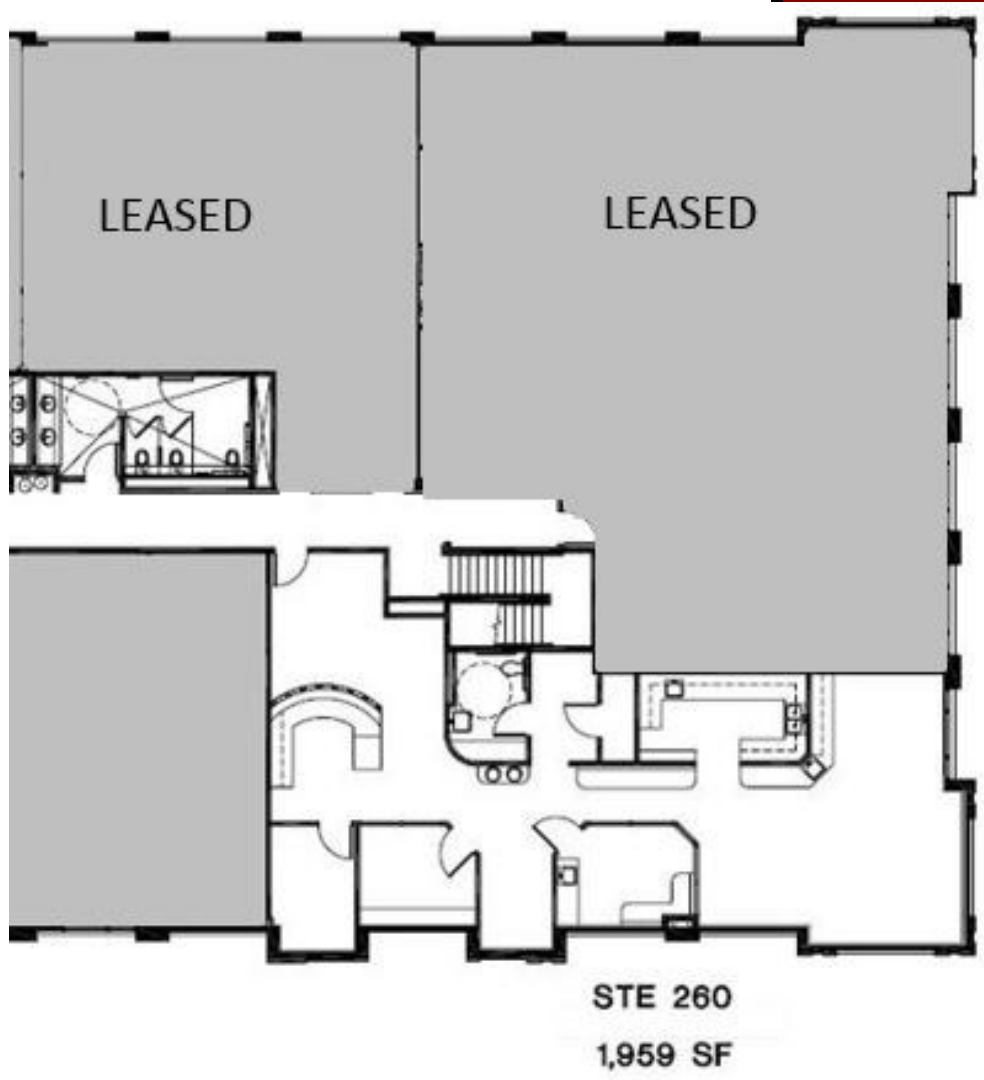
John Moody License #01277097

Trevor Sette License #02060723

Telephone (949)453-9900
551 Wald Irvine, CA 92618

No warranty or representation, expressed or implied, is made as to the accuracy of the information contained herein, and same is submitted subject to errors, omissions, change of price, rental or other conditions, withdrawal without notice, and to any special listing conditions, imposed by our principals.

LADERA RANCH



ZCA INC.
ZUVICH CORPORATE ADVISORS

For further information, please contact:
ZUVICH Corporate Advisors, Inc.
 Mark Zuvich License #00983868
 John Moody License #01277097
 Trevor Sette License #02060723
 Telephone (949)453-9900
 551 Wald Irvine, CA 92618

No warranty or representation, expressed or implied, is made as to the accuracy of the information contained herein, and same is submitted subject to errors, omissions, change of price, rental or other conditions, withdrawal without notice, and to any special listing conditions, imposed by our principals.