

2025 Meridian Street, Arlington, TX



ML REALTY
PARTNERS

NEWLY RENOVATED OFFICE



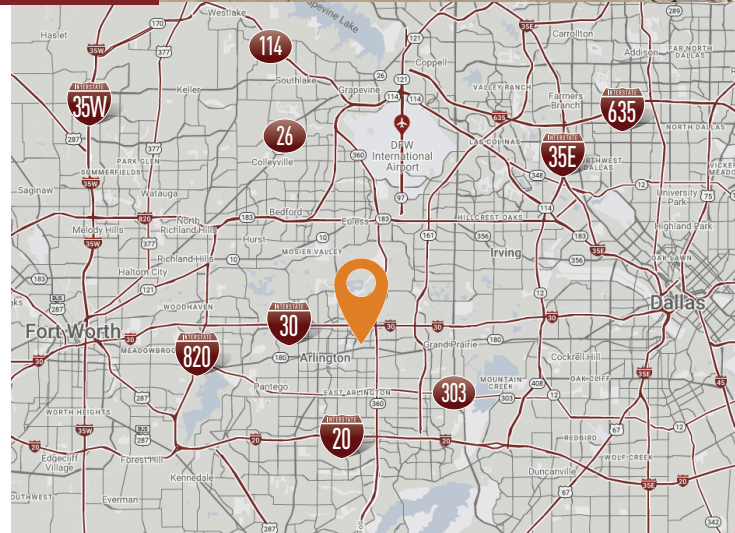
38,734 SF AVAILABLE

Building Specifications

| | |
|------------------|-----------------------------|
| Building Size: | 71,973 SF |
| Total Available: | 38,734 SF |
| Office SF: | 4,328 SF |
| Clear Height: | 22' Clear |
| Loading: | 6 Dock High Doors |
| Ramped Door: | (1) 12' X 16' Drive-In Door |
| Column Spacing: | 52' X 38' |
| Power: | 800A @ 480V |
| Sprinkler: | Wet |

Building Features

- › Easy access to major thoroughfares
- › Immediate access to TX-360 and Interstate 30
- › Located ten miles from DFW International Airport



For More Information Contact

**LEE &
ASSOCIATES**

COMMERCIAL REAL ESTATE SERVICES

MARK GRAYBILL

972-934-4007

mgraybill@lee-associates.com

REED PARKER

972-934-4020

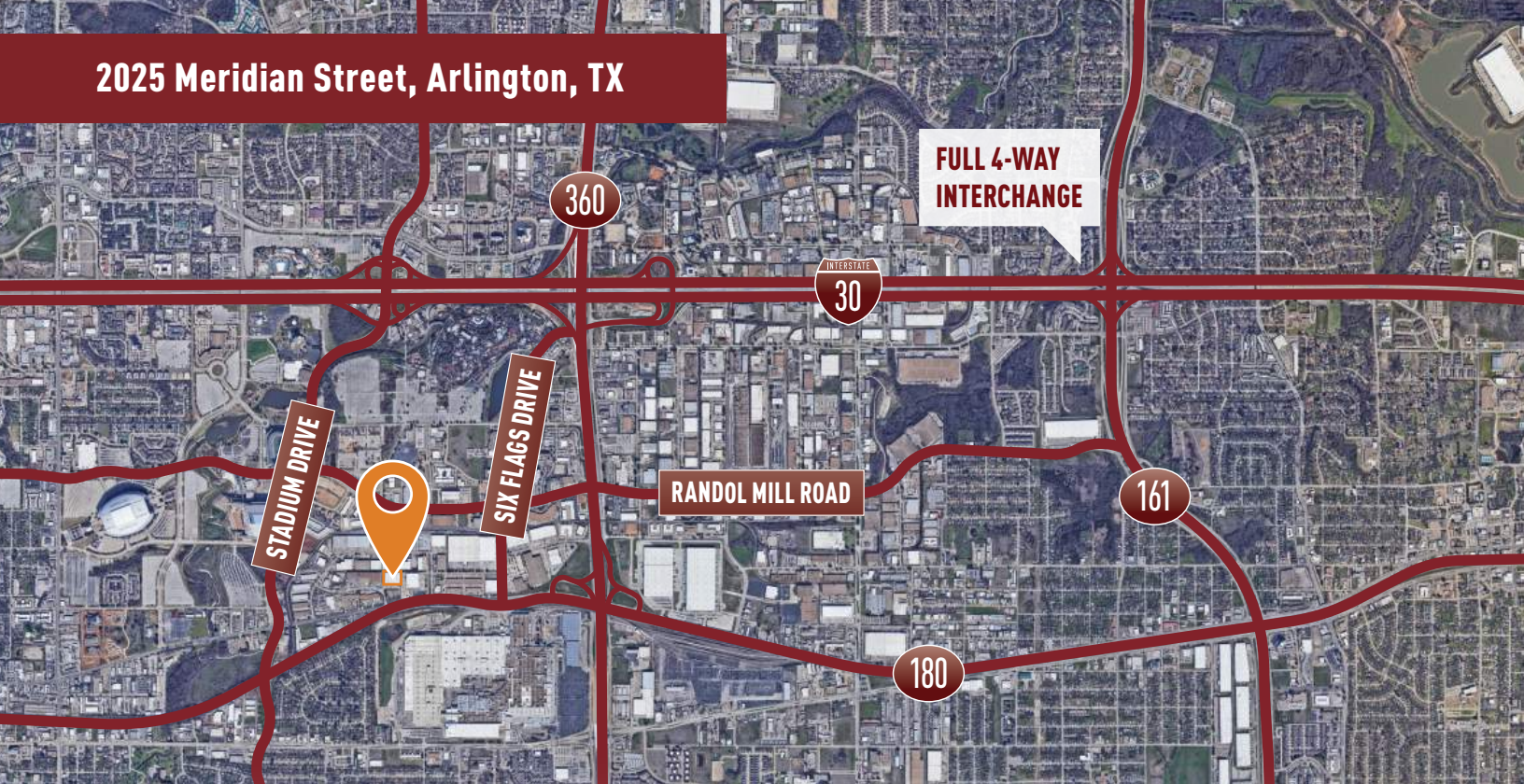
rparker@lee-associates.com

Owner:

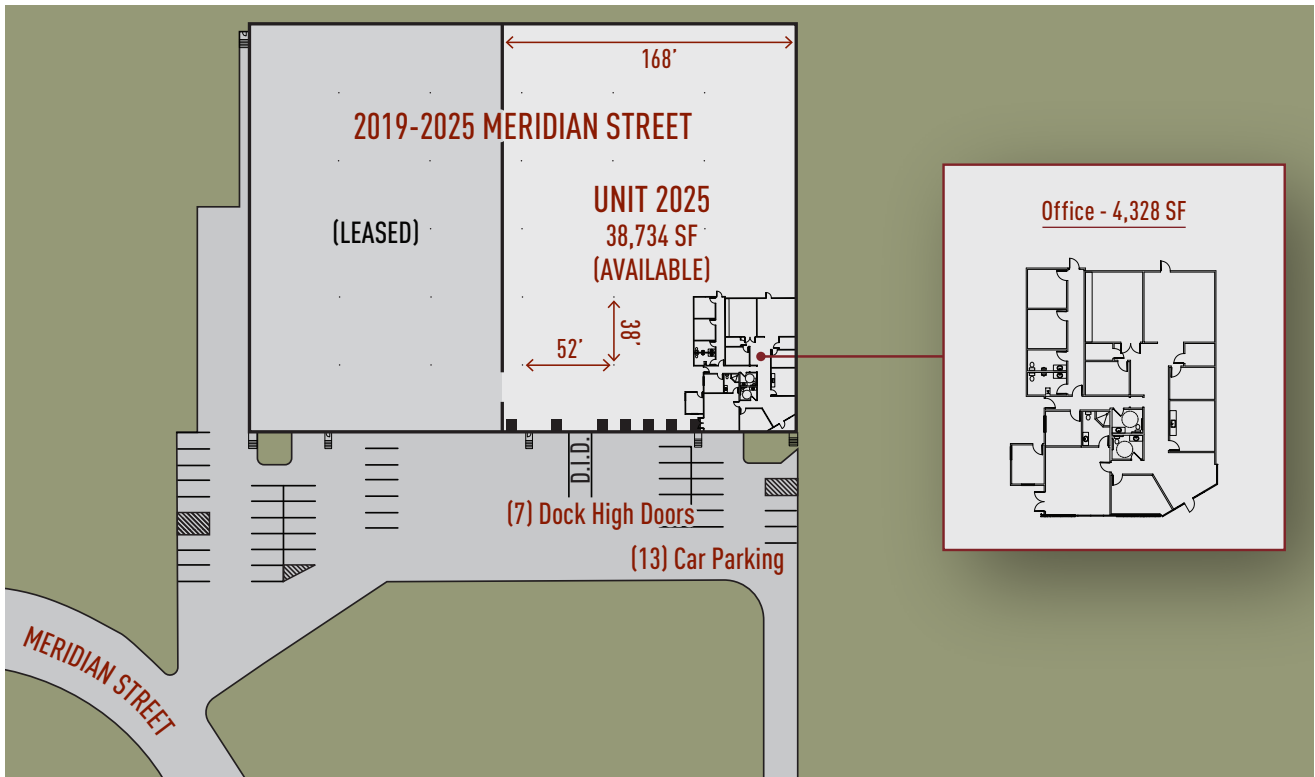
ML Realty Partners \ 8150 N Central Expy, Suite M-2140, Dallas, TX 75206 \ 214-389-1155

Information contained herein is subject to change and verification, and no liability for errors or omissions is assumed. © 2024 All Rights Reserved. ML Realty Partners

2025 Meridian Street, Arlington, TX



Master Plan Rendering



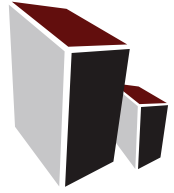
NORTH ↑

ML Realty Partners || 8150 N Central Expy, Suite M-2140, Dallas, TX 75206 || 214-389-1155

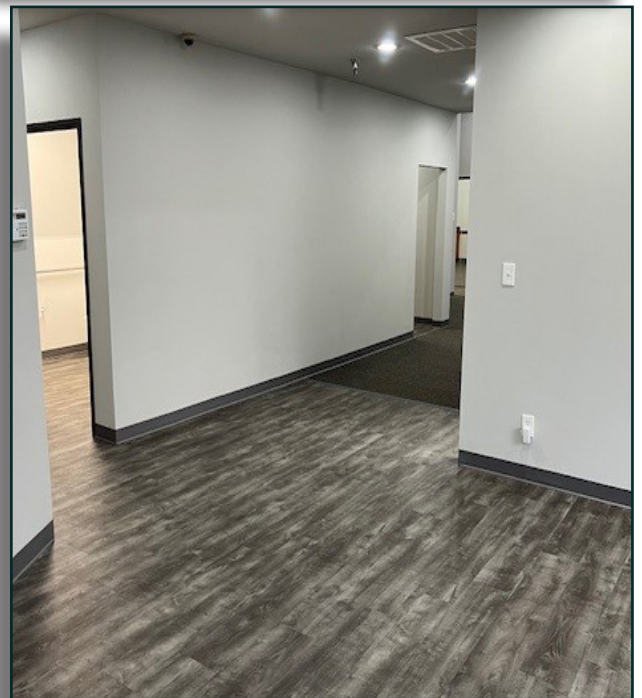
Information contained herein is subject to change and verification, and no liability for errors or omissions is assumed. © 2024 All Rights Reserved. ML Realty Partners

7300 Linder Avenue, Skokie, IL

INTERIOR RENOVATIONS



ML REALTY
PARTNERS



ML Realty Partners \ One Pierce Place, Suite 450, Itasca, Illinois 60143 \ 630-250-2900

Information contained herein is subject to change and verification, and no liability for errors or omissions is assumed. © 2024 All Rights Reserved. ML Realty Partners