

2010 Jefferson Street, Napa, CA

Office for Sublease



±1,368 SF
\$3,500/Mo. Gross

- 3-4 Offices
- Reception
- Multiple Entrances/Entry Options
- Free Standing Office
- Kitchen/work Area
- Two Restrooms
- Centrally Located
- Good On-Site Parking



Sublease Term Ends: 8/31/26
Zoning: OC (Commercial Office)

AVAILABLE FOR SUBLEASE



Cathy D'Angelo Holmes
(707) 304-3338
cholmes@cnapavalley.com
Lic.#01355085

Michael J. Moffett
(707) 479-1976
mmoffett@cnapavalley.com
Lic.#00946472



**COLDWELL BANKER
COMMERCIAL**
BROKERS
OF THE VALLEY

1775 Lincoln Ave.
Napa, CA 94558

PHOTO GALLERY



Cathy D'Angelo Holmes
(707) 304-3338
cholmes@cnapavalley.com
Lic.#01355085

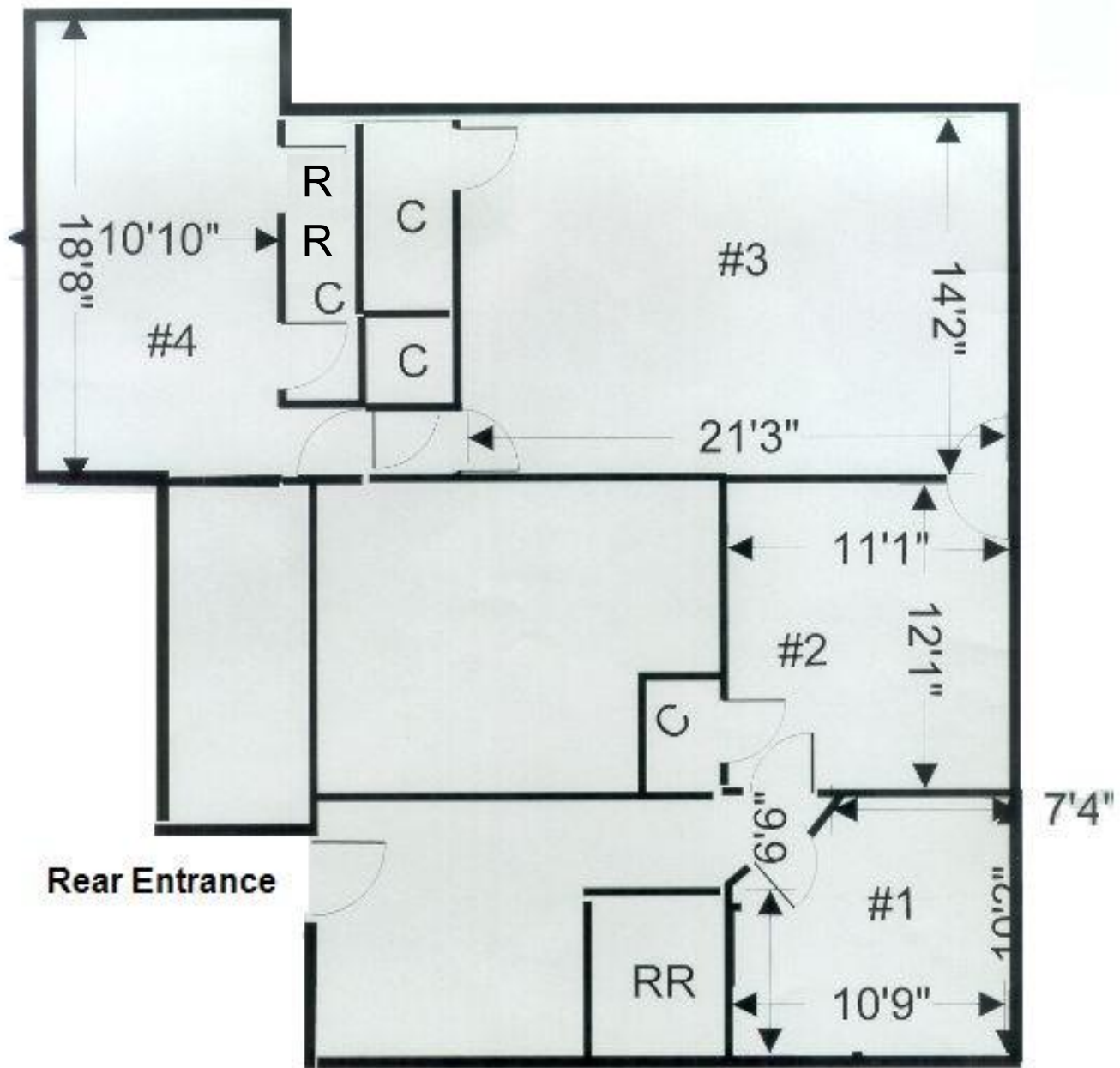
Michael J. Moffett
(707) 479-1976
mmoffett@cnapavalley.com
Lic.#00946472



**COLDWELL BANKER
COMMERCIAL**
BROKERS
OF THE VALLEY

1775 Lincoln Ave.
Napa, CA 94558

FLOOR PLAN



Cathy D'Angelo Holmes
 (707) 304-3338
cholmes@cnapavalley.com
 Lic.#01355085

Michael J. Moffett
 (707) 479-1976
mmoffett@cnapavalley.com
 Lic.#00946472



**COLDWELL BANKER
 COMMERCIAL**
 BROKERS
 OF THE VALLEY

1775 Lincoln Ave.
 Napa, CA 94558