

MEDICAL OFFICE FOR SUBLEASE

2200 W 3RD ST, LOS ANGELES, CA 90057



6,626 RSF Available for Sublease

Approximately 6,626 RSF available

Suite 120A

10 unreserved parking spaces at current monthly rate

Up to 20 car spaces for visitors at prevailing market rate

Great location/close proximity to DTLA

Asking rate is negotiable

Sublease term through April 30, 2028

Available now

PHIL PETRUSO

424.653.1851

phil.petruso@kidder.com

LIC N° 00780128

MICHAEL JONES

310.906.3272

michael.jones@kidder.com

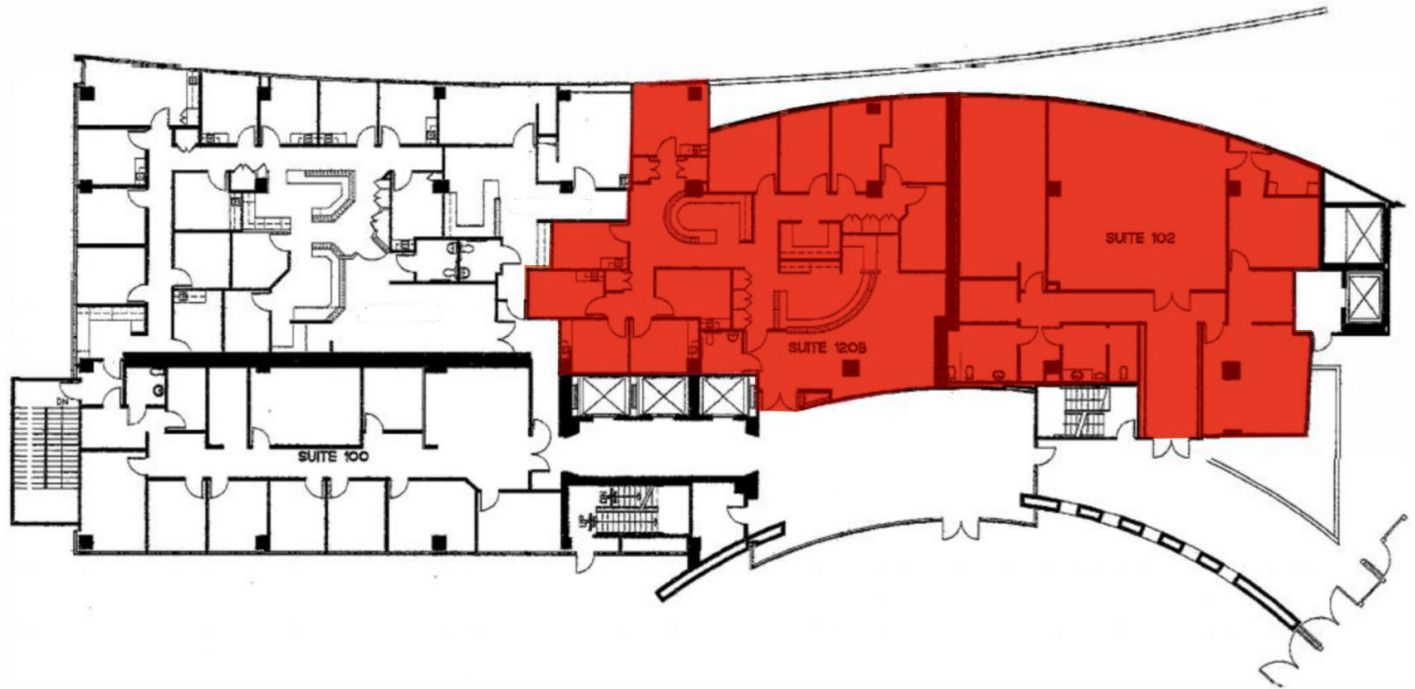
LIC N° 00986586

KIDDER.COM

This information supplied herein is from sources we deem reliable. It is provided without any representation, warranty, or guarantee, expressed or implied as to its accuracy. Prospective Buyer or Tenant should conduct an independent investigation and verification of all matters deemed to be material, including, but not limited to, statements of income and expenses. Consult your attorney, accountant, or other professional advisor.



FLOOR PLAN



6,626 RSF

AVAILABLE

PHIL PETRUSO
424.653.1851
phil.petruso@kidder.com
LIC N° 00780128

MICHAEL JONES
310.906.3272
michael.jones@kidder.com
LIC N° 00986586

KIDDER.COM

This information supplied herein is from sources we deem reliable. It is provided without any representation, warranty, or guarantee, expressed or implied as to its accuracy. Prospective Buyer or Tenant should conduct an independent investigation and verification of all matters deemed to be material, including, but not limited to, statements of income and expenses. Consult your attorney, accountant, or other professional advisor.