



636-A N. ROBERTSON BLVD.

WEST HOLLYWOOD, CA 90069

**SAM MINASIAN** | tel - 323-782-1261 | cell - 310-704-6578 | [samminasian@southparkgroup.com](mailto:samminasian@southparkgroup.com) | DRE LICENSE #01212823

## *Property Overview*

### **FOR LEASE**

**636-A  
N. ROBERTSON BLVD.  
NORTH SUITE  
*Second Floor***

### **RATE**

\$4,000 per month, Modified Gross

### **SIZE**

Approximately 962 SF + a shared outdoor patio



Located in the highly desirable section of Robertson Blvd., adjacent to the West Hollywood Park and Library. Close to high end boutiques: Maxfield Gallery, Chrome Hearts, The Abbey, Something About Her, Sur Restaurant and Lounge.

### **USES**

Office

### **AVAILABILITY**

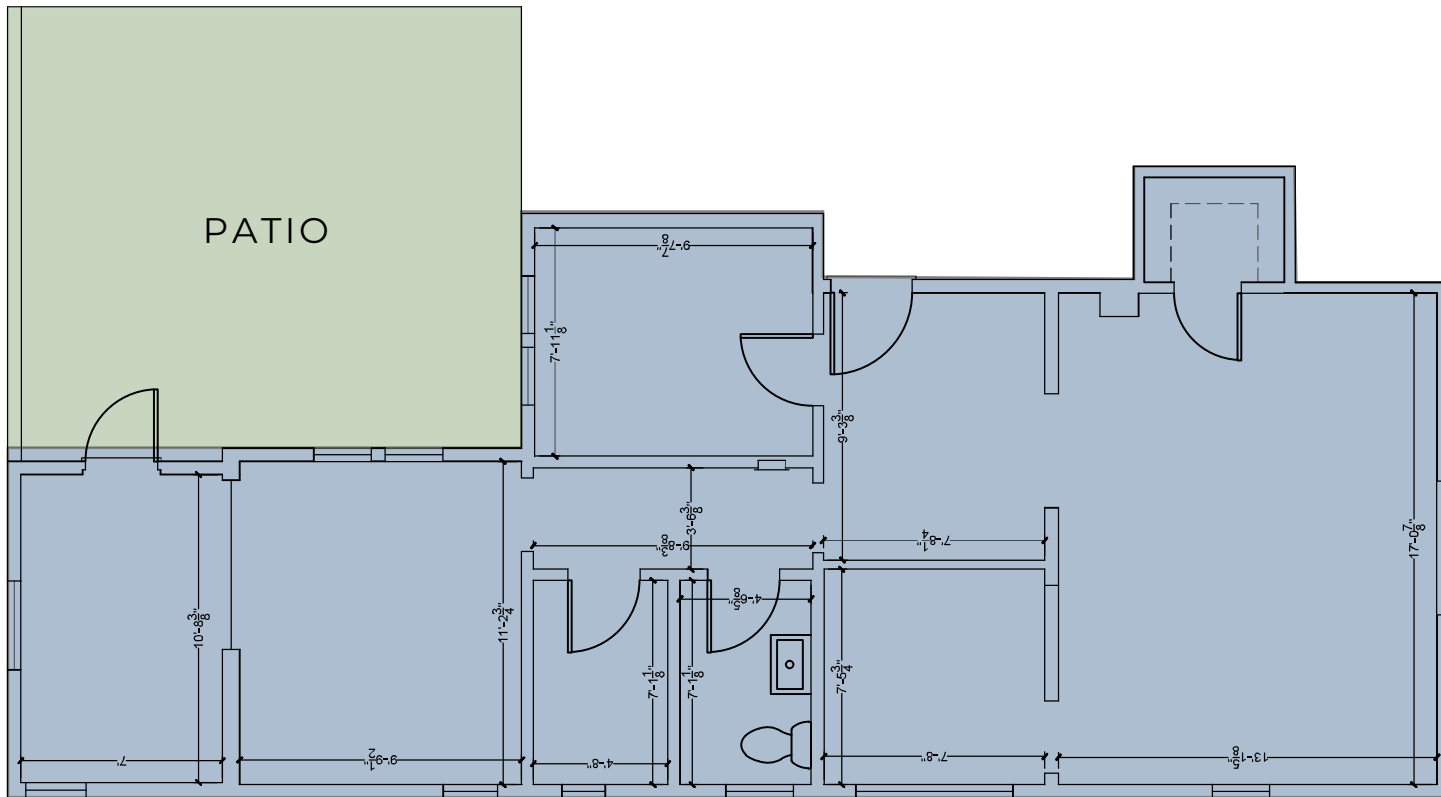
Immediately

## Floor Plan

**636-A N. ROBERTSON BLVD.**

## SECOND FLOOR

962 SF



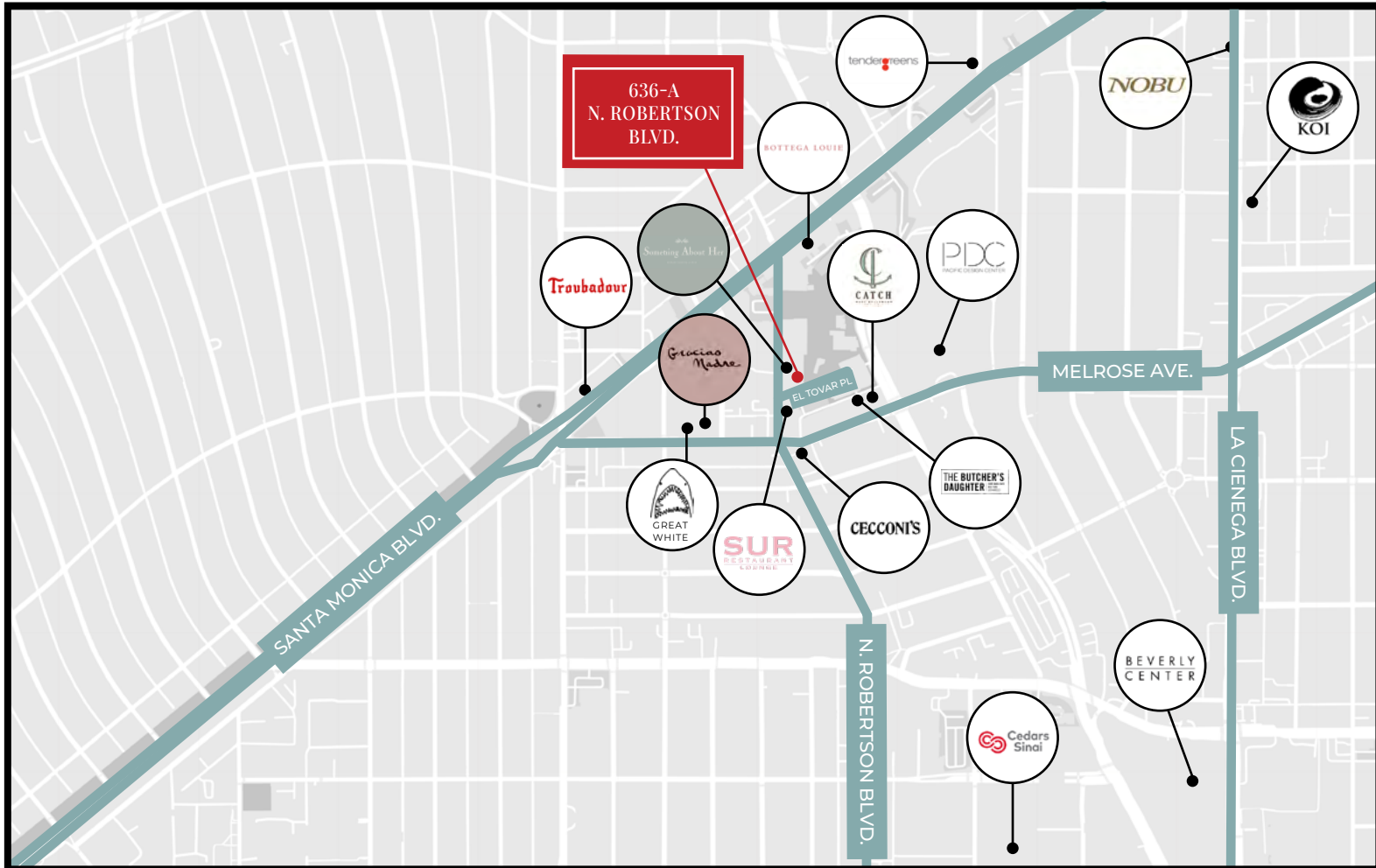


## *Interior Photos*

### **636-A N. ROBERTSON BLVD., NORTH SUITE** *Second Floor*



# Map Overview



## *Neighboring Tenants*



### **WEST HOLLYWOOD**

Located in the heart of West Hollywood along North Robertson Boulevard between Santa Monica Boulevard and Melrose Avenue. Neighboring tenants include Beverly Center, Four Seasons Hotel, The Assembly, Bottega Louie, Hauser & Wirth and more. Parking available directly behind the property in the city of West Hollywood parking structure.

## **SAM MINASIAN**

**EXECUTIVE VICE PRESIDENT**

tel - 323 - 782 - 1261

cell - 310 - 704 - 6578

samminasian@southparkgroup.com

DRE LICENSE #01212823

This information has been furnished by sources that we deem reliable, but for which we assume no liability. The information contained herein is given, in confidence, with the understanding that all negotiations pertaining to this property be handled through the submitting office. All measurements are approximate.