

NASHUA TECHNOLOGY PARK LIGHT MANUFACTURING/ASSEMBLY, DATA CENTER & OFFICE SPACE FOR LEASE: 130 - 108,748 SF



Nashua
**TECH
PARK**

100 | 200 | 300 Innovative Way | Nashua, NH

The Nashua Technology Park (NTP) campus consists of over 750,000 SF of interconnected, energy-efficient Office/R&D buildings within the Gateway Hills campus. The park and location have become a key component in the growth of numerous leading high-tech companies including Amphenol, Benchmark Electronics, Jacobs, Parallel Wireless, Degree Controls and more. Conveniently located at Exit 1 off of Route 3 (Everett Turnpike) at the MA/NH border, the site plan for Nashua Technology Park includes the potential for additional R&D space, of which 240,000 SF is currently being engineered and approved.



Amenities:

- Conveniently located at Exit 1 off Route 3 at MA/NH border
- 750,000 SF of interconnected, energy-efficient office/R&D space within the Gateway Hills community
- NTP Conference Center (250-person capacity)
- Data Center
- Auditorium (80-person capacity)
- Shared collaboration rooms
- Outdoor Amphitheater
- Gateway Hills Health Club
- Homewood Suites by Hilton Extended Stay Hotel
- Full service cafeteria
- Outdoor dining patio with lawn games
- Game Room & iCafe
- Rejuvenation station with massage chairs
- Athletic field, tennis court, pickleball court & basketball court
- Putting green
- Spyglass Brewery
- Gateway Hills Snow Park
- Electric car charging station
- Miles of paved walking/biking trails



DATA CENTER



GATEWAY HILLS HEALTH CLUB

Availabilities:

100 Innovative Way:

3rd Floor:

Suite 3330	11,257 SF*
Suite 3340	5,577 SF*
<i>*Contiguous up to 16,832 SF</i>	

4th Floor:

Suite 3415	9,893 SF*
Suite 3420	2,923 SF*
Suite 3425-A	2,918 SF*
Suite 3425-B	2,827 SF*
Suite 3425-C	3,098 SF*
Suite 3435	2,494 SF*
Suite 3470	5,570 SF*
Suite 3480	9,695 SF*
Suite 3490	14,170 SF*
<i>*Contiguous up to 53,150 SF</i>	

200 Innovative Way:

3rd Floor:

Suite 1332	8,046 SF
------------	----------

300 Innovative Way:

1st Floor:

Suite 2120	20,977 SF**
Suite 2121	9,974 SF*
Suite 2122	14,441 SF*
<i>*Contiguous up to 45,392 SF</i>	
<i>*Light manufacturing/assembly</i>	

2nd Floor:

Suite 2221	12,413 SF*
Suite 2240	4,400 SF*
Suite 2245	8,660 SF*
Suite 2250	620 SF*
Suite 2260	130 SF*
Suite 2270	797 SF*
<i>*Contiguous up to 27,020 SF</i>	

3rd Floor:

Suite 2390	8,822 SF
------------	----------



NTP CAFETERIA

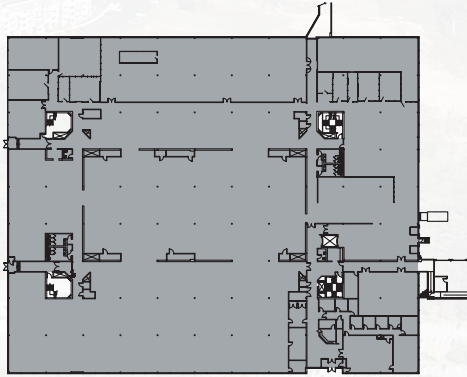


NTP CONFERENCE CENTER

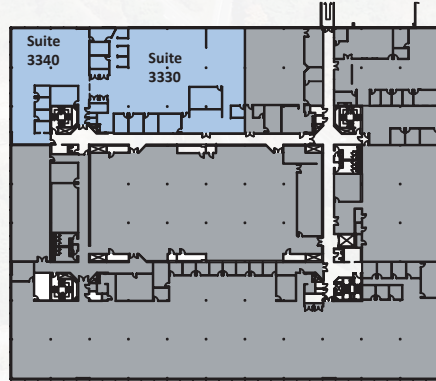
Floor Plans:

AVAILABLE
LEASED

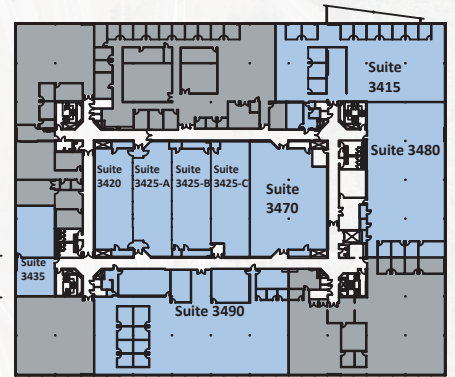
100 INNOVATIVE WAY 2ND FLOOR



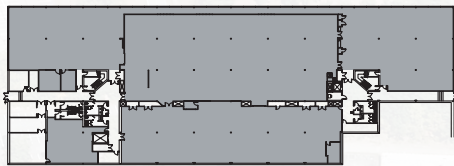
3RD FLOOR



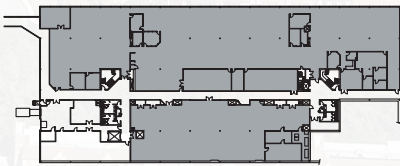
4TH FLOOR



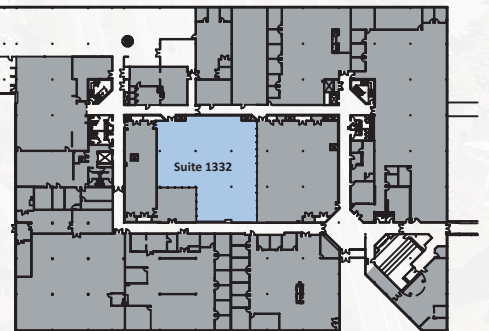
200 INNOVATIVE WAY 1ST FLOOR



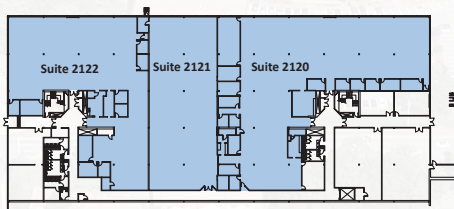
2ND FLOOR



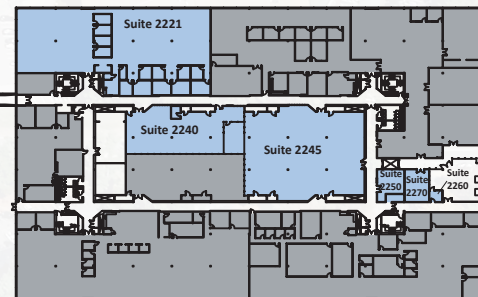
3RD FLOOR



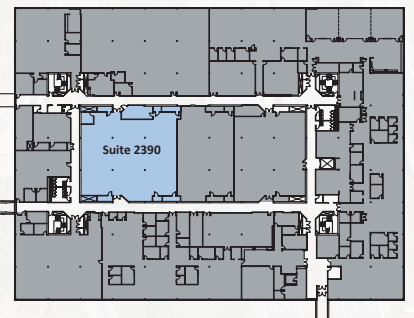
300 INNOVATIVE WAY 1ST FLOOR



2ND FLOOR



3RD FLOOR





FUTURE DEVELOPMENT

Digital Drive

EXIT 1

OFFICE / R&D DEVELOPMENT
200,000 - 250,000 SF



SNOW PARK

ATHLETIC FIELD

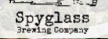


NASHUA TECHNOLOGY PARK

FLEX/R&D Site



AMPHITHEATER



Research Drive

Innovative Way



NORTHBRIDGE SURGICAL SUITES

Tara Boulevard

Nashua OFFICE PARK



EXIT 1

TARA COMMONS

Spit Brook Road

NH/MA State Line

JOHN FLATLEY
Company

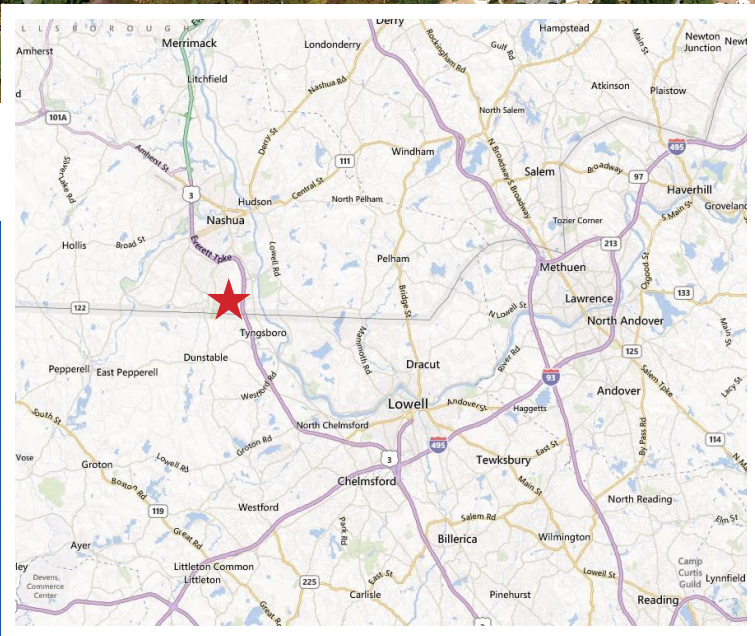
For more information,
or to schedule a tour, please contact:

Tom Maregni

Direct 781.917.5306

Office 781.380.7731

thomas.maregni@johnflatleyco.com



Corporate Headquarters | 45 Dan Rd, Suite 320, Canton, MA 02021 | 781.380.7731
www.johnflatleyco.com | info@johnflatleyco.com