

Standalone Medical Office Building

4491 W Northern Ave, Glendale, AZ 85301



- Standalone medical office building for lease
- Current dental buildout
- +/- 3,270 sq. ft.
- W Northern Ave & N 45th Ave
- +/- 26,610 VPD on Northern Ave
- 16 onsite parking spaces + 1 ADA space

www.menlocre.com/property

Ryan Edwards
480.760.5044
ryan@menlocre.com

P: 480.659.1777 • F: 480.535.5854
www.menlocre.com

Standalone Medical Office Building For Lease

4491 W Northern Ave, Glendale, AZ 85301

Additional Photos

Page 2



MENLO GROUP
480.659.1777
1809 S Holbrook Ln, Tempe, AZ 85281
menlocre.com

RYAN EDWARDS
480.760.5044
ryan@menlocre.com



Standalone Medical Office Building For Lease

4491 W Northern Ave, Glendale, AZ 85301

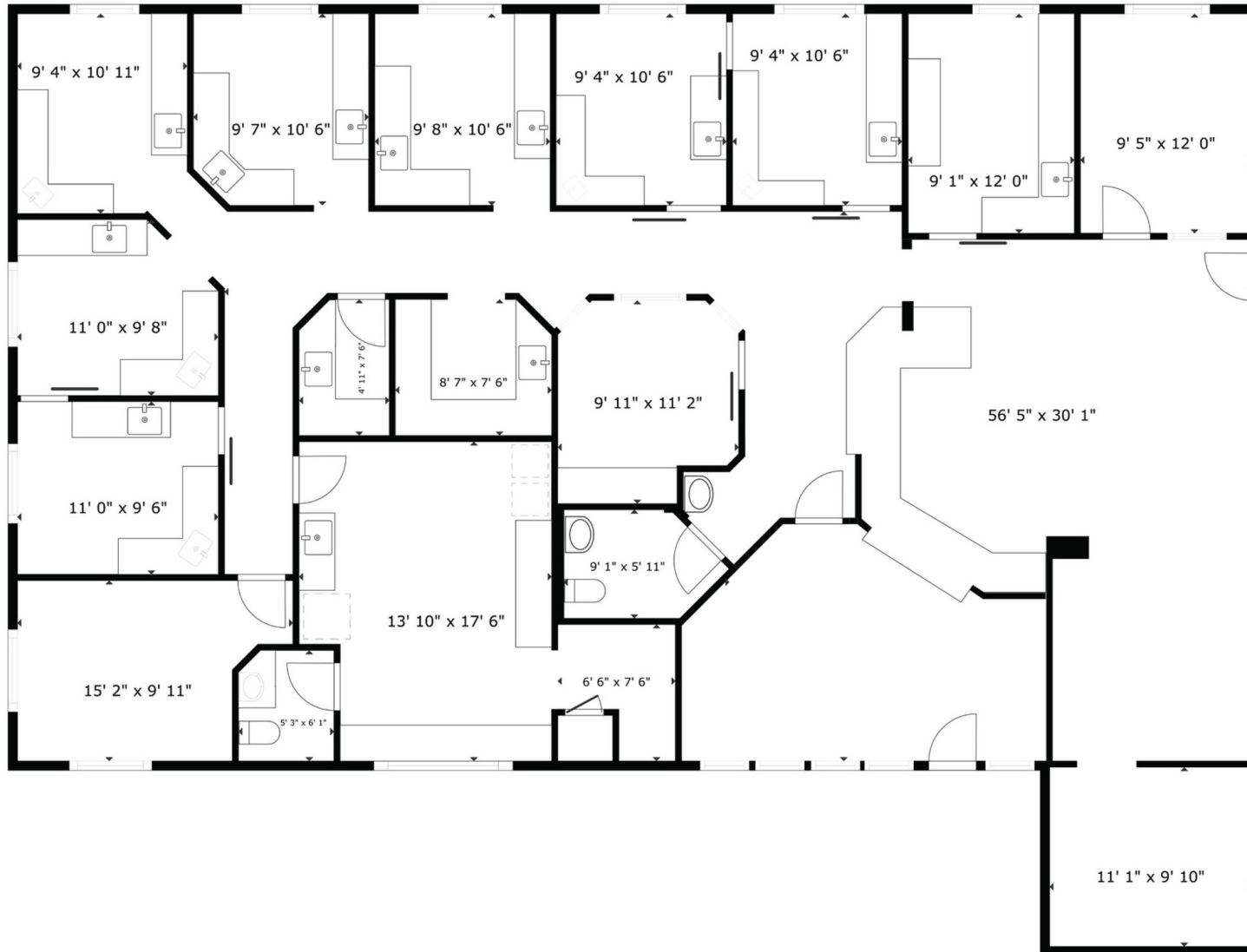
Additional Photos



Standalone Medical Office Building For Lease

4491 W Northern Ave, Glendale, AZ 85301

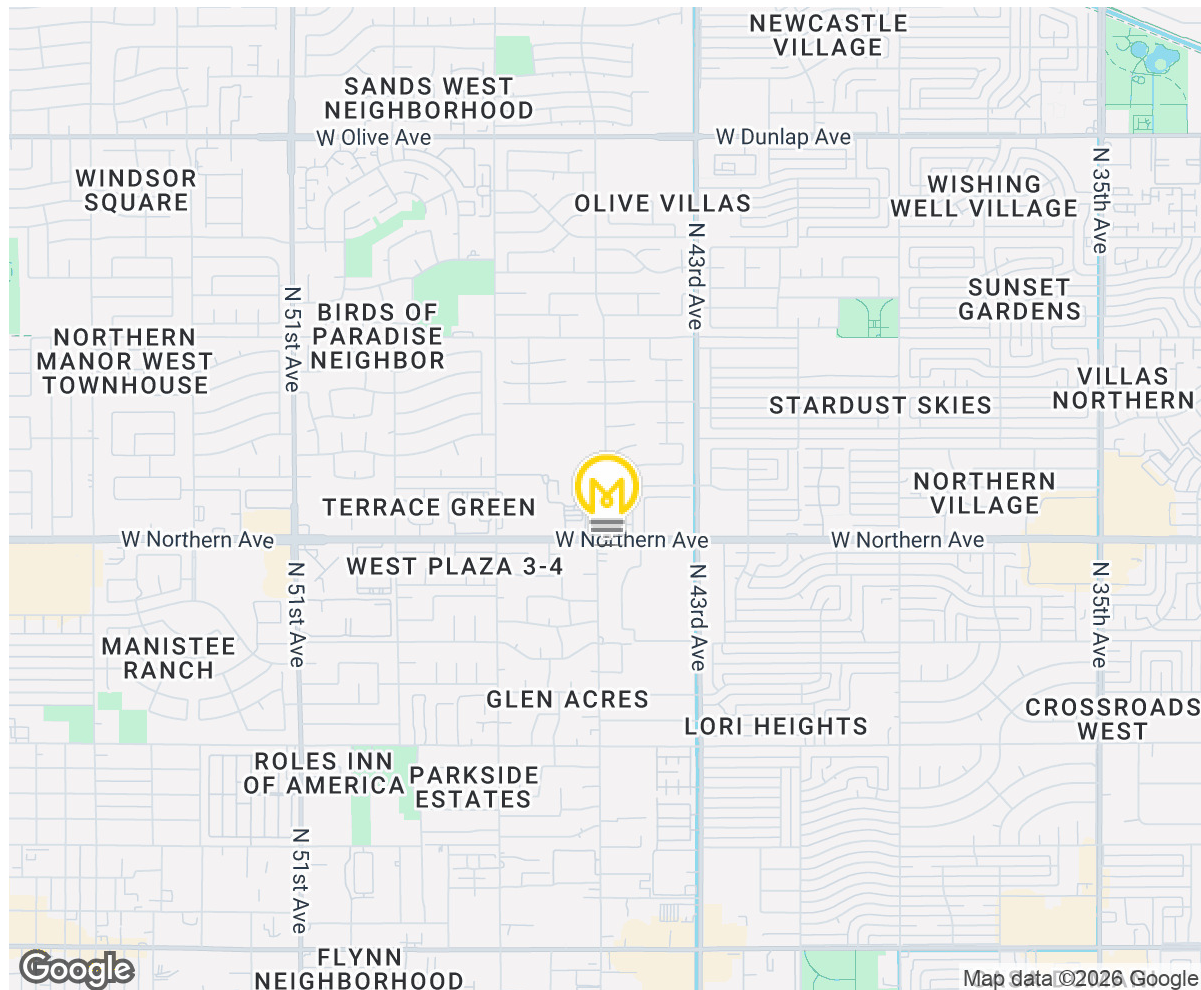
Floor Plan



Standalone Medical Office Building For Lease

4491 W Northern Ave, Glendale, AZ 85301

Site Details



DEMOGRAPHICS	0.25 Miles	0.5 Miles	1 Mile
Total Households:	344	1,714	7,830
Total Population:	1,099	5,198	20,980
Average HH Income:	\$106,772	\$94,787	\$78,953