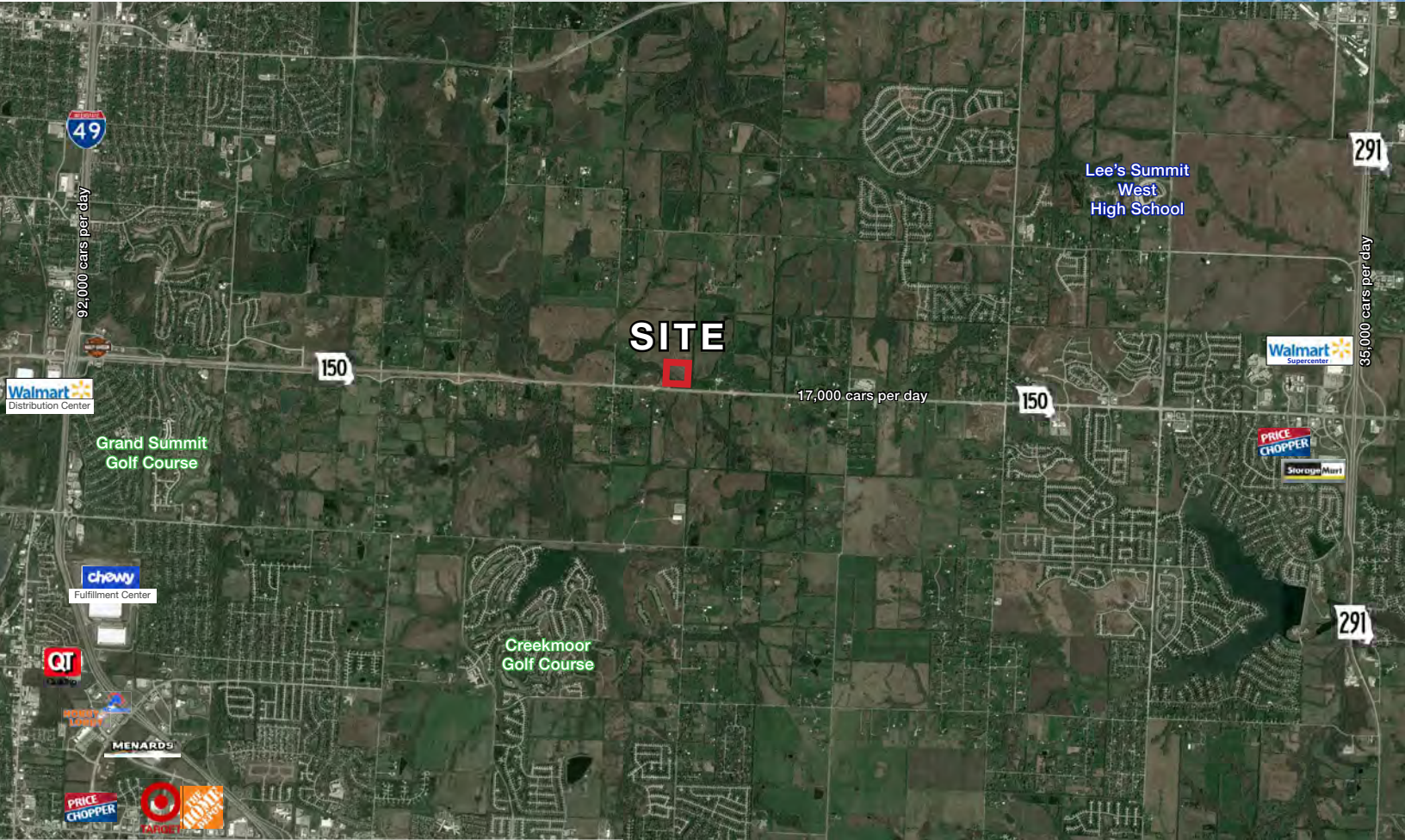




# DEVELOPMENT LAND FOR SALE

11400 E. 150 Highway, Kansas City, Missouri



## SALE PRICE: \$660,000 | 26.35 ACRES

### DEMOGRAPHICS

	1 mile	3 miles	5 miles
Estimated Population	155	18,1570	105,855
Avg. Household Income	\$140,581	\$147,212	\$114,455

- Great location for commercial service businesses and contractors
- Conveniently situated between Interstate 40 and Highway 291
- Quick access to Kansas City, Lee's Summit, and Greenwood, Missouri populations

 [CLICK HERE TO VIEW MORE LISTING INFORMATION](#)

For More Information Contact: *Co-Brokers*  
MITCH DICARLO | 816.412.7320 | [mjdicarlo@blockandco.com](mailto:mjdicarlo@blockandco.com)  
Block & Company, Inc. Realtors  
MARK DICARLO | 913.626.8899 | [mark@mdicarlo.com](mailto:mark@mdicarlo.com)  
M. DiCarlo, LLC | Real Estate Investments





# DEVELOPMENT LAND FOR SALE

11400 E. 150 Highway, Kansas City, Missouri

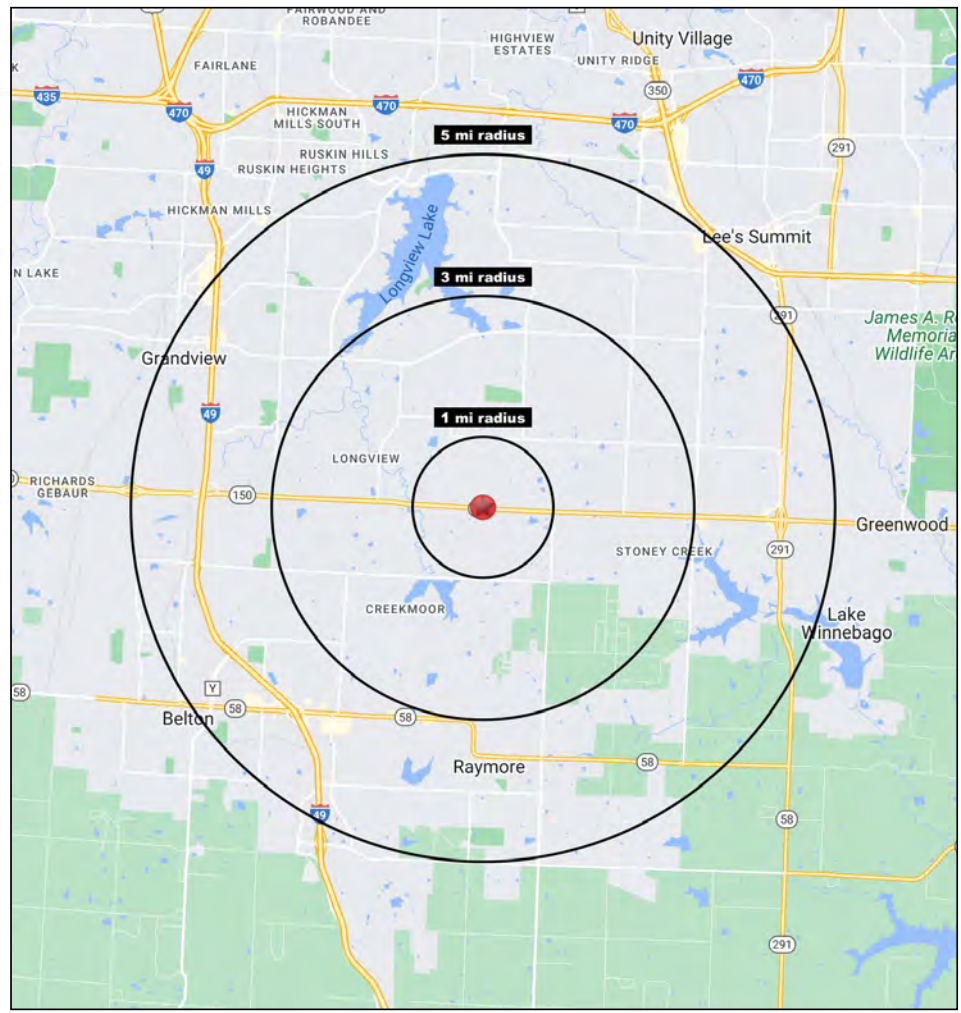
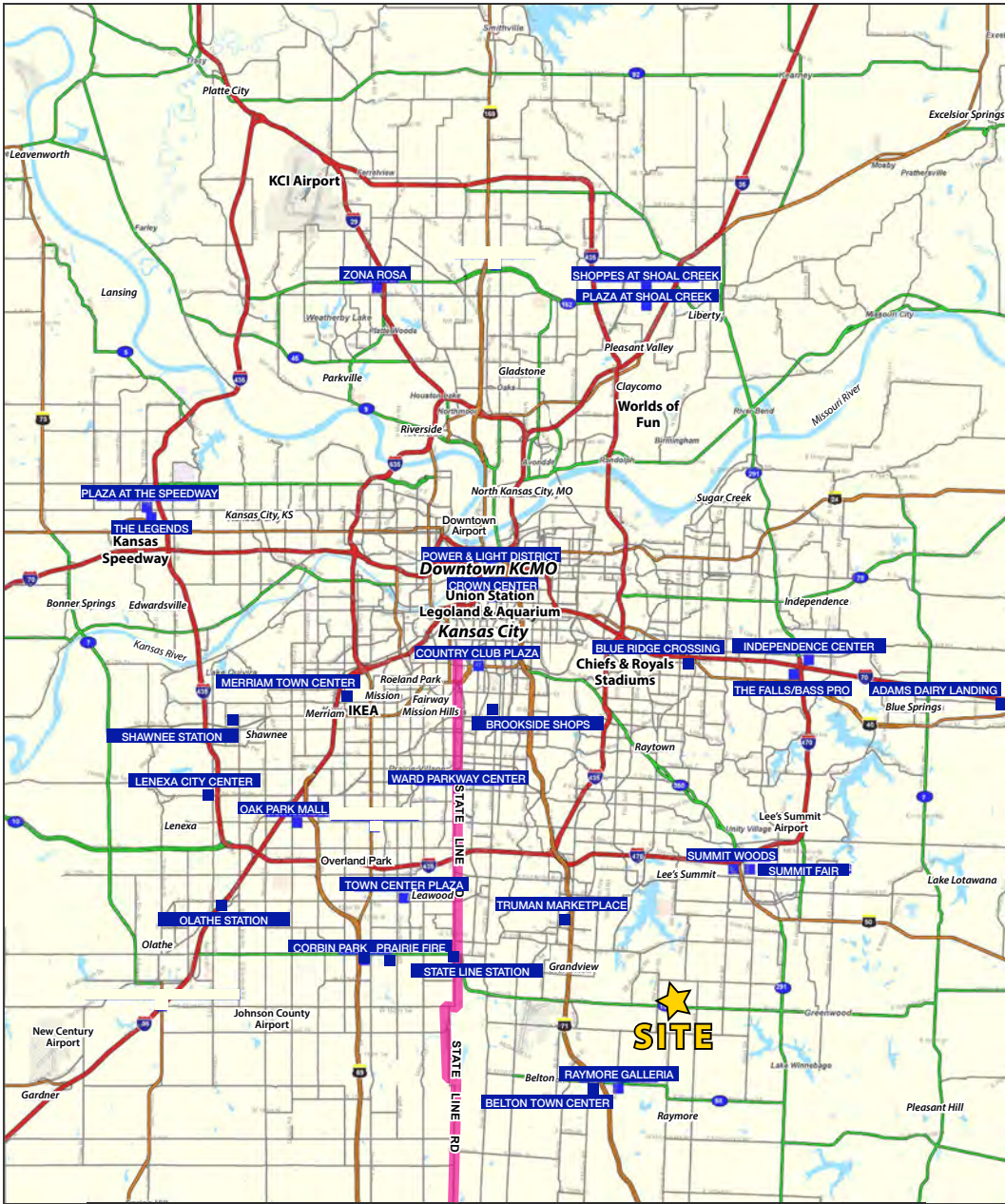
## PARCEL MAP





# DEVELOPMENT LAND FOR SALE

11400 E. 150 Highway, Kansas City, Missouri





# DEVELOPMENT LAND FOR SALE

## 11400 E. 150 Highway, Kansas City, Missouri

11400 MO-150 Kansas City, MO 64149	1 mi radius	3 mi radius	5 mi radius
<b>Population</b>			
2023 Estimated Population	155	18,570	105,855
2028 Projected Population	213	21,709	113,917
2020 Census Population	166	17,289	101,435
2010 Census Population	126	13,373	90,076
Projected Annual Growth 2023 to 2028	7.5%	3.4%	1.5%
Historical Annual Growth 2010 to 2023	1.7%	3.0%	1.3%
2023 Median Age	34.5	36.6	37.8
<b>Households</b>			
2023 Estimated Households	55	6,751	40,651
2028 Projected Households	75	7,803	43,022
2020 Census Households	54	6,006	38,222
2010 Census Households	50	4,688	33,424
Projected Annual Growth 2023 to 2028	7.1%	3.1%	1.2%
Historical Annual Growth 2010 to 2023	0.8%	3.4%	1.7%
<b>Race and Ethnicity</b>			
2023 Estimated White	79.2%	76.8%	70.7%
2023 Estimated Black or African American	12.9%	14.7%	19.2%
2023 Estimated Asian or Pacific Islander	2.9%	2.1%	1.9%
2023 Estimated American Indian or Native Alaskan	0.3%	0.3%	0.3%
2023 Estimated Other Races	4.7%	6.1%	7.8%
2023 Estimated Hispanic	4.4%	5.0%	6.9%
<b>Income</b>			
2023 Estimated Average Household Income	\$140,581	\$147,212	\$114,455
2023 Estimated Median Household Income	\$134,474	\$129,734	\$92,604
2023 Estimated Per Capita Income	\$49,952	\$53,523	\$43,990
<b>Education (Age 25+)</b>			
2023 Estimated Elementary (Grade Level 0 to 8)	0.2%	1.5%	1.9%
2023 Estimated Some High School (Grade Level 9 to 11)	0.8%	2.4%	3.6%
2023 Estimated High School Graduate	14.4%	18.9%	26.0%
2023 Estimated Some College	18.2%	21.1%	22.3%
2023 Estimated Associates Degree Only	8.4%	8.3%	8.6%
2023 Estimated Bachelors Degree Only	35.7%	29.1%	23.8%
2023 Estimated Graduate Degree	22.3%	18.7%	13.7%
<b>Business</b>			
2023 Estimated Total Businesses	5	286	2,745
2023 Estimated Total Employees	30	1,271	26,700
2023 Estimated Employee Population per Business	6.4	4.4	9.7
2023 Estimated Residential Population per Business	33.0	64.9	38.6

©2024. Sites USA. Chandler, Arizona. 480-491-1112 Demographic Source: Applied Geographic Solutions 11/2023. TIGER Geographv - RS1

