

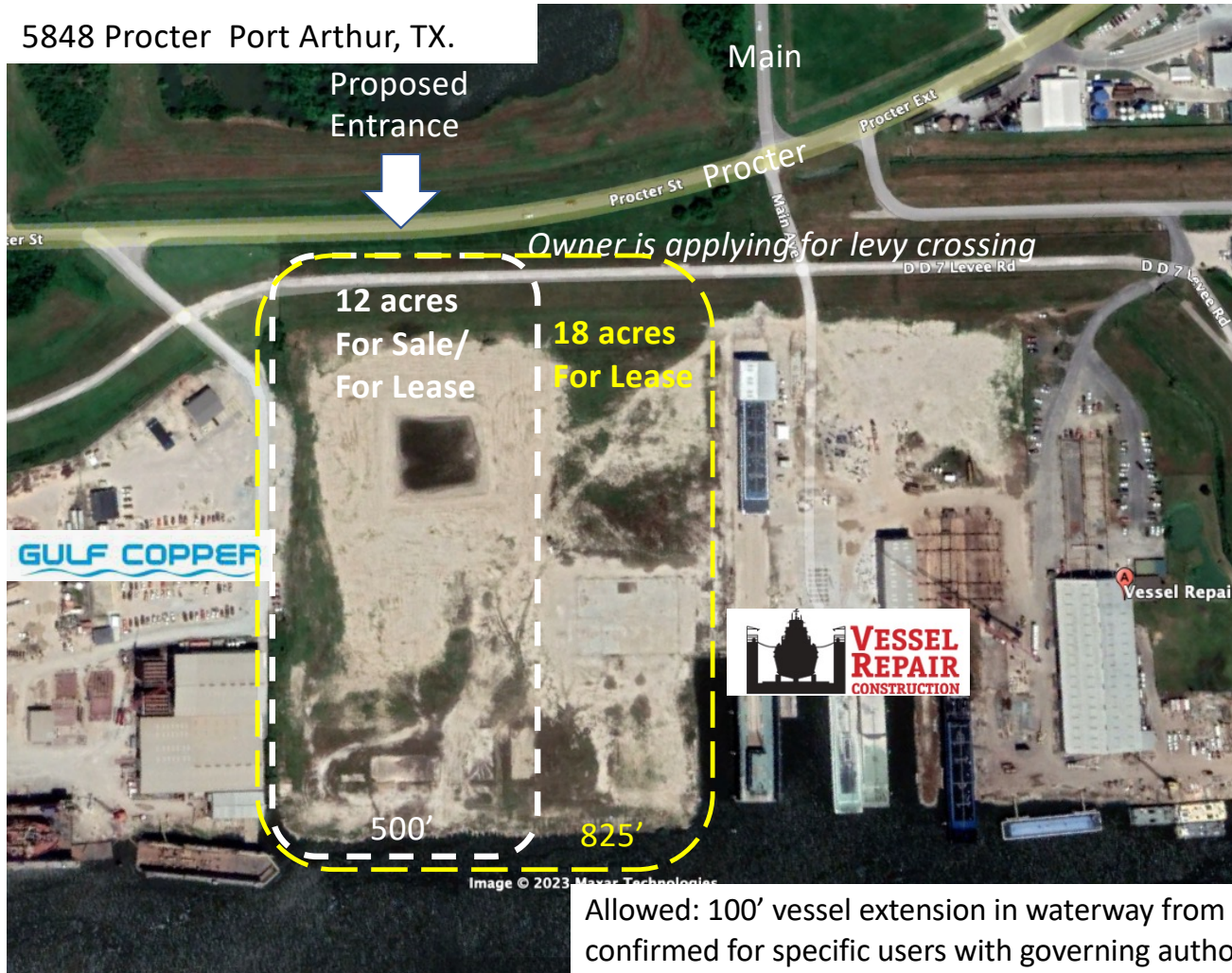


5848 Procter Extension Port Arthur, TX. 77642



5848 Procter Extension Port Arthur, TX. 77642

5848 Procter Port Arthur, TX.



Allowed: 100' vessel extension in waterway from dock – to be confirmed for specific users with governing authorities

RECENT IMPROVEMENTS TO THE PROPERTY



Approximate depth at dock: 12'-14'
Transforms quickly to 20'

- ✓ All concrete slabs have been removed
- ✓ Site graded
- ✓ Demolished concrete used to refurbish dock
- ✓ Installed monopiles along the dock – 32" diameter/ 60' length with 25' above mudline/ 7/8's inch wall thickness