



WEWORK AT

# Midtown Center

WASHINGTON, DC

---

**wework**

© 2020 WeWork



# Midtown Center at a glance

14

TOTAL BUILDING FLOORS

142,721

TOTAL BUILDING SQ FT

2

WEWORK FLOORS +  
FULL FLOOR OPPORTUNITIES

103,296

TOTAL WEWORK SQ FT



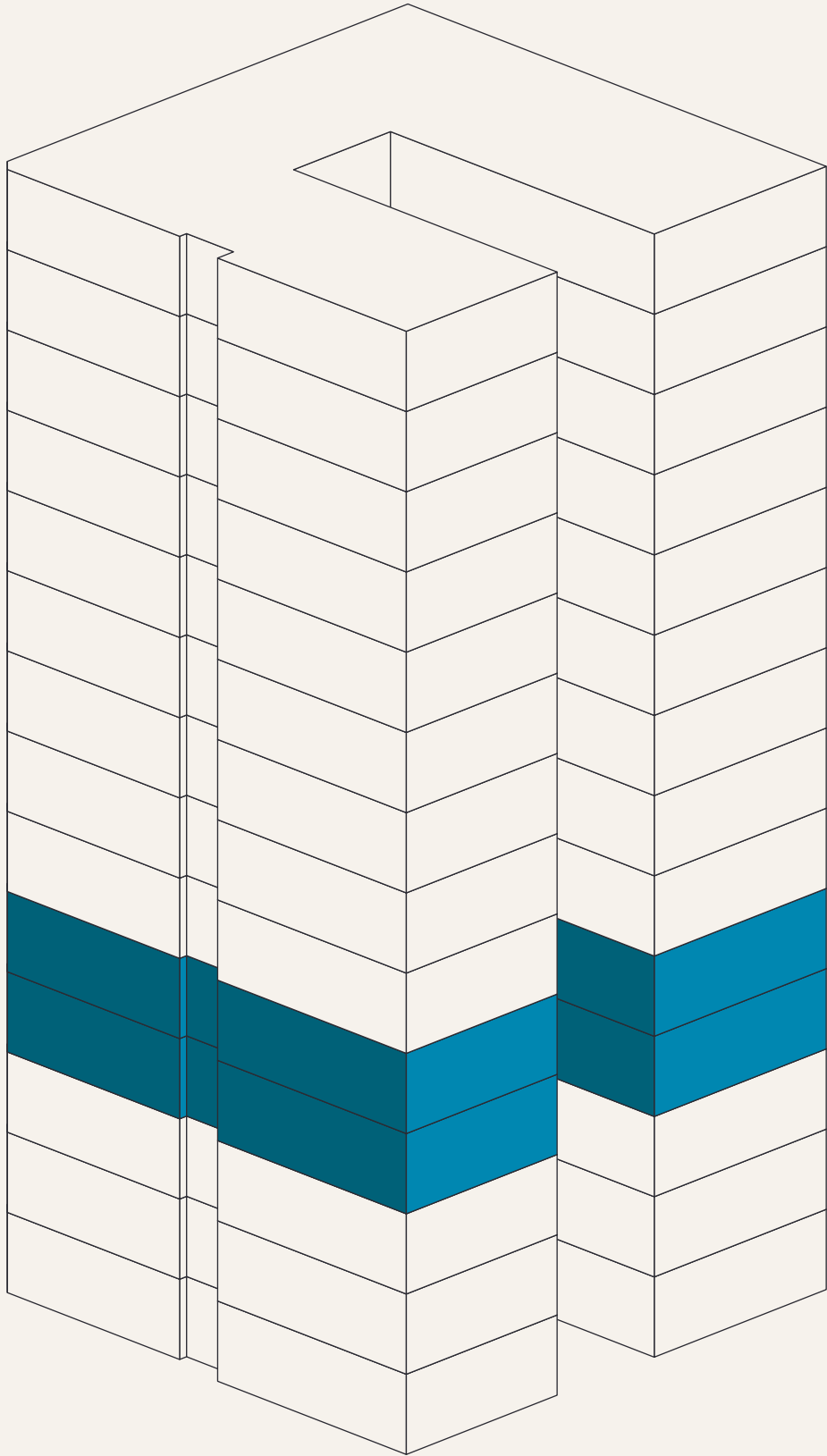
# Midtown Center—Home to D.C.’s Newest Iconic Design

## BUILDING OVERVIEW

Midtown Center is in the heart of downtown DC. This 865,000 RSF two- tower office was designed by New York-based SHoP Architects in 2017. The location is only 3 blocks from the metro lines and is only a short walk away from Thomas Circle and Farragut Square.

# Designed for efficiency, collaboration, and productivity

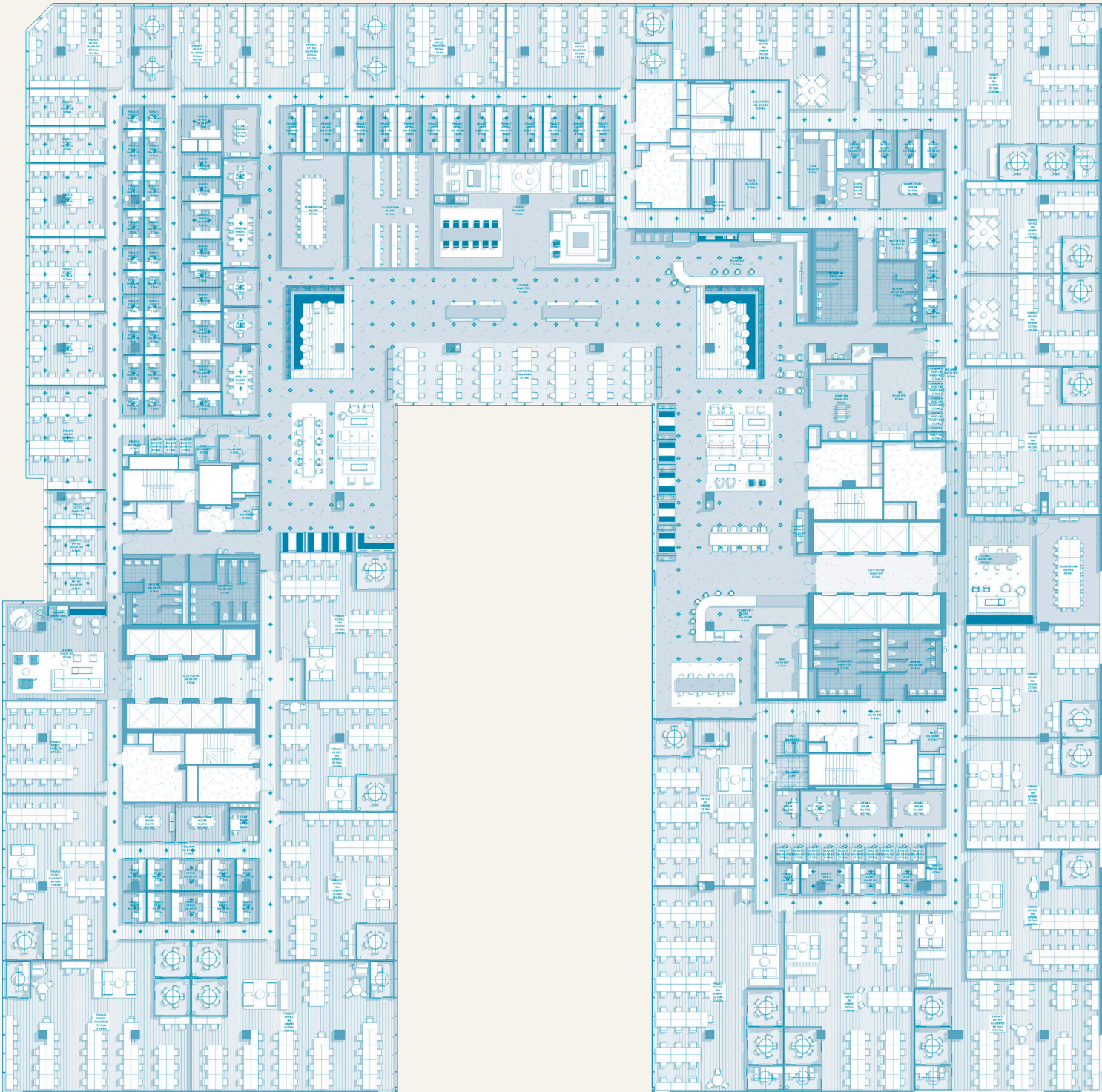
In addition to WeWork’s full suite of amenities and perks— from super-fast WiFi to 24/7 security—Midtown Center members also have access to the building’s unique amenities like a courtyard, boardroom, classroom, electric car charging, fitness facility, and library. Looking for something in particular? Our onsite staff members will be sure to point members in the right direction.



## WEWORK FOOTPRINT

FLOOR	RSF
4	68,223
5	35,073

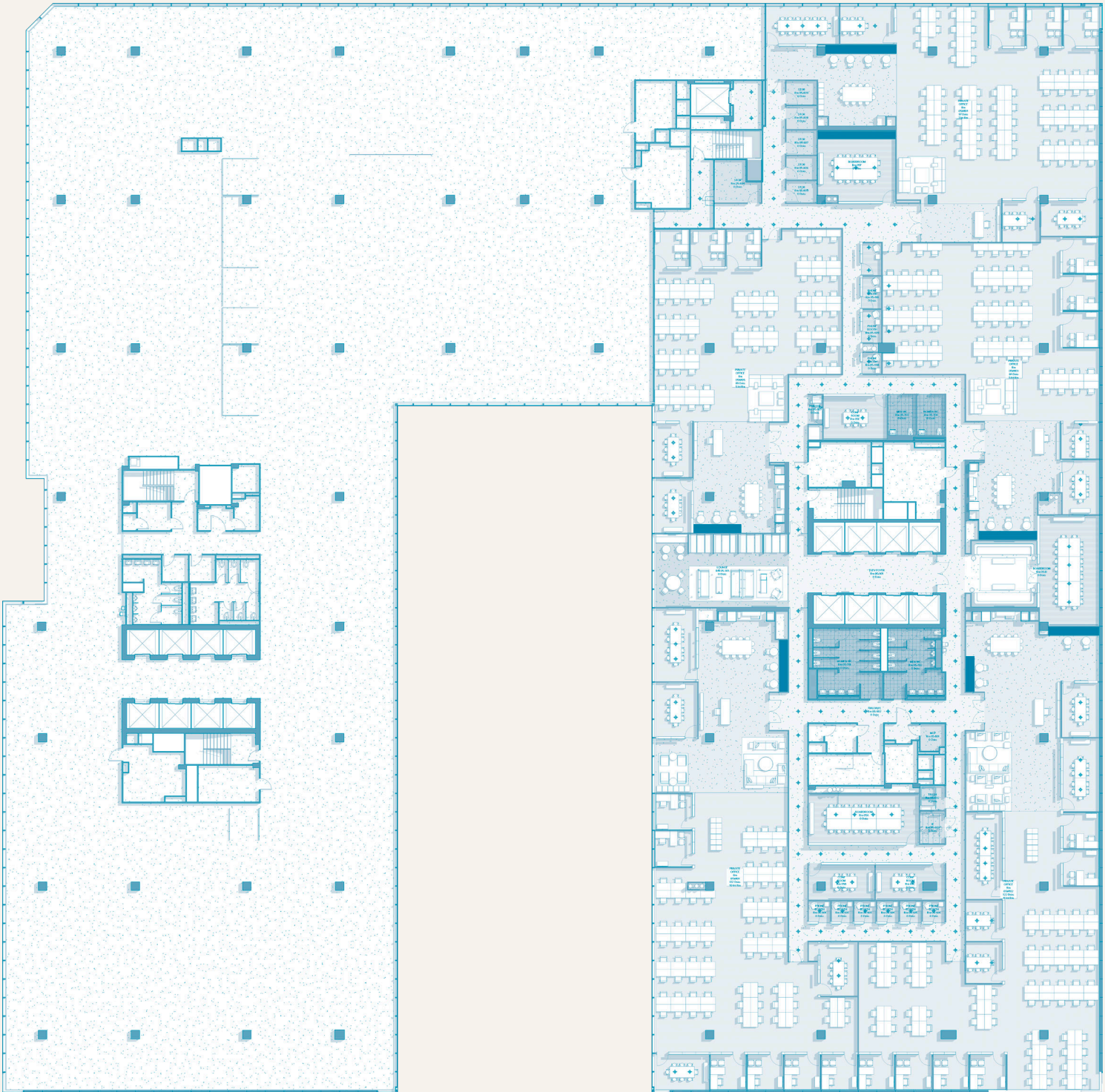




# 4th Floor

68,223 RSF





# 5th Floor

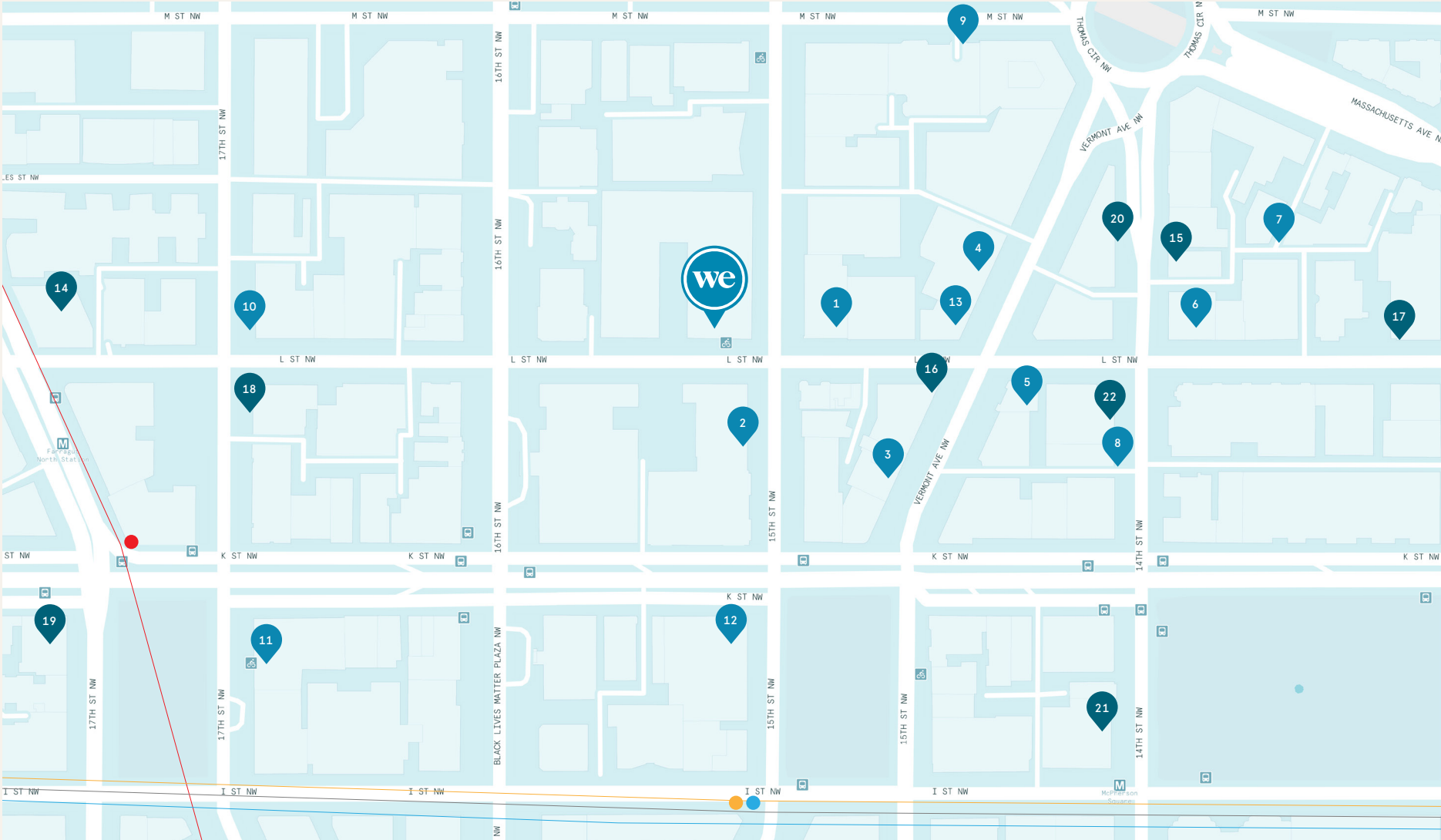
35,073 RSF





# The city at your doorstep

Midtown Center is located in the heart of downtown DC. This massive development is a destination in its own right, with Class A amenities at every turn. Members have access to amazing onsite retail, fast-casual dining spots, and fine dining like Philotino (a new Greek concept by Michelin-starred chef Nicholas Stefanelli), Dauphine’s by chef Kyle Baily, and Akêdo, the sister restaurant to acclaimed Shōtō. On top of amazing onsite conveniences, Midtown Center’s location is also extremely convenient, sitting just three blocks from the Farragut North Metro station at 15th and L streets NW.



## EAT & DRINK

- 1. Nerds & Nibblers
- 2. G Street Food
- 3. Living Room DC
- 4. Starbucks
- 5. Stan’s Restaurant
- 6. Dunkin’ Donuts
- 7. Green Lantern
- 8. Point Chaud Cafe & Crepes
- 9. The Westin Washington, D.C. City Center Fringetree Restaurant
- 10. Peet’s Coffee
- 11. Subway
- 12. JOE & THE JUICE
- 13. 7-Eleven

## RETAIL, LIFESTYLE, & ENTERTAINMENT

- 1. LA Fitness
- 2. Balance Gym
- 3. Bank of America Financial Center
- 4. Drafthouse Comedy Theater
- 5. FedEx Office Print & Ship Center
- 6. Capital One Bank
- 7. CVS
- 8. HSBC Bank
- 9. United States Postal Service

## NEARBY TRANSPORTATION

- McPherson Square 0.2 mi (Commuter Rail, Blue, Orange, and Silver Lines)
- Farragut North (Commuter Rail, Red Line) 0.3 mi
- Farragut West 0.5 mi (Commuter Rail, Blue, Orange, and Silver Lines)
- L’Enfant 0.3 mi (Commuter Rail, Yellow Line, VRE and bus stop to Dulles International Airport)
- Union Station 2.0 mi (Commuter Rail, Red Line, Amtrak and Marc Trains)

# 1100 15th St NW Washington, DC 20005

---



**wework**

© 2020 WeWork. The WeWork trademark and related logos are the property of WeWork Companies LLC. Any reference to third party names are for reference and informational purposes only and should not be considered an endorsement or association of WeWork or vice versa. Photographs contained herein are representative examples of various WeWork locations and do not necessarily depict the WeWork location referenced in the brochure. While reasonable efforts have been made to check the accuracy of the information contained here, WeWork, its officers, employees, directors, and representatives, make no warranty, express or implied, regarding the accuracy of the information and disclaim any liability arising from the use of the information contained herein. All dimensions are approximate and subject to variances. It is your obligation to independently verify particulars of the property. WeWork reserves the right to make changes.