

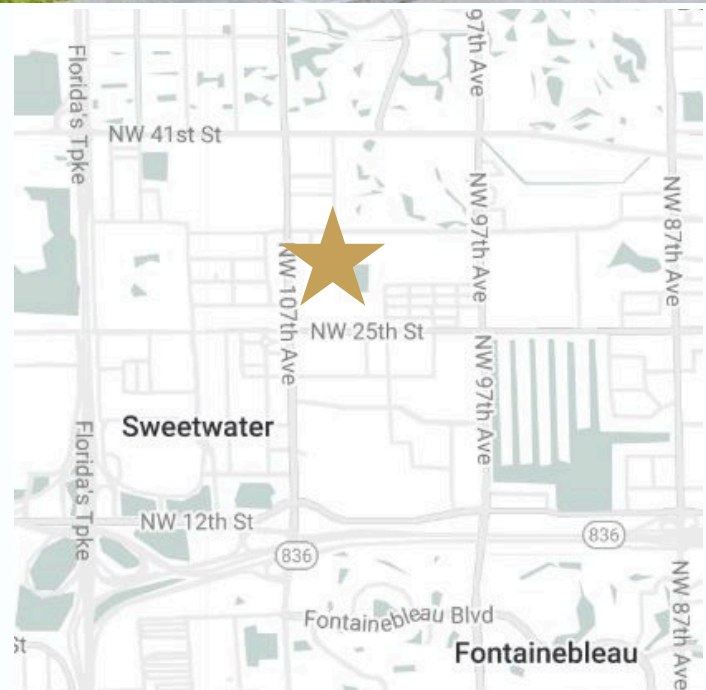
# FREE-STANDING INDUSTRIAL BUILDING AVAILABLE FOR LEASE



**10505 NW 29 Terrace, Doral, FL 33172 | ~ 11,000 SF**

## PROPERTY HIGHLIGHTS

- ~ 11,000 SF AVAILABLE TOTAL
- ~ 9,500 SF WAREHOUSE AREA
- ~ 1,500 SF OFFICE SPACE - BULLPEN AREA W/  
4 PRIVATE OFFICES + 1 CONFERENCE ROOM
- KITCHEN & 3 RESTROOMS
- A/C'D ASSEMBLY ROOM
- 3 DOCK HIGH DOORS + 1 RAMP
- 3-PHASE HEAVY POWER (110/208V)
- AUTOMATED SHUTTERS
- RACKS INCLUDED IN THE LEASE
- AVAILABLE SEPTEMBER 1ST



**LEASE RATE**  
**\$23.00 PSF MG**

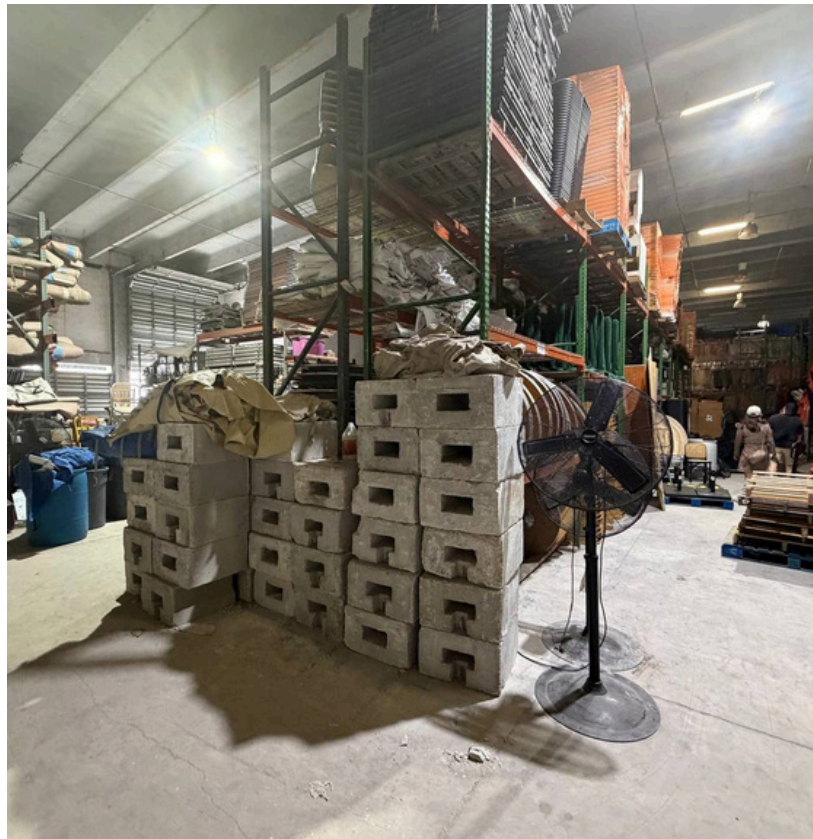


Reshma Parvani, SIOR  
Broker  
305-342-9576  
rparvani@parvanigroup.com

Vishal Parvani, SIOR  
Broker - Associate  
786-205-5579  
vparvani@parvanigroup.com

NOTE: This offering subject to errors, omissions, prior sale or withdrawal without notice.

# PHOTOS



Reshma Parvani, SIOR

Broker

305-342-9576

rparvani@parvanigroup.com

Vishal Parvani, SIOR

Broker-Associate

786-205-5579

vparvani@parvanigroup.com