



**Roosevelt Office Center**

**Camelot**  
Community Care

15500

# Office for Lease

15500 Roosevelt Blvd, Clearwater FL 33760



Roosevelt Office Center is **now under new ownership**. Camelot Community Care will be occupying the 2nd floor and welcome other non-profit (or) for-profit companies and government entities to enjoy the strategic location and enhancements Camelot plans.



# Specifications

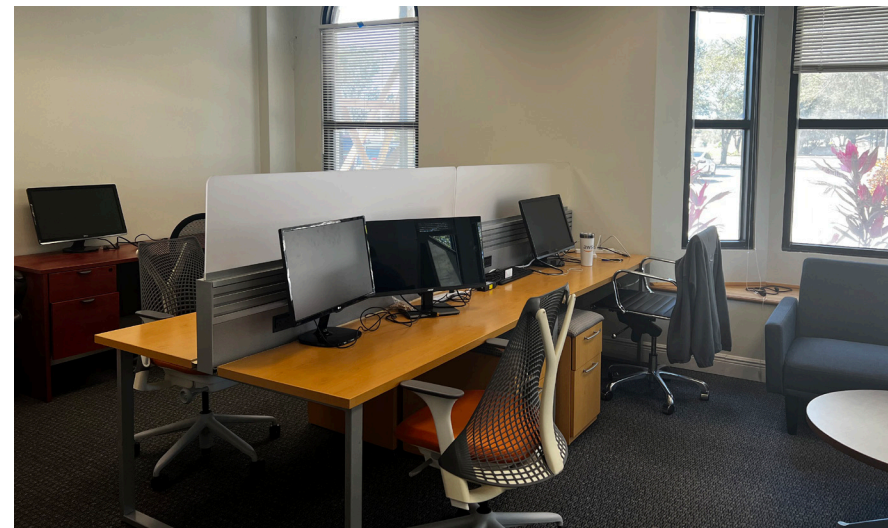
Contact listing agent for more info

Available  
1,861 RSF

Lease Rate  
\$19.50/RSF

Flexible  
Term

- Ground floor space
- Bathed in natural light
- Very serene & comfortable office space
- Modified gross + electric
- Management on premises
- Boutique business environment
- Abundant parking (5/1000)
- Many amenities nearby







*Strong demographic  
profile and deep  
employment pool*

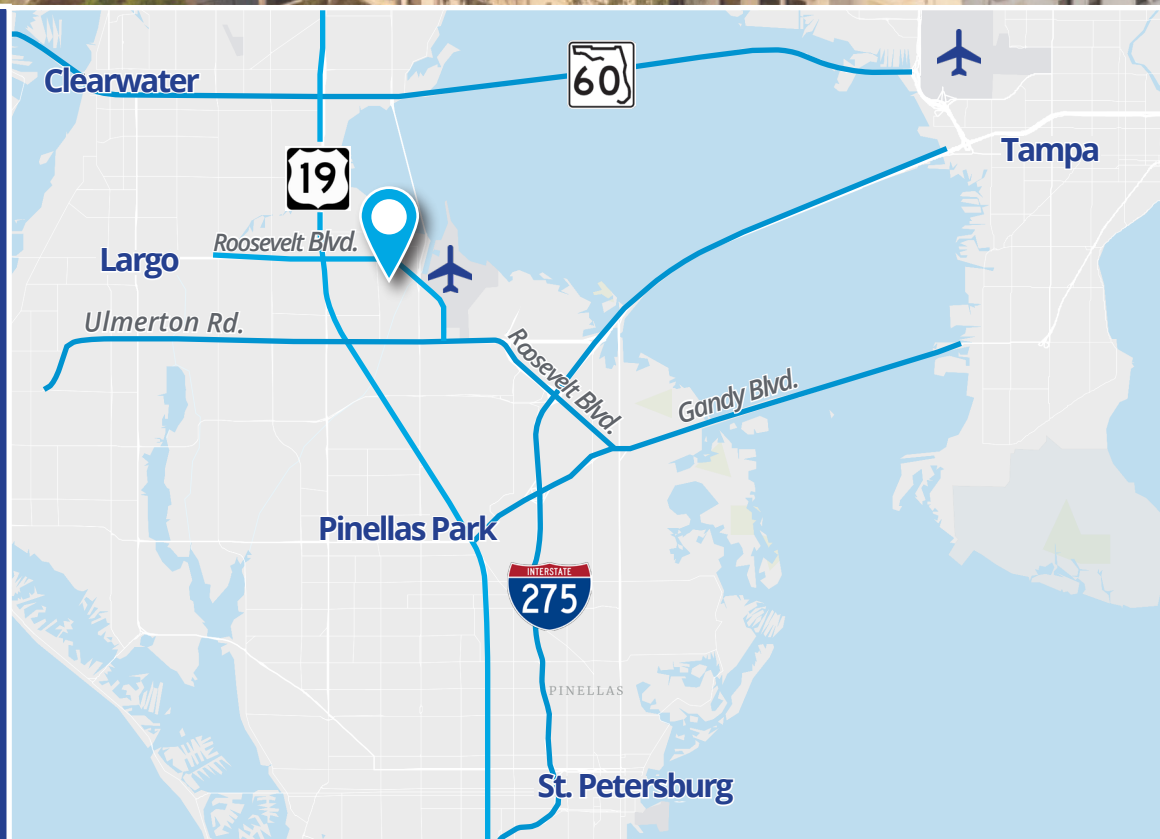


*Highly accessible  
to regional  
transportation*



*Home to the  
region's  
top employers*

CLOSE TO EVERYTHING! Roosevelt Office Center is centrally located and provides direct access to Interstate 275, 25 minutes to both downtown Tampa or downtown St. Petersburg, 3 minutes to St. Pete/ Clearwater Airport and 20 minutes to Tampa International Airport.



# Roosevelt Office Center Major Employers

Within 3.5-Mile Radius

## Pinellas Gateway: Home to Some of Tampa Bay's Largest Employers

Twenty-two companies within 3.5 miles of the Roosevelt Office Center have annual revenue of \$100M or more and up to 2,800 employees.

#	Company Name
1	Tech Data Corp
2	Jabil, Inc.
3	General Dynamics Ordnance & Tactical Systems
4	Raymond James Financial, Inc.
5	HSN, Inc.
6	Power Design
7	Compulink Cable Assemblies, Inc.
8	Arthur Rutenberg Homes
9	Pinch A Penny, Inc.
10	US Ameri Bancorp, Inc.
11	Catalent
12	Valpak Direct Marketing Systems
13	Raymond James Bank NA
14	Digital Media Solutions
15	CCS Medical, Inc.
16	Signature Aviation
17	APG Electric, Inc.
18	DRS Technologies/Leonardo DRS
19	e-TeleQuote Insurance, Inc.
20	PODS LLC
21	PODS
22	Salon Centric





# Demographics

5-mile radius



Population  
186,980



Projected Population Growth  
4%



Employee Drive Time  
Under 30 Minutes: 71%  
30-60 Minutes: 24%  
Over 60 Minutes: 5%



Median Home Value  
\$221,492



Unemployment Rate  
3.0%



Education  
High School Diploma: 30%  
Some College: 32%  
College Degree: 29%



Average Age  
47.2



Average Household Income  
\$82,370

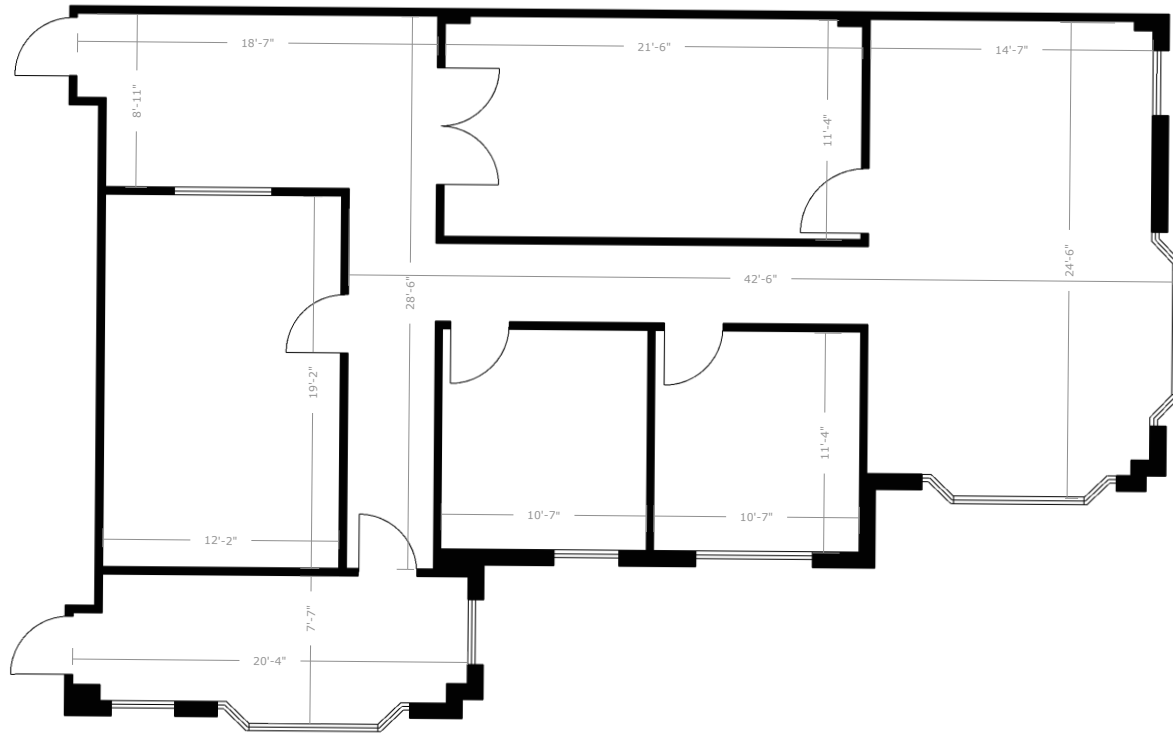
## Area Amenities

Within a 5 min drive



# Floorplans

Suite 101



1,861 rsf



311 Park Place Blvd., Suite 600  
Clearwater, FL 33759  
727 442 7184  
[www.colliers.com](http://www.colliers.com)

Call now for  
spontaneous  
showings!

Contact Me!

**Paula Clair Smith, CCIM**

*Sr Vice President | Commercial Services*

727 409 5539 Direct

[paulaclair.smith@colliers.com](mailto:paulaclair.smith@colliers.com)

Colliers (NASDAQ, TSX: CIGI) is a leading diversified professional services and investment management company. With operations in 62 countries, our 17,000 enterprising professionals work collaboratively to provide expert real estate and investment advice to clients. For more than 27 years, our experienced leadership with significant inside ownership has delivered compound annual investment returns of 20% for shareholders. With annual revenues of \$4.3 billion and \$57 billion of assets under management, Colliers maximizes the potential of property and real assets to accelerate the success of our clients, our investors and our people. Learn more at [corporate.colliers.com](http://corporate.colliers.com), Twitter @Colliers or LinkedIn.

