

NEWMARK

200 Barr Harbor Drive Conshohocken, PA



Building Features

Schuylkill riverfront views

Excellent parking (300 spaces, 225 covered)

Front door lobby drop-off

Located near the intersection of the Schuylkill Expressway (I-76) and the Blue Route (I-476), with a direct connection to the Pennsylvania Turnpike (I-276)

Numerous dining & retail amenities in Conshohocken

Walking distance to SEPTA Regional Rail – Conshohocken Station

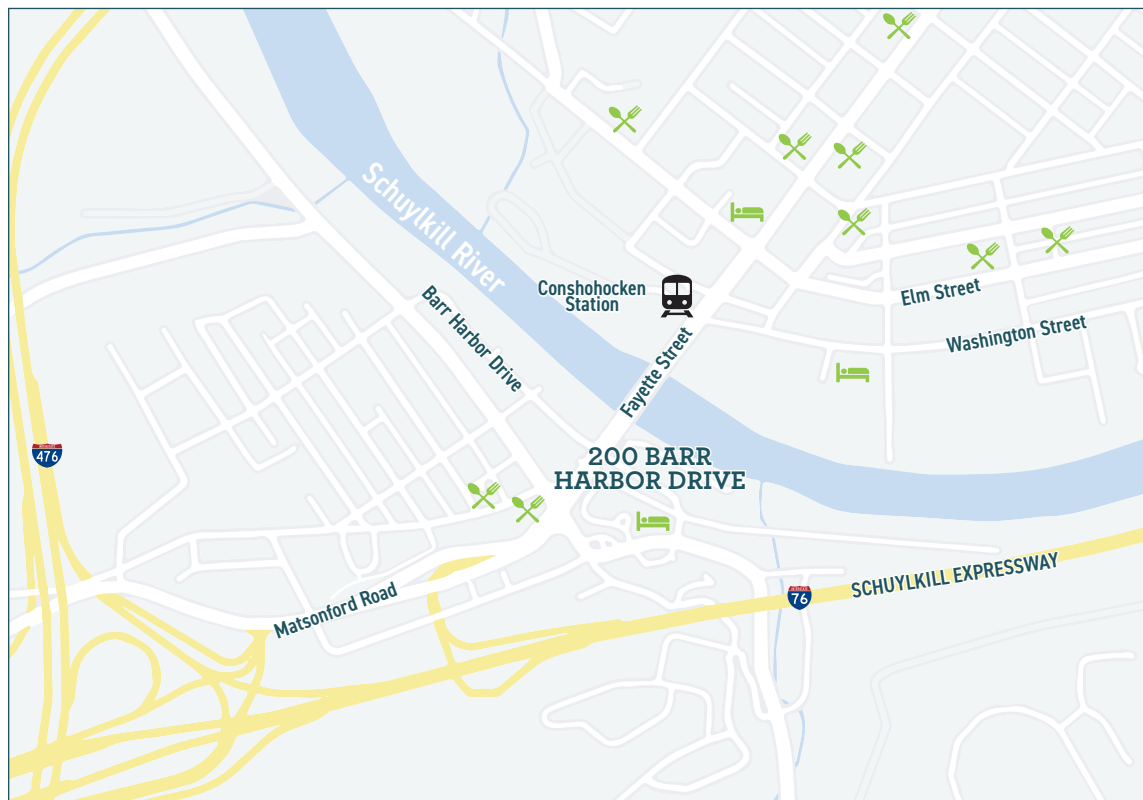
Adjacent to Marriott Philadelphia West

24/7 building access

West Conshohocken tax advantages (no business gross receipts tax)



Key Location



LODGING

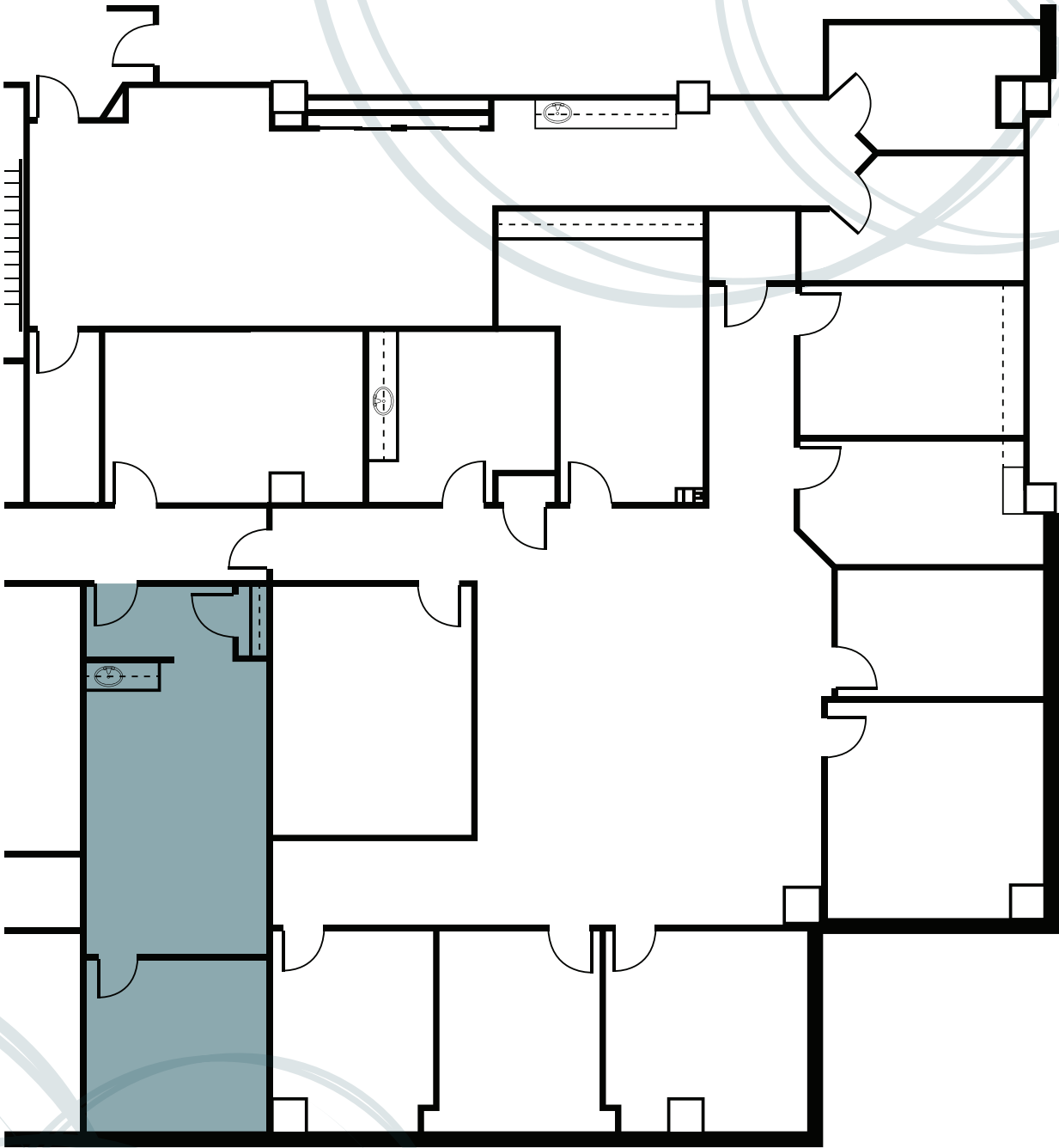
- Hotel West & Main
- Marriott Philadelphia West
- Residence Inn by Marriot

DINING

- Nudy's Café
- The Great American Pub
- Flanigan's Boathouse
- Blackfish
- Eat Greek
- El Limon
- Couch Tomato Café
- Guppy's Good Times
- The Gypsy Saloon
- Bar Sera
- Jasper's WestSide
- Pepperoncini

Availabilities

2nd Floor
593 SF



NEWMARK

For more information, contact our exclusive agents:

JAMES WILSON
Managing Director
610-755-6966
jim.wilson@nmrk.com

JEFF MACK
Executive Managing Director
t 610-755-6960
jeff.mack@nmrk.com

1000 Continental Drive, Suite 200, King of Prussia, PA 19406 | 610-265-0600 | nmrk.com

LICENSED IN PENNSYLVANIA AS NEWMARK REAL ESTATE

The information contained herein has been obtained from sources deemed reliable but has not been verified and no guarantee, warranty or representation, either express or implied, is made with respect to such information. Terms of sale or lease and availability are subject to change or withdrawal without notice.