

now leasing

UNION  
PARK



*JAMES CAMPBELL COMPANY LLC*



## CLASS A FINISHES ON-SITE PROPERTY MANAGEMENT

Each **Union Park** building has a two-story open atrium lobby. The buildings have stunning views of the Salt Lake Valley. Covered parking is available and the buildings are equipped with high-speed fiber optic network and Internet connectivity, as well as centralized security and surveillance.



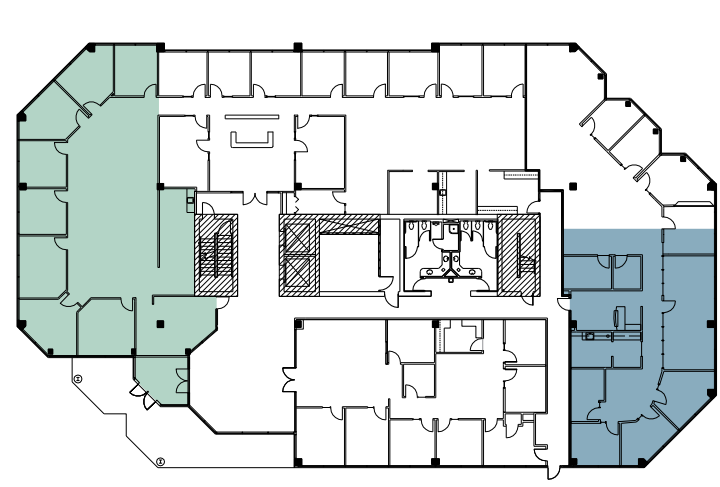
**UNION  
6975  
PARK**



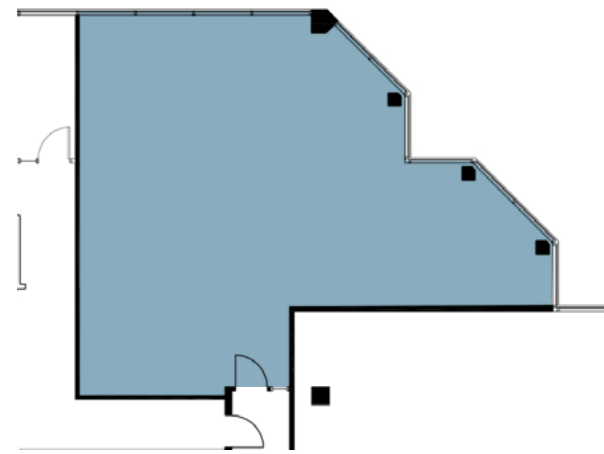
**Lobby and 1st Floor Vacant**



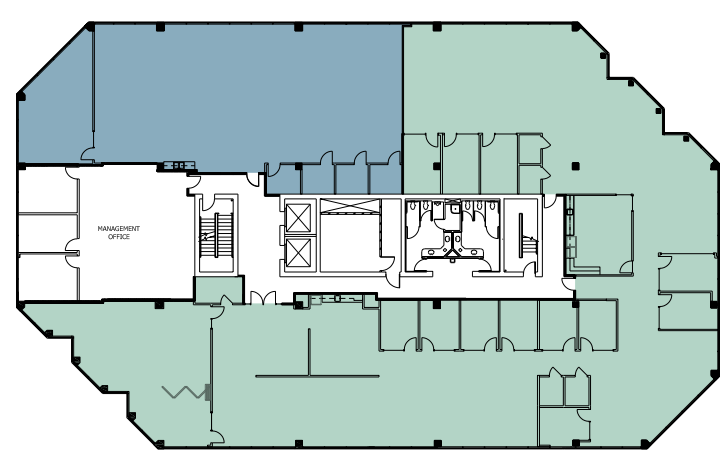
Lease Rate - \$27.00 PSF, FS



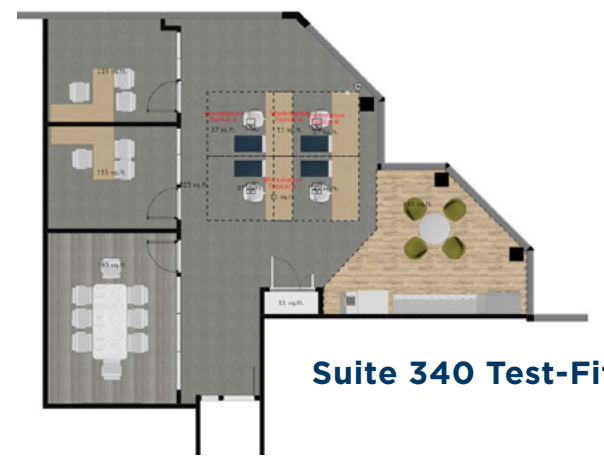
Floor	Suite	Size	Available
1	100	3,428 RSF	Immediately
1	150	2,326 RSF	Immediately



Floor	Suite	Size	Available
3	340	1,339 RSF	Immediately



Floor	Suite	Size	Available
5	500	11,275 RSF	Immediately
5	520	4,148 RSF	Immediately



**Suite 340 Test-Fit**



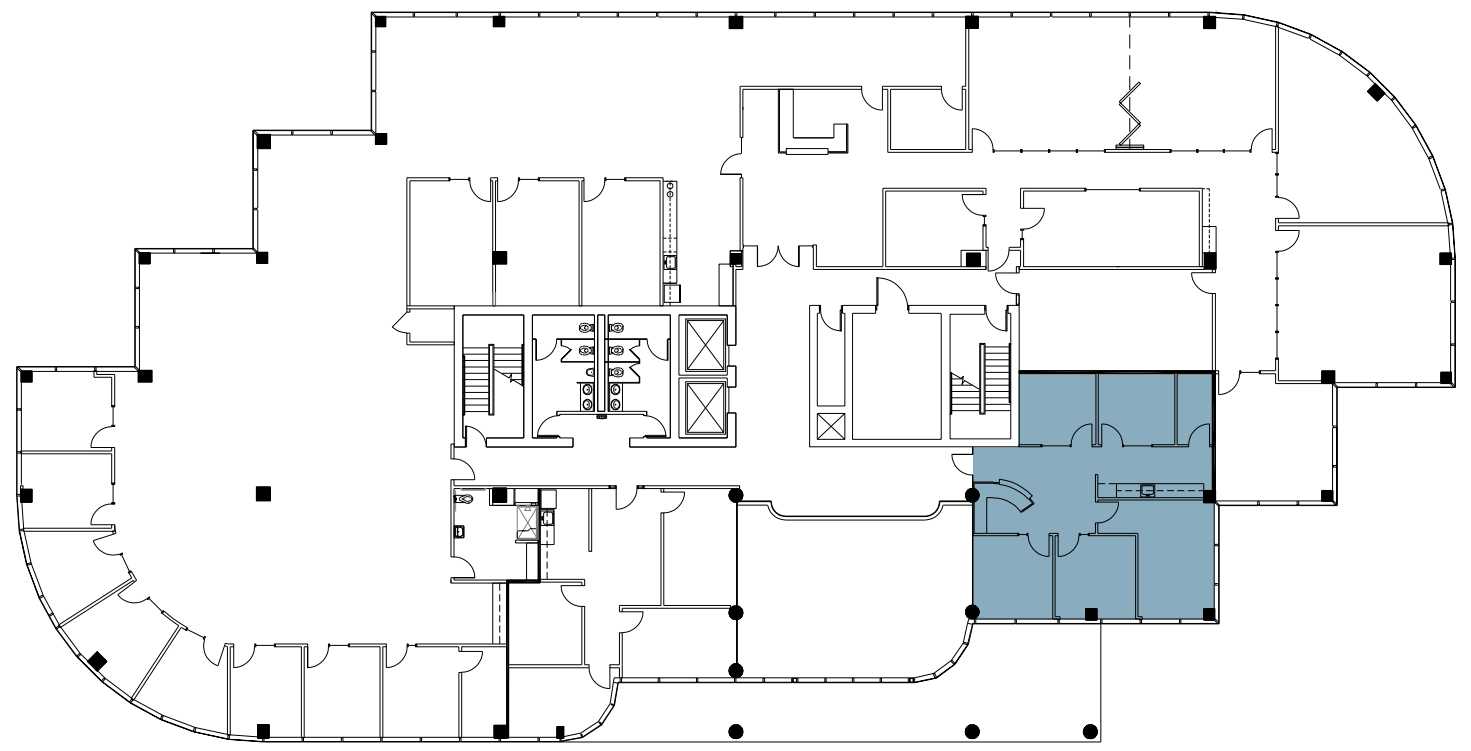
**UNION  
6985  
PARK**



**Lobby**



Lease Rate - \$27.00 PSF, FS



Floor	Suite	Size	Available
2	250	1,386 RSF	9/1/2021



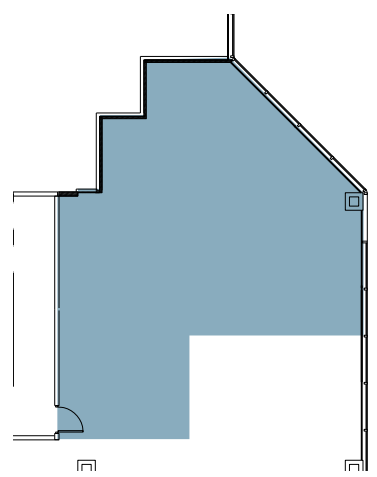
**UNION  
7050  
PARK**



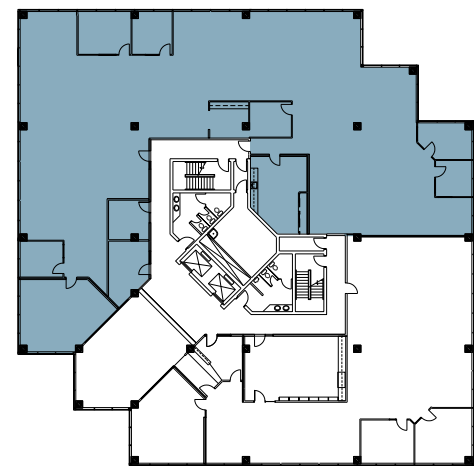
**Lobby and Fitness Center**



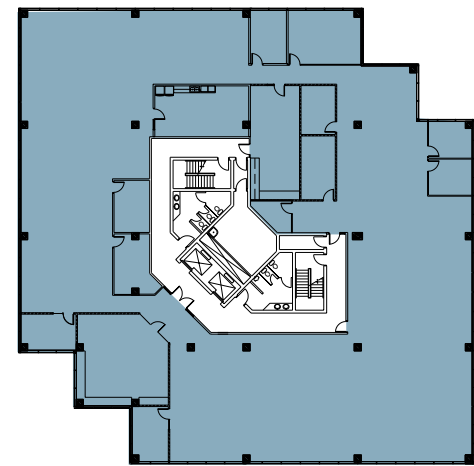
Lease Rate - \$26.00 PSF, FS



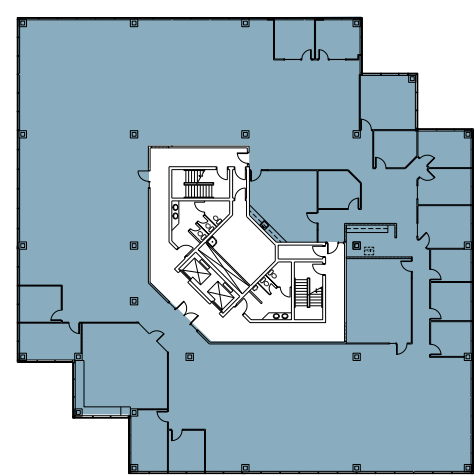
Floor	Suite	Size	Available
1	100	1,320 RSF	Immediately



Floor	Suite	Size	Available
2	200	8,881 RSF	8/1/2021



Floor	Suite	Size	Available
3	300	14,913 RSF	8/1/2021



Floor	Suite	Size	Available
5	500	15,055 RSF	8/1/2021

**Fifth Floor**



**UNION  
7070  
PARK**

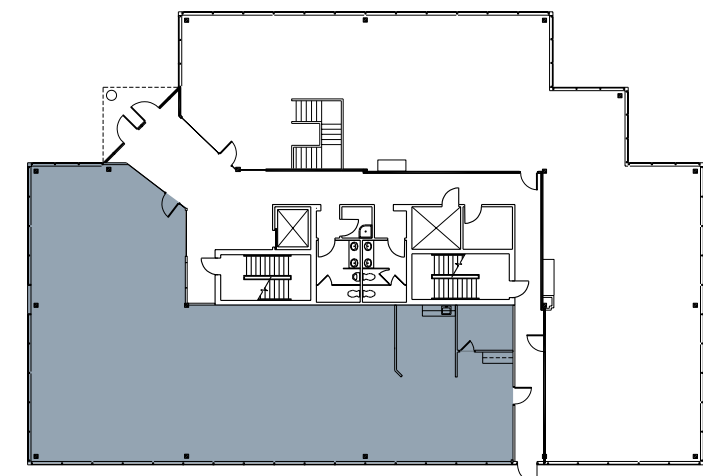


**Lobby**

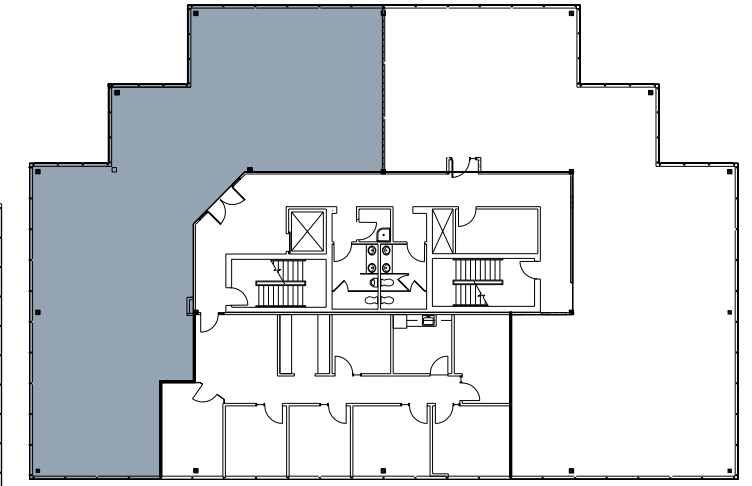


**3rd Floor**

Lease Rate - \$26.00 PSF, FS



Floor	Suite	Size	Available
1	150	3,678 RSF	Immediately



Floor	Suite	Size	Available
3	300	3,022 RSF	Immediately



**UNION  
PARK**

**Dana Baird, ccim**  
 Executive Managing Director  
 +1 801 303 5526  
 dana.baird@cushwake.com

**Mike Richmond**  
 Executive Managing Director  
 +1 801 303 5434  
 mike.richmond@cushwake.com

**Amanda Lawson**  
 Director  
 +1 801 303 5492  
 amanda.lawson@cushwake.com