

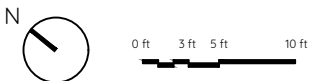
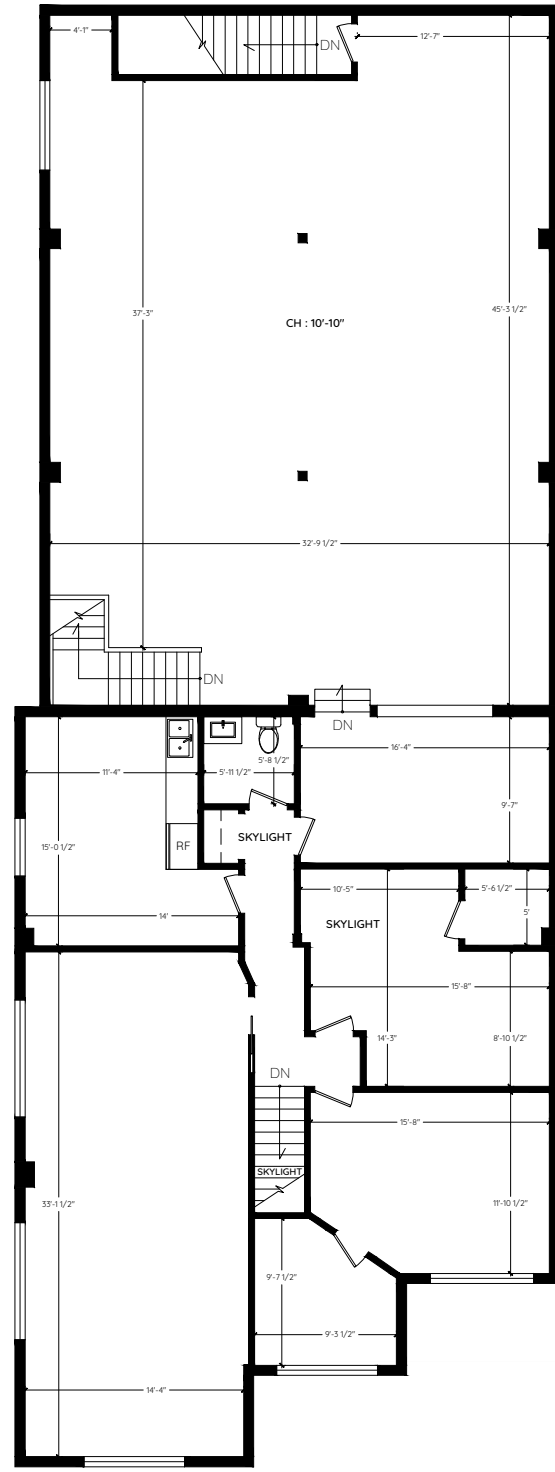
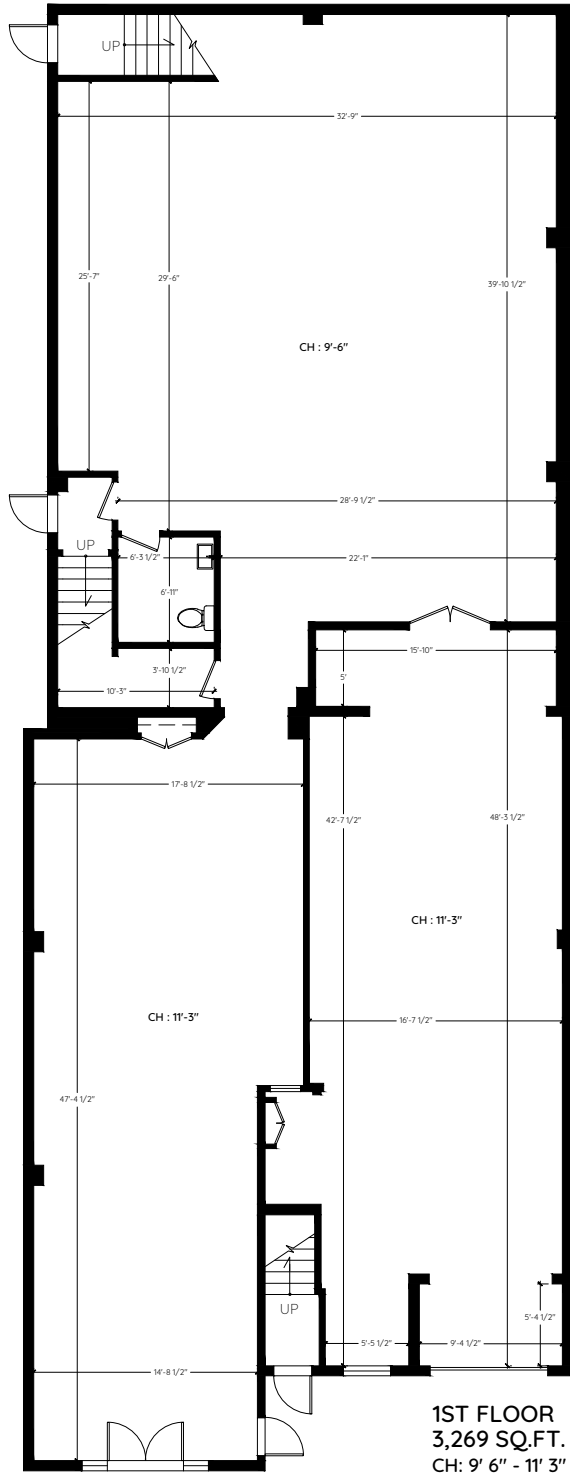
# 13479 KING GEORGE BOULEVARD

SURREY, BC

1ST FLOOR 3,269 SQ.FT.

2ND FLOOR 3,173 SQ.FT.

TOTAL USABLE AREA 6,442 SQ.FT.



The floor plan and measurements are approximate, typically within +/- 2%. These are intended strictly for advertising purposes. They may encompass unfinished areas and are not intended for architectural or construction applications. There may be variances in the numbers if there were restrictions on property access or if taking precise measurements at the time of measuring isn't feasible. E&O insured.