



FOR SALE

319 E McDowell Rd | Phoenix AZ 85004

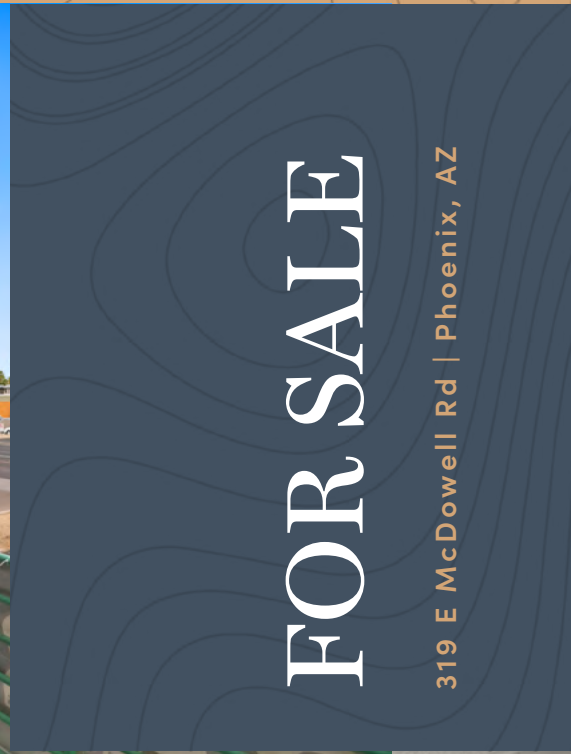
Office/Retail Building

CBRE

Property Highlights

319 E McDowell Rd is centrally located in an active business community, providing networking and collaboration opportunities. There are nearby amenities with numerous dining, retail, and recreational options in the vicinity, contributing to a balanced work-life environment. The central location helps attract a wide range of talent from different parts of the city.

- ▲ ±6,097 Office/Retail Building
- ▲ Zoned C-2
- ▲ Built in 1989
- ▲ 111-37-070A Parcel ID
- ▲ 16 Private Parking Spaces
- ▲ Freestanding mixed-used building
- ▲ Ideal as flex mix office and production area
- ▲ Perfect for a variety of businesses
- ▲ Visible monument signage on McDowell Rd
- ▲ Easily accessible from I-10, I-17 and SR-51





FOR SALE
319 E McDowell Rd | Phoenix, AZ



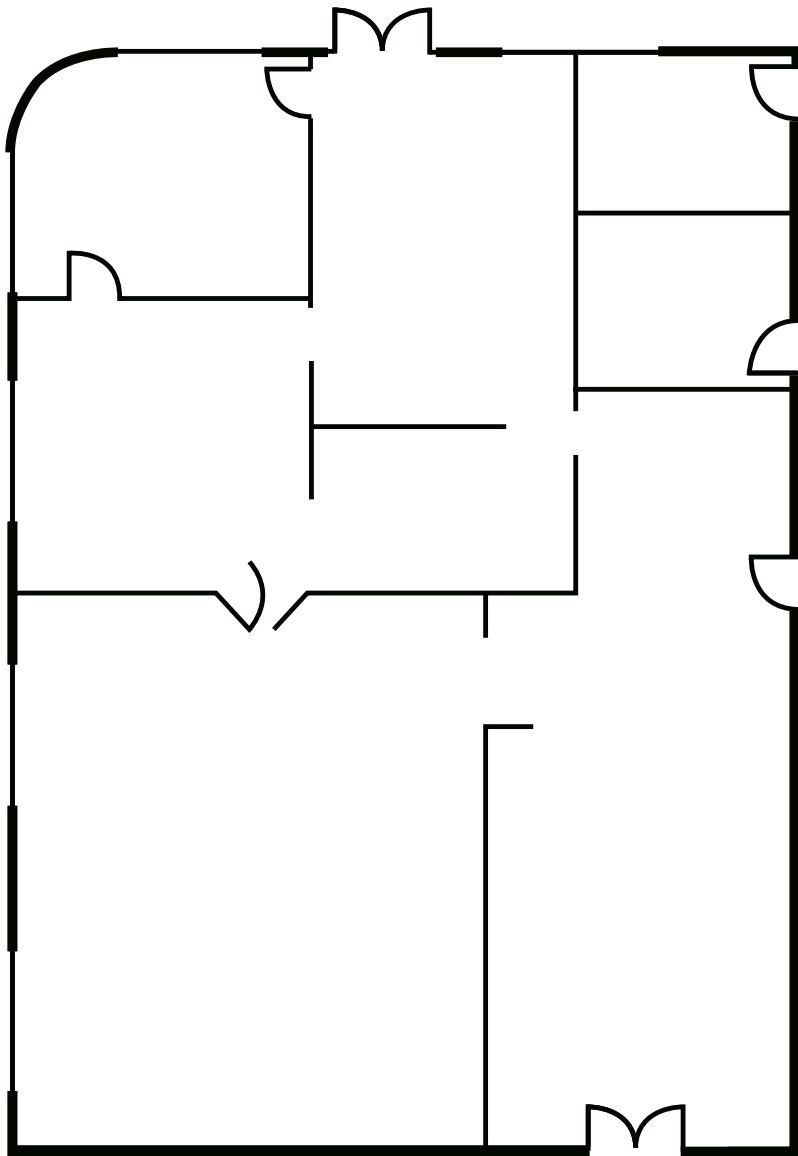


FOR SALE

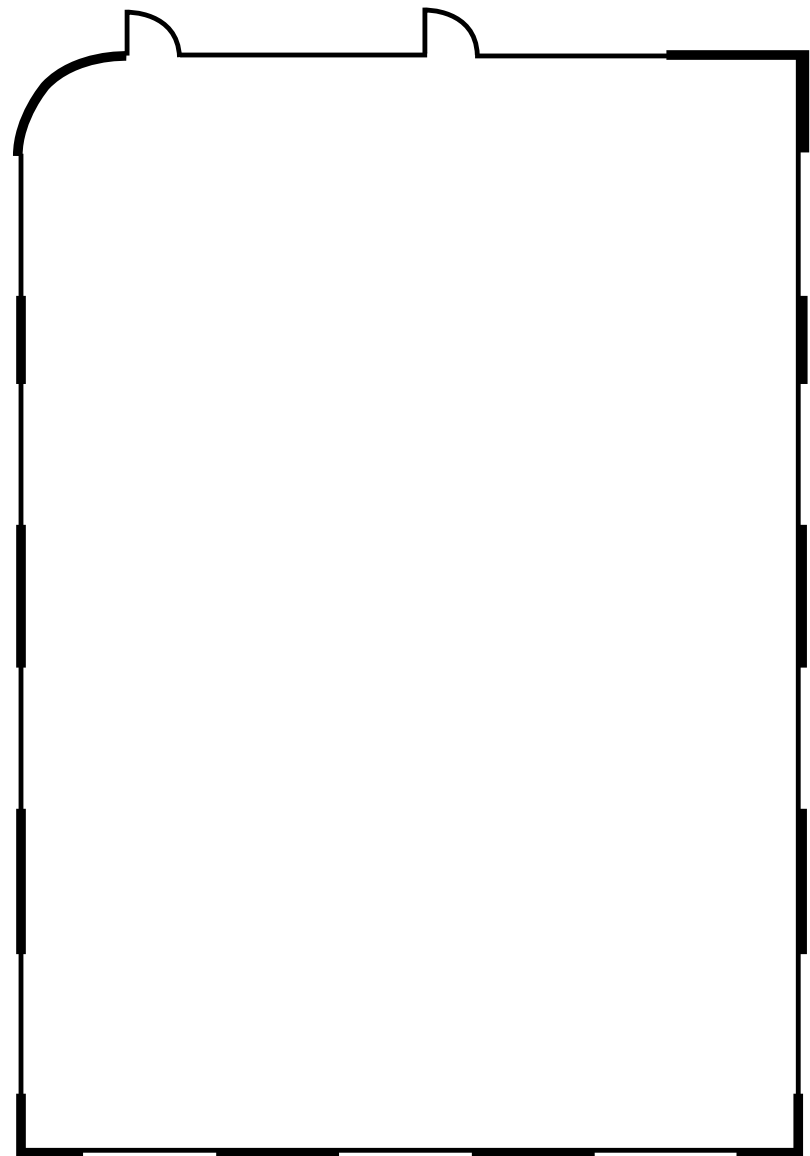




Floor Plans

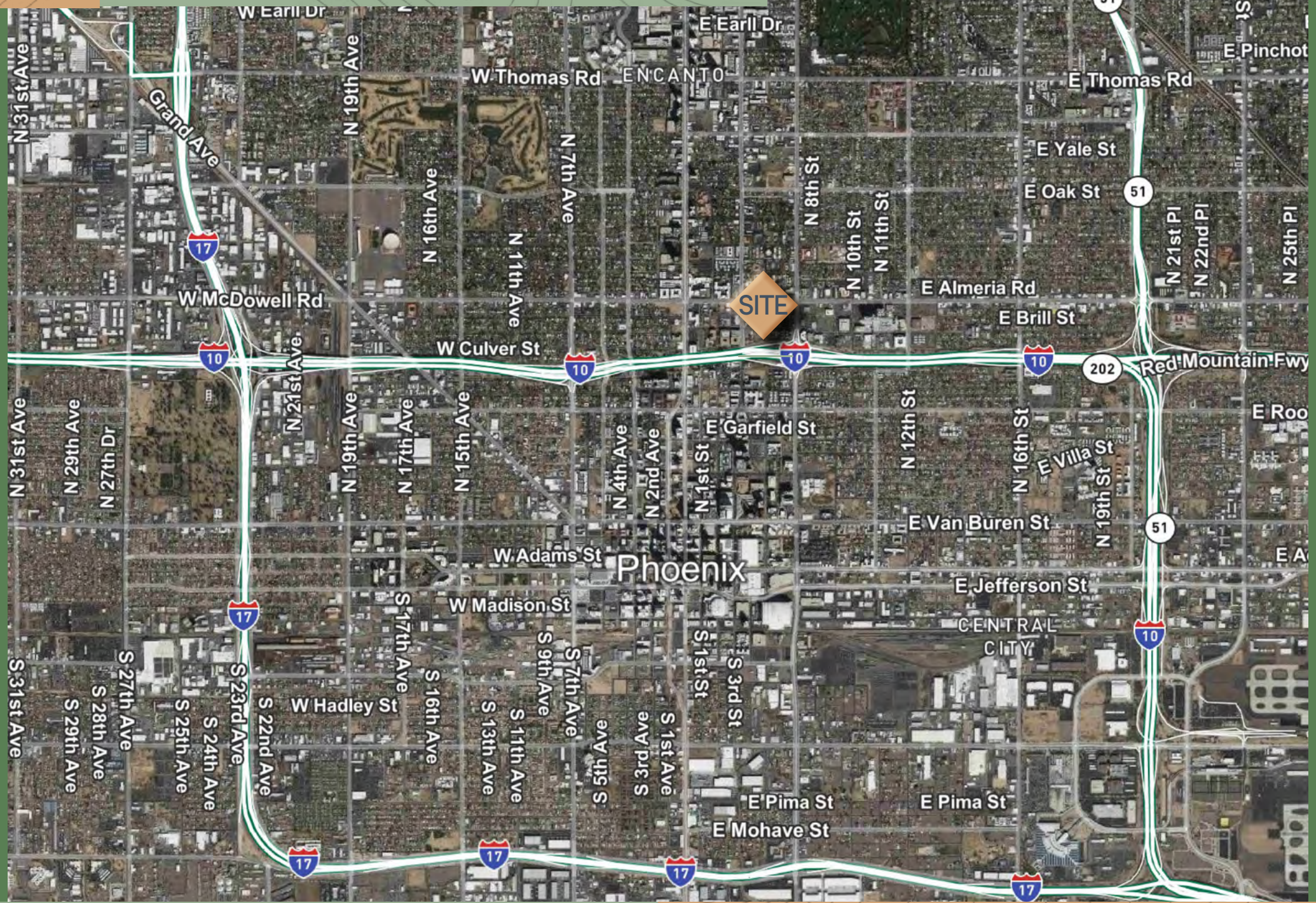


1ST FLOOR



2ND FLOOR

Area Map



FOR SALE

319 E McDowell Rd | Phoenix, AZ 85004



CONTACTS

JOE PEQUENO

+1 602 735 5613

joe.pequeno@cbre.com

JAMIE SWIRTZ

+1 602 735 5630

jamie.swirtz@cbre.com

© 2024 CBRE, Inc. All rights reserved. This information has been obtained from sources believed reliable but has not been verified for accuracy or completeness. CBRE, Inc. makes no guarantee, representation or warranty and accepts no responsibility or liability as to the accuracy, completeness, or reliability of the information contained herein. You should conduct a careful, independent investigation of the property and verify all information. Any reliance on this information is solely at your own risk. CBRE and the CBRE logo are service marks of CBRE, Inc. All other marks displayed on this document are the property of their respective owners, and the use of such marks does not imply any affiliation with or endorsement of CBRE. Photos herein are the property of their respective owners. Use of these images without the express written consent of the owner is prohibited.

CBRE