

**FOR SUBLEASE**

1021 CREWS COMMERCE DR, ORLANDO, FL 32837

**CBRE**

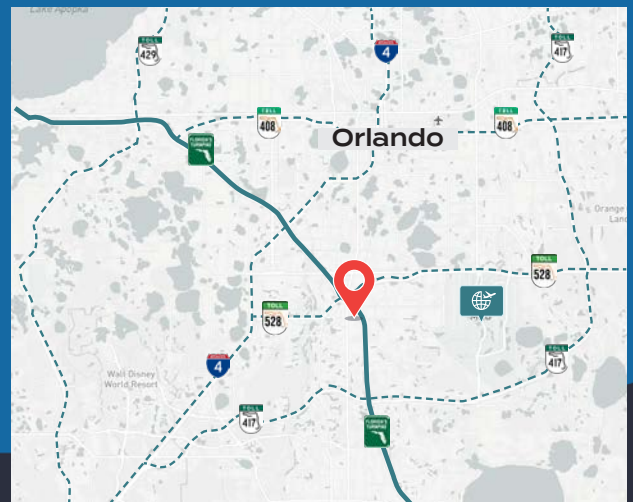


**SUBLEASE TERM 12/31/2031**

# ±127,344 SF Warehouse

**WAREHOUSE & AIR CONDITIONED SHOWROOM**

The property is strategically positioned in South Orlando with prominent visibility and immediate access to the Florida Turnpike, offering exceptional exposure and direct regional connectivity. Its location near the Orlando International Airport further enhances accessibility, with additional routes via S. Highway 441, Taft Vineland Road, and the 528/Beachline interchange. Surrounded by a balanced mix of business and lifestyle amenities, the area provides an ideal setting for professionals seeking convenience, connectivity, and a dynamic work-life environment.



**DAVID MURPHY**

Vice Chairman  
407 404 5020  
david.murphy@cbre.com

**MONICA WONUS**

Executive Vice President  
407 404 5042  
monica.wonus@cbre.com

**GABY GISSY**

Associate  
407 404 5012  
gaby.gissy@cbre.com

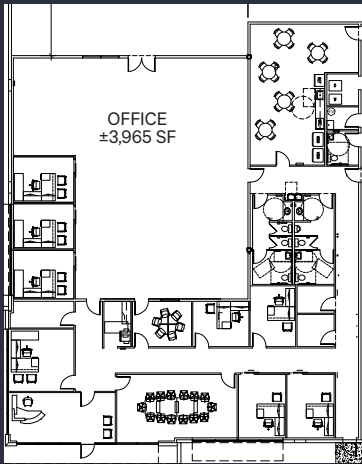
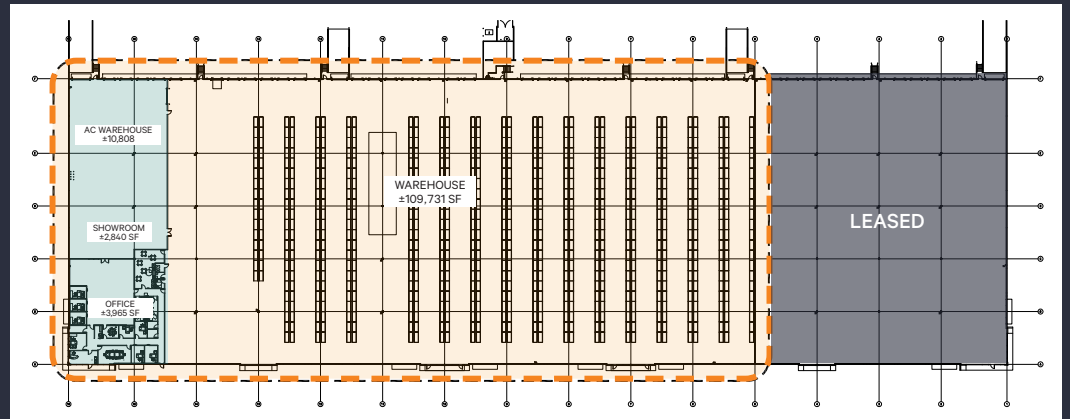
**SHARIF BAKER**

Associate  
407 404 5018  
sharif.baker@cbre.com

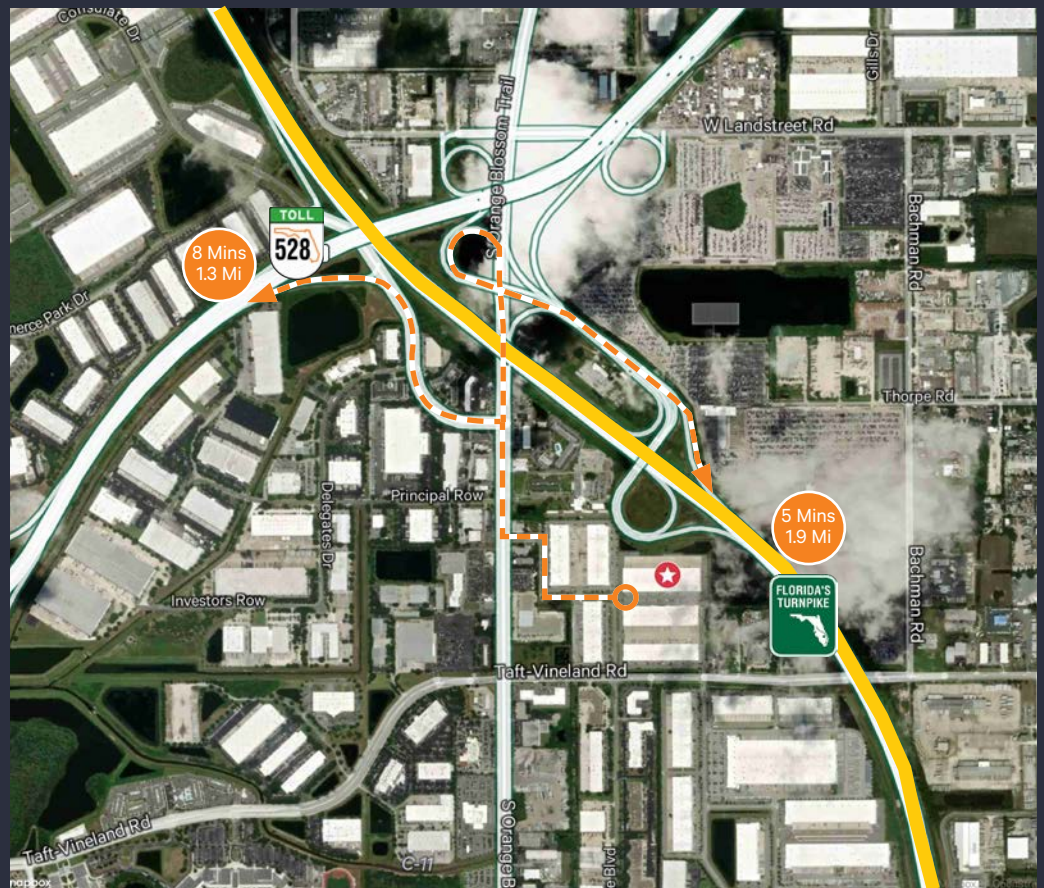


## PROPERTY HIGHLIGHTS

AVAILABLE	127,344 SF TOTAL
WAREHOUSE	±109,731 SF
AC WAREHOUSE	±10,808 SF <b>AIR CONDITIONED</b>
SHOWROOM	±2,840 SF Clear Height 30.5' <b>AIR CONDITIONED</b>
OFFICE SPACE	±3,965 SF <b>AIR CONDITIONED</b>
CLEAR HEIGHT	30.5'
TRAILER PARKING	40
DOCK HIGH DOORS	29
PIT LEVELERS	2
RAMP DOORS	3 12'x14' Automatic
POWER	1,025 Amps
LIGHTING	LED lights
RESTROOMS	2 - 3 Stalls each
EXTRAS	Exhaust fans



## PRIME EXPOSURE AVAILABLE ON THE FLORIDA TURNPIKE



### SITE ACCESS

FROM YOUR TRUCK COURT TO THE FLORIDA TURNPIKE IN MINUTES

DIRECT ORANGE BLOSSOM TRAIL ACCESS

TWO TAFT VINELAND ACCESS POINTS

**CBRE**