

FOR SALE



200 GREENFIELD DR, STE A, TIFFIN

\$325,000

Exceptional commercial flex space right off of I80. Two 14' OH doors, 16' side walls, ADA restroom, floor drain, radiant heat & 200 amp panel. Like new condition, perfect for a small business owner with easy access to the entire Corridor. May be combined with adjacent unit with 1560 SF. For Lease in separate listing for \$2,950 per mo gross.

Price:

\$325,000

Zoning:

M2

Total SqFt:

2520 SQFT

Traffic Count:

Visible by 2,340 cars on S Roberts Ferry Rd per day

Directions:

From Tiffin and I-80 on and off ramps south on S Roberts Ferry Rd, east on Greenfield Dr.

Information deemed reliable, but not guaranteed.

Jeff Edberg, CCIM, SIOR

Jeff Edberg Team

📞 319-331-6187

✉️ Jeff@icrealestate.com

🌐 www.icrealestate.com

Licensed to sell real estate in the State of Iowa

Carmen Krueger, Realtor®

Jeff Edberg Team

📞 319-330-4927

✉️ carmen@icrealestate.com

🌐 www.icrealestate.com

Licensed to sell real estate in the State of Iowa

LKR
LEPIC-KROEGER, REALTORS®

2346 Mormon Trek Blvd, Iowa City, IA 52246

200 GREENFIELD DR, STE A, TIFFIN
\$325,000

FOR SALE



Jeff Edberg, CCIM, SIOR

Jeff Edberg Team

📞 319-331-6187

✉️ Jeff@icrealestate.com

🌐 www.icrealestate.com

Licensed to sell real estate in the State of Iowa

Carmen Krueger, Realtor®

Jeff Edberg Team

📞 319-330-4927

✉️ carmen@icrealestate.com

🌐 www.icrealestate.com

Licensed to sell real estate in the State of Iowa

LKR
LEPIC-KROEGER, REALTORS®

2346 Mormon Trek Blvd, Iowa City, IA 52246

200 GREENFIELD DR, STE A, TIFFIN
\$325,000

FOR SALE



For illustration purposes only

Jeff Edberg, CCIM, SIOR

Jeff Edberg Team

📞 319-331-6187

✉ Jeff@icrealestate.com

🌐 www.icrealestate.com

Licensed to sell real estate in the State of Iowa

Carmen Krueger, Realtor®

Jeff Edberg Team

📞 319-330-4927

✉ carmen@icrealestate.com

🌐 www.icrealestate.com

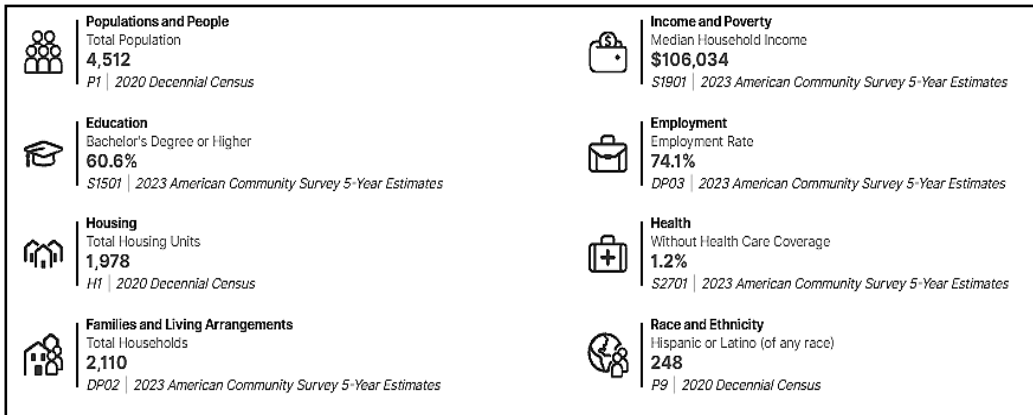
Licensed to sell real estate in the State of Iowa

LKR
LEPIC-KROEGER, REALTORS®

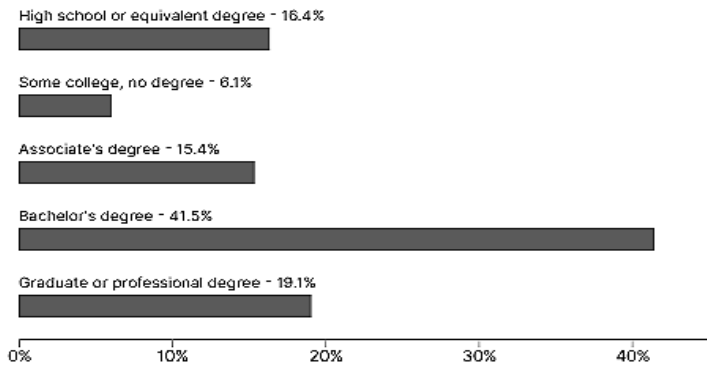
2346 Mormon Trek Blvd, Iowa City, IA 52246

200 GREENFIELD DR, STE A, TIFFIN
\$325,000

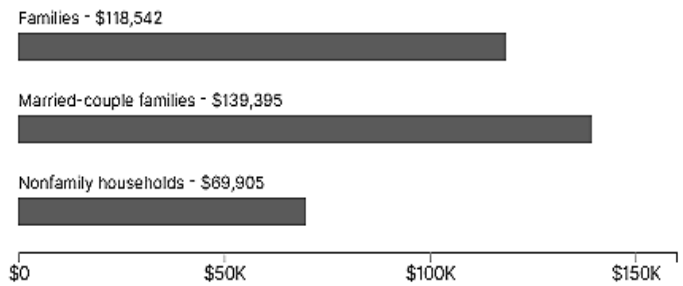
FOR SALE



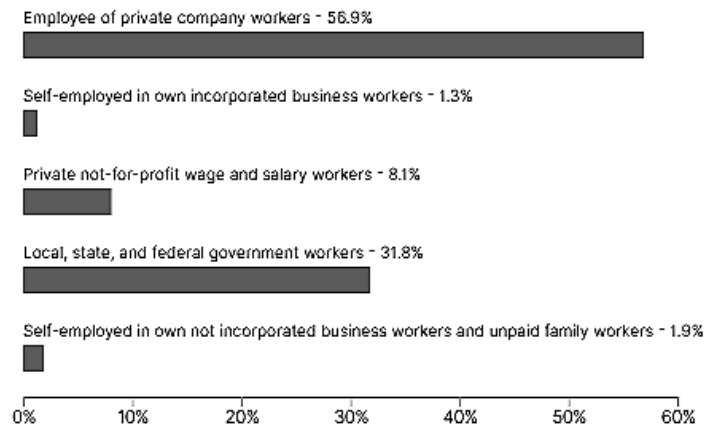
Education Attainment (Population 25 Years and Older) in Tiffin city, Iowa



Median Income by Types of Families in Tiffin city, Iowa

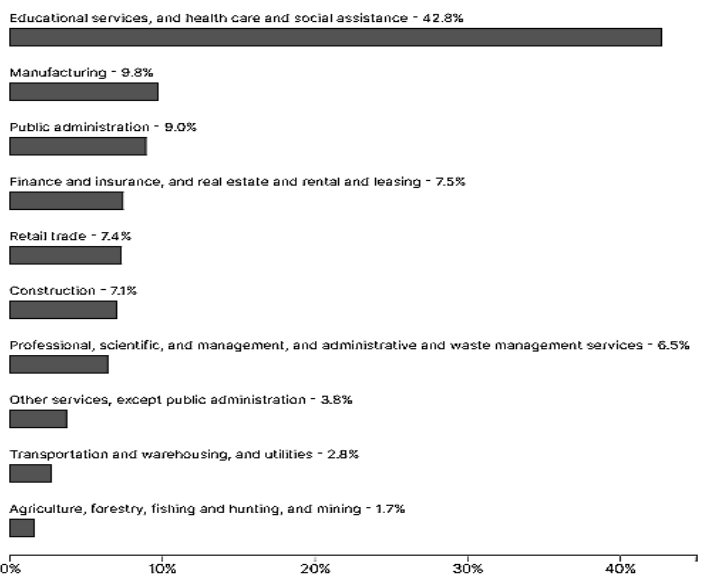


Class of Worker in Tiffin city, Iowa



Industry

Industry for the Civilian Employed Population 16 Years and O... in Tiffin city, Iowa



United States®
Census
Bureau

Jeff Edberg, CCIM, SIOR

Jeff Edberg Team

📞 319-331-6187

✉️ Jeff@icrealestate.com

🌐 www.icrealestate.com

Licensed to sell real estate in the State of Iowa

Carmen Krueger, Realtor®

Jeff Edberg Team

📞 319-330-4927

✉️ carmen@icrealestate.com

🌐 www.icrealestate.com

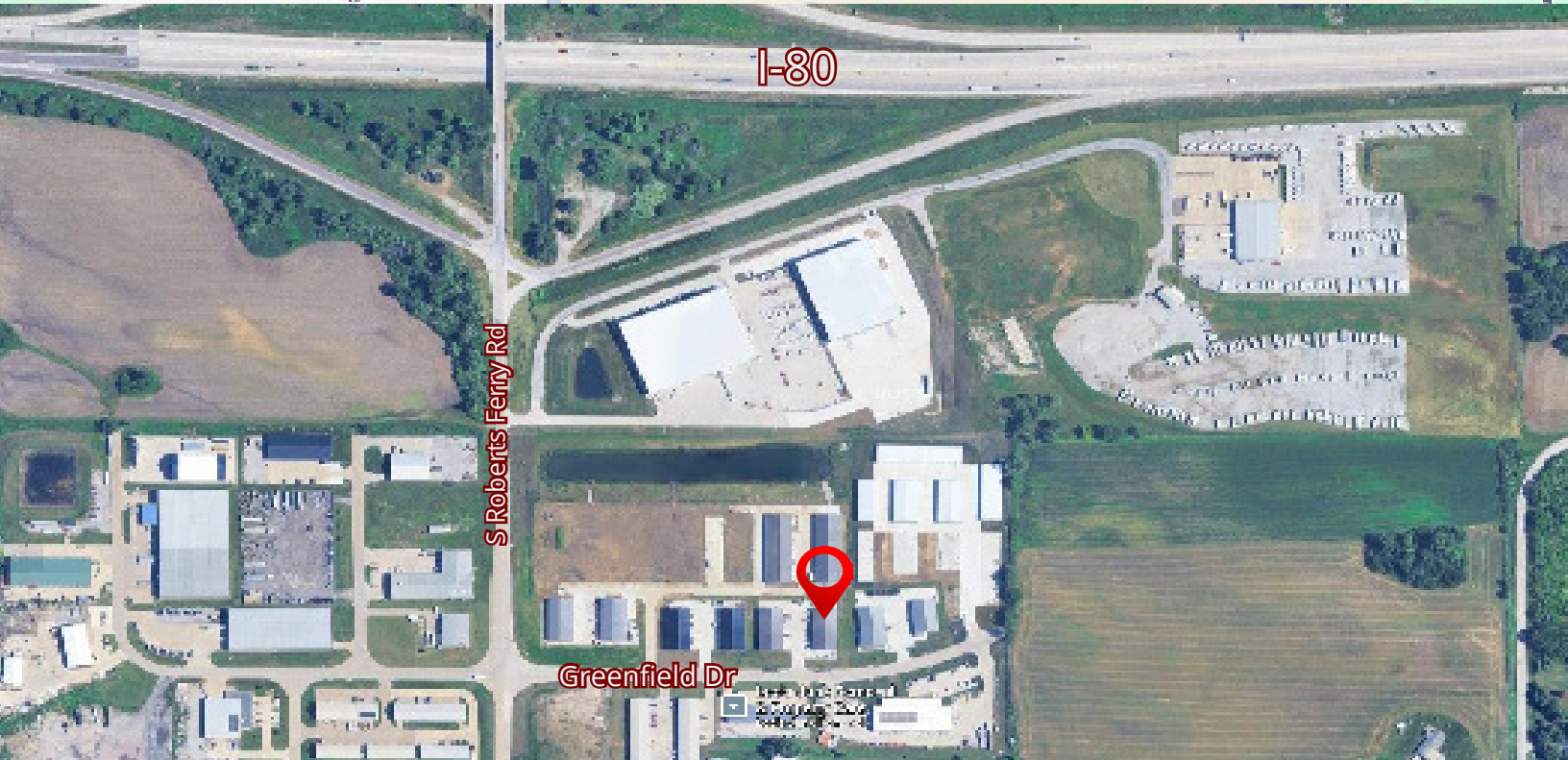
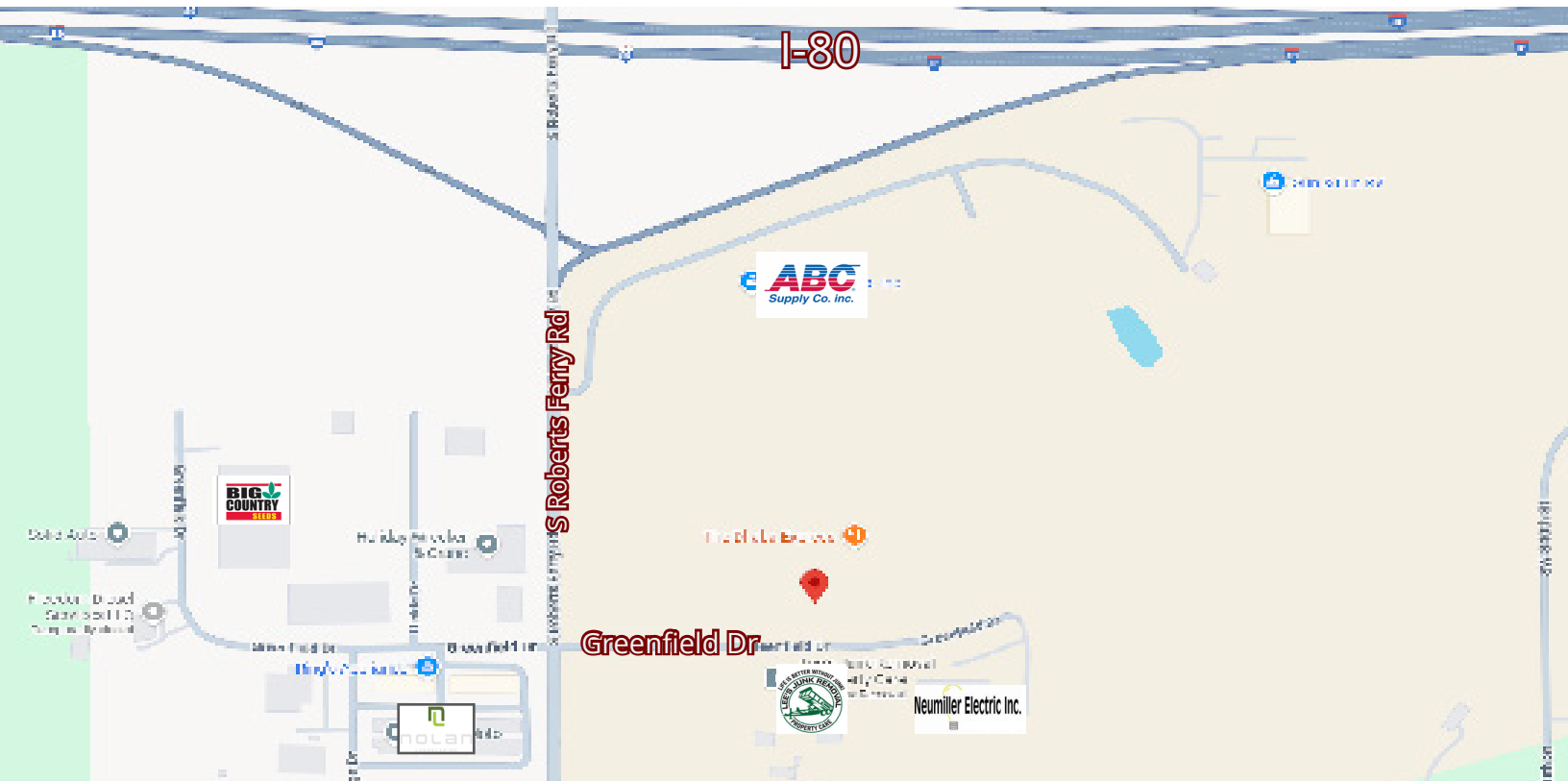
Licensed to sell real estate in the State of Iowa

LKR
LEPIC-KROEGER, REALTORS®

2346 Mormon Trek Blvd, Iowa City, IA 52246

200 GREENFIELD DR, STE A, TIFFIN
\$325,000

FOR SALE



Jeff Edberg, CCIM, SIOR

Jeff Edberg Team

📞 319-331-6187

✉️ Jeff@icrealestate.com

🌐 www.icrealestate.com

Licensed to sell real estate in the State of Iowa

Carmen Krueger, Realtor®

Jeff Edberg Team

📞 319-330-4927

✉️ carmen@icrealestate.com

🌐 www.icrealestate.com

Licensed to sell real estate in the State of Iowa

LKR
LEPIC-KROEGER, REALTORS®

2346 Mormon Trek Blvd, Iowa City, IA 52246