

# TOMBALL PKY BUSINESS CENTER

22955 TOMBALL PARKWAY, TOMBALL, TX 77377



**NORTHWEST HOUSTON SUBMARKET**



**GREAT ACCESS TO TOMBALL  
PARKWAY / TX-249**



**18'- 23' CLEAR HEIGHT**



**TENANT-CONTROLLED HVAC**



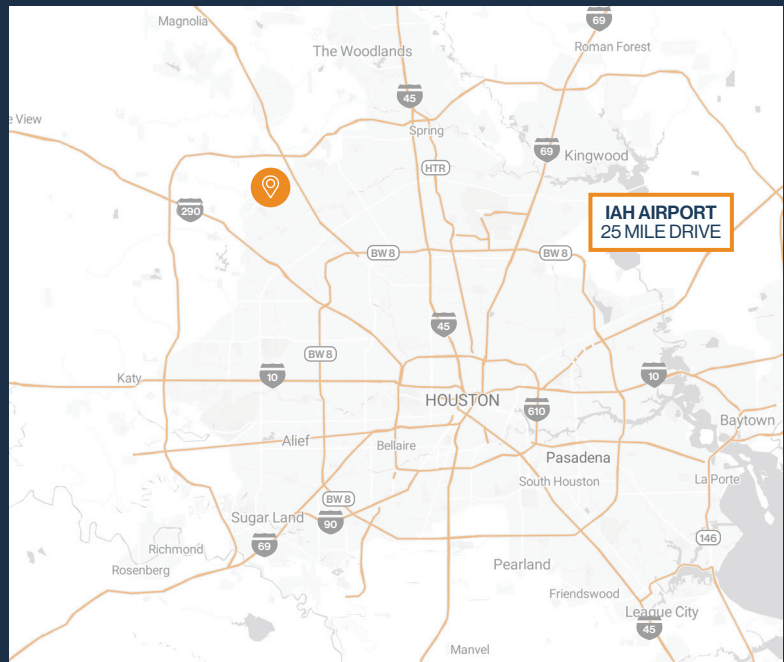
**18-WHEELER ACCESSIBLE**



**12'X14' GRADE-LEVEL LOADING**



**2,533 SF - 5,276 SF SUITES  
AVAILABLE**



**RYAN YOUNG**



281.584.3320



ryan.young@fort-companies.com



**FORT**  
LEASING

This information is deemed reliable, however, Fort makes no guarantee, warranties, or representations as to the completeness or accuracy thereof.

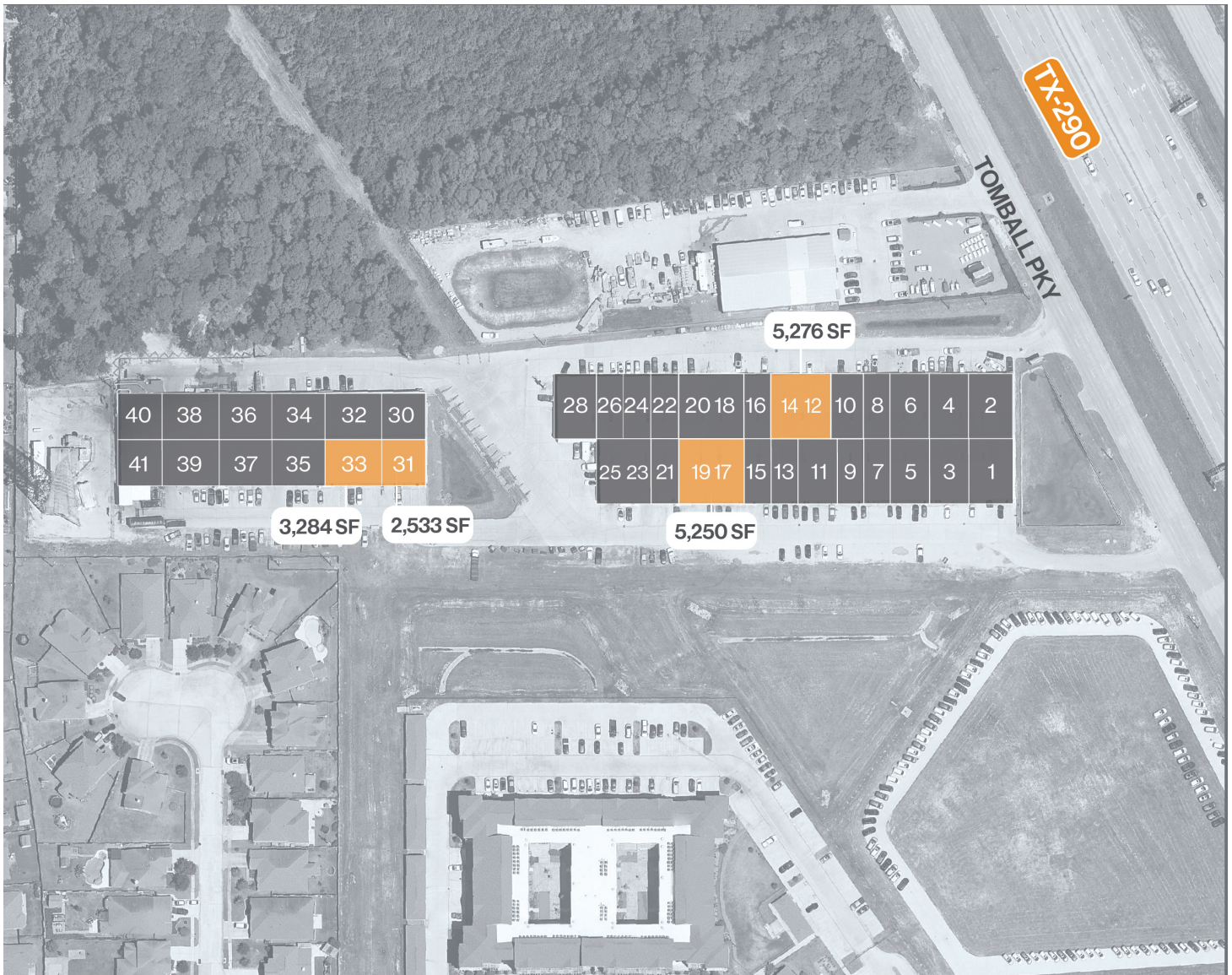


**FORT**  
LEASING

# TOMBALL PARKWAY BUSINESS CENTER

22955 TOMBALL PKY  
TOMBALL, TEXAS 77375

## SITE PLAN



**RYAN YOUNG**  
281.584.3320  
ryan.young@fort-companies.com

This information is deemed reliable, however, Fort makes no guarantee, warranties, or representations as to the completeness or accuracy thereof.



**FORT**  
LEASING

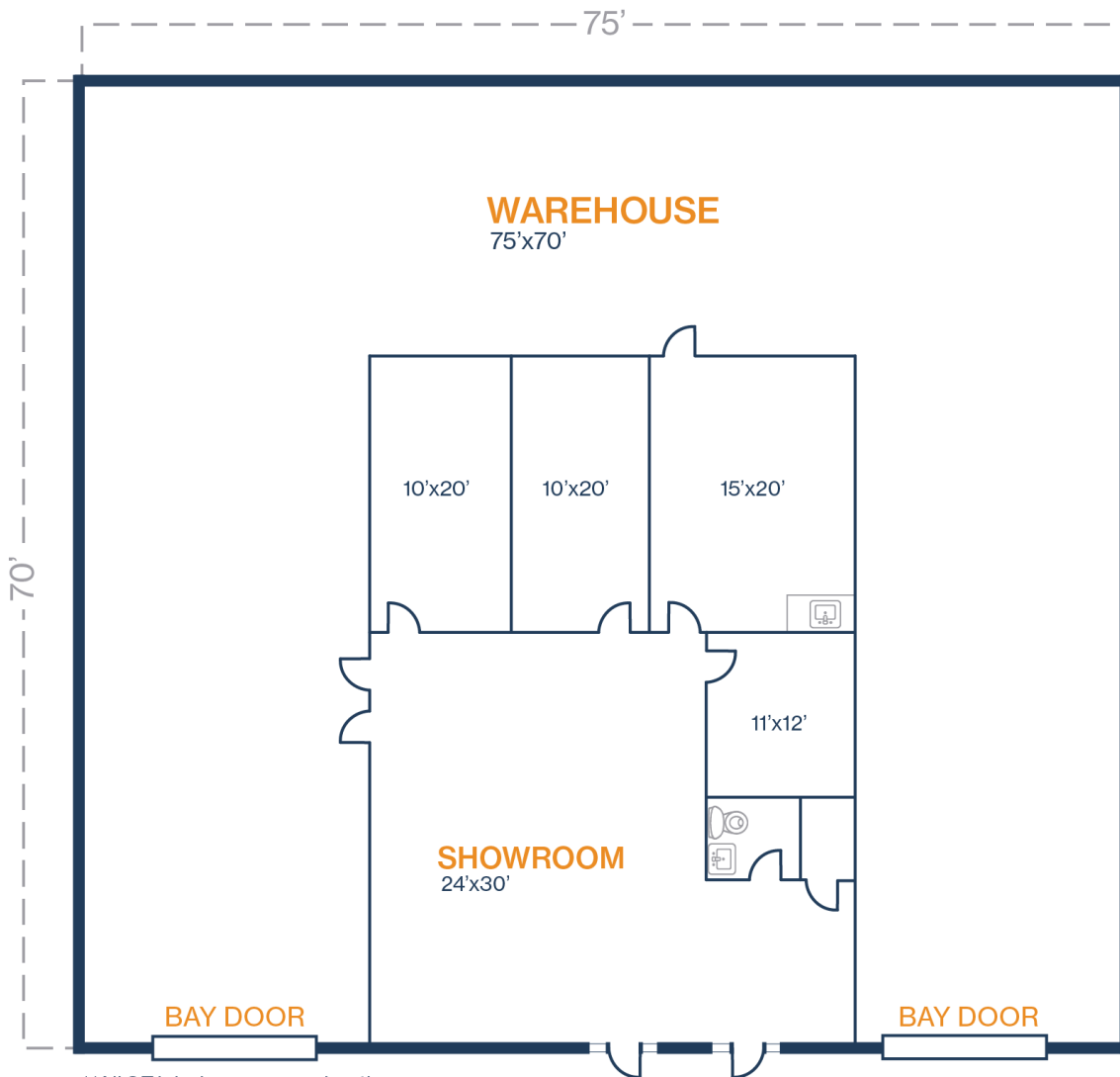
# TOMBALL PARKWAY BUSINESS CENTER

22955 TOMBALL PKY  
TOMBALL, TEXAS 77375

## UNIT 12 & 14 – 5,276 SF

1,750 SF OFFICE / 3,526 SF WAREHOUSE

- (2) 12' x 14' Grade-Level Doors



\*\*All SF labels are approximations



**FORT**  
LEASING

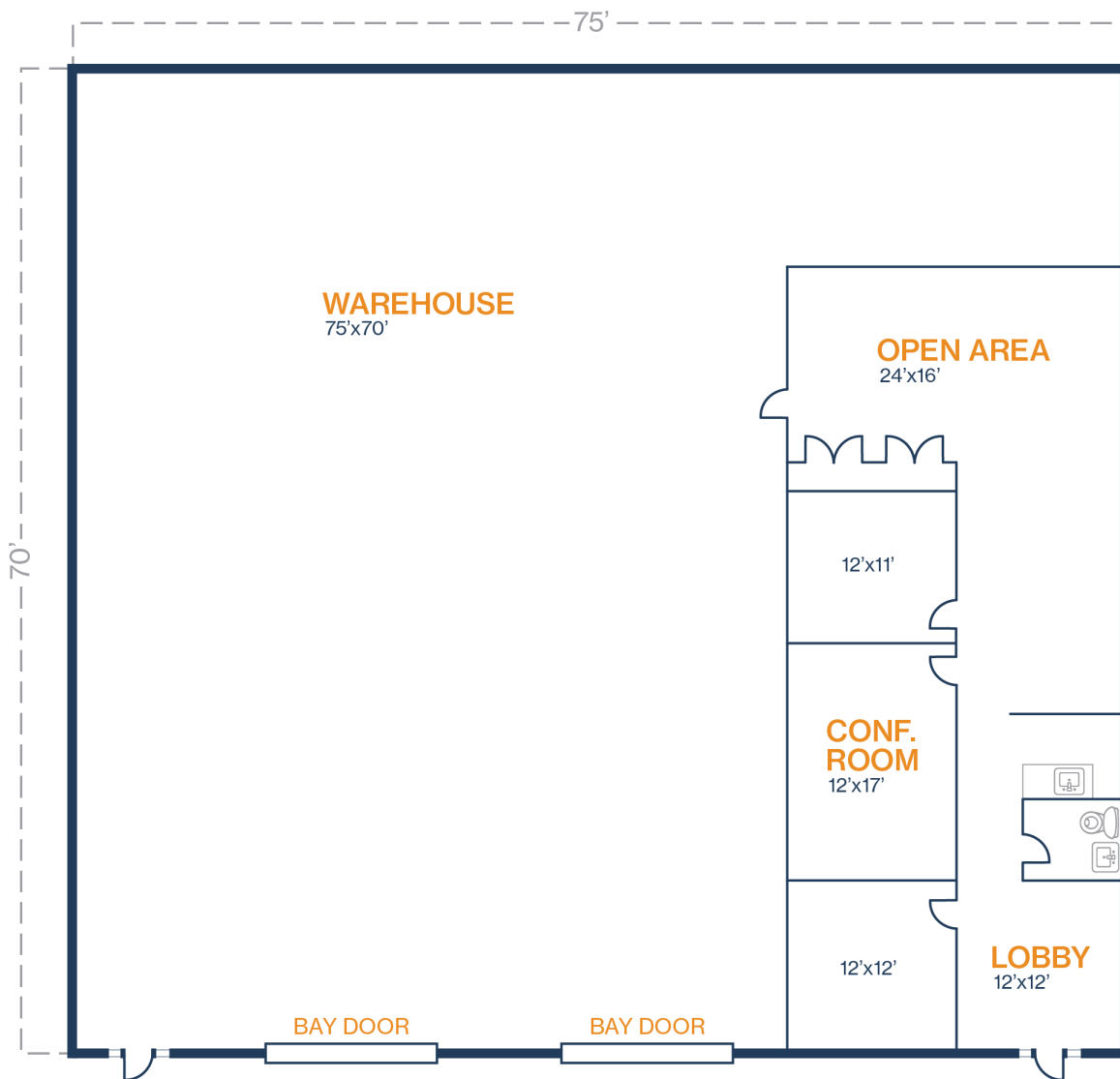
# TOMBALL PARKWAY BUSINESS CENTER

22955 TOMBALL PKY  
TOMBALL, TEXAS 77375

## UNIT 17 & 19 – 5,250 SF

1,350 SF OFFICE / 3,900 SF WAREHOUSE

- (2) 12' x 14' Grade-Level Doors



\*\*All SF labels are approximations

**RYAN YOUNG**  
281.584.3320  
ryan.young@fort-companies.com

This information is deemed reliable, however, Fort makes no guarantee, warranties, or representations as to the completeness or accuracy thereof.



**FORT**  
LEASING

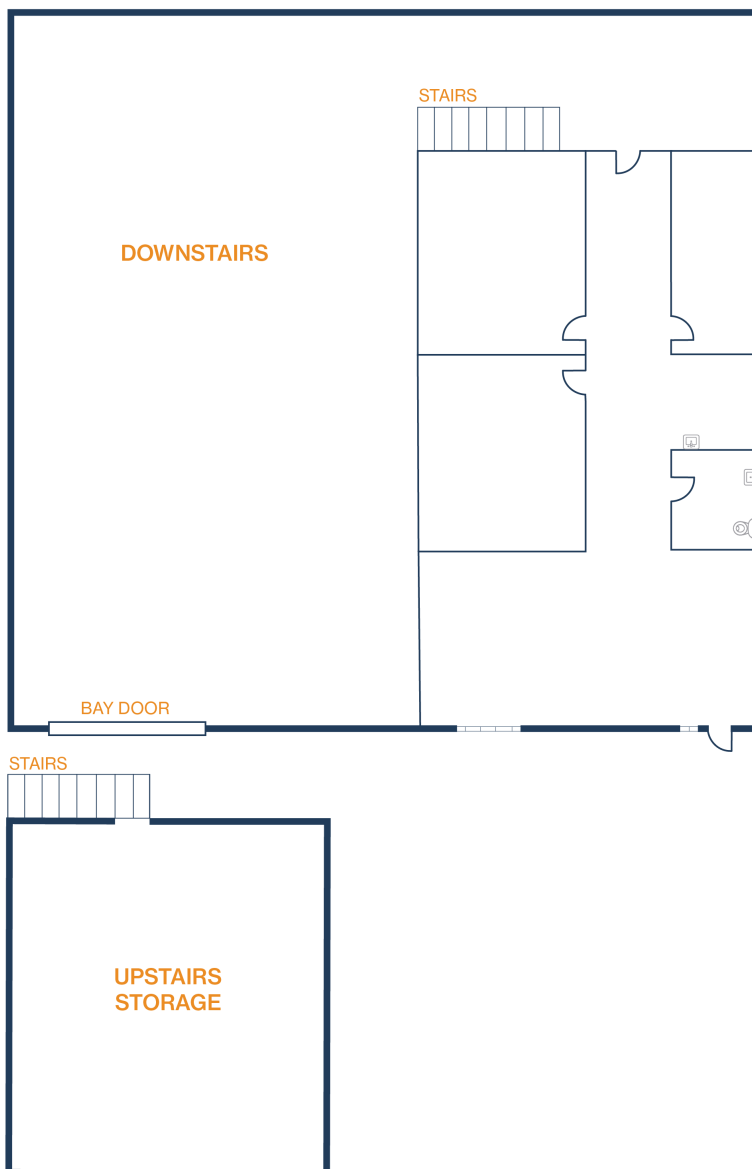
# TOMBALL PARKWAY BUSINESS CENTER

22955 TOMBALL PKY  
TOMBALL, TEXAS 77375

## UNIT 31 – 2,533 SF

506 SF OFFICE / 2,027 SF WAREHOUSE

- (1) 12' x 14' Grade-Level Door



**RYAN YOUNG**  
281.584.3320  
ryan.young@fort-companies.com

This information is deemed reliable,  
however, Fort makes no guarantee,  
warranties, or representations as to the  
completeness or accuracy thereof.



**FORT**  
LEASING

# TOMBALL PARKWAY BUSINESS CENTER

22955 TOMBALL PKY  
TOMBALL, TEXAS 77375

## UNIT 33 – 3,284 SF

1,700 SF OFFICE / 1,584 SF WAREHOUSE

- (1) 12' x 14' Grade-Level Door

