

# GWINNETT 316

NORTHEAST ATLANTA  
GA-316/LAWRENCEVILLE

625 Old Norcross Road  
Lawrenceville, GA 30046



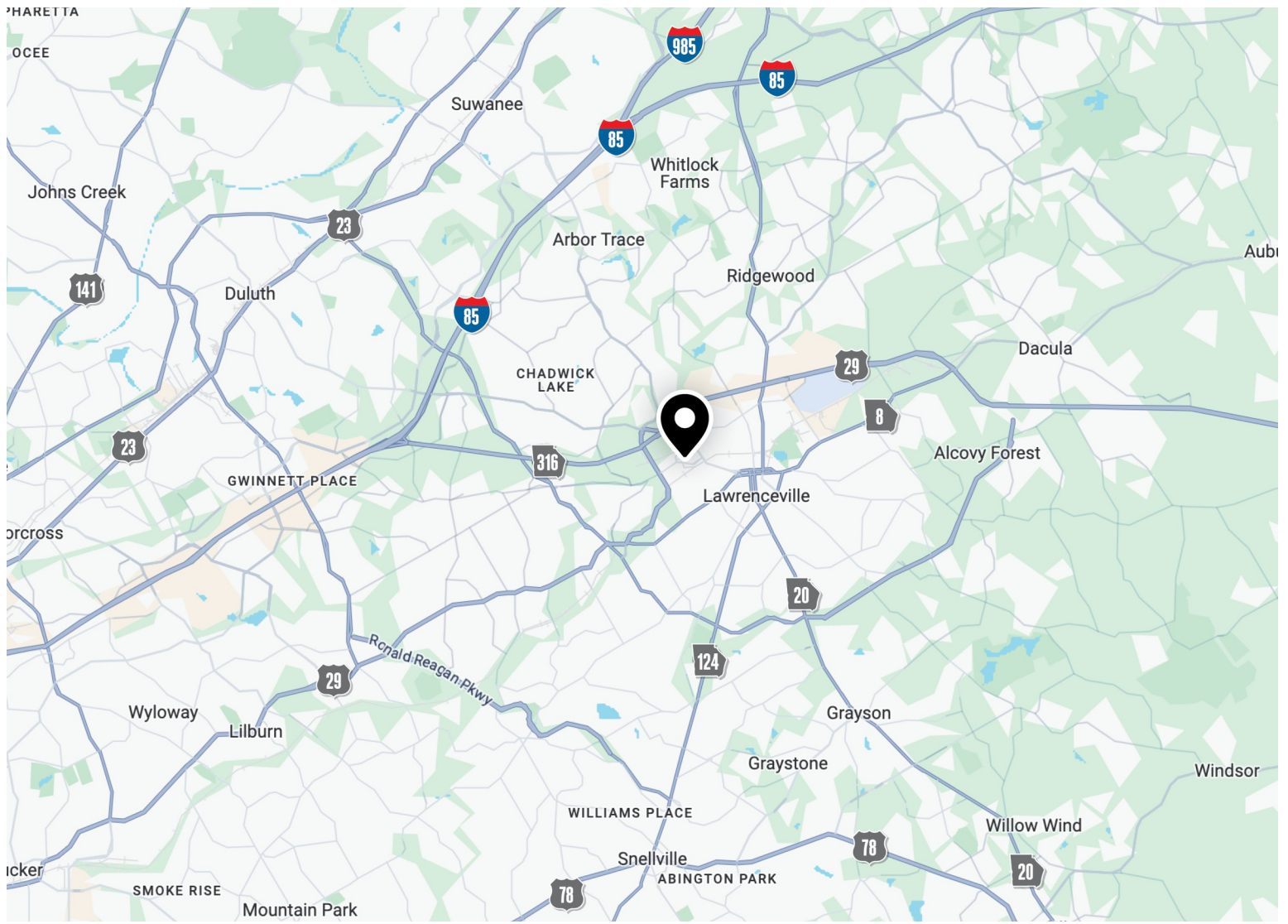
FOR LEASE

64,714 SF

SUITE E

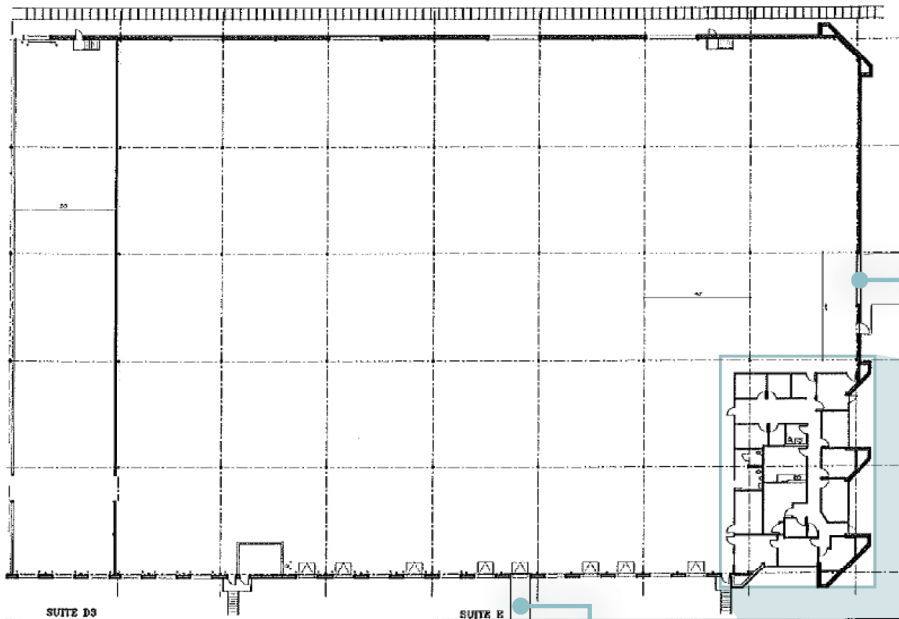


LEASED BY **NAI**BrannenGoddard

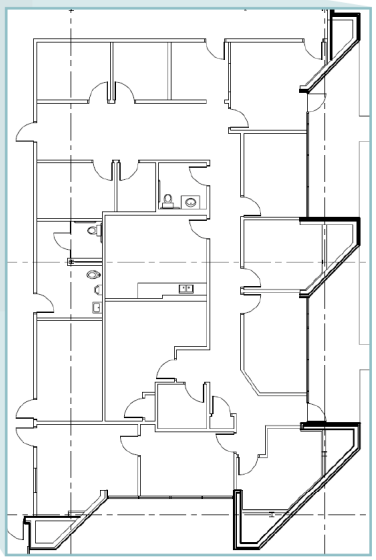


## SPECIFICATIONS

Building Size	178,904 SF	Drive-In Doors	2 (1 oversized grade-level 18'W x 14'H)
Available	64,714 SF	Sprinkler	Non-ESFR
Office	3,100 SF	Auto Parking	1.00/1,000 SF
Clear Height	24' minimum	Truck Court	100' deep
Column Spacing	40' wide x 40' deep	Outside Storage	±0.45 acres fenced
Dock Doors	17 (9 mechanical pit levelers)	Zoning	Heavy Manufacturing (HM)
Lighting	LED		

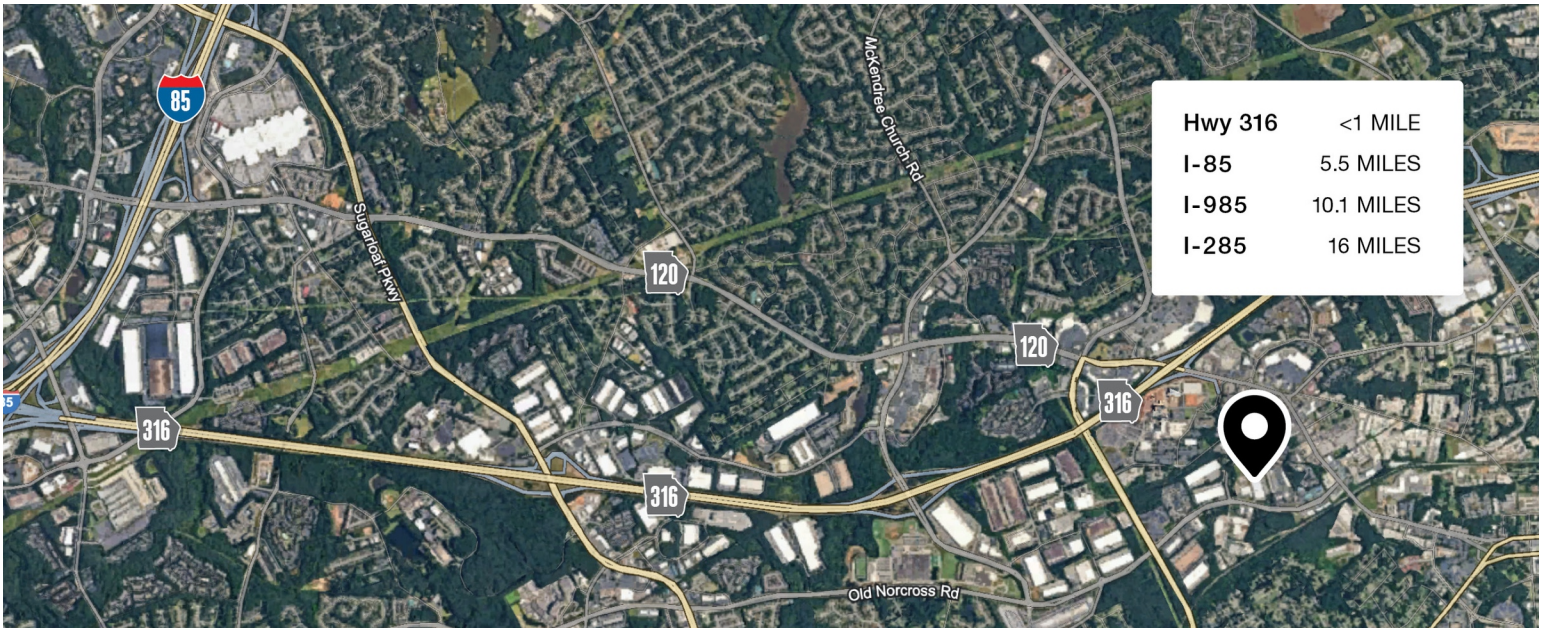


**OVERSIZED  
GRADE-LEVEL DOOR**  
18' W X 14' H



**DRIVE-IN RAMP**

<b>SUITE 300</b>	
Warehouse SF	61,614 SF
Office SF	3,100 SF
<b>Total SF</b>	<b>64,714 SF</b>



Hwy 316	<1 MILE
I-85	5.5 MILES
I-985	10.1 MILES
I-285	16 MILES



**0.45 ACRES**  
FENCED OUTSIDE  
STORAGE



**SUITE E**  
64,714 SF

HURRICANE SHOALS RD, NW

OLD NORCROSS RD



# CONTACT INFORMATION

625 Old Norcross Road  
Lawrenceville, GA 30046

**Walker Adams**

wadams@naibg.com  
(404) 812-4066

**Charlie Adams**

cadams@naibg.com  
(404) 812-4037

This document is for informational purposes only and does not constitute an offer or acceptance of a lease. Any lease agreement must be in writing and signed by the landlord. No representations or warranties are made except as expressly stated in a signed lease. Information is provided "as is" and may be subject to errors or change without notice.

