

1307 & 1407 ALLEN DRIVE
TROY, MICHIGAN

INDUSTRIAL FOR LEASE
3,200 – 4,000 Square Feet Available



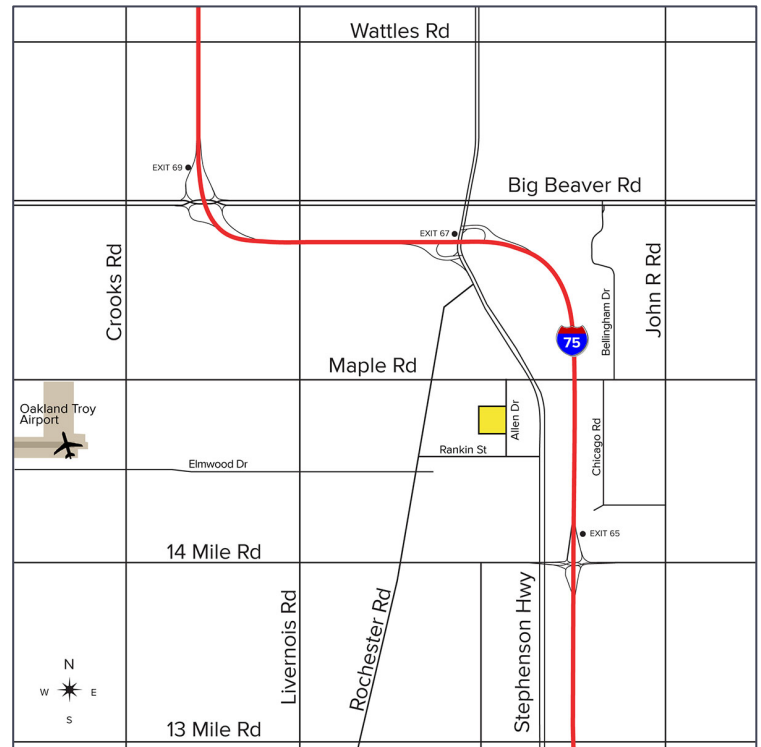
**SIGNATURE
ASSOCIATES**
KNOW SIGNATURE | KNOW RESULTS

TROY TRADE CENTER



PROPERTY FEATURES

- 3,200 – 4,000 square feet available
- 16' clear height
- Each unit has (1) overhead door
- One unit has (1) truckwell
- Professionally managed complex centrally located near I-75 between 14 Mile and Rochester Road
- Multiple office/shop configurations available and units have been recently renovated or can be finished to suit
- Completely renovated in 2020



For more information, please contact:

KRIS PAWLOWSKI
(248) 359 3801
kpawlowski@signatureassociates.com

JOHN DROZE
(248) 948 4191
jdroze@signatureassociates.com

SIGNATURE ASSOCIATES
One Towne Square, Suite 1200
Southfield, MI 48076
www.signatureassociates.com

1307 & 1407 Allen Drive - Troy, Michigan

Industrial For Lease

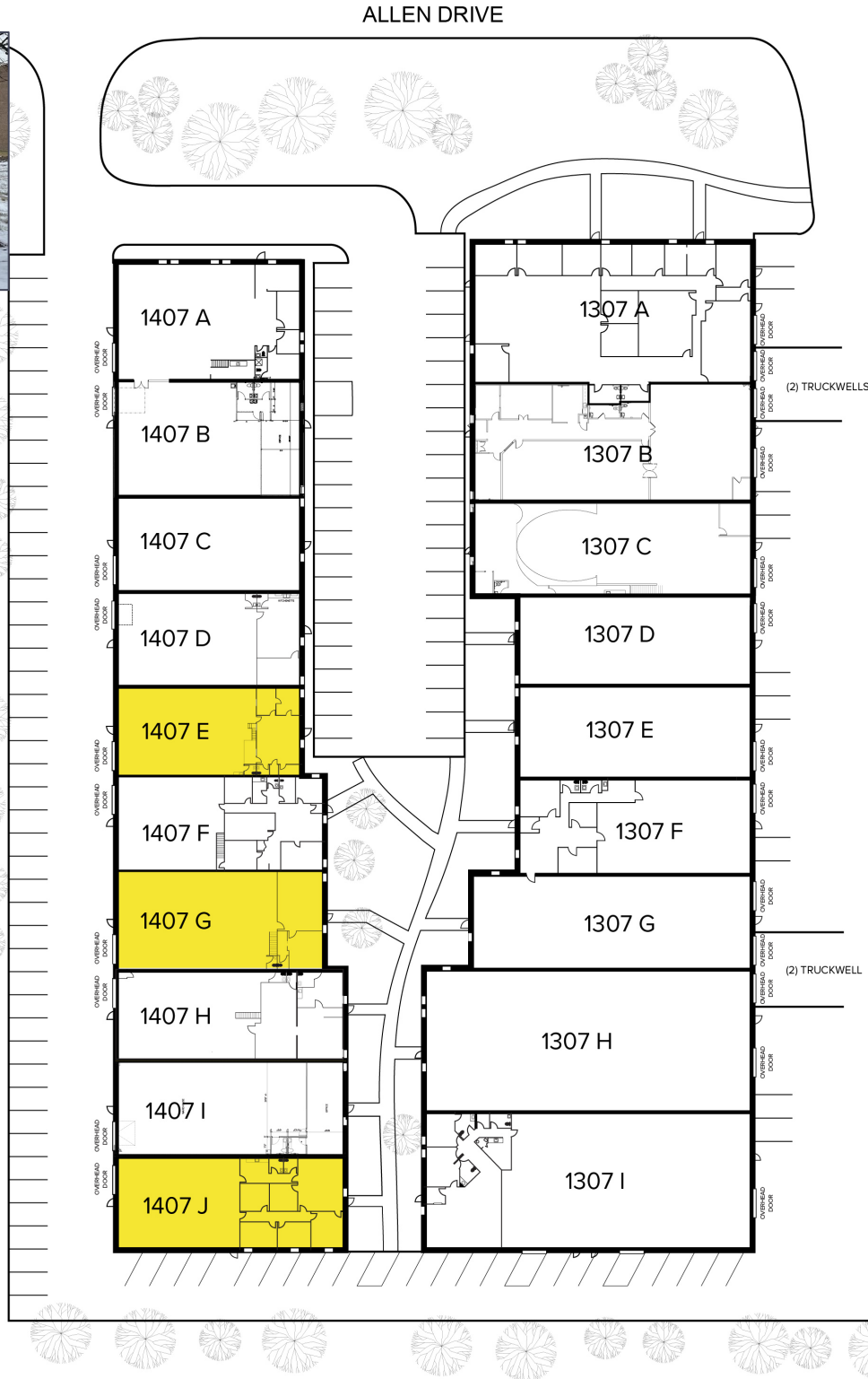
3,200 – 4,000
Square Feet
AVAILABLE

Site Plan



AVAILABILITY			
UNIT	TOTAL SF	OFFICE SF	RATE
1407 E	3,200	800	\$11.24 Gross
1407 G	3,600	900	\$11.24 Gross
1407 J	4,000	1,600	\$11.24 Gross

**Unit 1407 E Available June 2026



For more information, please contact:

KRIS PAWLOWSKI
(248) 359 3801
kpawlowski@signatureassociates.com

JOHN DROZE
(248) 948 4191
jdroze@signatureassociates.com

SIGNATURE ASSOCIATES
One Towne Square, Suite 1200
Southfield, MI 48076
www.signatureassociates.com

1307 & 1407 Allen Drive - Troy, Michigan

Industrial For Lease

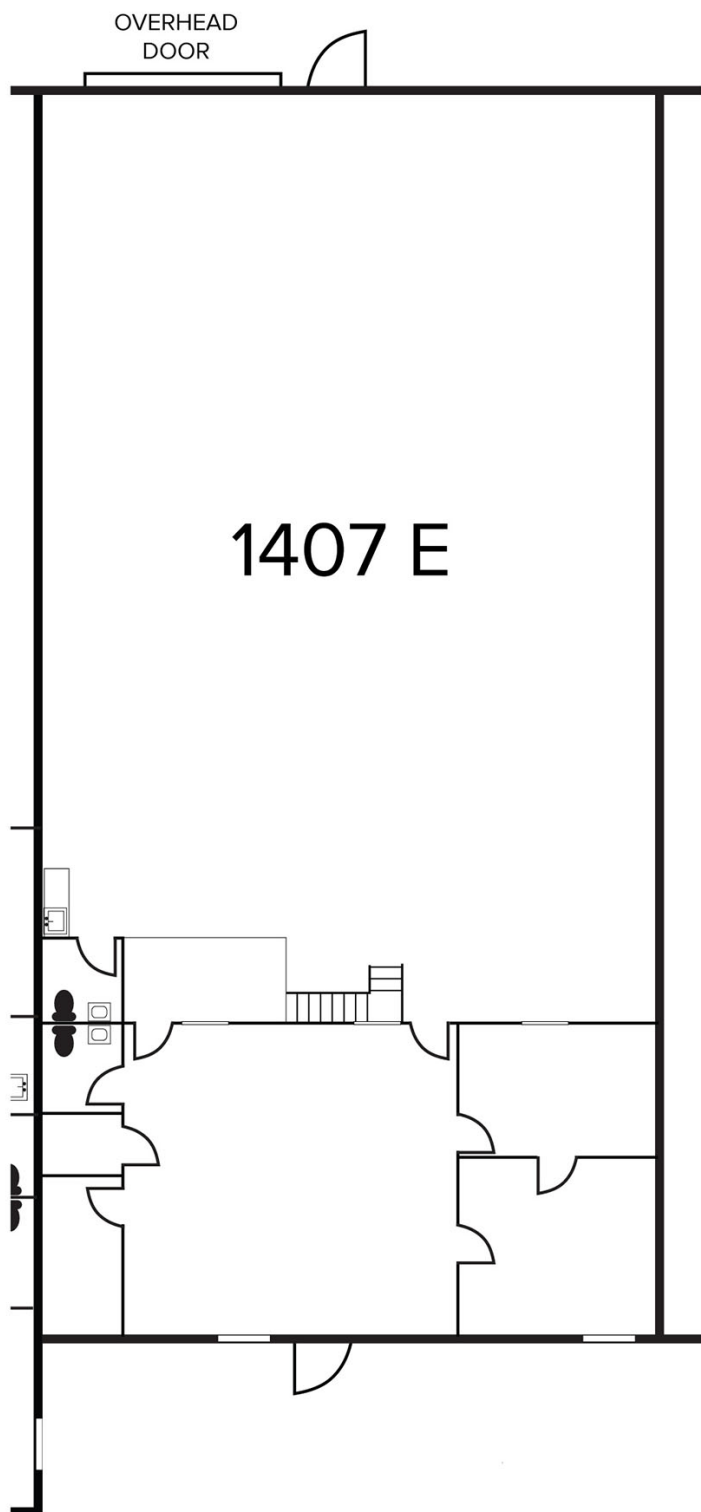
3,200 – 4,000
Square Feet
AVAILABLE

Proposed Floor Plan

AVAILABILITY

UNIT	TOTAL SF	OFFICE SF	RATE
1407 E	3,200	800	\$11.24 Gross

**Unit Available June 2026



For more information, please contact:

KRIS PAWLOWSKI
(248) 359 3801
kpawlowski@signatureassociates.com

JOHN DROZE
(248) 948 4191
jdroze@signatureassociates.com

SIGNATURE ASSOCIATES
One Towne Square, Suite 1200
Southfield, MI 48076
www.signatureassociates.com

1307 & 1407 Allen Drive - Troy, Michigan

Industrial For Lease

3,200 – 4,000
Square Feet
AVAILABLE

Interior Photos – Unit 1407 E



For more information, please contact:

KRIS PAWLOWSKI
(248) 359 3801
kpawlowski@signatureassociates.com

JOHN DROZE
(248) 948 4191
jdroze@signatureassociates.com

SIGNATURE ASSOCIATES
One Towne Square, Suite 1200
Southfield, MI 48076
www.signatureassociates.com

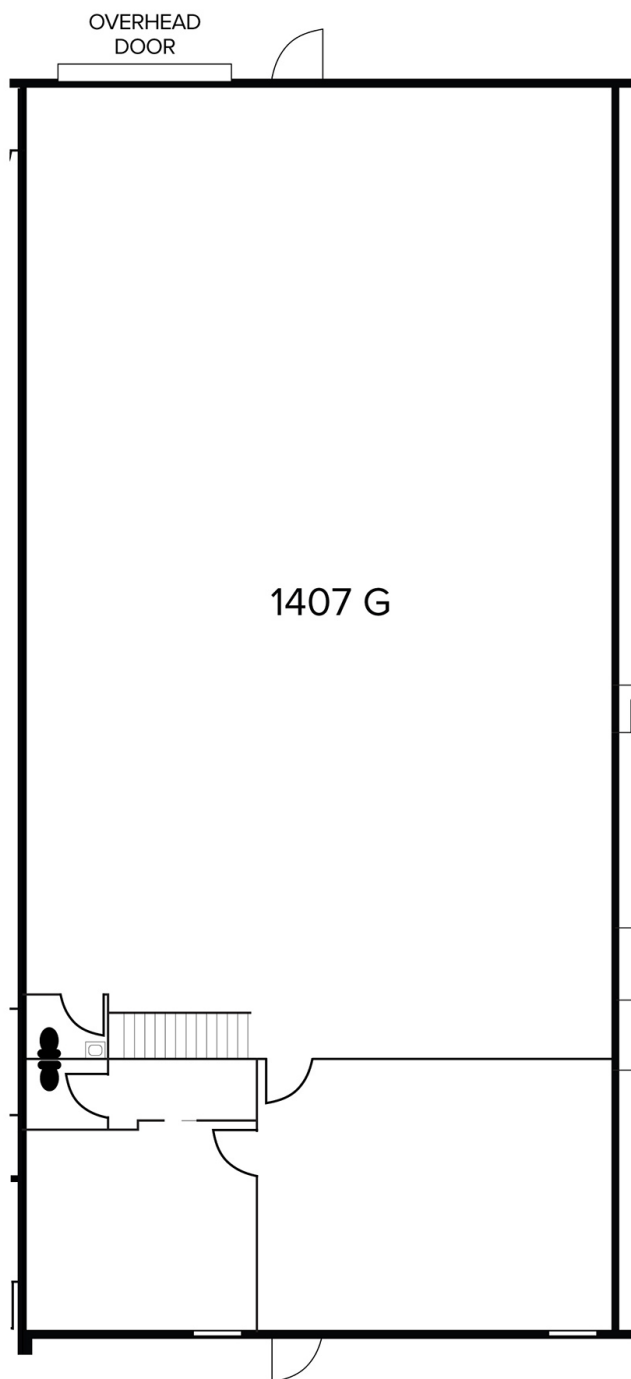
1307 & 1407 Allen Drive - Troy, Michigan

Industrial For Lease

3,200 – 4,000
Square Feet
AVAILABLE

Proposed Floor Plan

AVAILABILITY			
UNIT	TOTAL SF	OFFICE SF	RATE
1407 G	3,600	1,500	\$11.24 Gross



For more information, please contact:

KRIS PAWLOWSKI
(248) 359 3801
kpawlowski@signatureassociates.com

JOHN DROZE
(248) 948 4191
jdroze@signatureassociates.com

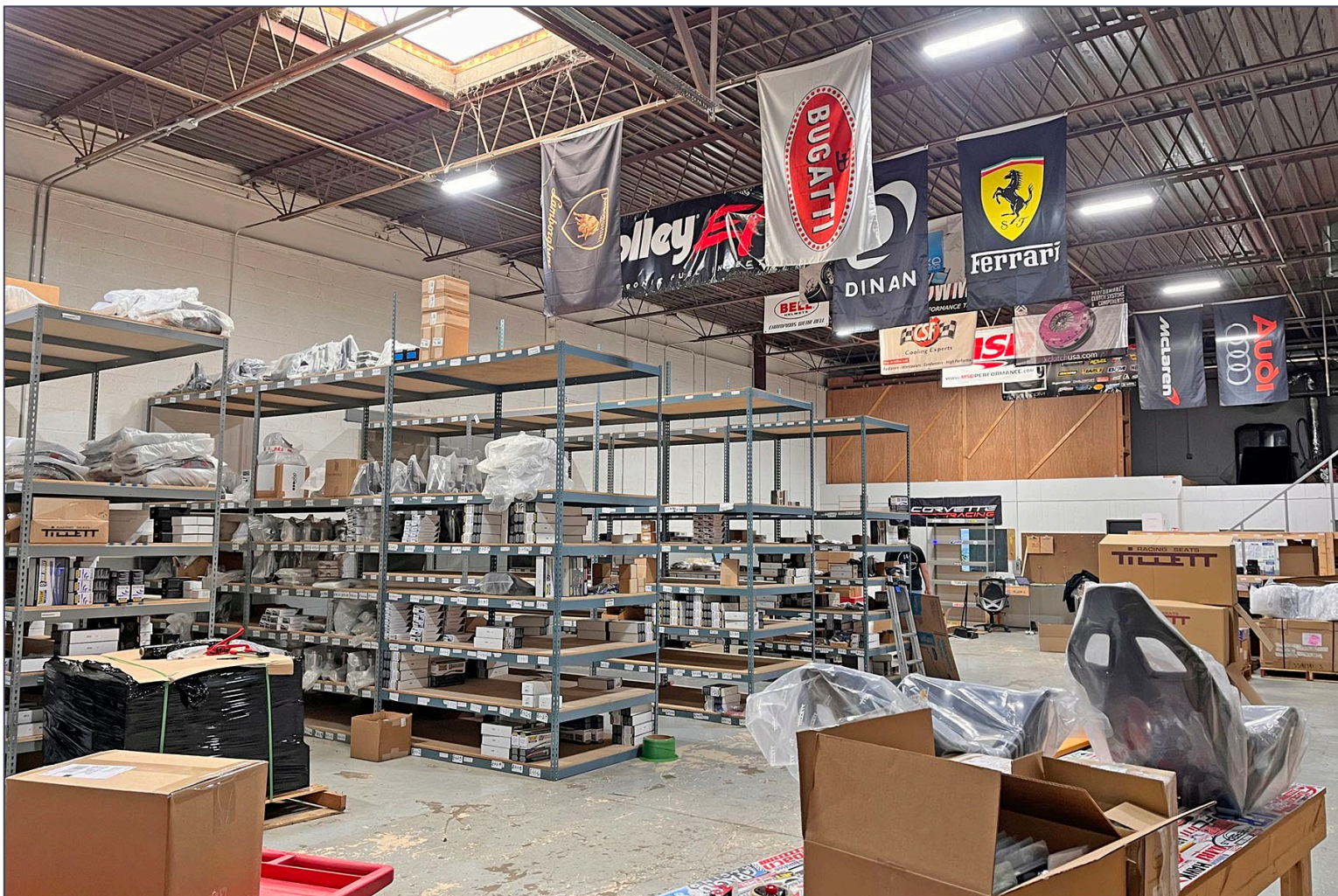
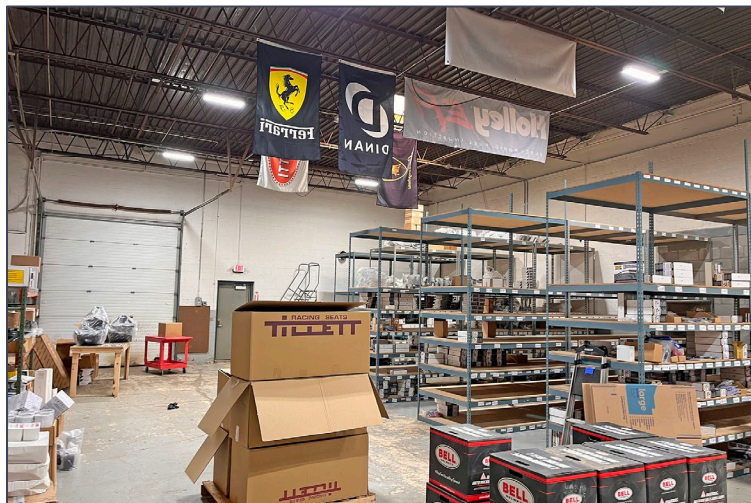
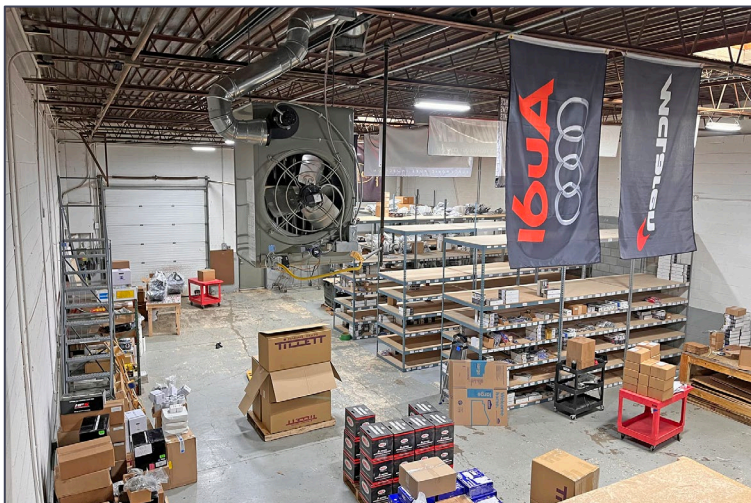
SIGNATURE ASSOCIATES
One Towne Square, Suite 1200
Southfield, MI 48076
www.signatureassociates.com

1307 & 1407 Allen Drive - Troy, Michigan

Industrial For Lease

3,200 – 4,000
Square Feet
AVAILABLE

Interior Photos – Unit 1407 G



For more information, please contact:

KRIS PAWLOWSKI
(248) 359 3801
kpawlowski@signatureassociates.com

JOHN DROZE
(248) 948 4191
jdroze@signatureassociates.com

SIGNATURE ASSOCIATES
One Towne Square, Suite 1200
Southfield, MI 48076
www.signatureassociates.com

1307 & 1407 Allen Drive - Troy, Michigan

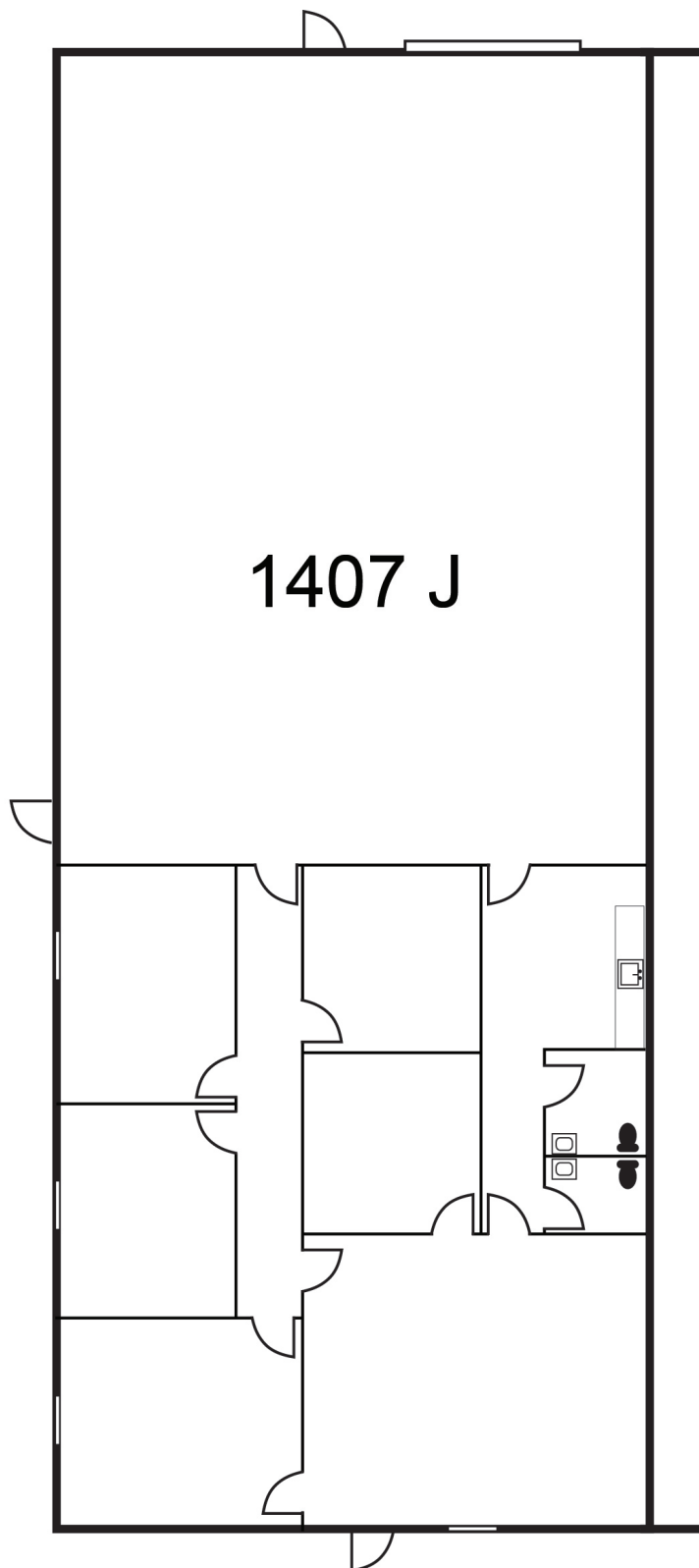
Industrial For Lease

3,200 – 4,000
Square Feet
AVAILABLE

Proposed Floor Plan

AVAILABILITY

UNIT	TOTAL SF	OFFICE SF	RATE
1407 J	4,000	1,600	\$11.24 Gross



For more information, please contact:

KRIS PAWLOWSKI

(248) 359 3801

kpawlowski@signatureassociates.com

JOHN DROZE

(248) 948 4191

jdroze@signatureassociates.com

SIGNATURE ASSOCIATES

One Towne Square, Suite 1200

Southfield, MI 48076

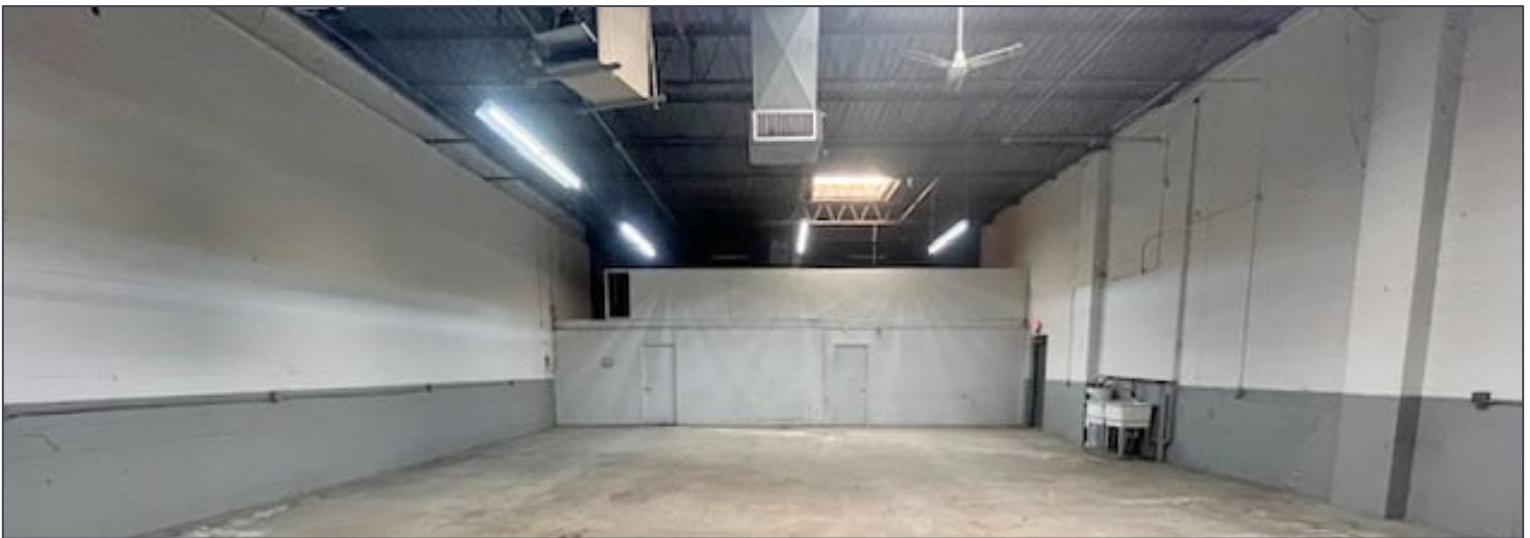
www.signatureassociates.com

1307 & 1407 Allen Drive - Troy, Michigan

Industrial For Lease

3,200 – 4,000
Square Feet
AVAILABLE

Interior Photos – Unit 1407 J



For more information, please contact:

KRIS PAWLOWSKI
(248) 359 3801
kpawlowski@signatureassociates.com

JOHN DROZE
(248) 948 4191
jdroze@signatureassociates.com

SIGNATURE ASSOCIATES
One Towne Square, Suite 1200
Southfield, MI 48076
www.signatureassociates.com