

FOR SALE

3024 PACIFIC AVE., STOCKTON, CA

FOR SALE: \$250,000.00 | ±0.14 ACRES LAND | ZONED: CN (City of Stockton)



FOR MORE INFORMATION CONTACT:

PARTNERS
COMMERCIAL

Lorie Liddicoat
209.915.9913
Lic. 01952818
Lorie@PartnersCommercialRE.com

Suzanne Grande
209.483.8999
Lic. 01080467
Suzanne@PartnersREinc.com

FOR SALE

3024 PACIFIC AVE., STOCKTON, CA

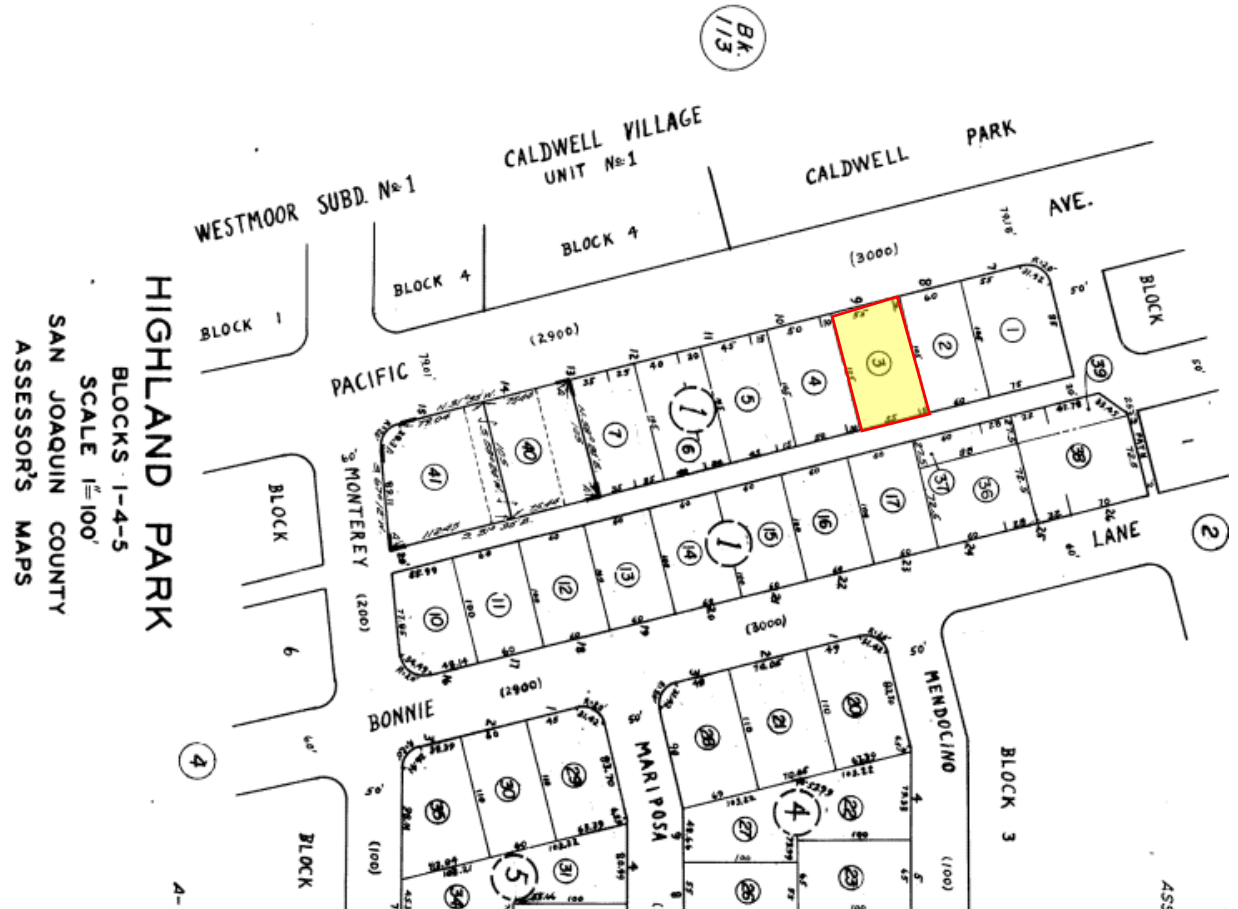
FOR SALE: \$250,000.00 | ±0.14 ACRES LAND | ZONED: CN (City of Stockton)

3024 PACIFIC AVE.

- APN: 125-030-020
- ±0.14 AC (±6,300 SF)
- Approved Site Plans for ±2,400 SF Commercial Office Included
- Zoned: CN (Commercial Neighborhood)

Property is located just blocks away from the University of the Pacific Campus as well as the Historical Miracle Mile.

All information found in this marketing package have been gathered from resources believed to be reliable. Brokers and Agents do not warrant, guarantee or represent the accuracy of the Information and recommend that all information be verified prior to a transaction.



FOR MORE INFORMATION CONTACT:

PARTNERS
COMMERCIAL

Lorie Liddicoat
209.915.9913
Lic. 01952818
Lorie@PartnersCommercialRE.com

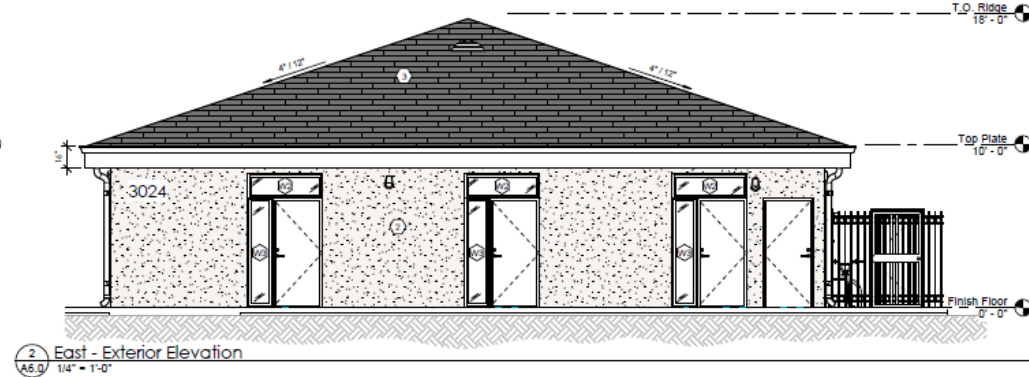
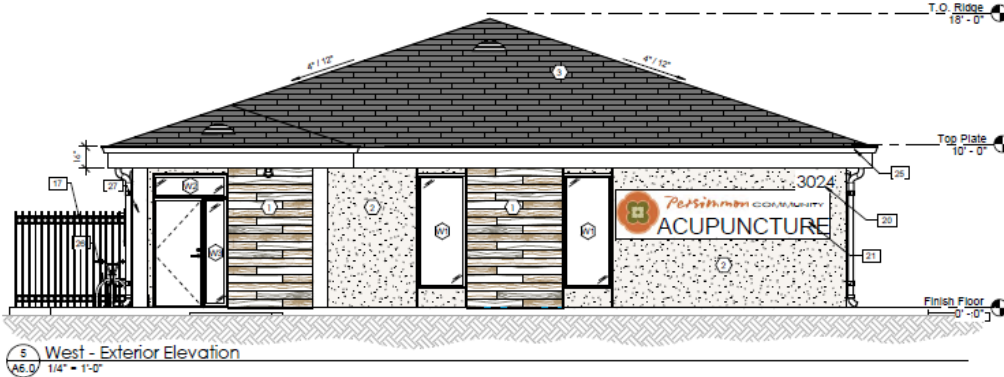
Suzanne Grande
209.483.8999
Lic. 01080467
Suzanne@PartnersREinc.com

FOR SALE

3024 PACIFIC AVE., STOCKTON, CA

FOR SALE: \$250,000.00 | ±0.14 ACRES LAND | ZONED: CN (City of Stockton)

*EXTERIOR ELEVATION



FOR MORE INFORMATION CONTACT:

PARTNERS
COMMERCIAL

Lorie Liddicoat
209.915.9913
Lic. 01952818
Lorie@PartnersCommercialRE.com

Suzanne Grande
209.483.8999
Lic. 01080467
Suzanne@PartnersREinc.com

FOR SALE

3024 PACIFIC AVE., STOCKTON, CA

FOR SALE: \$250,000.00 | ±0.14 ACRES LAND | ZONED: CN (City of Stockton)

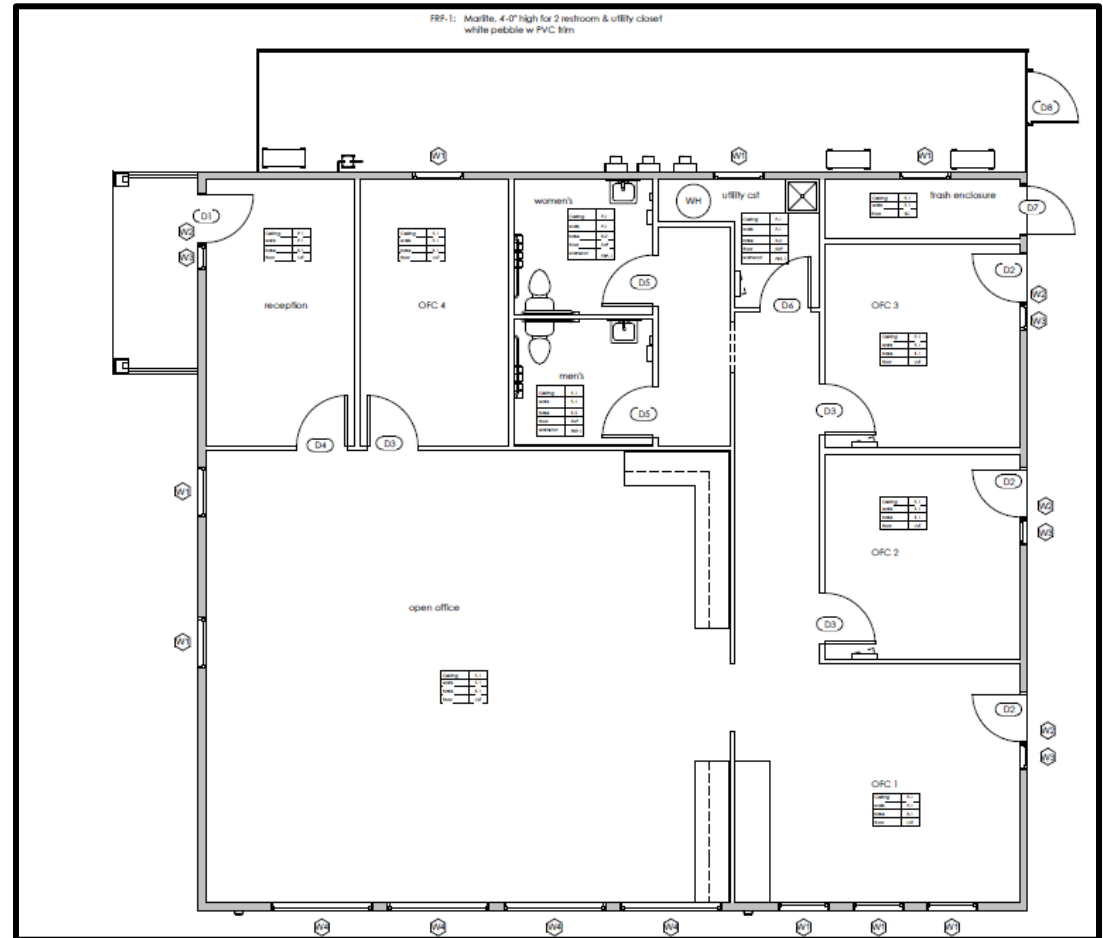
APPROVED SITE PLANS FEATURE:

- ±2,400 SF Commercial Office
- Reception Area
- Large Open Bull-Pen / Treatment Room
- Four (4) Private Offices – Three (3) w/ Private Entry
- Two Restrooms

Approved Site Plans included in the sale. Site plans have already been approved by the City of Stockton and expire in November of 2024. Extensions can be made by contacting the City of Stockton.

All information found in this marketing package have been gathered from resources believed to be reliable. Brokers and Agents do not warrant, guarantee or represent the accuracy of the Information and recommend that all information be verified prior to a transaction.

**Site Plan*



FOR MORE INFORMATION CONTACT:

PARTNERS
COMMERCIAL

Lorie Liddicoat
209.915.9913
Lic. 01952818
Lorie@PartnersCommercialRE.com

Suzanne Grande
209.483.8999
Lic. 01080467
Suzanne@PartnersREinc.com

FOR SALE

3024 PACIFIC AVE., STOCKTON, CA

FOR SALE: \$250,000.00 | ±0.14 ACRES LAND | ZONED: CN (City of Stockton)



FOR MORE INFORMATION CONTACT:



Lorie Liddicoat
209.915.9913
Lic. 01952818
Lorie@PartnersCommercialRE.com

Suzanne Grande
209.483.8999
Lic. 01080467
Suzanne@PartnersREinc.com