

950 - A N. CAHUENGA BOULEVARD

LOS ANGELES, CA 90038

FOR LEASE



CREATIVE OFFICE/WAREHOUSE/RETAIL

TOBIN M. MCANDREWS
SENIOR VICE PRESIDENT
MCANDREWS@WESTMAC.COM
310.966.4386
DRE #01416801

WESTMAC COMMERCIAL BROKERAGE COMPANY
1515 S Sepulveda Boulevard, Los Angeles, CA 90025
310.478.7700 | www.westmac.com
Company DRE #01096973

WESTMAC
Commercial Brokerage Company

950 - A N. Cahuenga Information



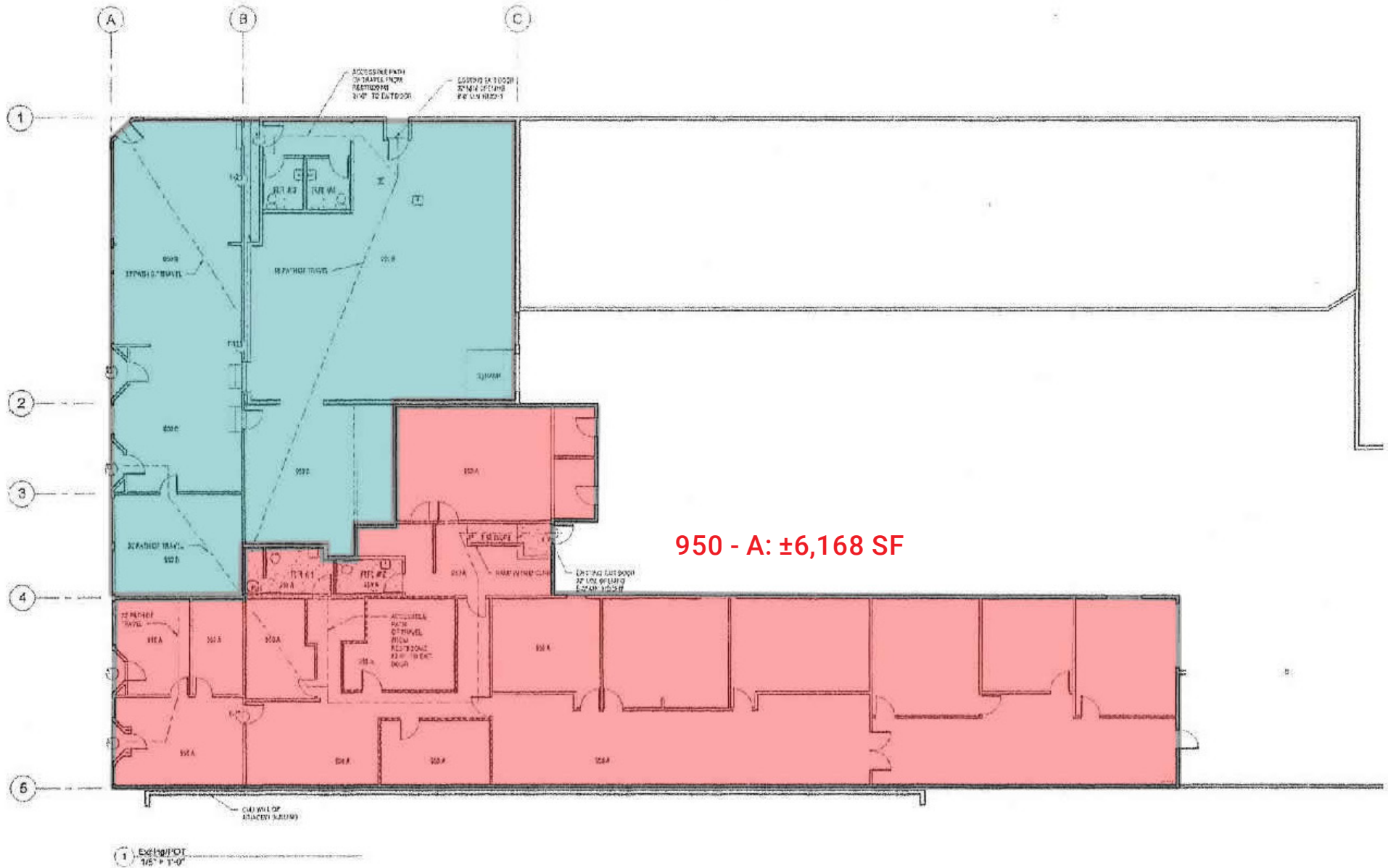
Location	950 - A N. Cahuenga Boulevard Los Angeles, CA 90038	Rental Rate	\$1.75 per square foot, per month, net net net (Triple net charges are \pm \$0.30/SF/Mo.)
Available Space	Approximately 6,168 total rentable square feet	Parking	Designated parking in rear parking lot plus street parking available
Lease Term	Three [3] to ten [10] years	Occupancy	Immediately
Property Types	Industrial-MRI/ Warehouse Office/Creative/Retail	Zoning	MR1 - 1 - SN

Building Features

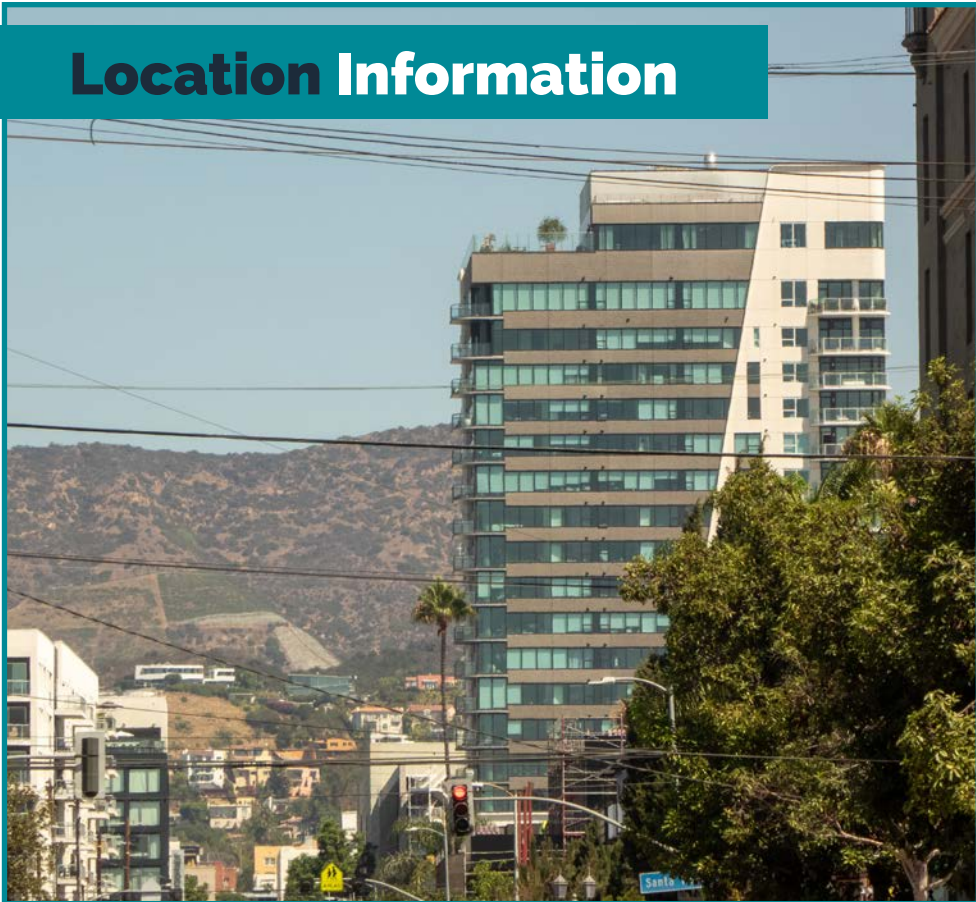


- » Recently Remodeled
- » High ceilings
- » Creative adaptive reuse warehouse
- » Separate street entrance
- » Loading dock
- » 10 x 10 ground level doors
- » Multiple private offices
- » Open area
- » Available signage

Floor Plan



Location Information



- » Centrally Located near 101 Freeway, and major intersections such as Santa Monica Boulevard, Melrose Avenue, and Sunset Boulevard.
- » Located in the heart of The Hollywood Media District, approximately 10 square blocks of notable film studios and media production companies including Netflix and Paramount.
- » Prime Location in the heart of Hollywood central to the surrounding cities of West Hollywood, Hancock Park, and Beverly Hills.
- » Within walking distance to Hollywood/ Cahuenga Corridor restaurants and amenities such as The Hollywood Comedy, Wilshire Country Club, Astro Burger, Castle BBQ, Oui, Osteria Mozza, Rick Owens, Pinks, Great White, Marino, Rao's, Salt's Cure, and more.

Aerial Map

Cahuenga Blvd

Romaine St

Lillian Way



Roadway Map



Larchmont



Santa Monica Blvd

Sunset Blvd

950
N. Cahuenga
Blvd

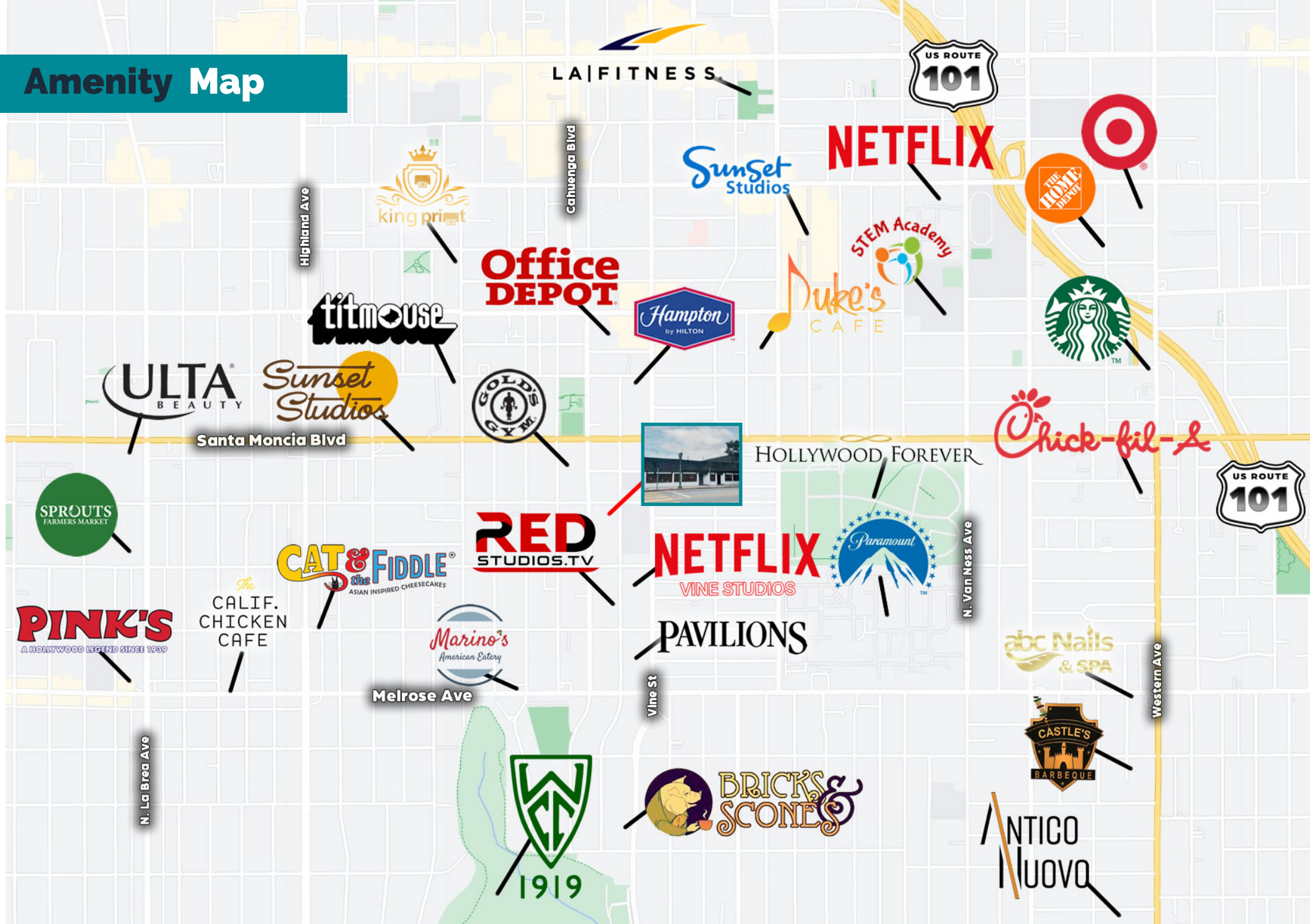
Melrose Ave

Hollywood

Cahuenga Blvd

Wilshire

Amenity Map





Exclusively Listed by:



TOBIN M. MCANDREWS
Senior Vice President
mcandrews@westmac.com
310.966.4386
DRE#: 01416801

WESTMAC COMMERCIAL BROKERAGE COMPANY

1515 S Sepulveda Boulevard, Los Angeles, CA 90025 | 310.478.7700 | www.westmac.com | Company DRE #01096973

WESTMAC
Commercial Brokerage Company

We obtained the information contained in this memorandum from sources we believe to be reliable. However, we have not verified its accuracy and make no guarantee, warranty or representation about it. It is submitted subject to the possibility of errors, omissions, change of price, rental or other conditions, prior sale, lease or financing or withdrawal without notice. We include projections, opinions, assumptions or estimates for example only, and they may not represent current or future performance of the property. You and your tax and legal advisors should conduct your own investigation of the property and transaction. | This statement with the information it contains is given with the understanding that all negotiations relating to the purchase, renting, or leasing of the property described above shall be conducted through this office. The above information while not guaranteed has been secured from sources we believe to be reliable.