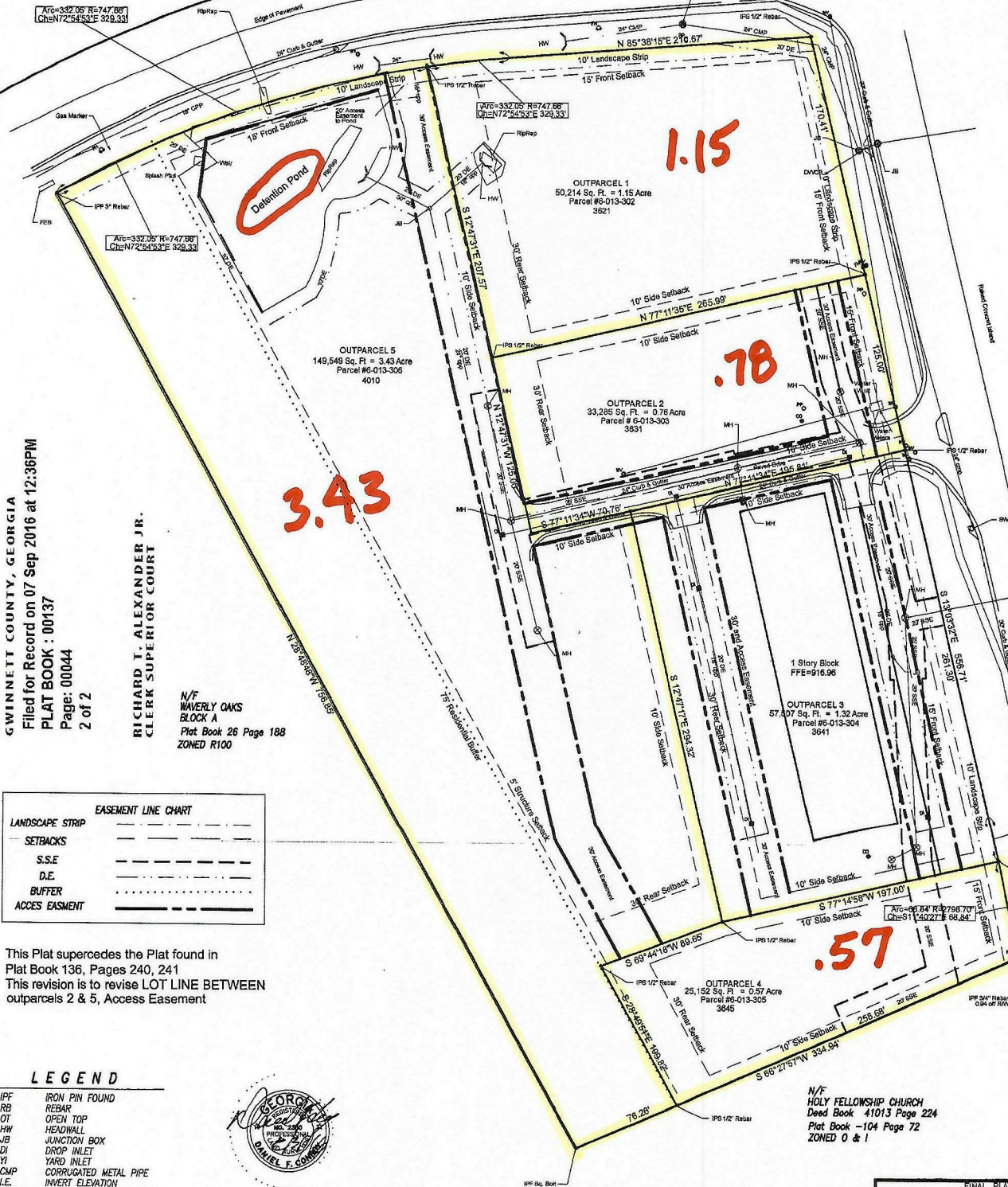


CAMPBELL ROAD 80' R/W

GRID NORTH
GEORGIA WEST ZONE

CENTERVILLE HWY (S.R.124) R/W VARIES



WINNETT COUNTY, GEORGIA
Filed for Record on 07 Sep 2016 at 12:36PM
PLAT BOOK : 00137
Page: 00044
2 of 2

RICHARD T. ALEXANDER JR.
CLERK SUPERIOR COURT
N/F WAVERLY OAKS
BLOCK A
Plat Book 26 Page 188
ZONED R100

EASEMENT LINE CHART	
LANDSCAPE STRIP	---
SETBACKS	---
S.S.E	---
D.E	---
BUFFER	---
ACCESS EASEMENT	---

This Plat supercedes the Plat found in
Plat Book 136, Pages 240, 241
This revision is to revise LOT LINE BETWEEN
outparcels 2 & 5, Access Easement

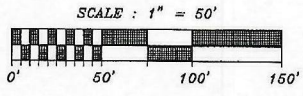
LEGEND

IPF	IRON PIN FOUND
RB	REBAR
OT	OPEN TOP
HW	HEADWALL
JB	JUNCTION BOX
DI	DROP INLET
YI	YARD INLET
CMP	CORRUGATED METAL PIPE
LE	INVERT ELEVATION
DWCB	DOUBLE WING CATCH BASIN
SSMH	SANITARY SEWER MANHOLE
D.E.	DRAINAGE EASEMENT
S.S.E.	SANITARY SEWER EASEMENT
FH	FIRE HYDRANT
WV	WATER VALVE
PP	POWER POLE
B.L.	BUILDING SETBACK LINE



This survey was prepared in conformity with the TECHNICAL STANDARDS for PROFESSIONAL SURVEYS in Georgia as set forth in Chapter 180-7 of the Rules of the Georgia Board of Registration for Professional Engineers and Land Surveyors and set forth in the Georgia Plat Act, O.C.G.A. 18-8-97.

NOT VALID WITHOUT ORIGINAL SIGNATURE AND DATE ON SEAL. THIS DRAWING AND ANY COPIES THEREOF ARE THE PROPERTY OF CONROY & ASSOCIATES, P.C. AND SHALL NOT BE REPRODUCED OR COPIED, IN WHOLE OR IN PART, OR OTHERWISE USED WITHOUT WRITTEN PERMISSION OF THE OWNER. NO INDIRECT, EXPRESS OR IMPLIED, IS EXTENDED TO ANY UNLAWFUL THIRD PARTY.



N/F HOLY FELLOWSHIP CHURCH
Deed Book 41013 Page 224
Plat Book -104 Page 72
ZONED O & I

FINAL PLAT FOR:	
CENTERVILLE POINTE	
SURVEYING SERVICES BY:	
conroy & associates, P.C.	
LAND LOT: 13	SURVEYED: 4-18/19-16
DISTRICT: 6th	DRAWN: 7-14-16 BY: DC
COUNTY: GWINNETT	SCALE: 1"=50'
778 McGinnis Ferry Rd Suite 106 Suwanee, GA 30024 770.831.3301 conroyassoc@gmail.com	
3643 Centerville Hwy SHEET 2 OF 2	
AQ056	