

6579 S Broadway
Littleton, CO 80121

FOR LEASE



Manuel Martin
970-698-0188
manuel@stepcre.com

James Bealer
936-444-5277
james@stepcre.com





Property Notes:

This 2,376 square foot retail space at 6579 S Broadway offers excellent street presence on South Broadway, a high-visibility artery connecting Littleton to the greater Denver metro area with strong daily traffic counts. The space is well-suited for a wide variety of retail or service-oriented uses, offering a flexible floor plan ready to accommodate your buildout vision.

Asking Rent:	\$15.00 NN
Building Size:	2,376 SF
OPEX:	\$11.50/SF/Yr
Available Space:	2,376 SF
Lease Term:	Negotiable



Property Highlights

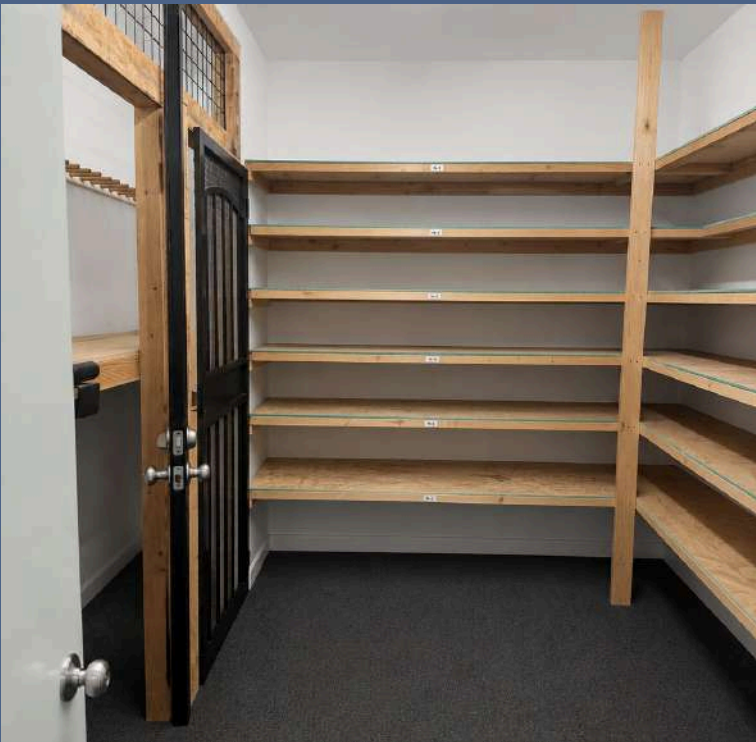
- 2,376 SF of gross leasable retail space
- Prime S Broadway frontage with high visibility and strong drive-by traffic
- Convenient private parking on-site
- Surrounded by established retailers, restaurants, and service businesses
- Easy access to US-285 and I-25, serving the broader South Denver metro
- Located in the heart of Littleton's retail corridor, minutes from downtown Littleton and Littleton Adventist Hospital
- Strong surrounding demographics with an affluent, established residential base

Location Description

Located along South Broadway in Littleton, Colorado, 6579 S Broadway sits within one of the Denver metro's most established retail corridors, generating approximately 42,000 vehicles per day and offering outstanding visibility and direct access for businesses of all types. The surrounding trade area is exceptionally dense, with nearly 300,000 residents within a five-mile radius, providing a deep and diverse consumer base.







Site Map





Take the Next Step

Contact US



Manuel Martin

970-698-0188

manuel@stepcre.com



James Bealer

936-444-5277

james@stepcre.com