

# 384 Bel Marin Keys Boulevard

NOVATO, CA | OFFICE SPACE FOR LEASE

5% Fee to Tenant's Brokers



**384 BEL MARIN KEYS BLVD.**

CHANGE HEALTHCARE  
J.R. DAVIS & ASSOCIATES  
EUGENE BURGER MANAGEMENT CORP.  
FOTH  
SUNSTALL INC. | c2e LLC | AQUASOLI LLC  
BCS\*A COMPUTERS  
L & L BUSINESS SERVICES  
IMSI DESIGN

Brian Foster  
Executive Director  
+1 415 451 2437  
brian.foster@cushwake.com  
LIC #01393059

Steven Leonard  
Managing Director  
+1 415 722 1080  
steven.leonard@cushwake.com  
LIC #00909604

Drew Soltis  
Associate  
+1 415 451 2415  
drew.soltis@cushwake.com  
LIC #02163430





**1978**  
YEAR BUILT



**± 2,952 SF**  
AVAILABLE



**70 Spaces**  
PARKING



**On Site Amenities**  
ELEVATOR SERVED



**Solar**  
ON ROOF



**.91**  
ACRES

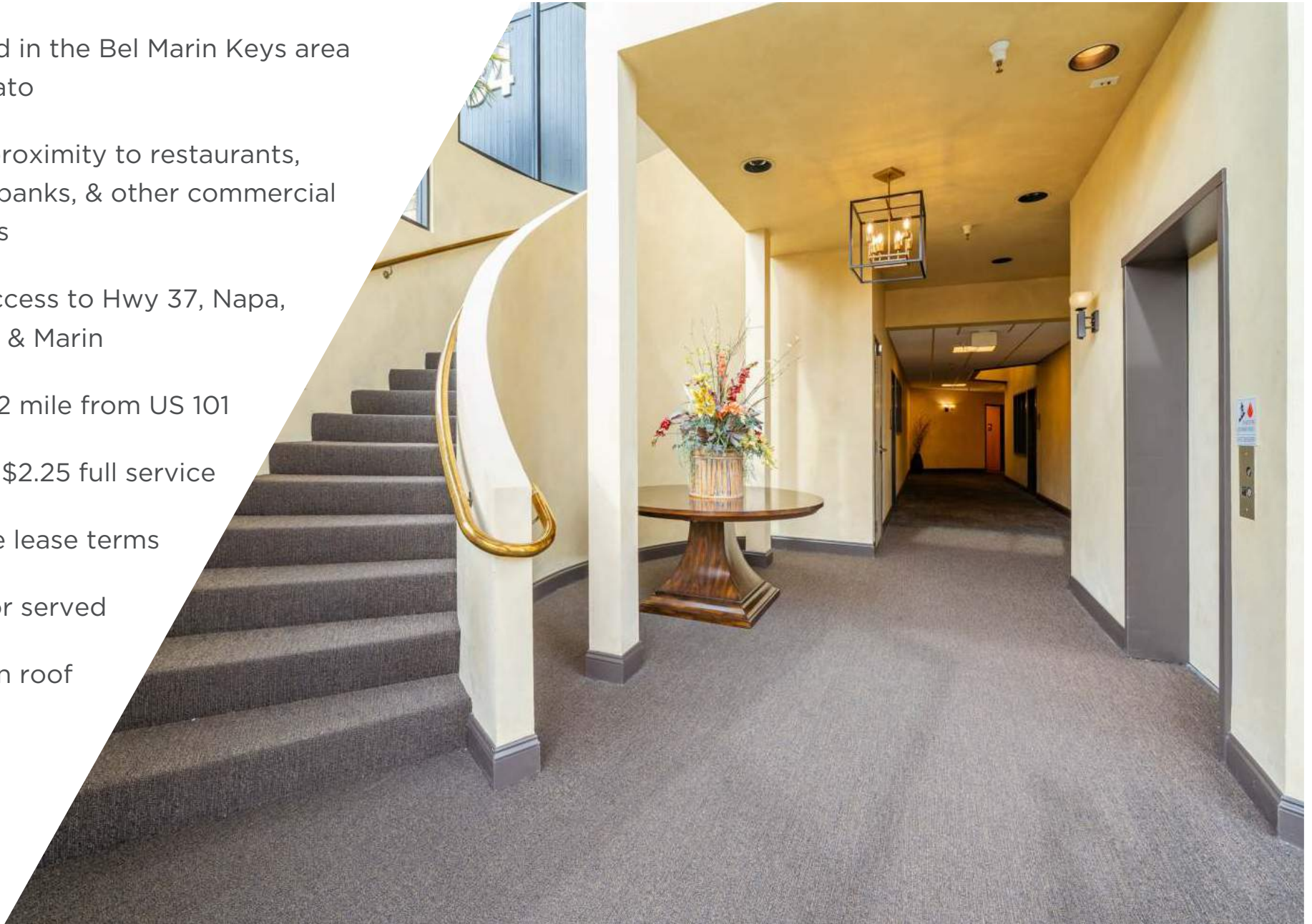


**NEARBY  
AMENITIES**





- Located in the Bel Marin Keys area of Novato
- Close proximity to restaurants, shops, banks, & other commercial services
- Easy access to Hwy 37, Napa, Solano, & Marin
- Only 1/2 mile from US 101
- Asking \$2.25 full service
- Flexible lease terms
- Elevator served
- Solar on roof





## SUITE 125:

- ±984 SF
- 2 private offices
- Open area



## SUITE 135:

- ±984 SF
- 2 private offices
- Open area
- Kitchenette



## SUITE 145:

- ±984 SF
- 2 offices
- Bullpen area



Suites 125, 135, and 145 can be combined for a total of  $\pm 2,952$







384 BEL MARIN KEYS



NOVATO HAMILTON SMART TRAIN STATION

- SMART Train
- US HWY 101
- BEL MARIN KEYS BLVD

- Dollar Tree
- Safeway
- Bank of Marin
- Adobe Creek Brewing
- Taqueria Real
- Michae's Sourdough
- Marin Humane
- Aurora Ristorante
- Kalin Cellars
- Biomarin Pharmaceutical
- Toast
- Peet's Coffee
- Super Duper
- Pet Food Express
- McDonald's
- Courtyard by Marriott
- Wells Fargo
- U-Haul





CUSHMAN &  
WAKEFIELD

# 384 Bel Marin Keys Boulevard

NOVATO, CA | OFFICE SPACE FOR LEASE

5% Fee to Tenant's Brokers

384

Brian Foster  
Executive Director  
+1 415 451 2437  
brian.foster@cushwake.com  
LIC #01393059

Steven Leonard  
Managing Director  
+1 415 722 1080  
steven.leonard@cushwake.com  
LIC #00909604

Drew Soltis  
Associate  
+1 415 451 2415  
drew.soltis@cushwake.com  
LIC #02163430