

# FOR LEASE

1635 & 1637 Burnham St, Columbia, SC 29169

Two ±2,000 SF Flex Suites



**Jessica Hinson**

803.269.2373

[jjhinson@reedypg.com](mailto:jjhinson@reedypg.com)



**Bryan Kingrey**

803.466.9621

[bkingrey@reedypg.com](mailto:bkingrey@reedypg.com)



# Executive Summary

1635 & 1637 Burnham St, Columbia, SC 29169

## Property Highlights:

- ±1,000 SF Office Area
- 2 private offices, bathroom, and kitchen
- ±1,000 SF Warehouse
- ±14' ceilings
- (1) 10x10' roll-up drive-in door

## Location Highlights:

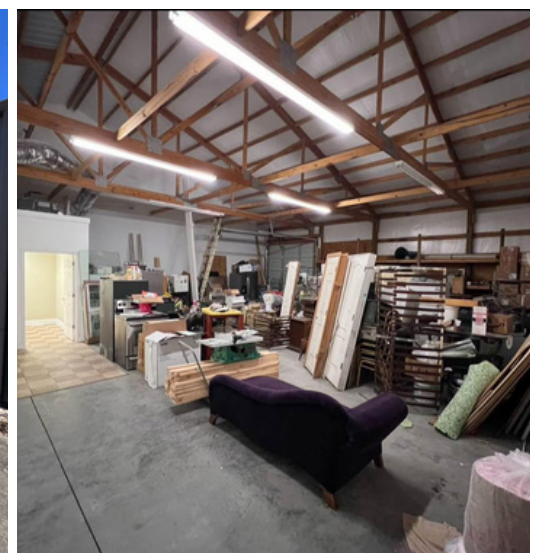
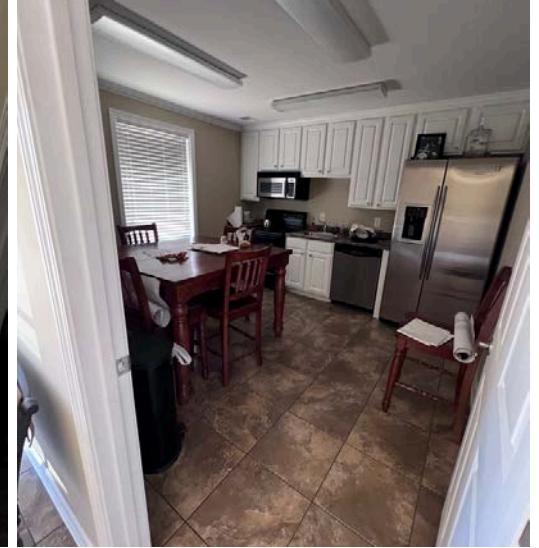
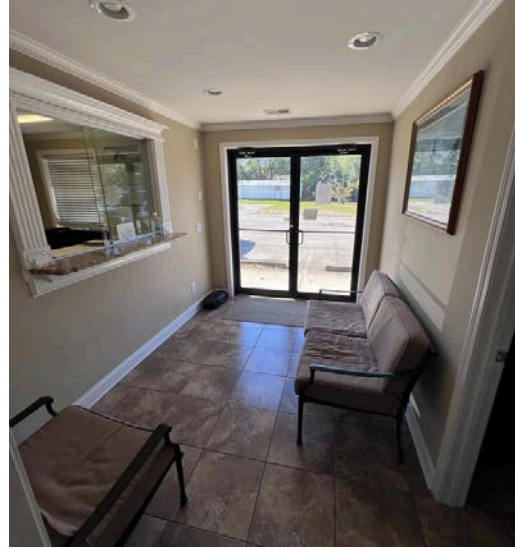
- ±2 miles I-26
- ±2 miles Downtown
- VPD: ±13,800

## Offering Summary

**1635 Suite:** ±2,000 SF | \$2,400/month

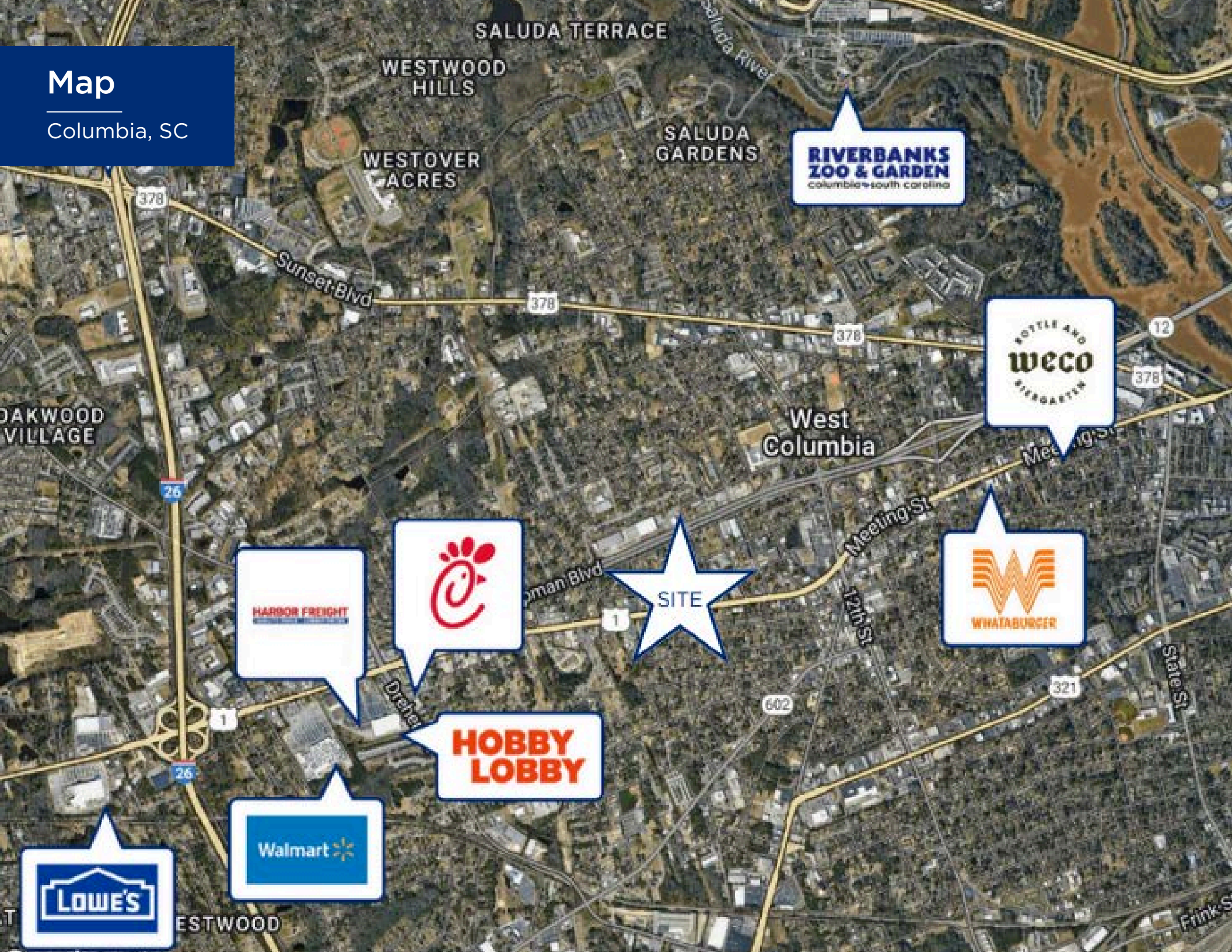
**1637 Suite:** ±2,000 SF | \$2,400/month

*Acreage, square footage, taxes, utilities and lot dimensions to be verified by Tenant and/or Tenant's Agent.*



# Map

Columbia, SC



SALUDA TERRACE

WESTWOOD HILLS

WESTOVER ACRES

SALUDA GARDENS

**RIVERBANKS ZOO & GARDEN**  
columbia-south carolina

378

Sunset Blvd

378

378

12

378

OAKWOOD VILLAGE

West Columbia

BOTTLE AND  
**weco**  
BIBERGARTEN

26

**HARBOR FREIGHT**

1st St

1

SITE

Meeting St

12th St

602

321

26

**LOWE'S**

**Walmart**

WESTWOOD

State St

Frank St



# Contact Information

Reedy Property Group

## WE KNOW THE MARKET BECAUSE WE'RE INVESTED HERE TOO

At Reedy Commercial, we care about the why behind a commercial property as much as the what.

That's because we believe resilient communities, and portfolios that weather any market, start with people who have a vision beyond a quick profit.

Our network is as valuable as our net worth because this is our market, too.

We're invested in every asset class of commercial real estate right where our roots run deepest. That's how we uncover powerful investments in unexpected locations that yield incredible returns. It's why our clients trust us over the latest trends. And, it's what ignites our deepest passion - turning real estate investments into legacies.



**Jessica Hinson**

803.269.2373

[jhinson@reedypg.com](mailto:jhinson@reedypg.com)



**Bryan Kingrey**

803.466.9621

[bkingrey@reedypg.com](mailto:bkingrey@reedypg.com)

