

Salt Lake City Office

1890 South 3850 West
Salt Lake City, UT 84104



OFFICE | FOR LEASE

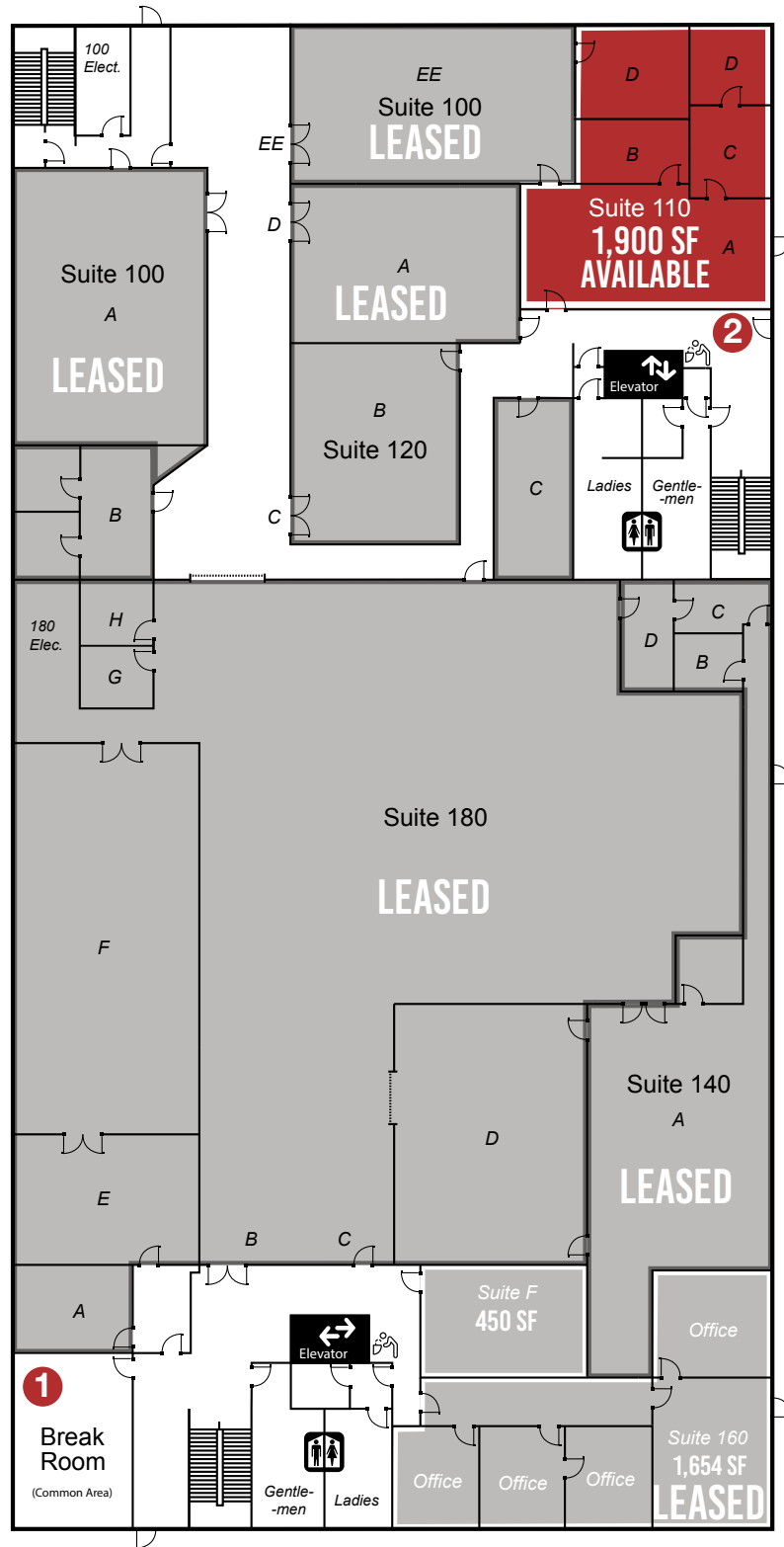
PROPERTY INFORMATION

- > **Suite 110** (main floor) - **Approx. 1,900 SF**
- > \$15.50 PSF, Full service
- > Can be used as office or small manufacturing area

- > **Suite 285** (second floor) - **Approx. 7,478 SF**
- > \$17.50 PSF, Full service
- > Large open room - meeting area

- > Elevator
- > Nice building/clean environment
- > Well sprinkled
- > Located in preferred industrial area
- > Common area break room and restrooms
- > Ample parking
- > Minutes from Salt Lake International Airport
- > Close Location To Bangerter Highway
- > 10 minutes to Downtown SLC
- > Easy access to I-80 and I-215

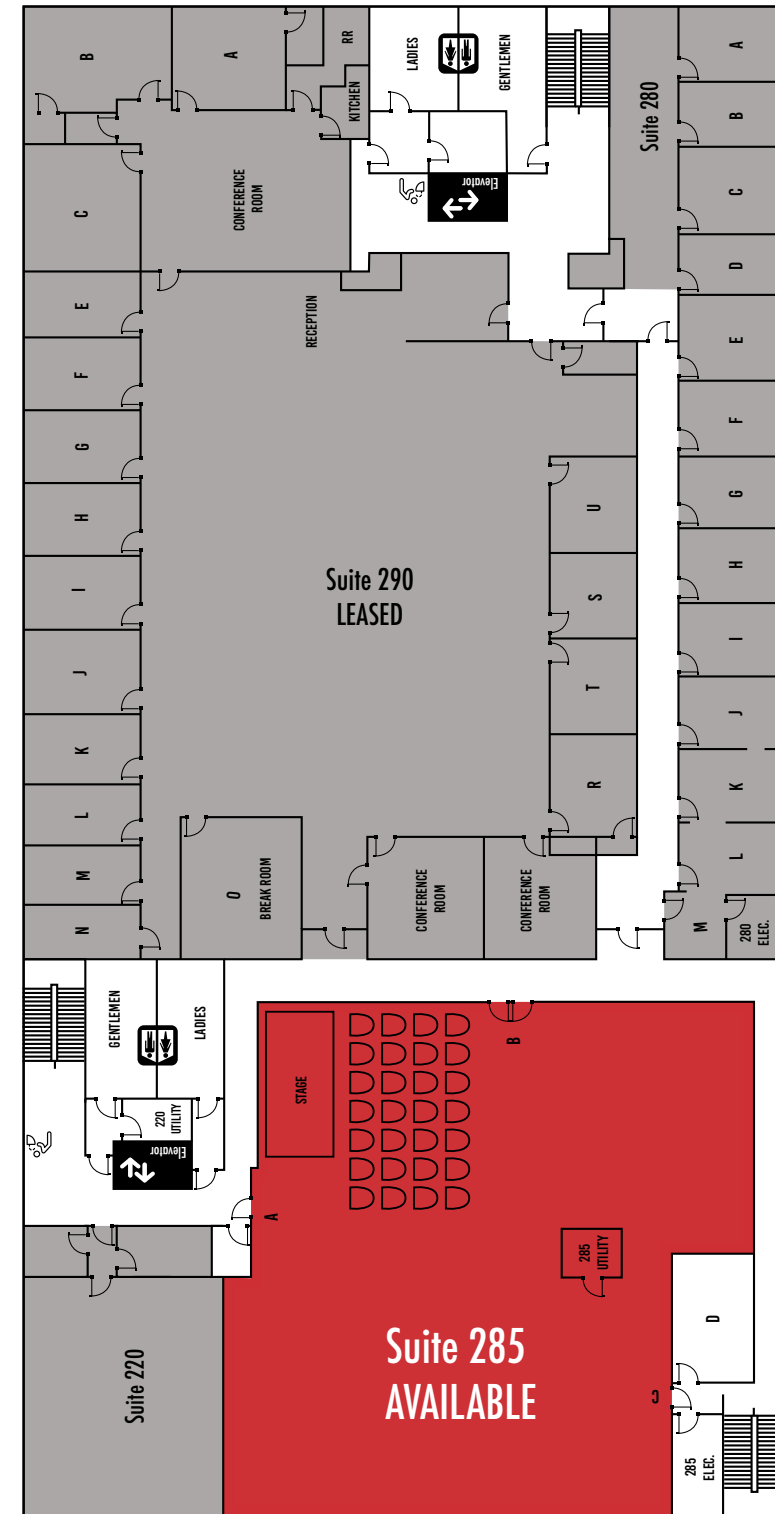
MAIN FLOOR



Main level - Suite 110: 1,900 SF



SECOND FLOOR



Second level - Suite 285: 7,478 SF

