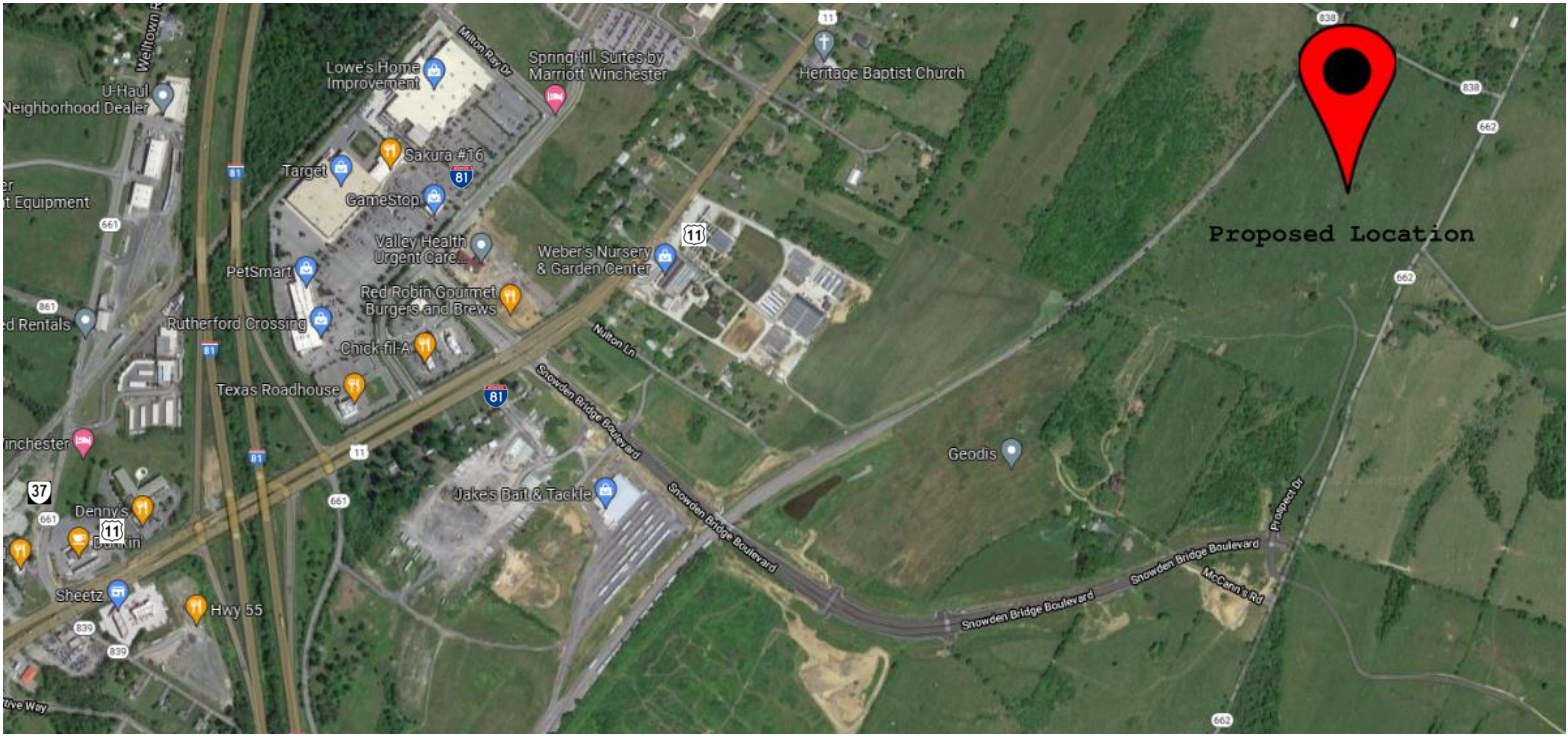


327,600SF FACILITY

- 420 X 780' OUTSIDE DIMENSIONS
- Concrete Wall CONSTRUCTION
- HIGH BAY LED LIGHTING
- ESFR SPRINKLER
- 36' CLEAR CEILING HEIGHT
- 50'+ COLUMN SPACING
- FIXED WINDOWS FOR NATURAL LIGHT
- UP TO 55 Dock Positions
- 7"+ THICK CONCRETE SLAB ON GRADE





- EASY ACCESS TO I-81, RT. 11, & RT. 37
- CLOSE TO RUTHERFORD CROSSING
- WITHIN 20 MILES OF VIRGINIA INLAND PORT

FORT COLLIER STONEWALL OTHERS NEARBY



Shockey Realty Company

Wade Johnson - Property Manager at Berkeley Business Park
 wjohnson@shockeycompanies.com (540) 665-3281

www.shockeycompanies.com

Crystal Dreiling - Office Manager at Berkeley Business Park
 cdreiling@shockeycompanies.com (540) 665-3288